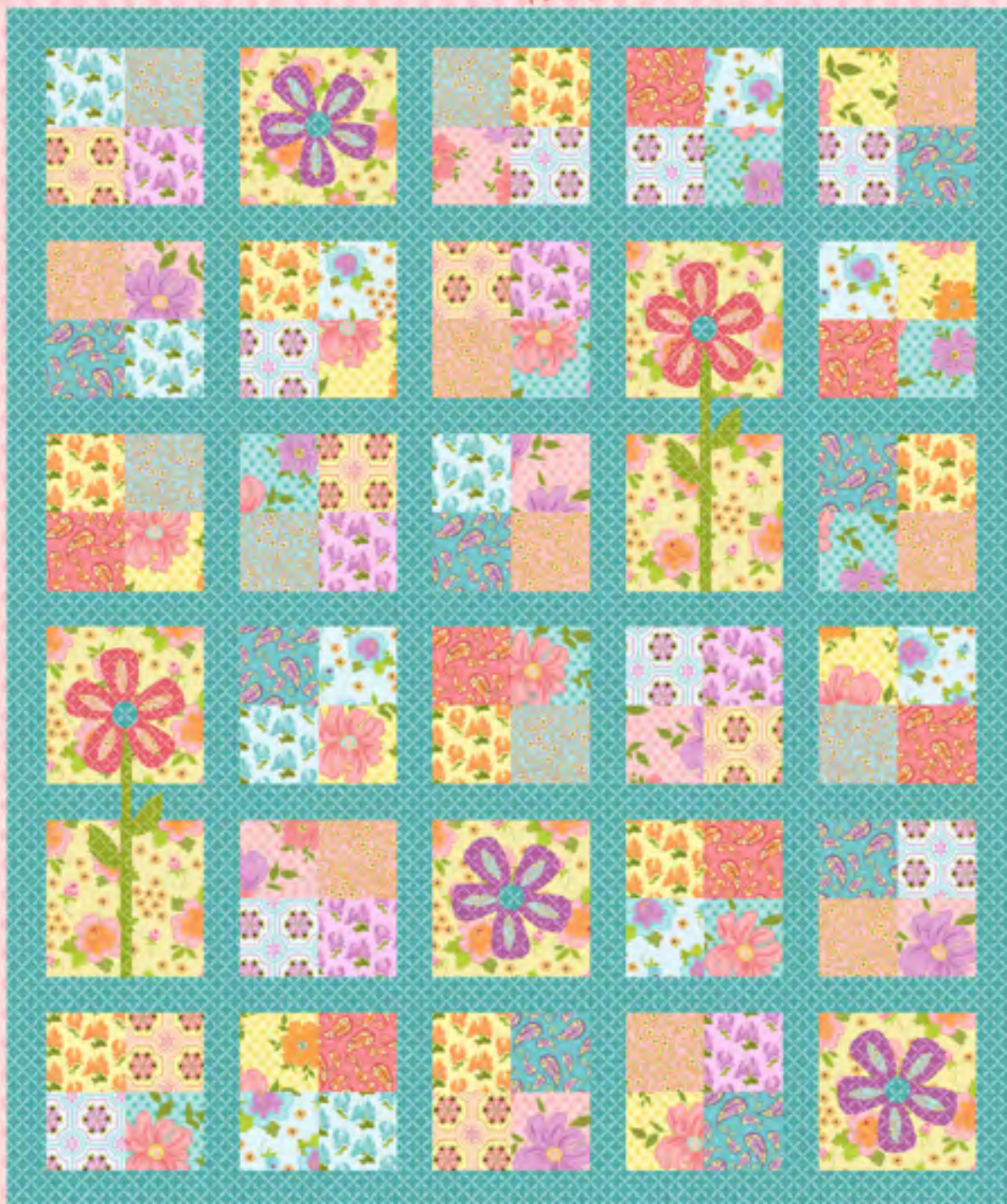


Sugar Blossom


by Amy Hamberlin of

kati cupcake
pattern co.



Finished Quilt Size: 57" x 68"

A Free Pattern From

 Henry Glass & Co., Inc

49 West 37th Street, New York, NY 10018

tel: 212-686-5194 fax: 212-532-3525

Toll Free: 800-294-9495

www.henryglassfabrics.com

facebook

Sugar Blossom

by Amy Hamberlin of

kati cupcake
pattern co.



9330-11



9330-22



9330-44



9331-11



9331-44



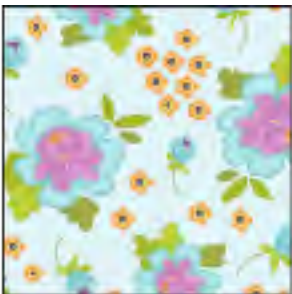
9332-11



9332-44



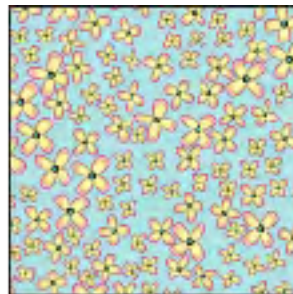
9332-55



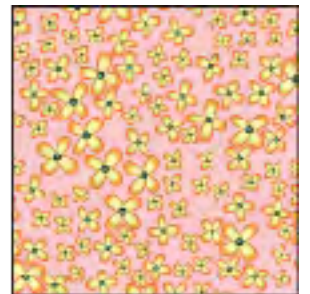
9333-11



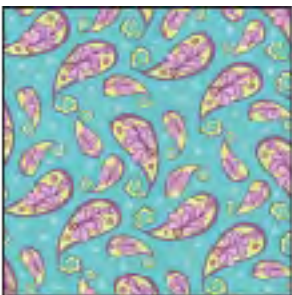
9333-44



9334-11



9334-22



9335-11



9335-22



9336-11



9336-22



9336-55



9336-66

Finished Quilt Size: 57" x 68"

Finished Block Size: 9" x 9"

Materials

2 yards Blue Tonal (9336-11)

(includes binding)

5/8 yard Yellow Floral (9333-44)

1/4 yard **EACH** of (16) different fabrics:

(9330-11), (9330-22), (9330-44), (9331-11),
(9331-44), (9332-11), (9332-44), (9332-55),
(9333-11), (9334-11), (9334-22), (9335-11),
(9335-22), (9336-22), (9336-55), (9336-66)

3 7/8 yards Blue Floral Dot (9330-11)

(for quilt backing)

1 yard of lightweight, double-sided, fusible webbing
template plastic

thread to match appliques

usual rotary cutting and sewing supplies

Cutting Instructions

Please note: all strips are cut across the width of the fabric from selvage edge to selvage edge.

From the blue tonal, cut:

- (27) 2 1/2" strips. Set aside (7) strips for the binding. Recut (7) strips into (25) 2 1/2" x 9 1/2" sashing pieces.

From the yellow floral, cut:

- (2) 9 1/2" strips. Recut into (7) 9 1/2" x 9 1/2" squares.

From EACH of the remaining (13) prints, cut:

- (1) 5" strip. Recut into (8) 5" x 5" squares.

Reserve remaining fabric, including scraps, for appliqué.

Sewing Instructions

All seams are sewn using 1/4" seam allowance with pieces held right sides together and raw edges even.

Arrange (4) 5" squares into (2) rows of (2) units each using a different fabric for each square. Use the quilt pictured on the cover as a guide to fabric placement or use any fabric combinations you find pleasing. Stitch the squares into rows and sew the rows together to make (1) four-patch block measuring 9 1/2" from raw edge to raw edge in both directions. Repeat to make a total of (23) four-patch blocks.



Quilt Assembly

1. Referring to the quilt pictured on the cover and the Quilt Assembly Diagram on page 2, arrange the four-patch blocks and 9 1/2" yellow floral squares into (6) rows with (5) units in each row.

- Working lengthwise, stitch the blocks and squares into columns, placing the two types of units as shown and alternating with the 2 1/2" x 9 1/2" blue tonal sashing pieces. Stitch the units into (5) vertical columns.
- Trim the selvages from the remaining (13) 2 1/2" blue tonal strip. Sew the strips together end to end to make a long 2 1/2" strip. From this long strip, cut (2) 68 1/2", (4) 64 1/2", and (2) 53 1/2" lengths.
- Stitch the columns of blocks to the 64 1/2" blue tonal sashing strips, alternating the two types of units. Sew the 53 1/2" blue tonal sashing strips to the top and bottom of the quilt top. Sew the 68 1/2" blue tonal sashing strips to the left and right sides of the quilt top.
- Complete the appliqué according to the instructions in the next section.
- Layer the completed quilt top with batting and backing and quilt as desired.
- Trim the finished quilt and bind using the remaining 2 1/2" blue tonal strips.

Appliqué

- Using template plastic and the paper patterns provided on page 2, make templates for the flower center, large petal, small petal, and leaf shapes. Please note that the templates are for raw-edged, fusible applique and do not include seam allowances. The large petal shape does include a margin at the base for tucking under the flower center.
- Leaving 1/2" margin between shapes, trace the following onto the paper side of the fusible webbing: (5) flower centers, (25) large petals, (25) small petals, and (2) leaves. Flip the leaf template upside down and trace (2) reverse leaves. Using a ruler, draw (2) 1/2" x 15" rectangles onto the fusible webbing. These rectangles are for the (2) stems. Cut out each traced shape 1/4" beyond the marked lines.
- Following the manufacturer's instructions, fuse the traced flower center shapes to the wrong side of the scraps of the blue tonal fabric. Fuse (15) of the large petals to the wrong side of the purple tonal fabric (9336-55). Fuse (10) of the large petals to the wrong side of the pink tonal fabric (9336-22). Fuse (15) inner petals to the scraps of the light blue (9334-11). Fuse (10) inner petals to the scraps of the light pink (9334-22). Fuse all leaves and the stems to the wrong side of the green tonal fabric (9336-66). Cut out each shape on the traced line.
- Using the quilt pictured on the cover and the Quilt Assembly Diagram on page 2 as a guide to placement, remove the paper backings from each shape and fuse to the quilt top.
- Overcast the raw edges of each appliqué shape using matching thread and the machine decorative stitch of your choice.

Quilt Assembly Diagram

