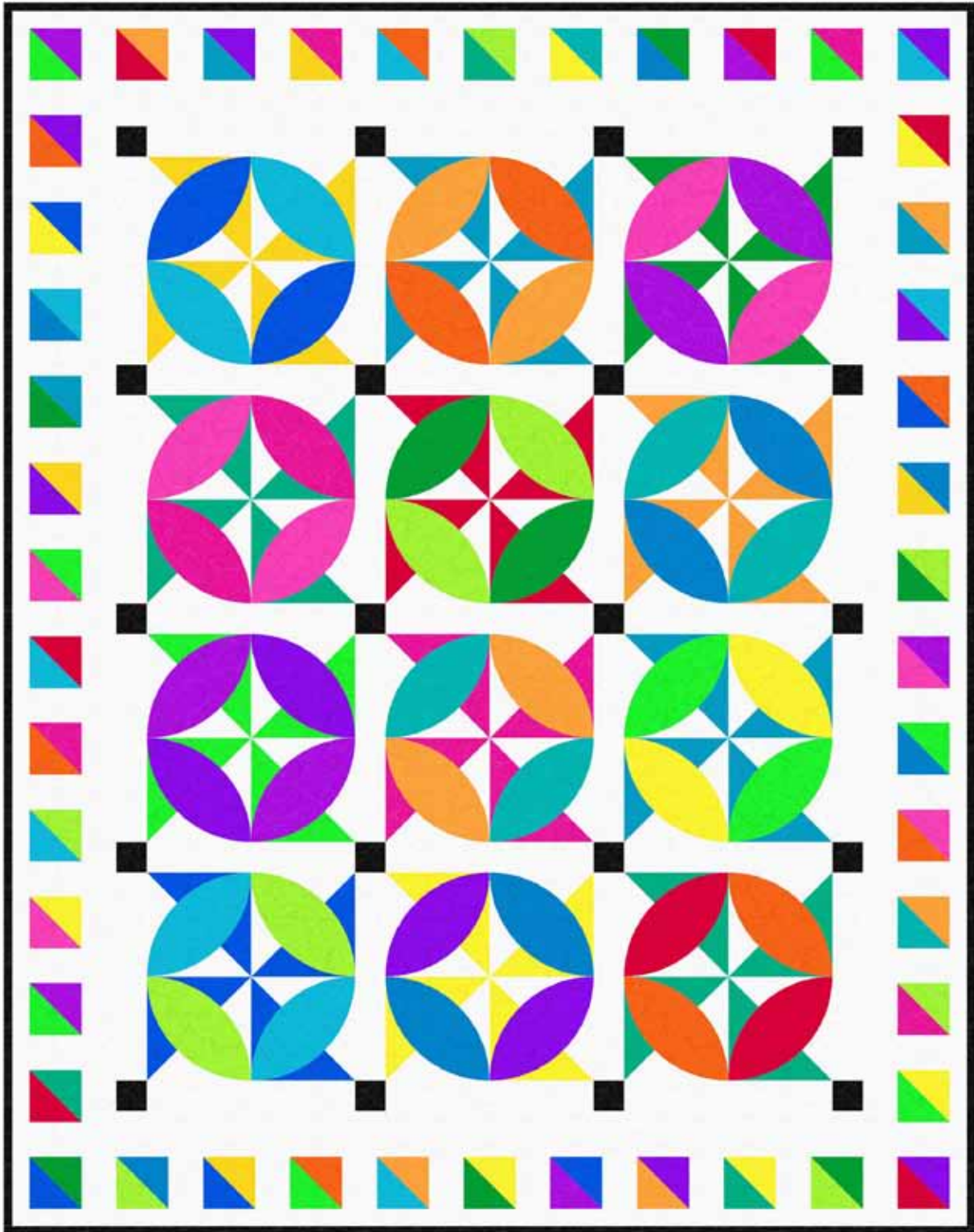


# Thru The Window

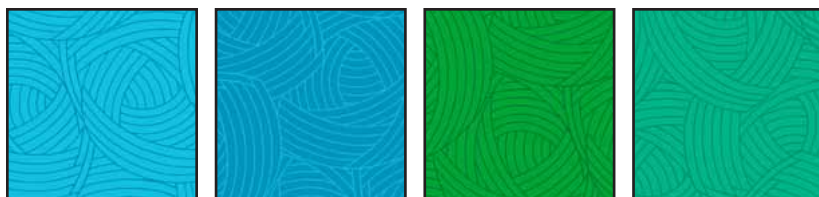
using Fat Quarters of Lola Textures



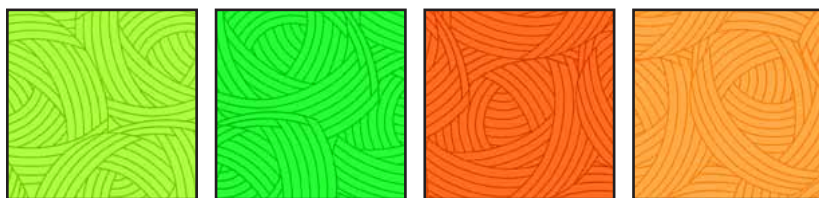
Designed By: Gina Gempesaw  
Finished Quilt Size: 55" x 70"  
Block Size: 12" x 12"  
Number of Blocks: 12

# Thru The Window

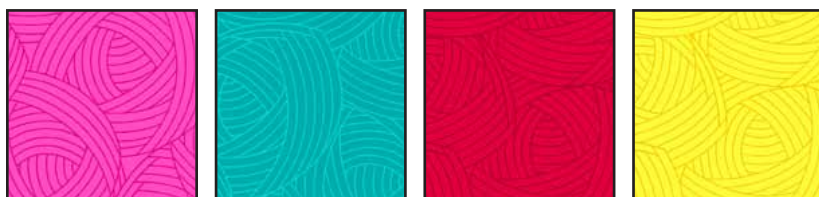
## using Fat Quarters of Lola Textures



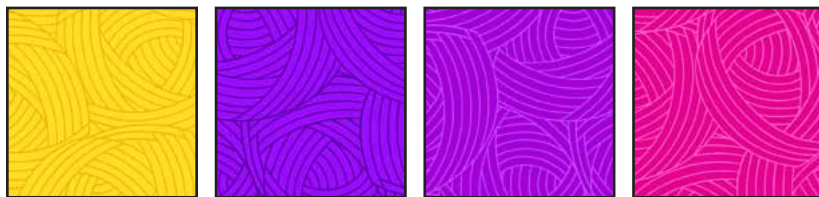
22926 B      22926 BW      22926 G      22926 GQ



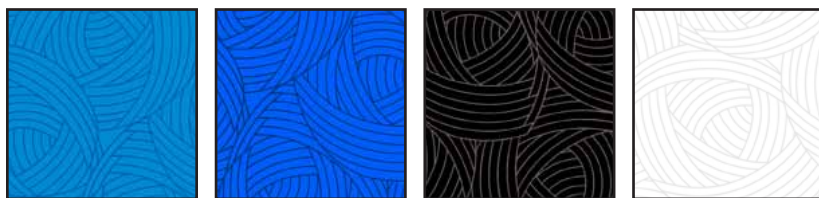
22926 H      22926 HG      22926 O      22926 OC



22926 P      22926 Q      22926 R      22926 S



22926 SO      22926 V      22926 VL      22926 VP



22926 W      22926 Y      22926 J      22926 Z

| FABRIC REQUIREMENTS |         |
|---------------------|---------|
| Design:             | Yards   |
| 22926 B             | Fat 1/4 |
| 22926 BW            | Fat 1/4 |
| 22926 G             | Fat 1/4 |
| 22926 GQ            | Fat 1/4 |
| 22926 H             | Fat 1/4 |
| 22926 HG            | Fat 1/4 |
| 22926 O             | Fat 1/4 |
| 22926 OC            | Fat 1/4 |
| 22926 P             | Fat 1/4 |
| 22926 Q             | Fat 1/4 |
| 22926 R             | Fat 1/4 |
| 22926 S             | Fat 1/4 |
| 22926 SO            | Fat 1/4 |
| 22926 V             | Fat 1/4 |
| 22926 VL            | Fat 1/4 |
| 22926 VP            | Fat 1/4 |
| 22926 W             | Fat 1/4 |
| 22926 Y             | Fat 1/4 |
| 22926 J             | 2/3     |
| 22926 Z             | 3       |
| Backing of choice   | 3 3/4   |

### Cutting Directions:

*Note: WOF = Width of Fabric, measured selvage to selvage, typically 42"-45".*

**Read all instructions prior to cutting and sewing.**

**Label fabric pieces as you cut.**

### 18 Assorted Fabrics (22926 B, BW, G, GQ, H, HG, O, OC, P, Q, R, S, SO, V, VL, VP, W and Y.)

- Cut (2) 6 7/8" squares from 12 assorted fabrics. Cut each square in half on one diagonal to make (12) sets of 4 A triangles.
- Cut a total of (46) 3 7/8" squares. Cut each square in half on one diagonal to make (92) B triangles.
- Cut a total of (24) pairs of the Applique shape.



# Thru The Window

## using Fat Quarters of Lola Textures

### 22926 J Black

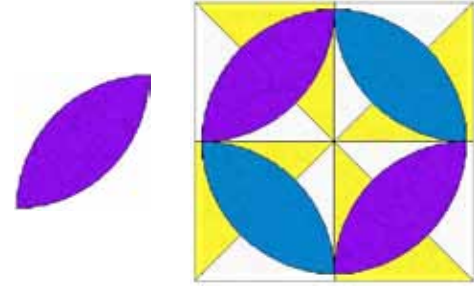
- Cut (2) 2¼" x WOF strips. Cut (20) 2¼" C squares for cornerstones.
- Cut (7) 2¼" x WOF strips for Binding.

### 22926 Z White

- Cut (5) 6⅞" x WOF strips. Cut (24) 6⅞" squares. Cut each square in half on one diagonal to make 48 D triangles.
- Cut (2) 12½" x WOF strips. Cut (31) 2¼" x 12½" E rectangles for sashing.
- Cut (3) 3½" x WOF strips. Cut (46) 2½" x 3½" F rectangles for the pieced border.
- Cut (3) 2½" x WOF G strips.
- Cut (3) 3⅞" x WOF H strips.
- Cut (7) 1½" x WOF I/J strips.

### Backing

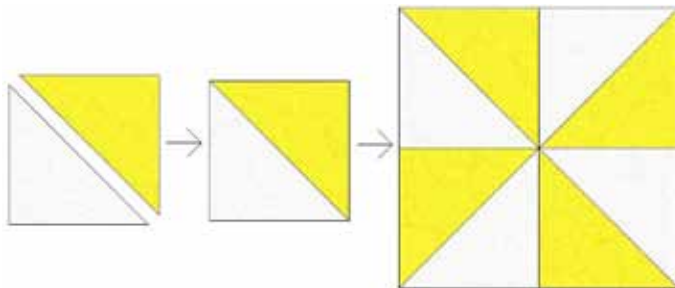
- Cut (2) 66" x WOF strips for Backing.



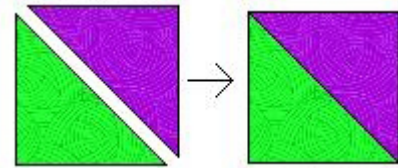
5. With your choice of Applique method, attach the applique shapes to the AD4 squares to create a 12½" square quilt block.
6. Repeat Steps 4 and 5 to do the same for the remaining AD4 squares.
7. Sew 2 B triangles together to make a 3½" BB square. Repeat to make (46) 3½" BB squares.

### Block Assembly Directions:

1. Take one set of A triangles. Sew an A and a D triangle together to make a 6½" AD square unit. Do the same to the other 3 A triangles in the set to make 4 AD squares.
2. Layout the AD squares to form a pinwheel. Sew the 4 AD squares together into a 12½" AD4 square.
3. Repeat Steps 1 and 2 for each set of A triangles to make 12 AD4 squares.



4. Select 2 pairs of Applique shapes and place on an AD4 square as shown. Be sure to leave a ¼" seam allowance along the outside edges.

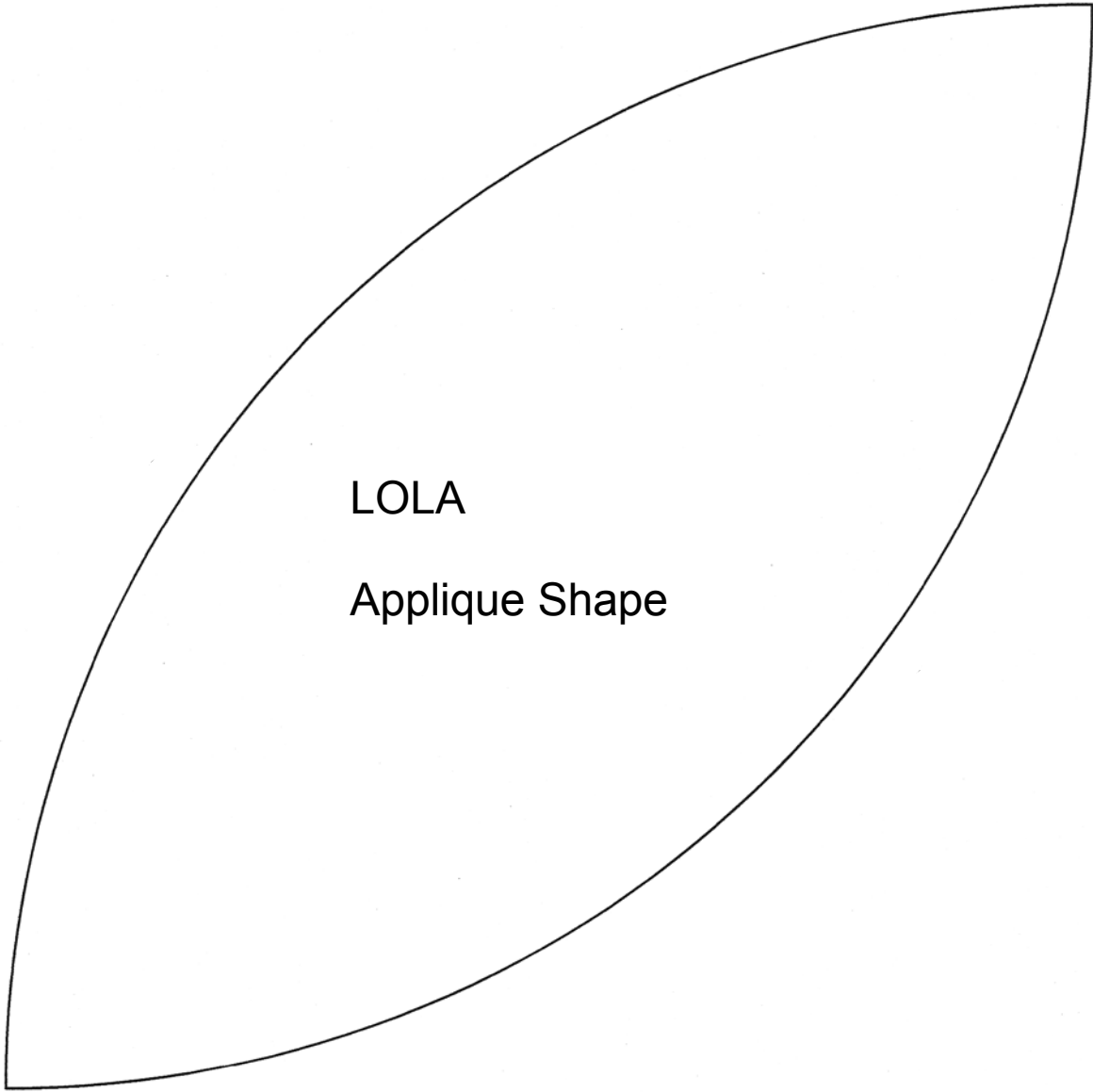


### Quilt Assembly Directions:

8. Layout the 12 Blocks, 20 C cornerstone squares and 31 E sashing rectangles as shown in the Quilt Layout Diagram.
9. Sew units within each row together. Then, sew the rows together to form a 43½" x 57¼" quilt center.
10. Sew the 3 G strips together into 1 long strip. Cut (2) 2½" x 57¼" strips. Sew one strip to each side of the quilt center.
11. Sew the 3 H strips together into 1 long strip. Cut (2) 3⅞" x 47½" strips. Sew one strip to the top of the quilt and the other strip to the bottom of the quilt. The quilt should measure 47½" x 62½" at this point.
12. Sew 12 BB squares and 13 F rectangles together as shown. Make 2 of these pieced side border strips.







LOLA

Applique Shape

please print at 100%



1" mark is shown for scale verification.