

X  
X  
X  
X  
X  
X  
X  
X  
X  
X  
X  
X

## A car seat with a quilted grey cover and a blue and white patterned border. Various items are stored in pockets: a smartphone, sunglasses, a blue polka-dot pouch, a blue pouch with stars, a white pouch with moon faces, a blue pouch with a large moon face, a black water bottle, a spiral notebook, a blue folder, and a white pouch with moon faces.

XXXXXXXXXXXXXXXXXXXXXXXXXXXX

# SPACE TRIP

DESIGNED BY

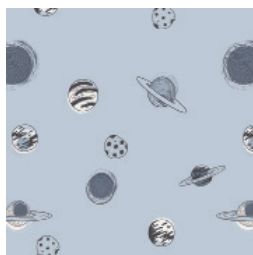
AGFstudio



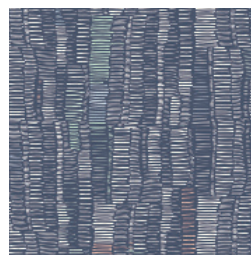
FABRICS DESIGNED BY AGFstudio



CAP-ST-1106  
TWINKLY PHASES



CAP-ST-1108  
PLANETARIUM



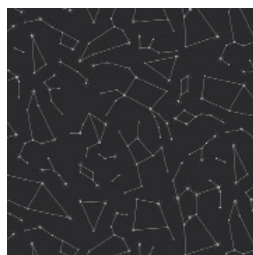
CAP-ST-1103  
INTERRUPTED SIGNAL



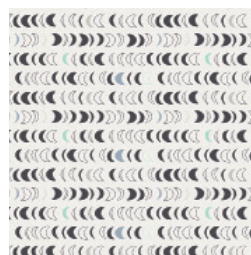
CAP-ST-1104  
TO BEARFINITY & BEYOND!



CAP-ST-1107  
STARDUST



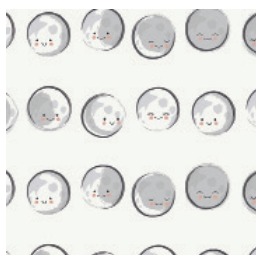
CAP-ST-1101  
CONNECT THE STARS



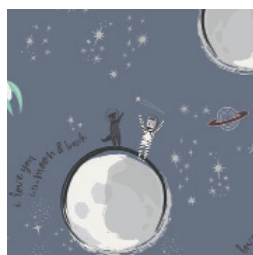
CAP-ST-1102  
LUNAR STAMPS



CAP-ST-1109  
ASTROMAGICAL-FULL-REPEAT



CAP-ST-1105  
HAPPY MOONS



CAP-ST-1100  
SPATIAL FRIENDS



FEEL THE DIFFERENCE ©2018 Courtesy of Art Gallery Quilts LLC. All Rights Reserved.



# SPACE TRIP

FINISHED SIZE | 18" x 28"

## FABRIC REQUIREMENTS

Fabric <b>A</b>	CAP-ST-1108	¼ yd.
Fabric <b>B</b>	CAP-ST-1107	FQ
Fabric <b>C</b>	CAP-ST-1100	FQ
Fabric <b>D</b>	CAP-ST-1105	FQ
Fabric <b>E</b>	CAP-ST-1101	FQ
Fabric <b>F</b>	CAP-ST-1102	FQ
Fabric <b>G</b>	PE-430	1 ½ yd.

### BINDING FABRIC

CAP-ST-1103 (Fabric **H**) ¼ yd.

### OTHER MATERIALS

Medium Weight Craft Interfacing  
2 yds.

¼" Elastic- 10"

1" Elastic-26"

Batting (28" x 19")

## CUTTING DIRECTIONS

*¼" seam allowances are included.  
WOF means width of fabric.*

### Fabric **A**

- One (1) 6" H x 10"W (Pocket 1)

### Fabric **B**

- One (1) 6" H x 10"W (Pocket 2)
- One (1) 11" H x 12" W (Pocket 7)

### Fabric **C**

- Two (2) 9" H x 10"W (Pockets 3 & 5)
- One (1) 2" H x 4" W (Sunglasses strap)

### Fabric **D**

- One (1) 9" H x 13" W (Pocket 4)
- One (1) 4 ½" H x 12" W (Pocket 9)

### Fabric **E**

- One (1) 10" square (Pocket 6)

### Fabric **F**

- One (1) 7" H x 12"W (Pocket 8)

### Fabric **G** & Interfacing:

- Two (2) 4 ½" H x 10" W (Pocket 1)
- One (1) 7 ½" H x 31" W (Row 2)
- One (1) 8 ½" H x 10" W (Pocket 6)
- One (1) 9 ½" H x 12" W (Pocket 7)
- One (1) 5 ½" H x 12"W (Pocket 8)
- One (1) 3" H x 12" W (Pocket 9)

### Main Body

- Two (2) 28" H x 19" W in Fabric **F**
- One (1) 28" H x 19" W in Interfacing & Batting

### Loop

- One (1) 1 ½" H x 4" W in Fabric **F**

### Fabric **H**

- One (1) 4" H x 13"W (Top Strap)

## CONSTRUCTION

*Sew all rights sides together with ½" seam allowance.*

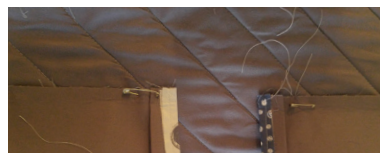
- Fuse interfacing to the wrong sides of all the pocket lining pieces (Fabric ) and one of the organizer main body pieces.
- Make a template for the curved top portion of the main body pieces. Cut a rectangle 7" H x 19" W and fold in half. Measure out 5" from the fold at the top and mark a point ½" from the bottom edge. Draw a smooth curve connecting both points and cut off the corners at the curve. Lay this template against the Main Body pieces, lining up the top edges and sides and trimming the edges at the curves. At this point you may want to measure your car seat to see if you need to change the dimensions of the organizer. You may want to make a full size Main Body Template to lay against your car seat back.
- Sew together the fabrics for the second row of pleated pockets. (fabrics C > D > C for Pockets 3, 4, 5) Sew them at a ½" seam allowance. Press the seams open.

- Match all pocket fabrics to their corresponding linings, wrong sides together, lining up the bottom edges so they match. With the lining facing up, fold over the pocket fabric  $\frac{3}{4}$ " so the edge meets the top edge of the lining fabric, then fold over another  $\frac{3}{4}$ " so the top edge of the lining is enclosed in the pocket fabric and press. Top stitch at  $\frac{5}{8}$ ". Press again to set stitches.
- Now stack Pockets 7, 8 and 9 together, with 7 on the bottom and 9 on the top. Match bottom edges and pin together. Mark straight lines from bottom to the top edge of pocket 8 at 2", 4" and 6" from the left edge. Sew the marked lines, making sure to backstitch a couple times at the top edge of pocket 8.
- Insert the  $\frac{1}{4}$ " elastic piece in the top edge of Pocket 6. Tack it down on the right side and safety pin at the other side so it does not become drawn into the casing during handling. Leave the pocket flat for now.
- Finish the following edges of the pockets with either a serger or overcast/zig-zag stitch on the sewing machine.
  - Pocket 1- Bottom & right edge
  - Pocket 2- Bottom & left edge
  - Row 2 (Pockets 3,4,5) - Bottom edge
  - Pocket 6- right edge
  - Pocket 7/8/9- left edge
- Prepare the main body of the organizer as you would a quilt sandwich: a main body piece right side down, batting, topped with the remaining main body piece right side up. Safety pin layers together and quilt on the diagonal every two inches. I do not recommend a straight line quilting on the vertical or horizontal axis as it would highlight any little alignment issues with the pockets. A free motion motif would suit as well if you prefer that to diagonal lines.

### Finishing Pockets 1 & 2

- Press under  $\frac{1}{2}$ " on the right side of Pocket 1 and the left side of Pocket 2. Baste, pin or elmer's glue-baste the edges down.
- Make  $\frac{1}{2}$ " pleats on those same sides, making sure to end the pleats about  $\frac{1}{4}$ " away from the pressed under edges so that you can easily sew that side down. Press pleats and clip or pin in place.

- Mark a line 5" down from the top of the organizer and line up the raw bottom edges of Pockets 1 & 2 to it, lining facing up. Line up the bottom edges of pockets to the sides of the organizer and sew at  $\frac{1}{2}$ " seam allowance.
- Flip the pockets up and sew down the center side seams on pockets at approx.  $\frac{1}{4}$ ", making sure not to catch the pleat in sewing. Be sure to backstitch several times on top and bottom of stitching.



Pockets 1 & 2



Pockets 3,4,5

### Row 2: Pockets 3, 4 & 5

- Finished size of pockets will be 5" wide for 3 & 5 and 8" wide for Pocket 4.
- Press 1" pleats towards the seams and at the side edges. Pleat edges should just touch each other and be centered over the seams. For side edge pleats make sure the pleated edge ends a little over  $\frac{1}{2}$ " away from the side edge (To leave room for binding and any minimal trimming). Clip or pin pleats in place.
- Measure down 9" from the bottom edge of Pockets 1 & 2 and mark a line. Flip the row upside down, lining side up and line up the bottom edge to the marked line. Sew at  $\frac{1}{2}$ " from the edge and flip up. There should be approx. 2  $\frac{1}{2}$ " between rows.
- Stitch in the ditch between center seams to create the individual pockets, making sure to backstitch at both ends and not catch the pleats while sewing.
- Baste stitch the sides down to the organizer

XX

- Edge stitch all around.
- Fold under  $\frac{1}{2}$ " on each end.
- Place between Pockets 1 & 2, lining up the top edge so it matches the top edge of the pockets and stitch down the sides.

## Loop

- Press and sew the loop strip in the same manner as for the sunglasses strap, leaving the ends raw.
- Fold in half and line up raw edges to the back of the car organizer about an inch below Pocket 1. Tack down.

- 4" x13"
- Fold and press in the same manner as sunglasses strip.
- Tack down ends to the back of the organizer at 5" on either side of the center point (center 10").

- Cut a piece of 1" elastic approximately 25" long and tack to the back of the organizer where your seat has it's bend. For the car this organizer was modeled on it's at approx. 5" from the bottom of the organizer.

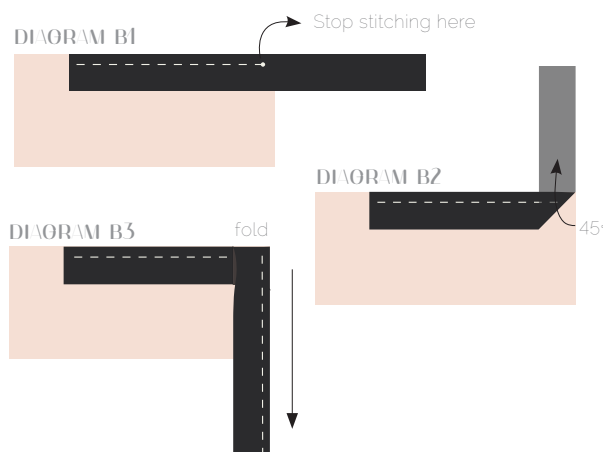


- Press your sunglasses strap strip in half lengthwise, then open and fold the edges in so they meet at the middle fold line and press sides. Fold closed and press again.

## BINDING

- For double binding at  $\frac{3}{8}$ " Cut and piece together a strip  $2\frac{1}{2}$ " x 96". Press in half and pin to the right side of organizer, raw edges even with edge of organizer. Start sewing the binding strip in the middle of one of the sides, placing the strip right side down and leaving an approximated 5" tail. Sew with  $\frac{3}{8}$ " seam allowance.
- © Stop stitching  $\frac{3}{8}$ " before the bottom corner (**DIAGRAM B1**). Clip the threads. Remove from under the machine presser foot. Fold the strip in a motion of 45° and upward, pressing with your fingers (**DIAGRAM B2**). Hold this fold with your finger, bring the strip down in line with the next edge, making a horizontal fold that aligns with the top edge of the quilt (**DIAGRAM B3**). Start sewing at  $\frac{3}{8}$ " of the border, stitching all the layers. Do the same for the other bottom corner.
- When sewing binding make sure all loops and straps are out of the way and go slowly around the top curves.

- © Stop stitching before you reach the last 5 or 6 inches. Cut the threads and remove the quilt from under the machine presser foot. Lay the loose ends of the binding flat along the quilt edge, folding the ends back on themselves where they meet. Press them together to form a crease. Using this crease as the stitching line, sew the two open ends of the binding with right sides together (you can help yourself marking with a pencil if the crease is difficult to see).
- © Trim seam to  $\frac{1}{4}$ " and press open. Complete the sewing. Turn binding to back and either stitch in the ditch or edge stitch on the right side of organizer to tack down binding in the back or hand sew.



[artgalleryfabrics.com](http://artgalleryfabrics.com)

NOTE: While all possible care has been taken to ensure the accuracy of this pattern, We are not responsible for printing errors or the way in which individual work varies. Please read instructions carefully before starting the construction of this quilt. If desired, wash and iron your fabrics before starting to cut.