



Designed By flaurie & finch

Featuring **Serene Spring** by flaurie & finch for RJR Fabrics



Finished Size 54" x 70"



#quiltwithlove

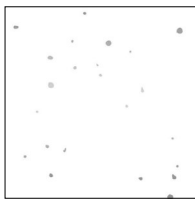
Designed by flaurie & finch





# Serene Sky Color Card

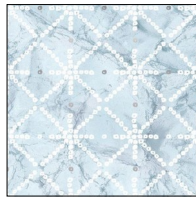
Featuring the Serene Spring fabric collection



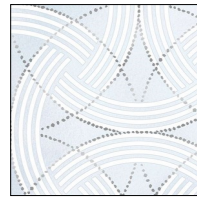
2792-022



3254-01



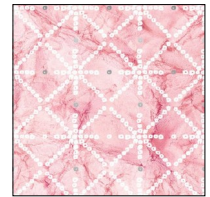
3256-01



3255-01



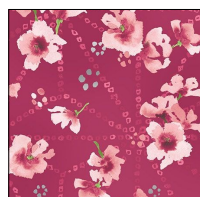
3251-01



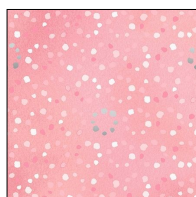
3256-03



3250-01



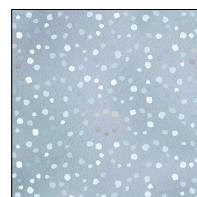
3253-03



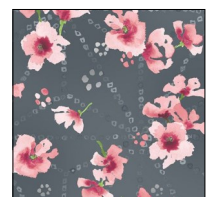
3257-03



2891-16



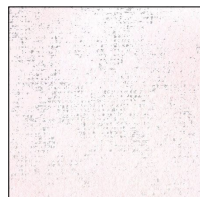
3257-01



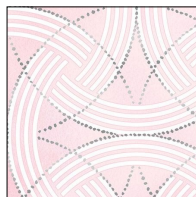
3253-01



3254-03



2891-14



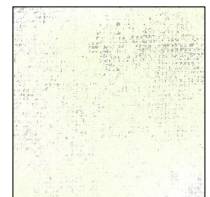
3255-03



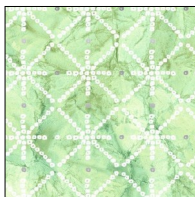
3252-02



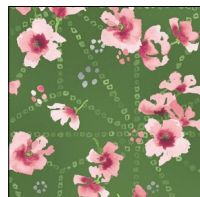
3254-04



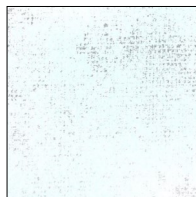
2891-15



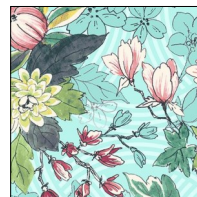
3256-04



3253-04



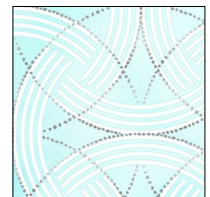
2891-13



3251-02



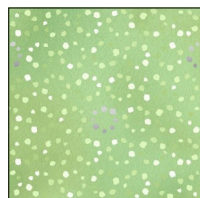
3254-02



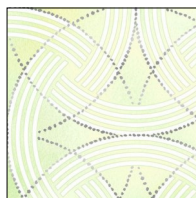
3255-02



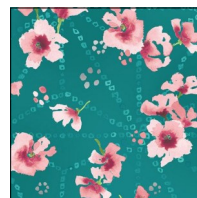
3251-03



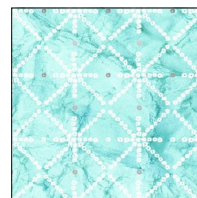
3257-04



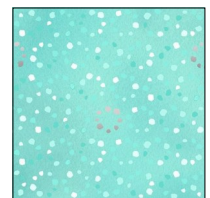
3255-04



3253-02



3256-02



3257-02



3252-01





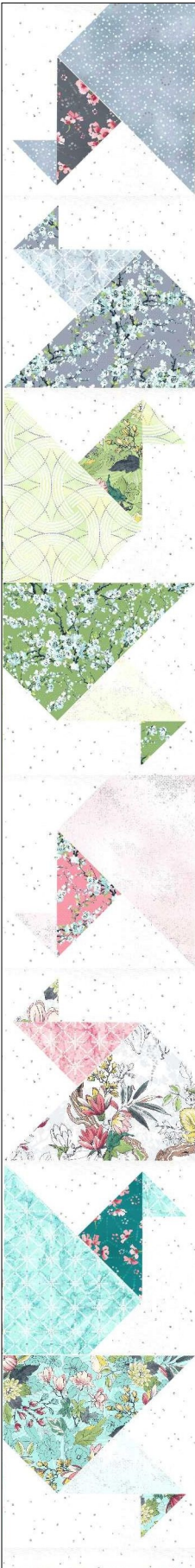
## Fabric Requirements

	Color	SKU	Needed
A	White Silver	2792-022	3-3/8 yards
B	Fog	3254-01	1 yard*
C	Mist	3256-01	1 fat quarter
D	Frost	3255-01	1 yard
E	Fog	3251-01	1 fat quarter
F	Blush	3256-03	1 fat quarter
G	Frost	3250-01	1 fat quarter
H	Cool Cherry	3253-03	1 fat quarter
I	Blush	3257-03	1 fat quarter
J	Frost	2891-16	1 fat quarter
K	Fog	3257-01	1 fat quarter
L	Rain Cloud	3253-01	1 fat quarter
M	Blush	3254-03	1 fat quarter
N	Pearl Pink	2891-14	1 fat quarter
O	Pearl Pink	3255-03	1 fat quarter
P	Pearl Pink	3252-02	1 fat quarter
Q	Seedling	3254-04	1 fat quarter
R	Frozen Leaf	2891-15	1 fat quarter
S	Sprout	3256-04	1 fat quarter
T	Grass	3253-04	1 fat quarter
U	Ice	2891-13	1 fat quarter
V	Breeze	3251-02	1 fat quarter
W	Breeze	3254-02	1 fat quarter
X	Ice	3255-02	1 fat quarter
Y	Seedling	3251-03	1 fat quarter
Z	Seedling	3257-04	1 fat quarter
AA	Sprout	3255-04	1 fat quarter
BB	Wellspring	3253-02	1 fat quarter
CC	Breeze	3256-02	1 fat quarter
DD	Breeze	3257-02	1 fat quarter
EE	Ice	3252-01	1 fat quarter
	Backing		3-1/2 yards

Yardage is based on fabric 40" wide.

Fat quarters are assumed to be 18" x 22"

\* Includes binding







# Cutting



## Fabric A (White Silver)

- (48) 4" x 2-3/4" rectangles (A2)
- (48) 3" x 6-3/4" rectangles (A3)
- (48) 6" x 5-1/2" rectangles (A5)
- (48) 4" x 3-3/4" rectangles (B1)
- (6) 1 1/2" x WOF strips for Border 1

## Fabric B (Fog)

- (2) 2" x 3" rectangles (A1)
- (2) 6-3/4" x 9-1/4" rectangles (B2)
- (1) 3-1/2" x 7" rectangle (A4)
- (7) 2-1/4" x WOF strips, sewn end to end, folded in half and pressed for binding

## Fabric D (Frost)

- (2) 2" x 3" rectangles (A1)
- (2) 6-3/4" x 9-1/4" rectangles (B2)
- (1) 3-1/2" x 7" rectangle (A4)
- (7) 2-1/2" x WOF strips for Border 2

## Fabric Y (Seedling) and Fabric E (Fog)

- (3) 2" x 3" rectangles (A1)
- (3) 6-3/4" x 9-1/4" rectangles (B2)
- (3) 3-1/2" x 7" rectangles (A4)

## Fabric G (Frost), Fabric I (Blush), Fabric K (Fog), Fabric N (Pearl Pink), Fabric P (Pearl Pink), Fabric Q (Seedling), Fabric S (Sprout), Fabric V (Breeze), Fabric X (Ice), Fabric AA (Sprout), Fabric CC (Breeze), Fabric EE (Ice)

- (2) 2" x 3" rectangles (A1)
- (2) 6-3/4" x 9-1/4" rectangles (B2)
- (1) 3-1/2" x 7" rectangle (A4)

## Fabric C (Mist), Fabric F (Blush), Fabric H (Cool Cherry), Fabric J (Frost), Fabric L (Rain Cloud), Fabric M (Blush), Fabric O (Pearl Pink), Fabric R (Frozen Leaf), Fabric T (Grass), Fabric U (Ice), Fabric W (Breeze), Fabric Z (Seedling), Fabric BB (Wellspring), Fabric DD (Breeze)

- (1) 2" x 3" rectangle (A1)
- (1) 6-3/4" x 9-1/4" rectangle (B2)
- (2) 3-1/2" x 7" rectangles (A4)

## Backing

Batting 62" x 78"

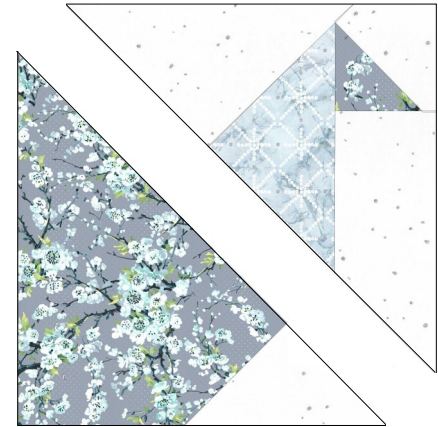


# Block Assembly

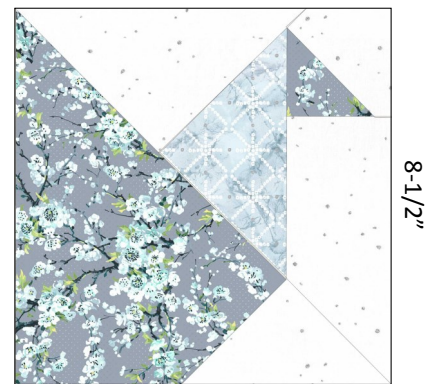
Finished block size 8"

## Creating the Foundation Paper-Pieced Blocks

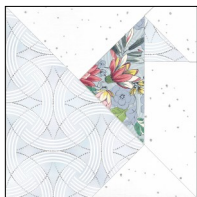
1. Print out 48 copies of the foundation pattern on Pages 7 and 8 onto foundation paper. Be sure to print at 100 % actual size, no scaling, and do not select "Fit to Page." Use the test square to check that your foundations are the right size.
- Join the two pages of the foundation pattern by aligning the long vertical lines, then tape. Rough cut each foundation pattern into two sections—the A section and the B section. Do not cut the sections out precisely just yet.
2. Use (1) A 4" x 2-3/4" rectangle (A2), (1) A 3" x 6-3/4" rectangle (A3), (1) A 6" x 5-1/2" rectangle (A5), (1) B 2" x 3" rectangle (A1), and (1) C 3-1/2" x 7" rectangle (A4) to foundation piece (1) Section A (A1-A5). Use a short stitch length to make it easier to remove the foundation paper later on.
3. Use (1) A 4" x 3-3/4" rectangle (B1) and (1) B 6-3/4" x 9-1/4" rectangle (B2) to foundation piece (1) Section B (B1-B2).
4. Trim each section, leaving an exact 1/4" seam allowance on all 3 sides.
5. Pin the A and B sections, matching seam allowances and sew to create Block A. Trim to 8 1/2" square.
6. Repeat steps 2-5 to create the blocks shown.



8-1/2"



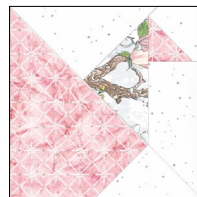
Block A—Make 2



Block B—Make 2



Block C—Make 2



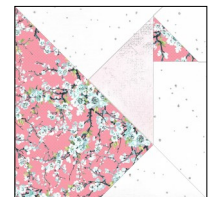
Block D—Make 1



Block E—Make 1



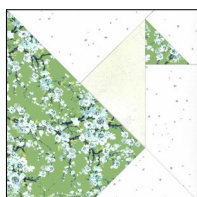
Block F—Make 2



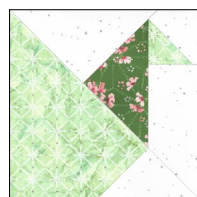
Block G—Make 1



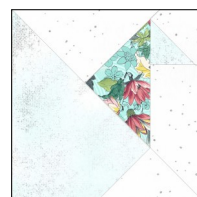
Block H—Make 1



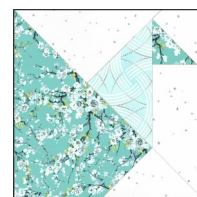
Block I—Make 2



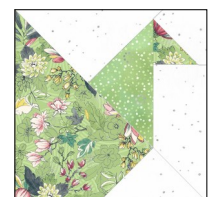
Block J—Make 2



Block K—Make 1



Block L—Make 1



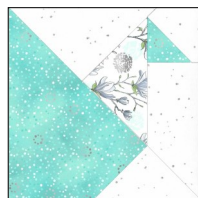
Block M—Make 2



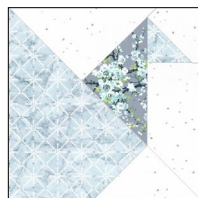
Block N—Make 2



Block O—Make 1



Block P—Make 1



Block A2—Make 1



Block B2—Make 1



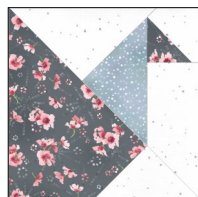
Block C2—Make 1



Block D2—Make 2



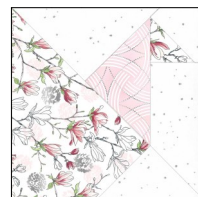
Block E2—Make 2



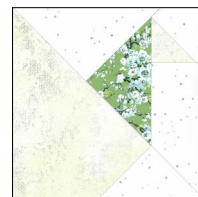
Block F2—Make 1



Block G2—Make 2



Block H2—Make 2



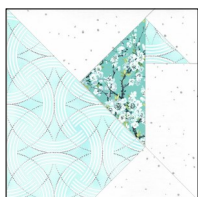
Block I2—Make 1



Block J2—Make 1



Block K2—Make 2



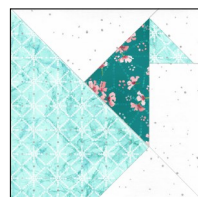
Block L2—Make 2



Block M2—Make 1



Block N2—Make 1



Block O2—Make 2



Block P2—Make 2

## Assembling the Quilt Center

1. Using the Quilt Assembly diagram, arrange blocks into rows. Note the orientation of each block.
2. Sew each row together. Press seams within each row in the same direction, alternating the direction with each row so that Row 1 is pressed to the left, Row 2 is pressed to the right, and so on.
3. Sew the rows together, matching block seams. Press all the row seams down. Quilt Center should measure 48-1/2" x 64-1/2".

## Quilt Assembly

1. Sew the A Border 1 strips together. Cut (2) 1-1/2" x 64-1/2" strips and sew to the sides of Quilt Center. Cut (2) 1-1/2" x 50-1/2" Border 1 strips and sew to top and bottom of Quilt Center. Quilt should measure 50-1/2" x 66-1/2".
2. Sew the D Border 2 strips together. Cut (2) 2-1/2" x 66-1/2" strips and sew to the sides of Quilt Center. Cut (2) 2-1/2" x 54-1/2" Border 2 strips and sew to top and bottom of Quilt Center. Quilt should measure 54-1/2" x 70-1/2".
3. Layer backing, batting, and the quilt top.
4. Baste, then quilt as desired. Bind with B 2-1/4" strips.



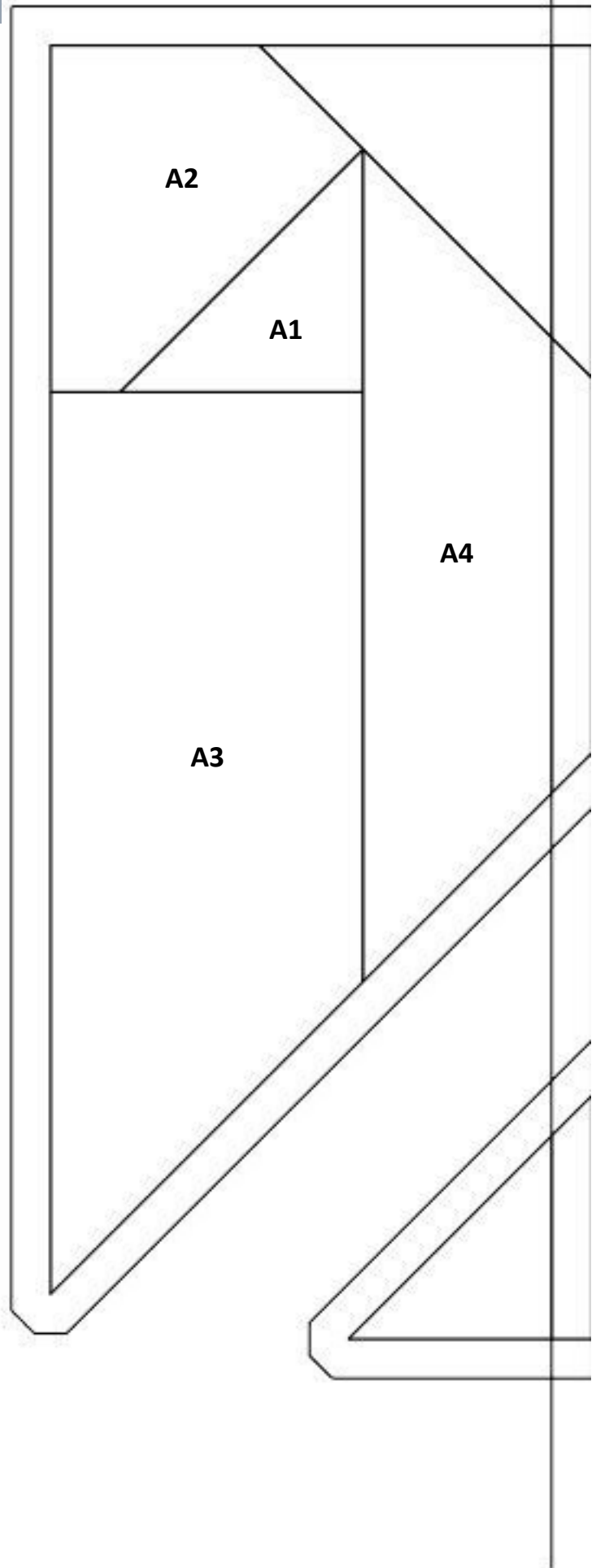
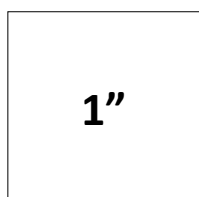


# Quilt Assembly Diagram





To ensure your foundations are the correct size, measure the 1" test square.







**A5**

**B2**

**B1**

**1"**