

MAYWOOD  STUDIO

SEASCAPE RUNNER



Seascape Table Runner

Featuring the Seascape fabric collection from Maywood Studio

15½" x 57½"

maywoodstudio.com

SEASCAPE



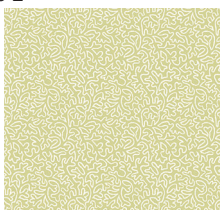
Fabric 1
10675-Z



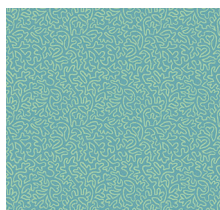
Fabric 2
10670-Z



Fabric 3
10679-C



Fabric 4
10679-G



Fabric 5
10679-Q
*also used for binding

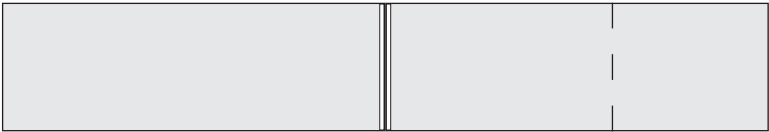
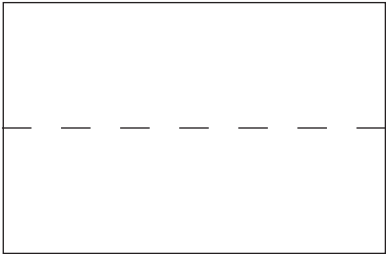
WOF - Width of Fabric
LOF - Length of Fabric
RST - Right Sides Together
HST - Half Square Triangle

MAYWOOD  STUDIO

Maywood Studio makes every effort to make sure our patterns are accurate.
Check for updates at maywoodstudio.com/projects

Fabric Requirements		
Fabric 1	10675-Z	5/8 yard
Fabric 2	10670-Z	1/2 yard
Fabric 3	10679-C	1/8 yard
Fabric 4	10679-G	1/8 yard
Fabric 5	10679-Q includes binding	1/2 yard
Backing	Your Choice	1 yard*

*Backing: Cut the backing in half along the length of the fabric and sew the short ends together. Trim to measure approximately 20" x 63"



Cutting

Fabric 1
A (1) 3" x WOF strip into (15) 3" squares.*use the leftover from B for the remaining square.
B Cut (2) 4-1/2" x WOF strips into (10) 4-1/2" squares.
Side Borders
 Cut (3) 2-1/2" x WOF strips. Sew end to end. Subcut (2) 2-1/2" x 58" side borders.

Fabric 2
C Cut (2) 7-1/2" x WOF strips into (10) 7-1/2" squares. Cut 1x on the diagonal.

Fabric 3 and 5
D Cut (6) 3" squares for HSTs
E Cut (4) 2-1/2" squares

Fabric 5 Binding
 Cut (4) 2-1/4" x WOF strips into

Seascape Table Runner Instructions

Please read all instructions before you begin. Seam allowance is 1/4". Fabric is abbreviated as by number. For example, Fabric 1 is 'F1'. Press seams open.

Make Fish Blocks

2-at-a-time HSTs (Fig. 1)

1. Draw a diagonal line from corner to corner on the F1-A squares.
2. Place an F1-A square RST over an F5-D square. Sew 1/4" away on either side of the marked line.
3. Cut on the marked line. Press toward F5. Trim to 2-1/2" square.

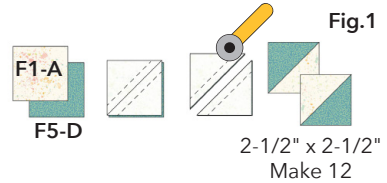


Fig. 1

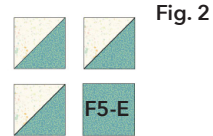


Fig. 2

Repeat to make 6 pairs for 12 F1/F5 HSTs.

Fish Units

4. Arrange three HST units and one F5-E unit into two rows of two as shown to the right. (Fig. 2)

5. Sew into rows, then sew the rows together. Press. Make 2. (Fig. 3)

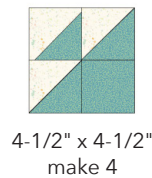


Fig. 3

6. Arrange two step 5 units and two F1-B squares into 2 rows as shown to the right. (Fig. 4)

7. Sew into rows, then sew the rows together. Press. Make 2.

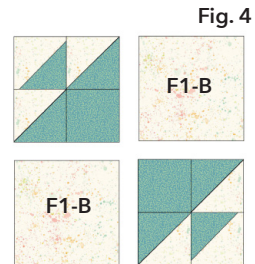
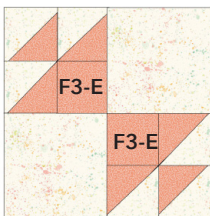


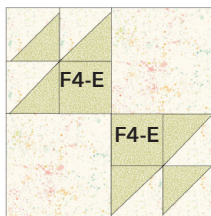
Fig. 4

Repeat steps 1-7 to make the Fish Units shown below.

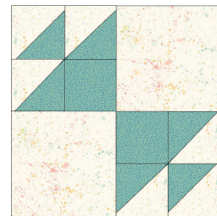
*For F4, make 3 pair of HST units for 6 total HSTs.



8-1/2" x 8-1/2"
make 2



8-1/2" x 8-1/2"
make 1



8-1/2" x 8-1/2"
make 2

Fish Blocks Continued

Add the Corners

- 1. Sew an F2-C triangle to the one side of a F5 Fish Unit. Press. (Fig. 5)
- 2. Place an F2-C triangle on the opposite corner and sew. Press. (Fig. 6)
- 3. Repeat on the remaining two corners. (Fig. 7)
- 4. Trim the block to 12" x 12" making sure that there is 1/4" seam allowance all the way around the block. (Fig. 8)

Repeat steps 1-4 with the remaining Fish Units.

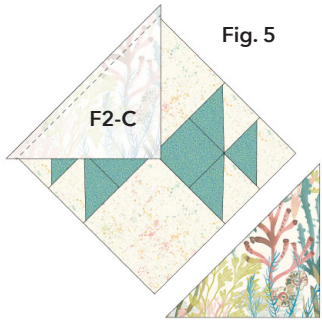


Fig. 5

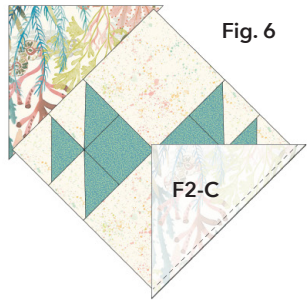


Fig. 6

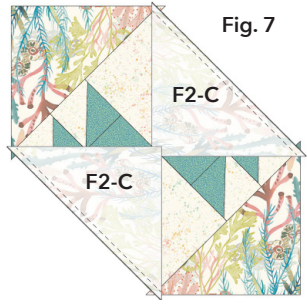


Fig. 7

Trim the block and leave 1/4" seam allowance from the corner to the edge.



Fig. 8



12" x 12"

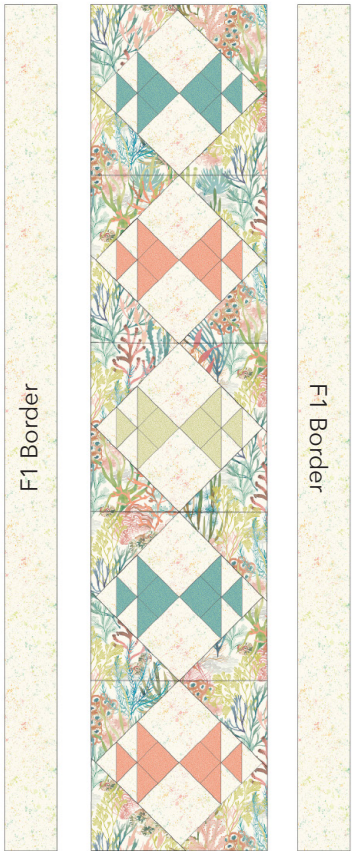
Top Assembly

- 1. Lay the blocks out as illustrated below. Sew into the runner top. Press. (Fig. 9)
- 2. Sew a F1 Border to opposite sides of the runner top. Press. (Fig. 10)

Fig. 9



Fig. 10



Finishing

1. Layer the backing (wrong side up), batting and runner top (right side up). Baste layers to secure. Quilt as desired. Trim the excess backing and batting.
2. Sew the binding strips together into one continuous strip. Press in half length-wise. Sew the binding to the runner with a $\frac{1}{4}$ " seam allowance. Turn the binding to the back side of the runner and stitch down by hand with matching thread.



Runner Planning Diagram

Use this template to plan your quilt

