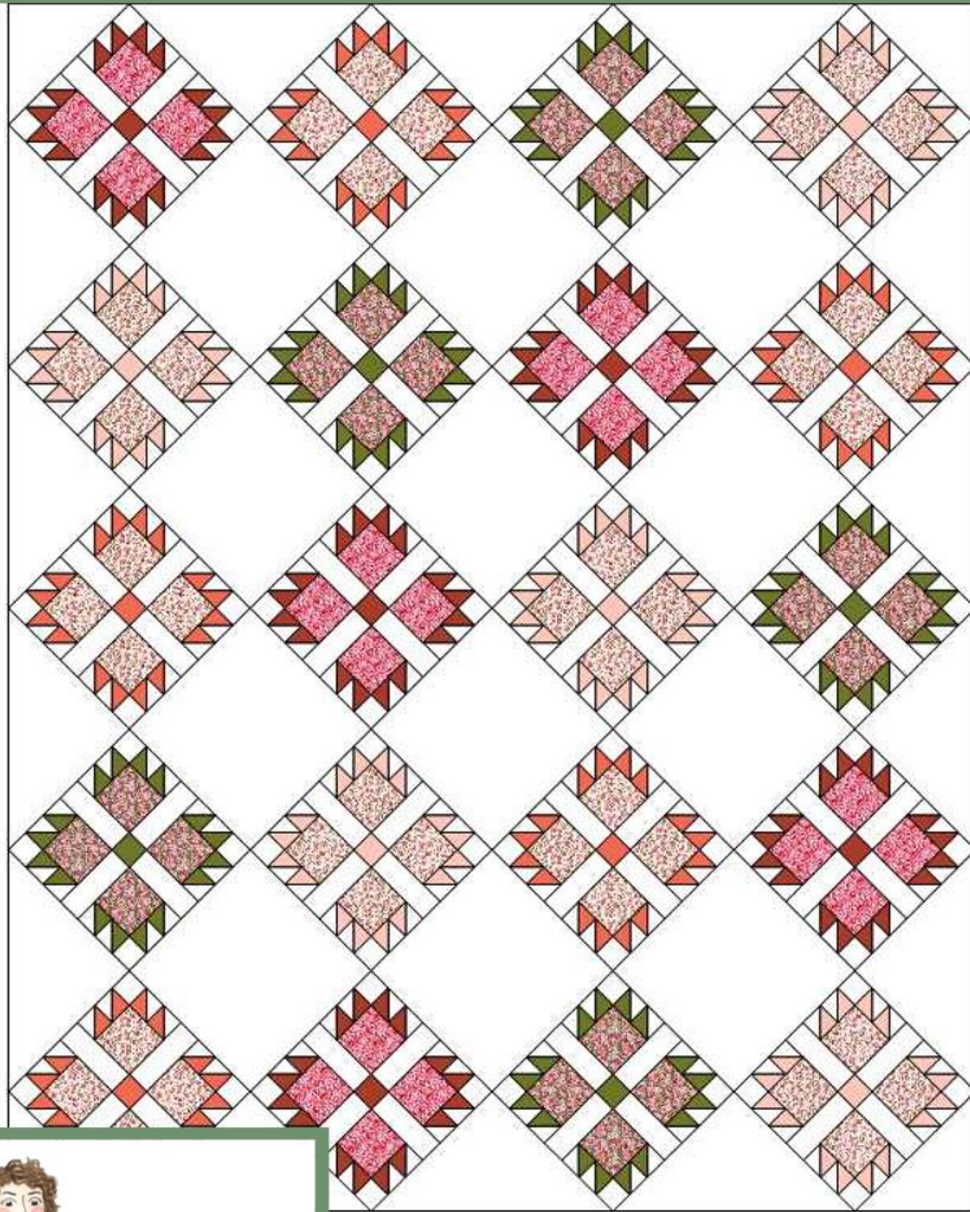


# Roses Among the Thorns

#103



Bee  
**Sew**  
Inspired

A Quilt Pattern

68" X 85"

Designed by Jennifer Long



# Roses Among the Thorns

A Quilt Pattern Designed for

Paintbrush Studio

By Jennifer Long

68" x 85"

Thank you for downloading our Roses Among the Thorns Pattern. I am so honored that this design has inspired you and I am looking forward to seeing your finished quilt! I wanted to design a classic pattern with a modern twist. The four large squares, in the center of each "bear paw" block, are perfect to showcase the beautiful prints of **Paintbrush Studio's Spring Bouquet Fabric**. They represent an opening flower! The half-square triangles that are surrounding the outside of each block, represent the thorns. They are all in a coordinating Painter's Palette Solid Fabrics.

*We **can** complain because **rose** bushes have **thorns**, or rejoice because **thorn** bushes have **roses**.*

- Abraham Lincoln

-

If you share on social media, we would really appreciate it if you used the hashtags

#PaintbrushStudio #SpringBouquetFabric #RosesAmongtheThornsQuilt and #BeeSewInspired.

Thank you for letting a little piece of my heart into your sewing room!

Sincerely,

*Jennifer Long*



Paintbrush Studio  
Bee Sew Inspired

2 | Page



# Roses Among the Thorns Quilt

Finished quilt: apx. 68" by 85"

© 2020 Jennifer Long, All Rights Reserved. Bee Sew Inspired.

Pattern questions please direct to [beesewinspired@yahoo.com](mailto:beesewinspired@yahoo.com)

This pattern is NOT FOR SALE. Free Pattern at [www.paintbrushstudio.com](http://www.paintbrushstudio.com)

## Instructions:

Please read through all the directions first before starting. Assume 1/4" seam allowance. Press all seams in the direction of the arrows on the diagrams. Yardage is based on a 42" width of fabric.

WOF: Width of Fabric;

LOF: Length of Fabric;

RST: Right sides together

HST: Half-Square-Triangle

## Fabric Requirements:

✂ 1/3 yard of each of the four Main Spring Bouquet Prints 1202-1573, 1202-1571, 1202-1570, 1202-1565

✂ 1/2 yard of each of the four Painter's Palette Solids 120-167 Scarlet, 120-066 Lipstick, 120-034 Hunter, 120-069 Carnation

✂ 5 yards background fabric Painter's Palette Solid 120-000-white

✂ 5 1/2 yards backing of quilt

✂ 3/4 yard for binding





## Cutting your Fabric:

### MAIN FABRIC:

From each of the four Spring Bouquet Prints:

✂ Cut 20 squares 4" x 4"

### SOLID FABRIC:

From each of the four Painter's Palette Solids:

✂ Cut 10 squares 6" x 6" for half-square triangles (thorns).

✂ Cut 5 squares 2" x 2" for center of block.

### BACKGROUND FABRIC:

From Painter's Palette Solid 120-000-white:

For Bear Paw Blocks:

✂ Cut 40 squares 6" x 6" for half-square triangles (thorns).

✂ Cut 80 rectangles 2" x 5 ¼"

✂ Cut 80 squares 2 ¼" x 2 ¼"

For Setting Blocks:

✂ Cut 12 squares 12 ½" x 12 ½" for solid setting blocks.

✂ Cut 4 squares 18 ¼" x 18 ¼" for side setting blocks.

- Sub-cut each square twice on the diagonal to make 4 triangles per square.

- You will need a total of 14 sub-cut triangles. (You will have two extras)

✂ Cut 2 squares 9 ¼" x 9 ¼" for corner setting blocks.

- Sub-cut each square once on the diagonal to make 2 triangles per square.

- You will need a total of 4 sub-cut triangles.

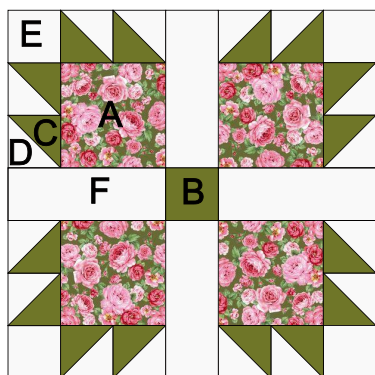




## Bear Paw Block:

Unfinished Block Size: 12 ½" X 12 ½"

Make 20 Bear Paw Blocks (4 sets of 5 Bear Paw Blocks)



Bear Paw Blocks		1 Block	20 Blocks
Main Fabric: Spring Bouquet	A	4 – 4" X 4" squares	20 – 4" X 4" squares
	B	1 – 2" square	20 – 2" squares
Thorn Fabric: Painter's Solid Fabric	C	2 – 6" X 6" squares (using the 8 at a time HST method)	40 – 6" X 6" squares (using the 8 at a time HST method)
	D	2 – 6" X 6" squares (using the 8 at a time HST method)	40 – 6" X 6" squares (using the 8 at a time HST method)
Background Fabric: Painter's Solid Fabric	E	4 – 2 ¼" squares	80 – 2 ¼" squares
	F	4 – 2" X 5 ¾" rectangles	80 – 2" X 5 ¾" rectangles

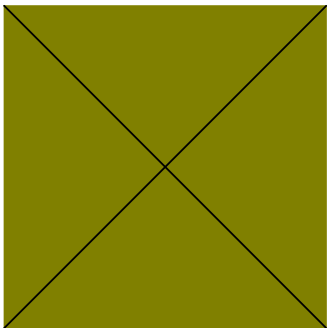




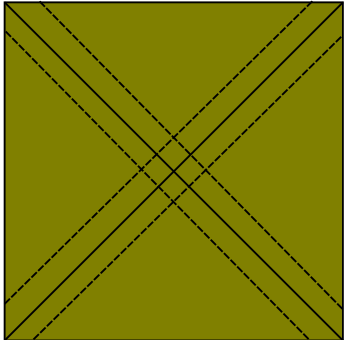
## Block Assembly:

### Assemble the Bear Paw Block:

- ✂ You will need to make 16 half-square triangles (thorns) for each block. We will use the 8-at-a-time HST unit method. Place 1 square C and 1 square D with right sides together. Draw a diagonal pencil line from corner to corner in both directions.

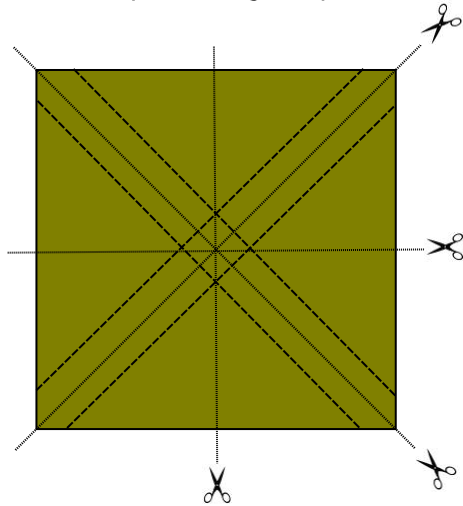


- ✂ Stitch 1/4" on each side of the drawn line.

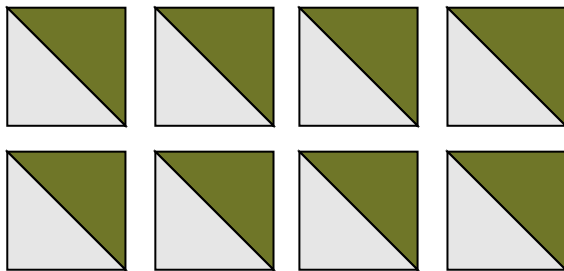




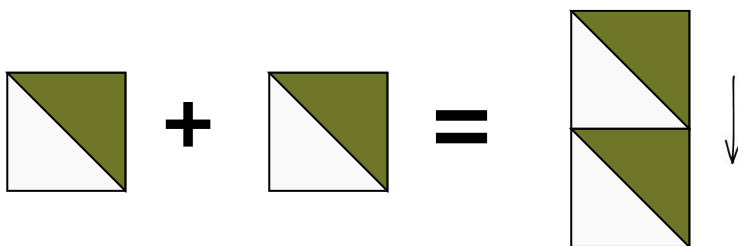
- ✂ Draw a cross with your pencil from top to bottom and side to side. Cut the squares in both directions. Cut the squares diagonally corner to corner on your drawn lines.



- ✂ Press seams to one side and TRIM each HST to 2 ¼" X 2 ¼". This makes 8 HST units.

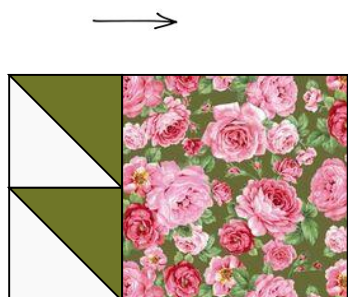


- ✂ Make one more set of 8-at-a time HST units for a total of 16 HST units for one completed block.
- ✂ Next, sew 2 HSTs together as shown and press. Make 4.

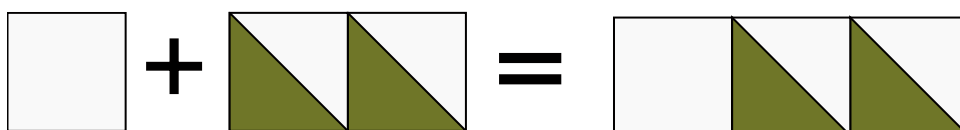




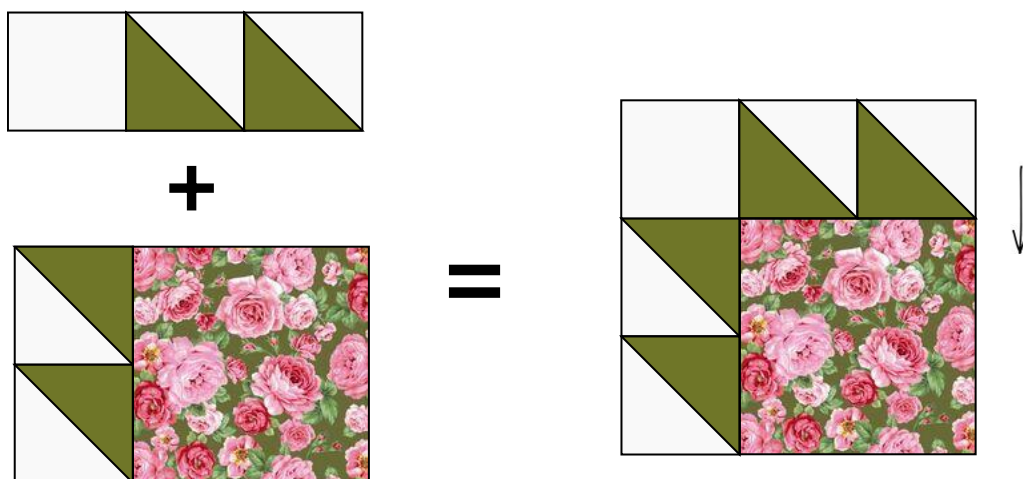
✂ Sew a HST unit to one side of an A square. Press seams towards the square. Make 4. Set aside.



✂ Sew an E square and 2 more HST units together as shown. Press the seams towards the E square. Make 4.



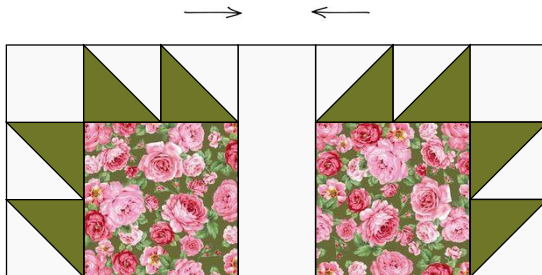
✂ Sew 1 A-HST unit (from the previous set aside group) to 1 E - HST unit. Press towards the A unit. Make 4.





— — X — — X — — X — — X — — X — — X — —

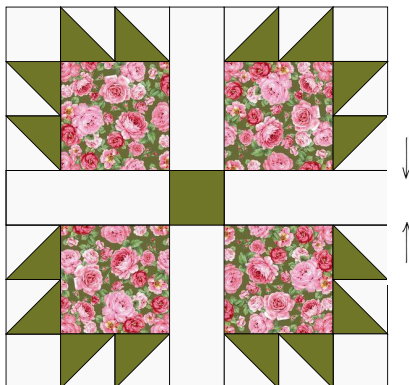
✂ Sew 2 A-units with an F background rectangle between them as shown. Make 2.



✂ Sew an F rectangle on opposite sides of an E square. Press towards the F rectangles.



✂ Sew the A-F units to either side of the E-F unit. Press towards the E-F unit.



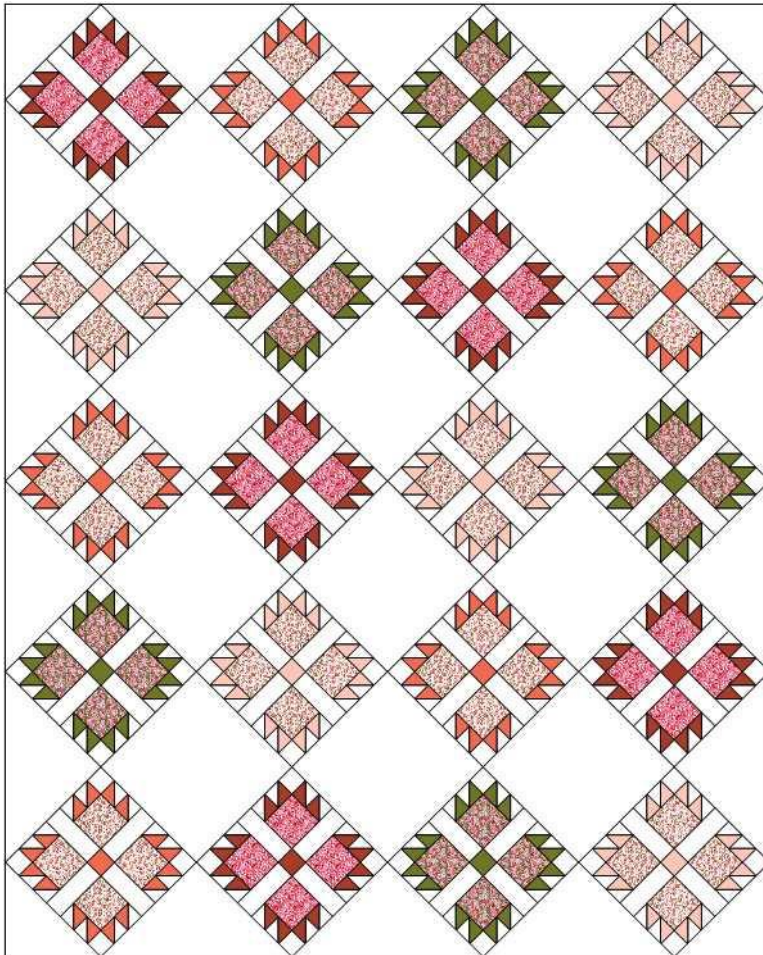
✂ Referring to the cover image for block and color placement, make 20 Bear Paw blocks in total.

— — X — — X — — X — — X — — X — — X — —

— — X — — X — — X — — X — — X — — X — —

## Quilt Assembly:

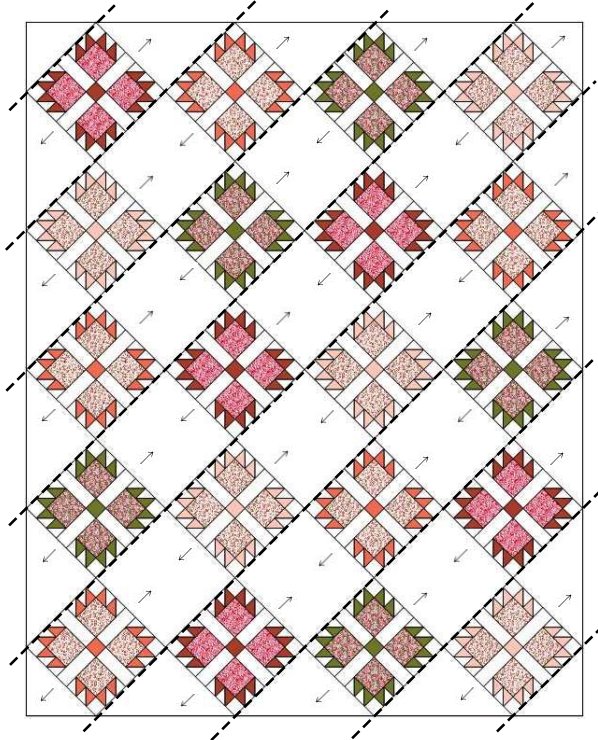
- ✂ Layout and arrange the Bear Paw blocks (turned on point) using the layout diagram below. Space the 12 square Setting Blocks (12 ½" X 12 ½") in between each Bear Paw block. Fill in the sides and top with the Side Setting Block triangles. Lay out the Corner Setting Block triangles in the 4 corners.



— — X — — X — — X — — X — — X — — X — —

— — X — — X — — X — — X — — X — — X — —

✂ Sew the diagonal rows together. Press each seam towards the setting blocks.



✂ Sew all the diagonal rows together. Press all the seams in the same direction.

✂ You're quilt top is complete!!!

✂ Layer your backing, batting and quilt top. Quilt as desired. Bind the edges with your favorite binding method.

— — X — — X — — X — — X — — X — — X — —

— — X — — X — — X — — X — — X — — X — —

©2020 Jennifer Long, Bee Sew Inspired

Free Pattern for Paintbrush Studio

Fabric is Spring Bouquet for Paintbrush Studio Fabrics

If you have any pattern questions please email me at [beesewinspired@yahoo.com](mailto:beesewinspired@yahoo.com).

<https://instagram.com/beesewinspired>

<https://facebook.com/beesewinspired>

---

— — X — — X — — X — — X — — X — — X — —

Paintbrush Studio  
Bee Sew Inspired