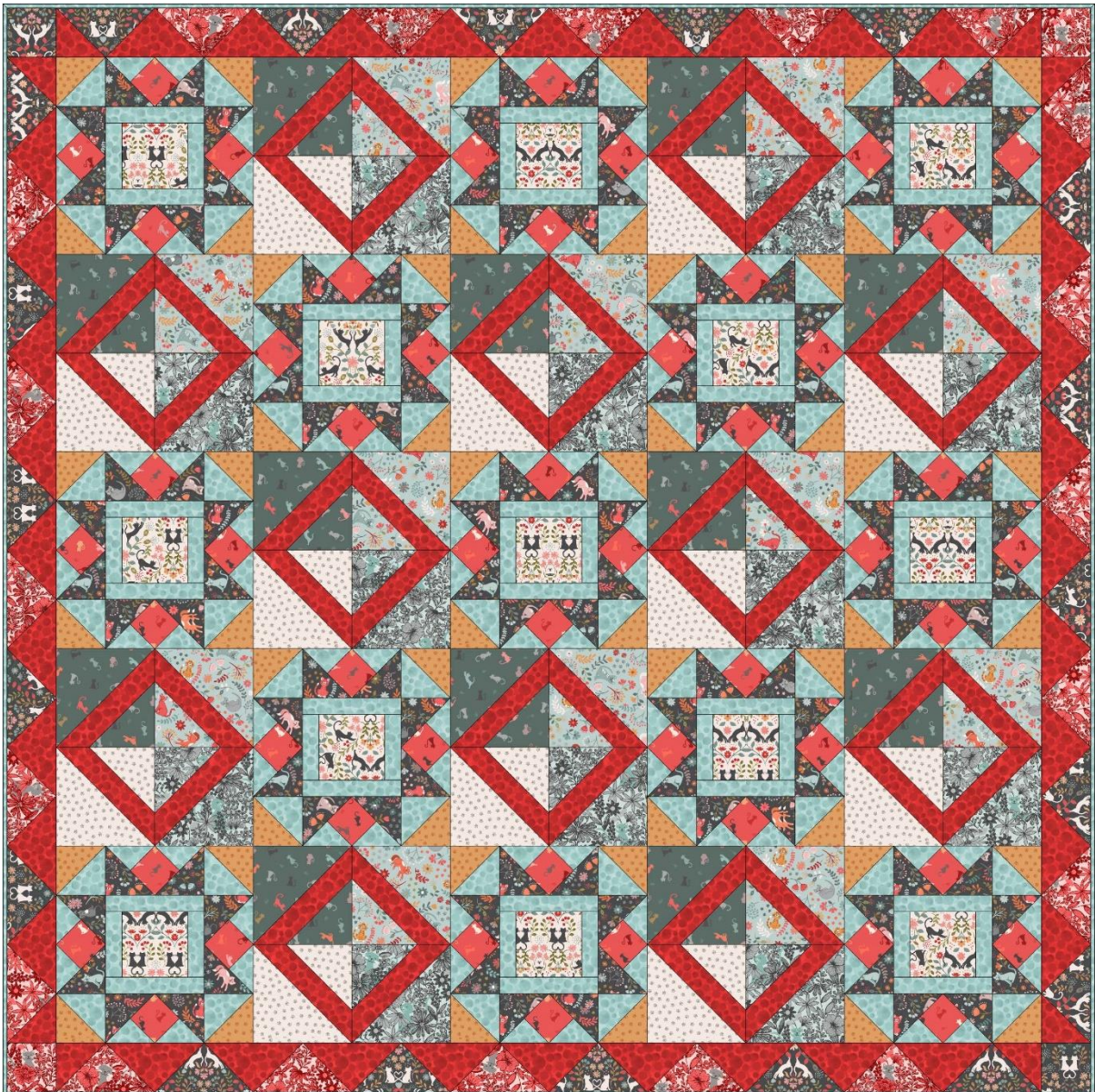




Designed and made by Sally Ablett – Quilt 1



Main diagram

Size 66" x 66" - unfinished block size 12½" x 12½"

Requirements

Fabrics from the Purrfect Petals collection:

1. A468.1 - Love cats on cream - fat¼
2. A471.3 - Floral cats on charcoal - ¾yd
3. A472.2 - Cat and mouse on soft red - ¾yd
4. A469.2 - Paws on amber - ¾yd
5. A472.3 - Cat and mouse on dark teal - ½yd
6. A471.2 - Floral cats on light blue - ½yd
7. A470.3 - Purrfect petals blue - ½yd
8. A469.1 - Paws on warm cream - ½yd
9. A468.3 - Love cats on charcoal - ½yd
10. A470.2 - Purrfect petals red - ½yd
11. BB226 - Dark Duck Egg - 1¼yds
12. BB237 - Lipstick Red - 1¾yd

Wadding and backing 70" x 70"

All measurements include ¼" seam allowances; press each seam as you go.

Cutting

From fabric 1 cut

13 x 4½" x 4½" (for block 1)

From fabric 2 cut

52 x 3⅞" x 3⅞" cut in half diagonally once (for block 1)

From fabric 3 cut

52 x 2⅝" x 2⅝" (for block 1)

From fabric 4 cut

26 x 3⅞" x 3⅞" cut in half diagonally once (for block 1)

From each of the fabrics 5, 6, 7 and 8 you need to cut

6 x 6⅞" x 6⅞" cut in half diagonally once (for block 2)

From fabric 9 cut

5 x 7¼" x 7¼" cut in half diagonally twice (for border)

2 x 3½" x 3½" (corners)

From fabric 10 cut

5 x 7¼" x 7¼" cut in half diagonally twice (for border)

2 x 3½" x 3½" (corners)

From fabric 11 cut

26 x 4¼" x 4¼" cut in half diagonally twice (for block 1)

26 x 3⅞" x 3⅞" cut in half diagonally once (for block 1)

26 x 1½" x 4½" (for block 1, sides)

26 x 1½" x 6½" (for block 1, top & bottom)

From fabric 12 cut

9 x 7¼" x 7¼" cut in half diagonally twice (for border)

4 x 3⅞" x 3⅞" cut in half diagonally once (for border)

48 x 1⅞" x 9¾" cut a 45° angle from each corner (for block 2)



cut 45° angles from left right and right corners

Making up the blocks



Block 1: Lay out the fabric pieces for the block.

Sew the strips to each side of the centre square and then the top and bottom strips. Next stitch the triangles together to make the square for each of the corners. Now sew a small triangle to each side of the square and then the last two triangles to this. You will sew in rows and then the rows together to complete the block. Stitch 13 blocks in total.



Block 2: Lay out the fabric pieces for the block.

This block will be made up of four squares. Large triangle, strip and then a small triangle. When all four are stitch you will then sew them in rows and then sew the rows together to complete the block. Stitch 12 blocks in total.

Complete the centre of the quilt.

Lay out the blocks as in the main diagram. Stitch the rows together and then the rows together to complete the quilt centre.



Two rows of the quilt.

Press the seam in the opposite way on each row to help when sewing the rows together.

Border



Lay out all the pieces for the border as in the main diagram. Sew the triangles together and on the of the strips add a square to each end.

Stitch your two strips without the squares to the quilt centre and then the last two with the squares each end.

Quilting

Sandwich quilt top, wadding and backing together. Quilt by hand or machine as desired. Trim the backing and wadding to the size of the quilt top.

Binding

Use your favourite method from fabric 12 to bind the quilt.

Sally Ablett 2020 ©



Designed and made by Sally Ablett – Quilt 2



Main Diagram

Size 66" x 66" - unfinished block size 12½" x 12½"

Requirements

Fabrics from the Purrfect Petals collection:

1. A468.2 - Love cats on mid grey - fat¼
2. A471.1 - Floral cats on warm cream - ¾yd
3. A472.3 - Cat and mouse on dark teal - ¾yd
4. A469.1 - Paws on warm cream - ¾yd
5. A472.1 - Floral cats on light blue - ½yd
6. A471.3 - Floral cats on charcoal - ½yd
7. A470.1 - Purrfect petals amber - ½yd
8. A469.3 - Paws on duck egg - ½yd
9. A468.1 - Love cats on cream - ½yd
10. A470.3 - Purrfect petals blue - ½yd
11. BB234 - Fox Red - 1¼yds
12. BB230 - Smokey Blue - 1¾yd

Wadding and backing 70" x 70"

All measurements include ¼" seam allowances; press each seam as you go.

Cutting

From fabric 1 cut

13 x 4½" x 4½" (for block 1)

From fabric 2 cut

52 x 3⅞" x 3⅞" cut in half diagonally once (for block 1)

From fabric 3 cut

52 x 2⅝" x 2⅝" (for block 1)

From fabric 4 cut

26 x 3⅞" x 3⅞" cut in half diagonally once (for block 1)

From each of the fabrics 5, 6, 7 and 8 you need to cut

6 x 6⅞" x 6⅞" cut in half diagonally once (for block 2)

From fabric 9 cut

5 x 7¼" x 7¼" cut in half diagonally twice (for border)

2 x 3½" x 3½" (corners)

From fabric 10 cut

5 x 7¼" x 7¼" cut in half diagonally twice (for border)

2 x 3½" x 3½" (corners)

From fabric 11 cut

26 x 4¼" x 4¼" cut in half diagonally twice (for block 1)

26 x 3⅞" x 3⅞" cut in half diagonally once (for block 1)

26 x 1½" x 4½" (for block 1, sides)

26 x 1½" x 6½" (for block 1, top & bottom)

From fabric 12 cut

9 x 7¼" x 7¼" cut in half diagonally twice (for border)

4 x 3⅞" x 3⅞" cut in half diagonally once (for border)

48 x 1⅞" x 9¾" cut a 45° angle from each corner (for block 2)



cut 45° angles from left right and right corners

Making up the blocks



Block 1: Lay out the fabric pieces for the block.

Sew the strips to each side of the centre square and then the top and bottom strips. Next stitch the triangles together to make the square for each of the corners. Now sew a small triangle to each side of the square and then the last two triangles to this. You will sew in rows and then the rows together to complete the block. Stitch 13 blocks in total.



Block 2: Lay out the fabric pieces for the block.

This block will be made up of four squares. Large triangle, strip and then a small triangle. When all four are stitch you will then sew them in rows and then sew the rows together to complete the block. Stitch 12 blocks in total.

Complete the centre of the quilt.

Lay out the blocks as in the main diagram. Stitch the rows together and then the rows together to complete the quilt centre.



Two rows of the quilt.

Press the seam in the opposite way on each row to help when sewing the rows together.

Border



Lay out all the pieces for the border as in the main diagram. Sew the triangles together and on the of the strips add a square to each end.

Stitch your two strips without the squares to the quilt centre and then the last two with the squares each end.

Quilting

Sandwich quilt top, wadding and backing together. Quilt by hand or machine as desired. Trim the backing and wadding to the size of the quilt top.

Binding

Use your favourite method from fabric 12 to bind the quilt.

Sally Ablett 2020 ©