

Harmony Jacket



Harmony Jacket

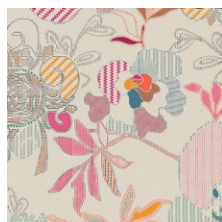
QUILT DESIGNED BY PAT BRAVO

LEGENDARY

FABRICS DESIGNED BY PAT BRAVO



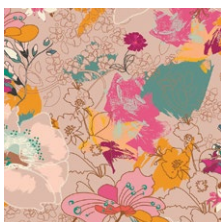
BOHO SOUL



LGD-49700
STITCHED ANTHOMANIA BOHO



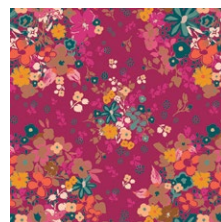
LGD-49701
MARQUETERIE BOHO



LGD-49702
WONDERLUST BOHO



LGD-49703
BRIT BOUTIQUE BOHO



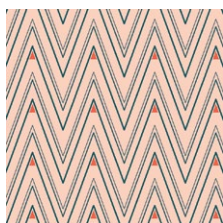
LGD-49704
FEMME METALE BOHO



LGD-49705
MEADOW BOHO



LGD-49706
COLLAR ENDS BOHO



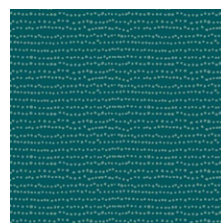
LGD-49707
COLLAR ENDS SOUL



LGD-49708
TRINKETS BOHO



LGD-49709
TRINKETS SOUL

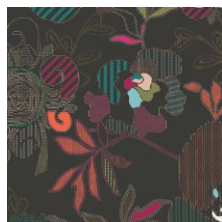


LGD-49710
FLECKS BOHO



LGD-49711
FLECKS SOUL

BOLD DREAMS



LGD-39700
STITCHED ANTHOMANIA BOLD



LGD-39701
MARQUETERIE BOLD



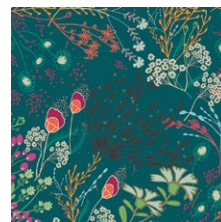
LGD-39702
WONDERLUST BOLD



LGD-39703
BRIT BOUTIQUE BOLD



LGD-39704
FEMME METALE BOLD



LGD-39705
MEADOW BOLD



LGD-39706
COLLAR ENDS BOLD



LGD-39707
COLLAR ENDS DREAMS



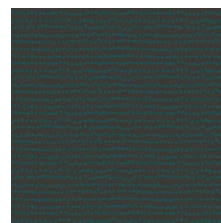
LGD-39708
TRINKETS BOLD



LGD-39709
TRINKETS DREAMS



LGD-39710
FLECKS BOLD



LGD-39711
FLECKS DREAMS



FEEL THE DIFFERENCE © 2018 Courtesy of Art Gallery Quilts LLC. All Rights Reserved.

Harmony Jacket

FABRIC REQUIREMENTS

Fabric A	LGD-49704	½ Yd.
Fabric B	LGD-49703	⅙ yd.
Fabric C	LGD-49709	1/6 Yd
Fabric D	LGD-39709	1/6 Yd
Fabric E	LGD-49710	1/6 Yd
Fabric F	LGD-39711	½Yd
Fabric G	LGD-49706	⅙Yd
Fabric H	LGD-39704	⅙ Yd
Fabric I	LGD-39705	⅙ Yd
Fabric J	LGD-49702	½ Yd
Fabric K	LGD-49711	⅙Yd
Fabric L	LGD-49700	⅙Yd
Fabric M	LGD-39700	2 Yd
Fabric N	FE-539	1/6 Yd
Fabric O	FE-536	⅙ Yd
Fabric P	FE-522	¾Yd
Fabric Q	DEN-S- 2001	¼ Yd

CUTTING DIRECTIONS

*¼" seam allowances are included.
WOF means width of fabric.*

Fabric A:

- Cut Sixteen (16) squares of 2 ½ x 2 ½
- Cut Four (4) squares of 2 7/8 x 2 7/8
- Cut One (1) Square of 12 ½" x 12 ½"

Fabric B:

- Cut Ten (10) squares of 2 ½ x 2 ½
- Cut Two (2) squares of 2 7/8 x 2 7/8

Fabric C:

- Cut Fourteen (14) squares of 2 ½ x 2 ½
- Cut Two (2) squares of 2 7/8 x 2 7/8.

Fabric D:

- Cut Fourteen (14) squares of 2 ½ x 2 ½
- Cut Two (2) squares of 2 7/8 x 2 7/8.

Fabric E:

- Cut Six (6) squares of 2 ½ x 2 ½
- Cut Two (2) squares of 2 7/8 x 2 7/8

Fabric F:

- Cut Forty Eight (48) squares of 2 ½ x 2 ½
- Cut Sixteen (16) squares of 2 7/8 x 2 7/8

Fabric G:

- Cut Two (2) squares of 2 ½ x 2 ½
- Cut Two (2) squares of 2 7/8 x 2 7/8.

Fabric H

- Cut Two (2) squares of 2 7/8 x 2 7/8

Fabric I

- Cut Two (2) Stripes of 12 ½ " x 2"

Fabric J

- Cut Two (2) Stripes of 12 ½ " x 2"
- Cut One (1) Rectangle of 20" x 15"

Fabric K

- Cut three (3) Stripes of 12 ½ " x 2"

Fabric L

- Cut three (3) Stripes of 12 ½ " x 2"

Fabric M

- Cut Two (2) Rectangle of 27 ½" x 12 ½"
- Cut Two (2) Rectangle of 29 ½" x 12 ½"
- Cut One (1) Rectangle of 20" x 15"
- Cut One (1) Rectangle of 30" x 13"

Fabric N

- Cut (4) Stripes of 12 ½ " x 2"

Fabric O

- Cut three (3) Stripes of 12 ½ " x 2"

Fabric P

- Cut Two (2) Square of 12 ½" x 12 ½"
- Cut One (1) Rectangle of 30" x 13"

Fabric Q

- Cut Two (2) Square of 8" x 9 ½"

Note:

This Jacket was created base on a pattern by Named, the pattern is called Harriet Lumberjacket each piece of the pattern has a different fabric and some of them are piece together and quilted.. You can find the Link to download the pattern in the lookbook.

ASSEMBLING THE JACKET

- For the right sleeve sew stripes of $12\frac{1}{2}$ x 2" in th order shown above.
- Quilt as desire and place pattern on top of the block and cut.

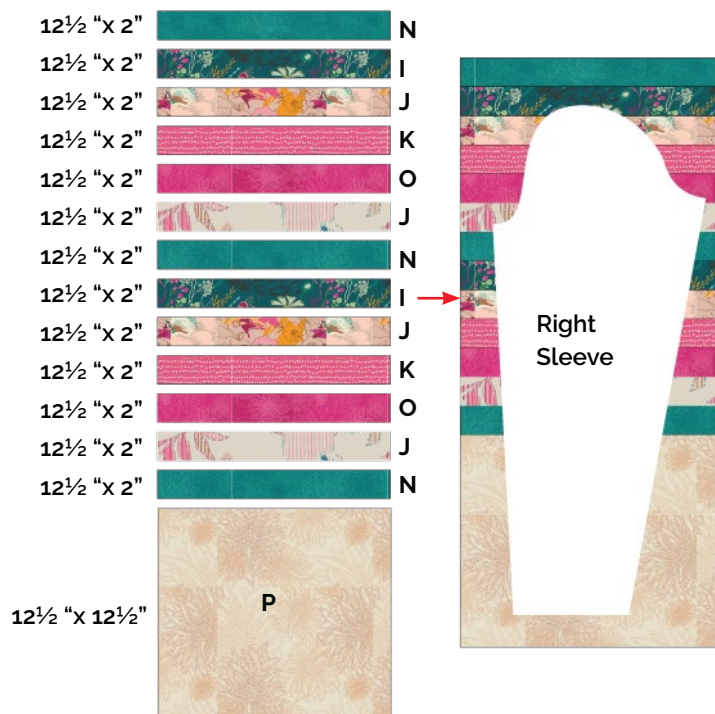


DIAGRAM 1

- For the left sleeve sew stripes of $12\frac{1}{2}$ x 2" and squares in the order shown in diagram above.
- Quilt as desire and place pattern on top of the block and cut.

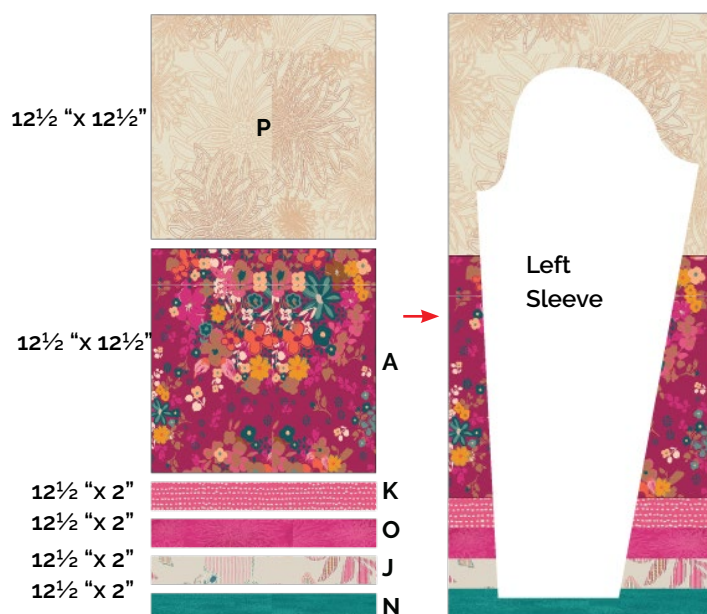


DIAGRAM 2

- For the under sleeve, use the two (2) rectangle of $27\frac{1}{2}$ x $12\frac{1}{2}$ of fabric M.
- Place pattern on top of fabric and cut 2



DIAGRAM 3

- For the back sides use the $29\frac{1}{2}$ x $12\frac{1}{2}$ rectangles from fabric M and cut 2 times



DIAGRAM 4

- For the Front Right Piece Grab the two rectangles of 20" x 15" from fabric M and J, sew them together as shown on diagram below.
- Place the front Right Side Pattern and cut one time

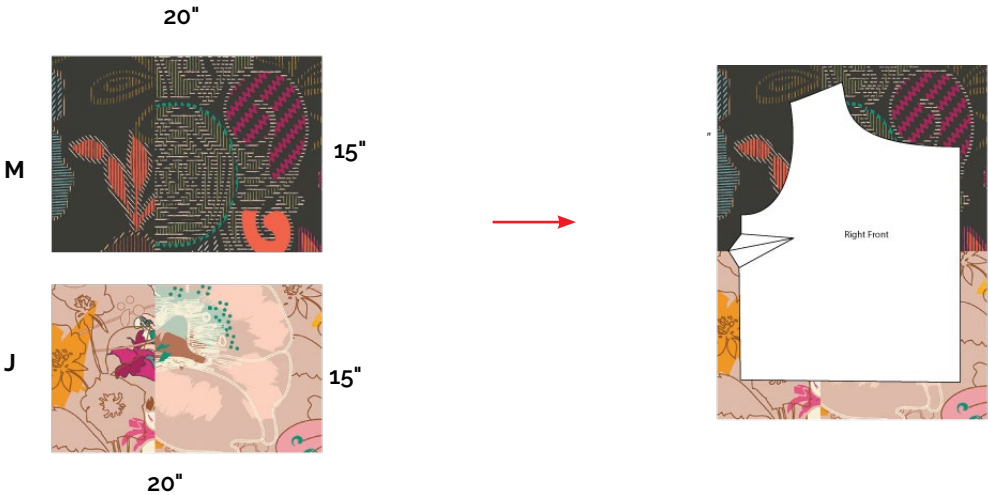


DIAGRAM 5

- For Center Front Left, use the 13" x 30" from Fabric M. Place pattern on top of the fabric and cut

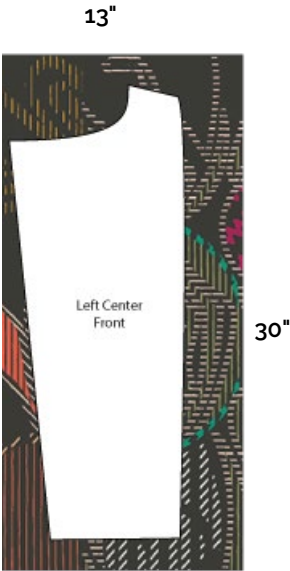


DIAGRAM 6

- For Front Left Side, use the 11" x 30" rectangle from fabric P, Place the pattern on top of fabric and cut

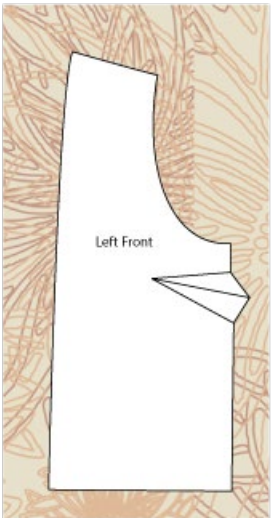


DIAGRAM 7

- For the Design on the Center Back We designed a Fun Block. Which is made of HST (Half Square Triangles) and Squares.
- We will need seven (7) Different HST combinations and squares of $2\frac{1}{2}$ ". See diagram below.

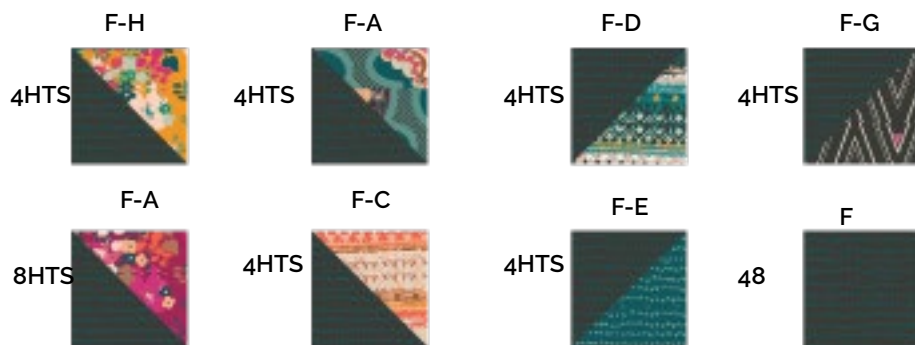


DIAGRAM 8

- Now follow below diagram for HST arrangement. (We will be making this block twice)
- The block has 8 rows, start sewing by rows

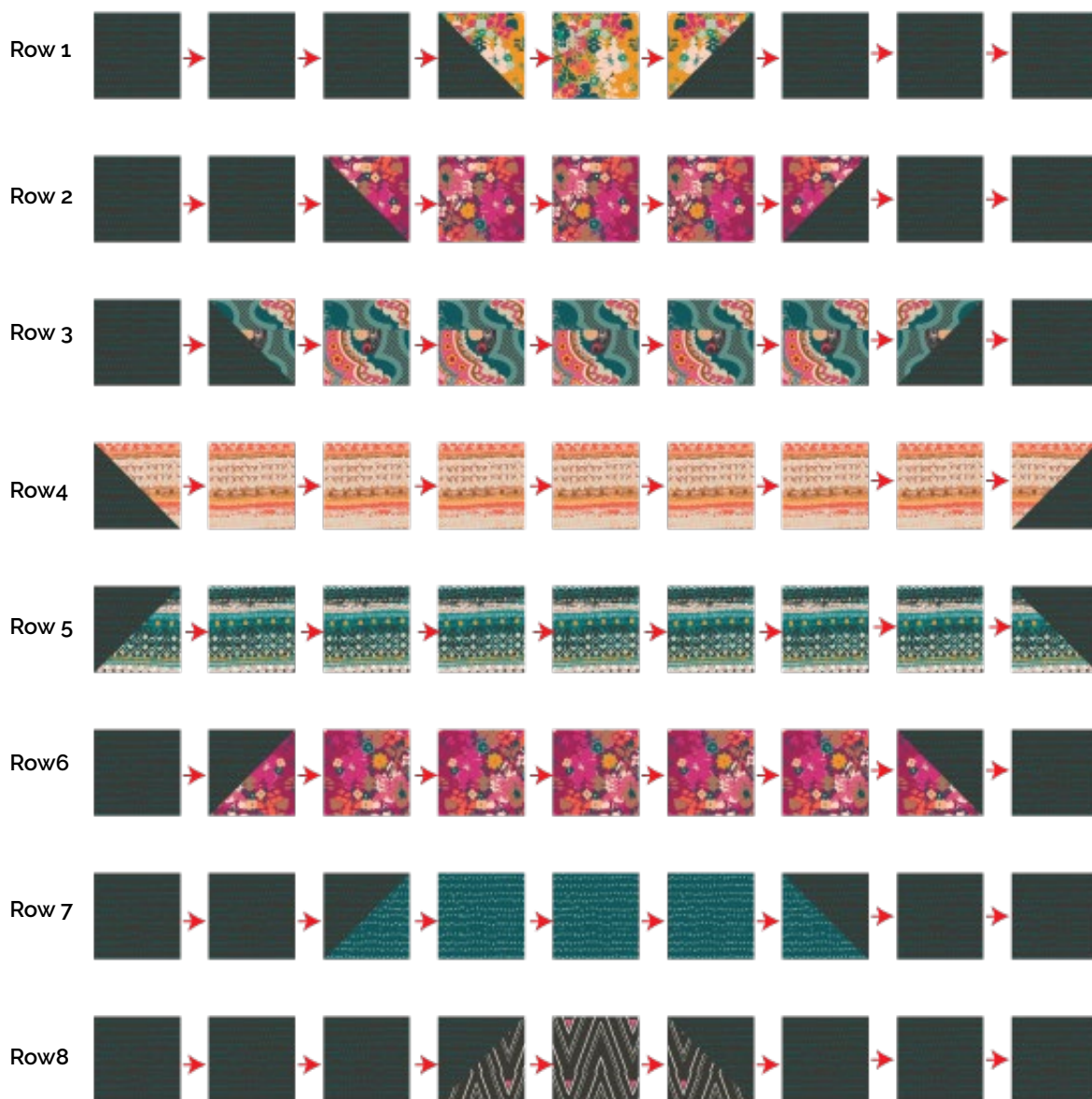


DIAGRAM 9

- Now let's sew all rows as shown on diagram below, remember that you have to make two of these blocks.

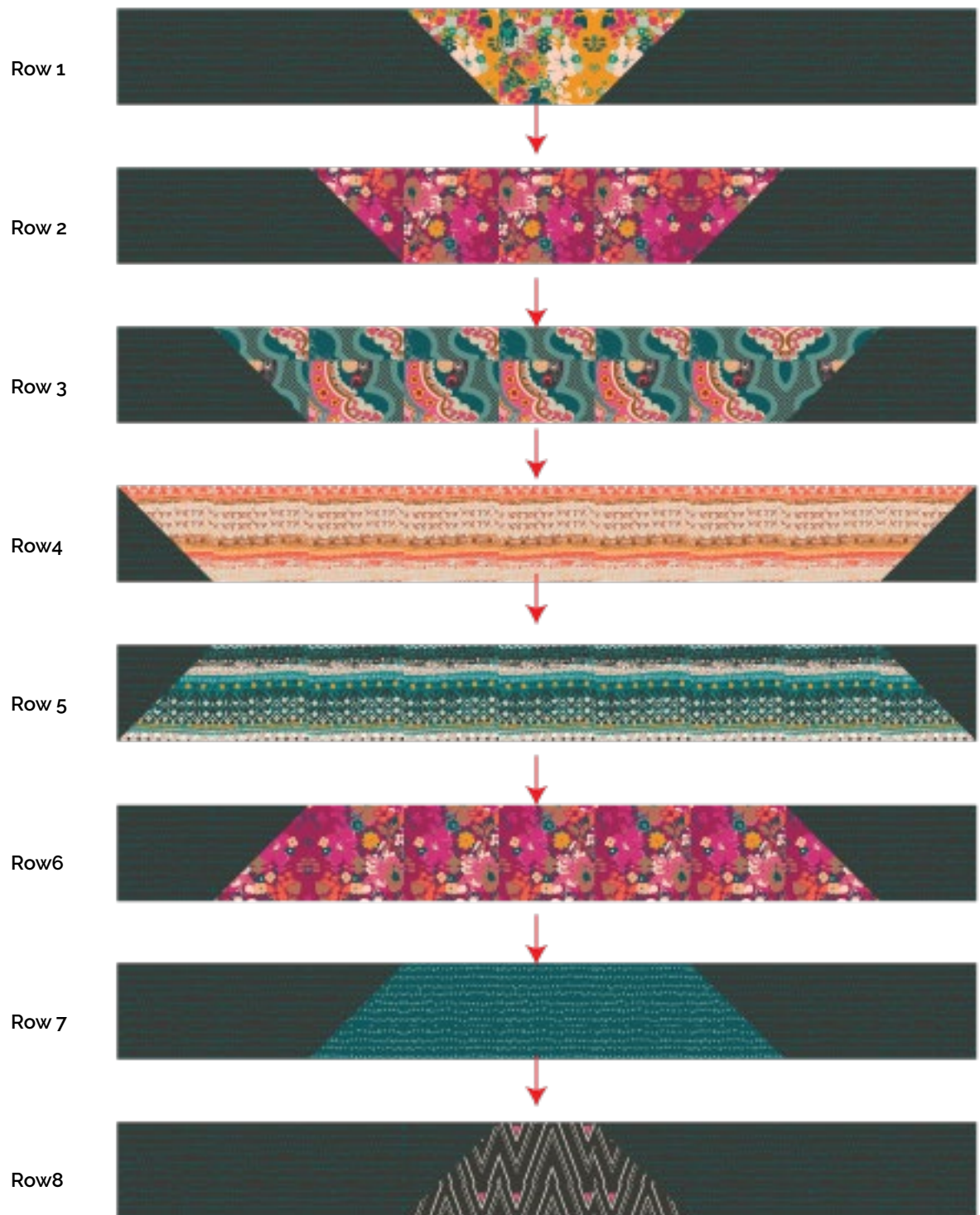
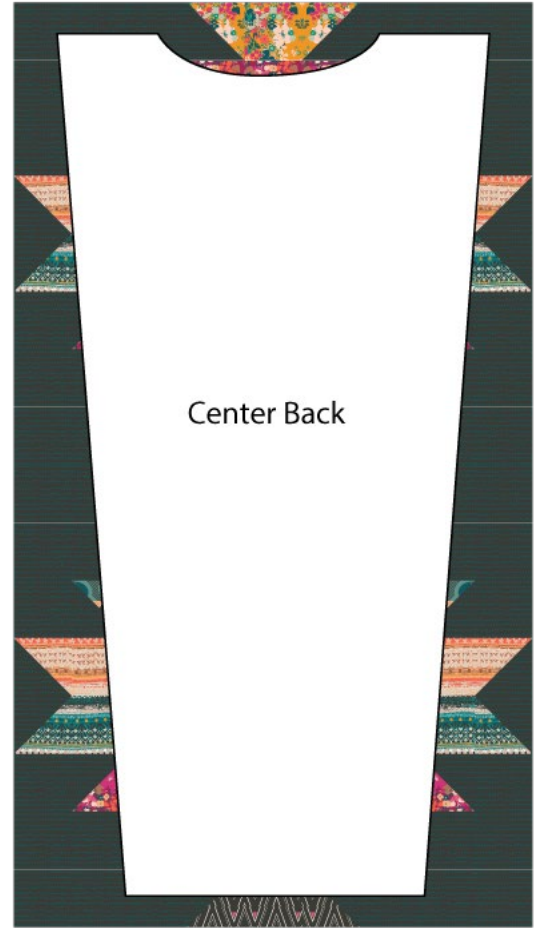
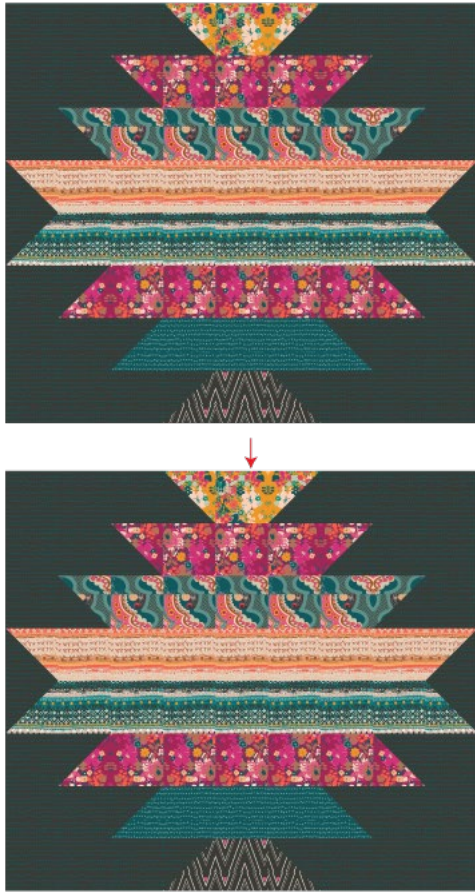


DIAGRAM 10

- After you finish the two blocks, sew them together.
- Place pattern on top and cut.



- In this case we use Sherpa for lining, you are free to use any lining you want.
- Follow instructions on the link provided in the look book for construction Instruction.



artgalleryfabrics.com

NOTE: While all possible care has been taken to ensure the accuracy of this pattern, We are not responsible for printing errors or the way in which individual work varies. Please read instructions carefully before starting the construction of this quilt. If desired, wash and iron your fabrics before starting to cut.

© 2018 Courtesy of Art Gallery Quilts LLC. All Rights Reserved.