


FALL JOURNEYS QUILT

Riley Blake
DESIGNS®



73" x 73"

 = Confident Beginner



07/01/2025

FALL JOURNEYS QUILT

FINISHED QUILT SIZE 73" x 73"

Please read all instructions before beginning this project.
Yardage calculated using a 42" usable width of fabric.

Pattern designed by Tara Reed.

GENERAL INSTRUCTIONS

Please check www.rileyblakedesigns.com/pattern-updates or scan the QR Code for any revisions before starting this project. This pattern requires a basic knowledge of quilting techniques and terminology. The quilt and block diagrams portrayed are virtual images. The layout and look of your project may differ when using actual fabric. It is not recommended to prewash fabric before cutting and assembling.



Always verify your panel size before beginning. If your panel measurements differ from those given in the pattern, trim to the desired size or use coping strips to alter the size of your panel. If coping strips are needed, add oversized, coordinating strips of fabric to the necessary edges of the panel, then trim to the size specified in the pattern.

WOF = Width of Fabric
RST = Right Sides Together
SNF = Stitch and Flip
SNF-FG = Stitch and Flip Flying Geese
HST = Half Square Triangle

FABRIC REQUIREMENTS

All fabrics from the Covered Bridges in Fall collection unless stated otherwise.

(1) PD16217-PANEL Fall Adventure Awaits Pillow Panel

$\frac{1}{3}$ Yard Each:

CD16210-CREAM Main

C16212-CREAM Toile

C16213-ORANGE Block Toss

$\frac{1}{2}$ Yard Each:

C16213-CREAM Block Toss

CD16215-MULTI Leaves

Additional Fabrics:

$\frac{5}{8}$ yard CD16211-GOLD Leaf Toss

$\frac{3}{4}$ yard CD16210-SAGE Main

1 $\frac{1}{2}$ yards C16212-RED Toile

1 $\frac{5}{8}$ yards C16214-TAN Acorn Ditsy (includes binding)

OTHER SUPPLIES

Basic Sewing Supplies

2 $\frac{1}{4}$ yards WB605-BARNRED Shabby (wide back backing)

Batting

CUTTING INSTRUCTIONS

When cutting fabrics, use a straight edge ruler and rotary cutter. Measurements include $\frac{1}{4}$ " seam allowance. Label, allocate, and organize all cuts as noted.



Fall Adventure Awaits Pillow Panel

Fussy cut (4) 16 $\frac{1}{2}$ " x 16 $\frac{1}{2}$ " Panel squares, centered over the motifs.*

**Note: If the panel motifs do not reach the edge of the required cuts, add coping strips first and then trim to the required sizes.*



Cream Main

Fussy cut (1) 6 $\frac{1}{2}$ " x 6 $\frac{1}{2}$ " square, centered over a motif. Label as A.

Fussy cut (4) 5" x 5" squares, centered over the motifs. Label as B.



Cream Toile

Cut (4) 2 $\frac{3}{4}$ " x WOF strips; subcut:

(16) 2 $\frac{3}{4}$ " x 5" rectangles. Label as C.

(16) 2 $\frac{3}{4}$ " x 2 $\frac{3}{4}$ " squares. Label as D.



Orange Block Toss

Cut (1) 3 $\frac{1}{2}$ " x WOF strip; subcut:

(8) 3 $\frac{1}{2}$ " x 3 $\frac{1}{2}$ " squares. Label as E.

(5) 2 $\frac{3}{4}$ " x 2 $\frac{3}{4}$ " squares. Label as F.

Cut (2) 2 $\frac{3}{4}$ " x WOF strips; subcut:

(27) 2 $\frac{3}{4}$ " x 2 $\frac{3}{4}$ " squares. Label as F.

FALL JOURNEYS QUILT



Cream Block Toss

Cut (1) 5" × WOF strip; subcut:
 (8) 5" × 5" squares. Label as G.
 Cut (1) 4 ½" × WOF strip; subcut:
 (4) 4 ½" × 4 ½" squares. Label as H.
 Cut (1) 3 ¾" × WOF strip; subcut:
 (8) 3 ¾" × 3 ¾" squares. Label as I.
 Cut (1) 3 ½" × WOF strip; subcut:
 (4) 3 ½" × 6 ½" rectangles. Label as J.
 (4) 3 ½" × 3 ½" squares. Label as K.



Multi Leaves

Cut (1) 5" × WOF strip; subcut:
 (8) 5" × 5" squares. Label as L.
 Cut (2) 4 ½" × WOF strips; subcut:
 (16) 4 ½" × 4 ½" squares. Label as M.



Gold Leaf Toss

Cut (2) 9 ½" × WOF strips; subcut:
 (4) 9 ½" × 16 ½" rectangles. Label as N.



Sage Main*

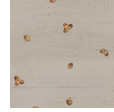
Cut (1) 16 ½" × WOF strip; subcut:
 (2) 9 ½" × 16 ½" rectangles. Label as O.
 Cut (1) 9 ½" × WOF strip; subcut:
 (2) 16 ½" × 9 ½" rectangles. Label as P.

*Please note this is a directional print. Cutting for this print is listed width × height.



Red Toile

Cut (1) 5" × WOF strip; subcut:
 (8) 5" × 5" squares. Label as Q.
 Cut (2) 4 ½" × WOF strips; subcut:
 (16) 4 ½" × 4 ½" squares. Label as R.
 Cut (14) 2" × WOF strips. Piece (10) together end-to-end; subcut:
 (2) 2" × 68 ½" strips. Label as S.
 (4) 2" × 65 ½" strips. Label as T.
 From remaining strips, subcut:
 (4) 2" × 25 ½" rectangles. Label as U.
 (2) 2" × 12 ½" rectangles. Label as V.
 Cut (2) 1 ½" × WOF strips; subcut:
 (4) 1 ½" × 12 ½" rectangles. Label as W.



Tan Acorn Ditsy

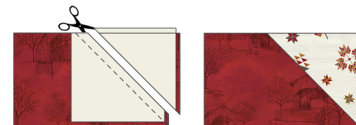
Cut (1) 5" × WOF strip; subcut:
 (8) 5" × 5" squares. Label as X.
 Cut (1) 4 ½" × WOF strip; subcut:
 (4) 4 ½" × 4 ½" squares. Label as Y.
 Cut (1) 3 ¾" × WOF strip; subcut:
 (8) 3 ¾" × 3 ¾" squares. Label as Z.
 Cut (7) 2 ¾" × WOF strips. Piece together end-to-end; subcut:
 (2) 2 ¾" × 73" strips. Label as AA.
 (2) 2 ¾" × 68 ½" strips. Label as BB.
 Cut (8) 2 ½" × WOF strips for binding.

SEWING TECHNIQUES

Sew all seams RST and with a ¼" seam allowance unless stated otherwise. Refer to the Quilt Layout Diagram for placement of the prints. Press seams as desired unless stated otherwise. Dimensions listed in steps are unfinished sizes. Please refer to the following general sewing techniques as these methods are referenced throughout the pattern in their abbreviated form.

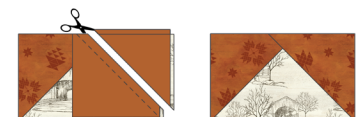
STITCH AND FLIP METHOD (SNF)

Place (2) pieces RST, matching raw edges in the corner to be replaced. Draw a diagonal line on the wrong side of the smaller piece across the corner. Sew on the drawn line. Trim the seam allowance outside the sewn line to ¼". Flip the smaller piece away from the larger piece and press, replacing the corner. The size of the larger, original piece does not change.



STITCH AND FLIP FLYING GEESE METHOD (SNF-FG)

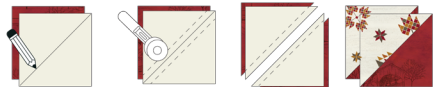
Draw a diagonal line, corner to corner, on the wrong side of (2) squares. Place (1) square in a corner of (1) rectangle, RST, matching raw edges in the corner to be replaced. Sew on the drawn line. Trim the seam allowance outside the sewn line to ¼". Flip the square away from the rectangle and press, replacing the corner. Repeat with the second square in the opposite corner. The size of the original rectangle does not change.



FALL JOURNEYS QUILT

2-AT-A-TIME HALF SQUARE TRIANGLE METHOD (HST)

Place (2) squares RST. Draw a diagonal line on the wrong side of (1) square. Sew $\frac{1}{4}$ " on each side of the drawn line. Cut on the drawn line to create (2) HSTs. Press toward the darker fabric. Trim HSTs to the indicated size.



BLOCK ASSEMBLY

1. Gather the required pieces and use the SNF-FG method to make the units shown below, referencing the diagram for quantity, proper placement, and orientation.



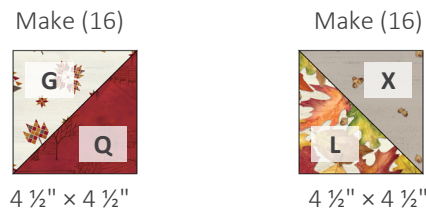
2. Arrange (4) **D**-squares, (4) C/F SNF-FG units, and (1) **B**-square as shown below. Sew the pieces and units together into rows. Next, sew the rows together to make (1) Small Star Unit. Repeat to make (4) total units.



3. Arrange (4) **K**-squares, (4) E/J SNF-FG units, and (1) **A**-square as shown below. Sew the pieces and units together into rows. Next, sew the rows together to make (1) Large Star Unit.



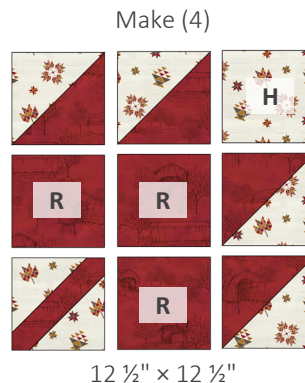
4. Gather the required pieces and use the 2-at-a-time HST method to make the units shown below, referencing the diagram for quantity, proper placement, and orientation. Trim each unit to the size indicated.



5. Gather the required pieces and use the SNF method to make the units shown below, referencing the diagram for quantity, proper placement, and orientation.



6. Arrange (4) G/Q HST units, (1) **H**-square, (3) **R**-squares, and (1) I/R SNF unit as shown below. Sew the pieces and units together into rows. Next, sew the rows together to make (1) Red Leaf Unit. Repeat to make (4) total units.



7. Arrange (1) **Y**-square, (4) L/X HST units, (3) **M**-squares, and (1) M/Z SNF unit as shown below. Sew the pieces and units together into rows. Next, sew the rows together to make (1) Multi Leaf Unit. Repeat to make (4) total units.



FALL JOURNEYS QUILT

QUILT ASSEMBLY

8. Arrange (1) Small Star Unit, (1) **P**-rectangle (or **O**-rectangle), (1) **N**-rectangle, and (1) Panel square as shown below. Sew the pieces and units together into pairs. Next, sew the pairs together to make (1) Segment 1. Repeat to make (3) additional segments, referencing the diagrams below for proper placement and orientation.

Segment 1



25 1/2" x 25 1/2"

Segment 2



25 1/2" x 25 1/2"

Segment 3



25 1/2" x 25 1/2"

Segment 4



25 1/2" x 25 1/2"

9. Arrange (1) Red Leaf Unit, (1) **W**-rectangle, and (1) Multi Leaf Unit as shown below. Sew the pieces and units together to make (1) Segment 5. Repeat to make (3) additional segments, referencing the diagrams below and to the right for proper placement and orientation.

Segment 5



12 1/2" x 25 1/2"

Segment 6



12 1/2" x 25 1/2"

Segment 7



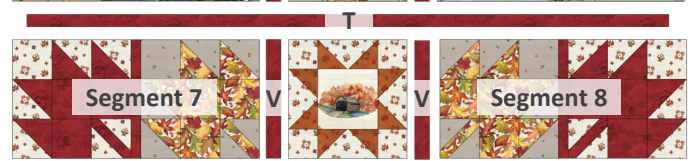
12 1/2" x 25 1/2"

Segment 8



12 1/2" x 25 1/2"

10. Arrange Segments 1-8, (4) **U**-rectangles, (2) **T**-strips, (2) **V**-rectangles, and (1) Large Star Unit as shown below. Sew the segments and pieces together into rows. Next, sew the rows together to make the quilt center.



65 1/2" x 65 1/2"

11. Sew (1) **T**-strip to each side of the quilt center as shown on page 6. Next, add (1) **S**-strip to the top and bottom.
12. Sew (1) **BB**-strip to each side of the quilt center as shown on page 6. Next, add (1) **AA**-strip to the top and bottom to complete the quilt top.

FALL JOURNEYS QUILT

QUILT LAYOUT DIAGRAM



73" x 73"

FINISHING INSTRUCTIONS

13. Layer the quilt top, batting, and backing. Baste the quilt layers together and quilt as desired. Sew the Tan Acorn Ditsy binding strips together end-to-end. Then bind the trimmed, finished quilt using your favorite binding method.

Enjoy and share your quilt using the hashtags: [#coveredbridgesinfallfabric](#), [#falljourneysquilt](#), [#rileyblakedesigns](#), and [#iloverileyblake](#).