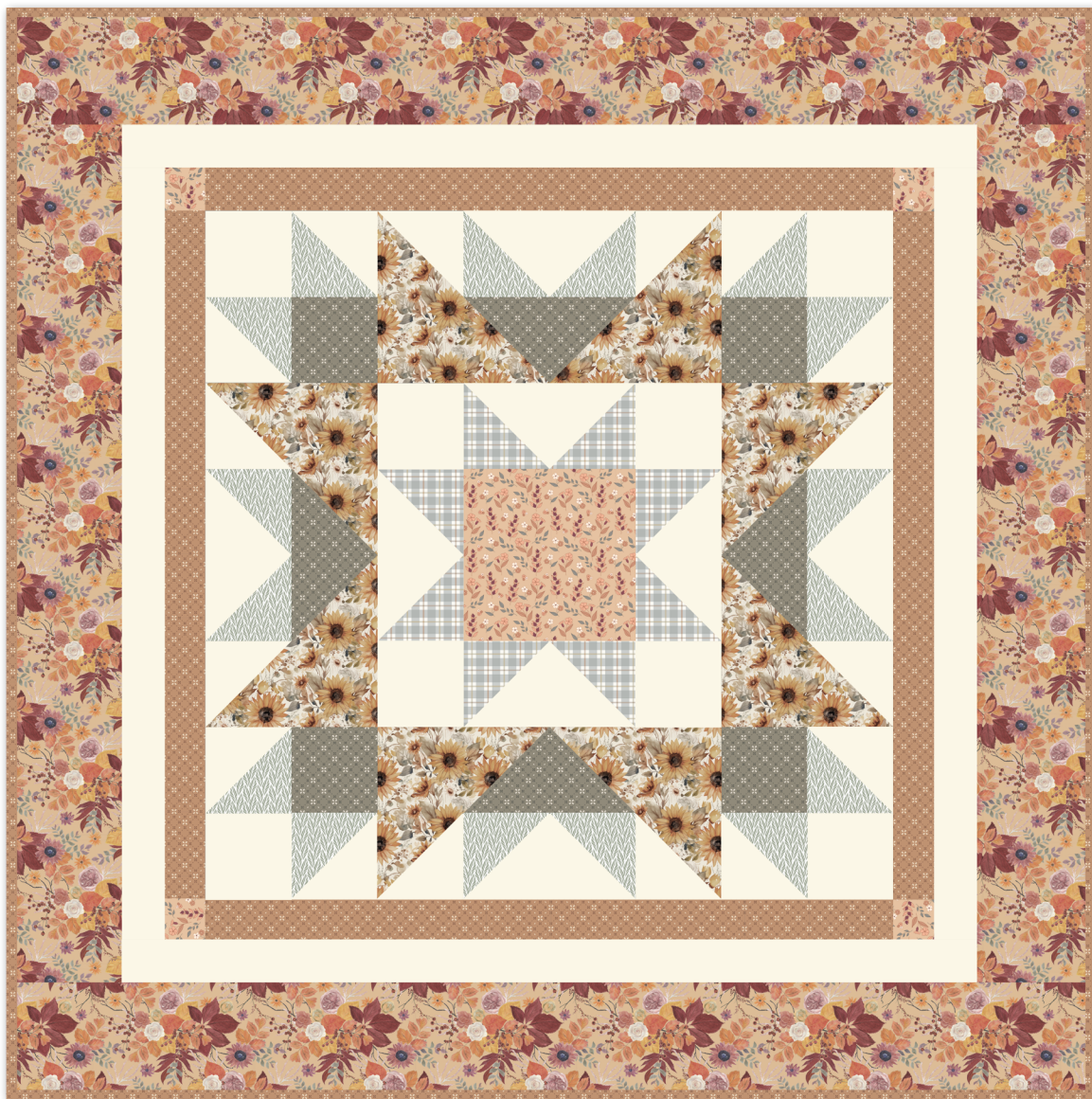


EVENING STAR TABLE TOPPER



50 1/2" x 50 1/2"



= Confident Beginner

EVENING STAR TABLE TOPPER

FINISHED TABLE TOPPER SIZE 50 ½" × 50 ½"

Please read all instructions before beginning this project.
Yardage calculated using a 42" usable width of fabric.
Pattern designed by The RBD Designers.

GENERAL INSTRUCTIONS

Please check www.rileyblakedesigns.com/pattern-updates or scan the QR Code for any revisions before starting this project. This pattern requires a basic knowledge of quilting techniques and terminology. The table topper and block diagrams portrayed are virtual images. The layout and look of your project may differ when using actual fabric. It is not recommended to prewash fabric before cutting and assembling.



WOF = Width of Fabric
RST = Right Sides Together
SNF-FG = Stitch and Flip Flying Geese
HST = Half Square Triangle

FABRIC REQUIREMENTS

All fabrics from the Evening on the Prairie collection unless stated otherwise.

⅓ Yard Each:

C16746-BEIGE Autumn Floral
C16749-GREEN Geo Floral
C16750-GREEN Geo Leaves

Additional Fabrics:

¼ yard C16744-STONE Picnic Plaid
½ yard CD16743-CREAM Watercolor Sunflowers
1 yard CD16740-BEIGE Main
1 yard C120-VINTAGEWHITE Confetti Cotton™ Solid
⅔ yard C16749-SIENNA Geo Floral (includes binding)

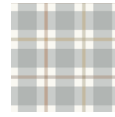


OTHER SUPPLIES

Basic Sewing Supplies
1 ¾ yards WB16751-CREAM Watercolor Sunflowers
(wide back backing)
Batting

CUTTING INSTRUCTIONS

When cutting fabrics, use a straight edge ruler and rotary cutter. Measurements include ¼" seam allowance. Label, allocate, and organize all cuts as noted.



Stone Picnic Plaid

Cut (1) 4 ½" × WOF strip. Subcut:
(8) 4 ½" × 4 ½" squares. Label as A.



Beige Autumn Floral

Cut (1) 8 ½" × WOF strip. Subcut:
(1) 8 ½" × 8 ½" square. Label as B.
(4) 2 ½" × 2 ½" squares. Label as C.



Green Geo Floral

Cut (2) 4 ½" × WOF strips. Subcut:
(4) 4 ½" × 8 ½" rectangles. Label as D.
(4) 4 ½" × 4 ½" squares. Label as E.



Green Geo Leaves

Cut (1) 5" × WOF strip. Subcut:
(4) 5" × 5" squares. Label as F.
Cut (1) 4 ½" × WOF strip. Subcut:
(8) 4 ½" × 4 ½" squares. Label as G.



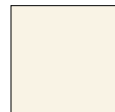
Cream Watercolor Sunflowers

Cut (1) 5" × WOF strip. Subcut:
(4) 5" × 5" squares. Label as H.
Cut (2) 4 ½" × WOF strips. Subcut:
(16) 4 ½" × 4 ½" squares. Label as I.



Beige Main

Cut (5) 5 ½" × WOF strips. Piece (3) together end-to-end; subcut:
(2) 5 ½" × 50 ½" strips. Label as J.
From remaining strips, subcut:
(2) 5 ½" × 40 ½" rectangles. Label as K.



Vintage White Confetti Cotton™ Solid

Cut (1) 5" × WOF strip. Subcut:
(8) 5" × 5" squares. Label as L.
Cut (3) 4 ½" × WOF strips. Subcut:
(8) 4 ½" × 8 ½" rectangles. Label as M.
(8) 4 ½" × 4 ½" squares. Label as N.
Cut (4) 2 ½" × WOF strips. Subcut:
(2) 2 ½" × 40 ½" rectangles. Label as O.
(2) 2 ½" × 36 ½" rectangles. Label as P.

EVENING STAR TABLE TOPPER



Sienna Geo Floral

Cut (11) 2 ½" × WOF strips. Set (7) aside for binding.

From remaining strips, subcut:

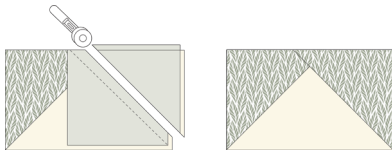
(4) 2 ½" × 32 ½" rectangles. Label as Q.

SEWING TECHNIQUES

Sew all seams RST and with a ¼" seam allowance unless stated otherwise. Refer to the Table Topper Layout Diagram for placement of the prints. Press seams as desired unless stated otherwise. Dimensions listed in steps are unfinished sizes. Please refer to the following general sewing techniques as these methods are referenced throughout the pattern in their abbreviated form.

STITCH AND FLIP FLYING GEESSE METHOD (SNF-FG)

Draw a diagonal line, corner to corner, on the wrong side of (2) squares. Place (1) square in a corner of (1) rectangle, RST, matching raw edges in the corner to be replaced. Sew on the drawn line. Trim the seam allowance outside the sewn line to ¼". Flip the square away from the rectangle and press, replacing the corner. Repeat with the second square in the opposite corner. The size of the original rectangle does not change.



2-AT-A-TIME HALF SQUARE TRIANGLE METHOD (HST)

Place (2) squares RST. Draw a diagonal line on the wrong side of (1) square. Sew ¼" on each side of the drawn line. Cut on the drawn line to create (2) HSTs. Press toward the darker fabric. Trim HSTs to the indicated size.

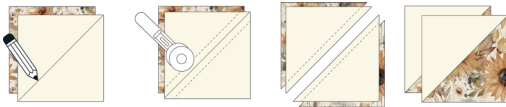


TABLE TOPPER ASSEMBLY

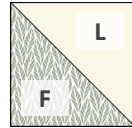
- Gather the required pieces and use the 2-at-a-time HST method to make the units shown below, referencing the diagrams for quantity, proper placement, and orientation.

Make (8)



4 ½" × 4 ½"

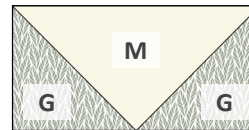
Make (8)



4 ½" × 4 ½"

- Gather the required pieces and use the SNF-FG method to make the units shown below, referencing the diagrams for quantity, proper placement, and orientation.

Make (4)



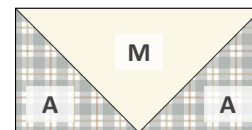
4 ½" × 8 ½"

Make (4)



4 ½" × 8 ½"

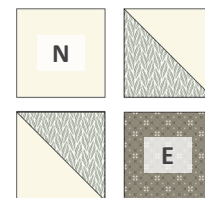
Make (4)



4 ½" × 8 ½"

- Arrange (1) **N**-square, (2) F/L HST units, and (1) **E**-square as shown below. Sew the pieces and units together into pairs. Next, sew the pairs together to make (1) Corner Unit. Repeat to make (4) total units.

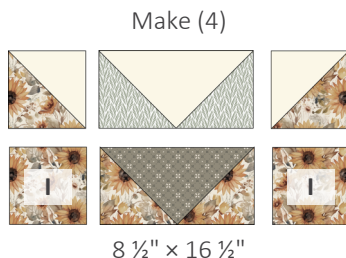
Make (4)



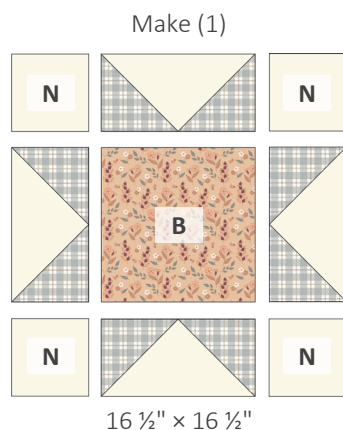
8 ½" × 8 ½"

EVENING STAR TABLE TOPPER

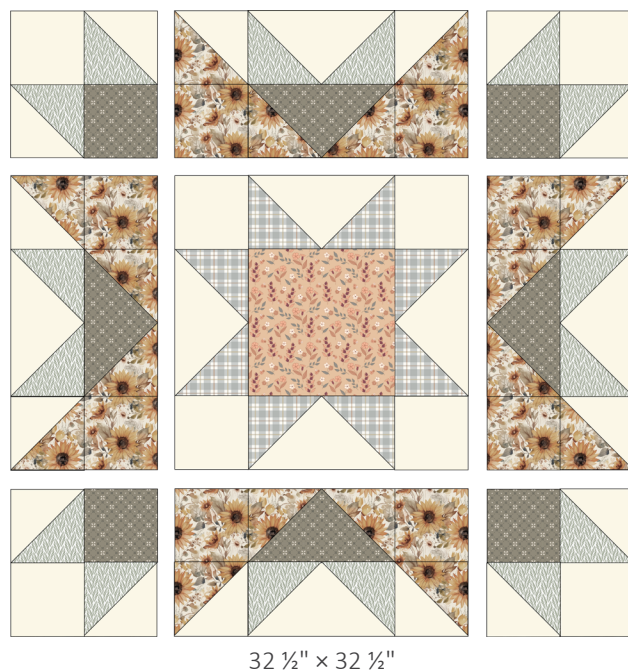
4. Arrange (2) H/L HST units, (1) G/M SNF-FG unit, (2) **I**-squares, and (1) D/I SNF-FG unit as shown below. Sew the units and pieces together into rows. Next, sew the rows together to make (1) Side Unit. Repeat to make (4) total units.



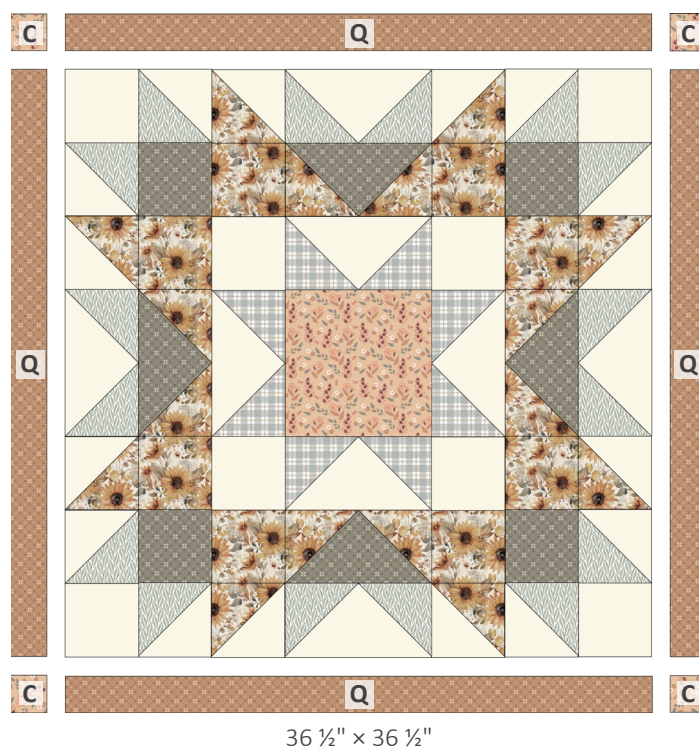
5. Arrange (4) **N**-squares, (4) A/M SNF-FG units, and (1) **B**-square as shown below. Sew the pieces and units together into rows. Next, sew the rows together to make (1) Center Unit.



6. Arrange (4) Corner Units, (4) Side Units, and (1) Center Unit as shown below. Sew the units together into rows. Next, sew the rows together to make the table topper center.



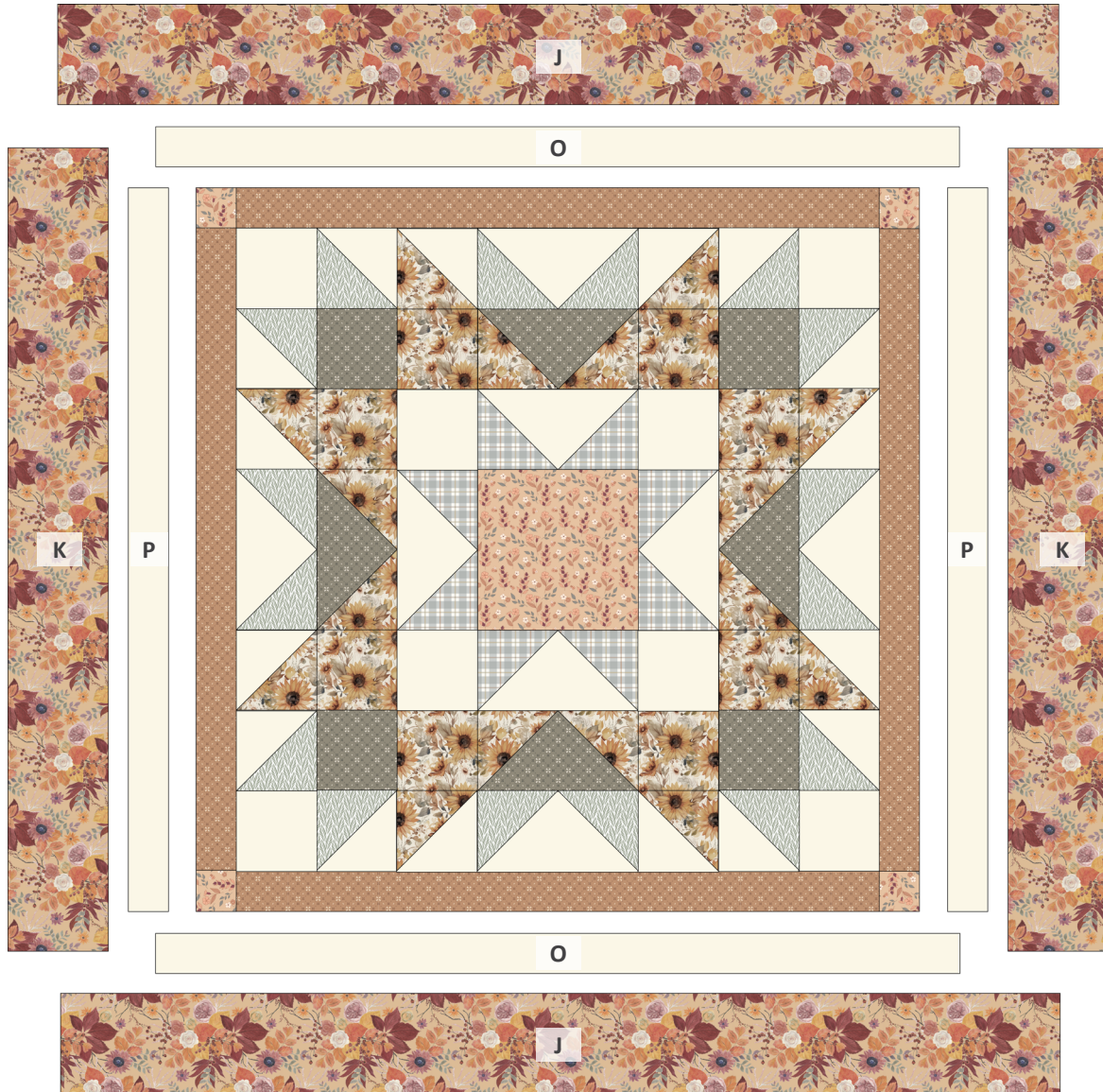
7. Arrange (4) **C**-squares, (4) **Q**-rectangles, and the table topper center as shown below. Sew the pieces together into rows. Next, sew the rows together. The table topper center should now measure $36\frac{1}{2}" \times 36\frac{1}{2}"$.



EVENING STAR TABLE TOPPER

8. Sew (1) **P**-rectangle to each side of the table topper center as shown below. Next, sew (1) **O**-rectangle to the top and bottom. In the same manner, sew **K**-rectangles to the sides and **J**-strips to the top and bottom to complete the table topper top.

TABLE TOPPER LAYOUT DIAGRAM



50 ½" × 50 ½"

FINISHING INSTRUCTIONS

9. Layer the table topper top, batting, and backing. Baste the table topper layers together and quilt as desired. Sew the Sienna Geo Floral binding strips together end-to-end. Then bind the trimmed, finished table topper using your favorite binding method.

Enjoy and share your table topper using the hashtags: [#eveningontheprairiefabric](#), [#eveningstartabletopper](#), [#rileyblakedesigns](#), and [#iloverileyblake](#).