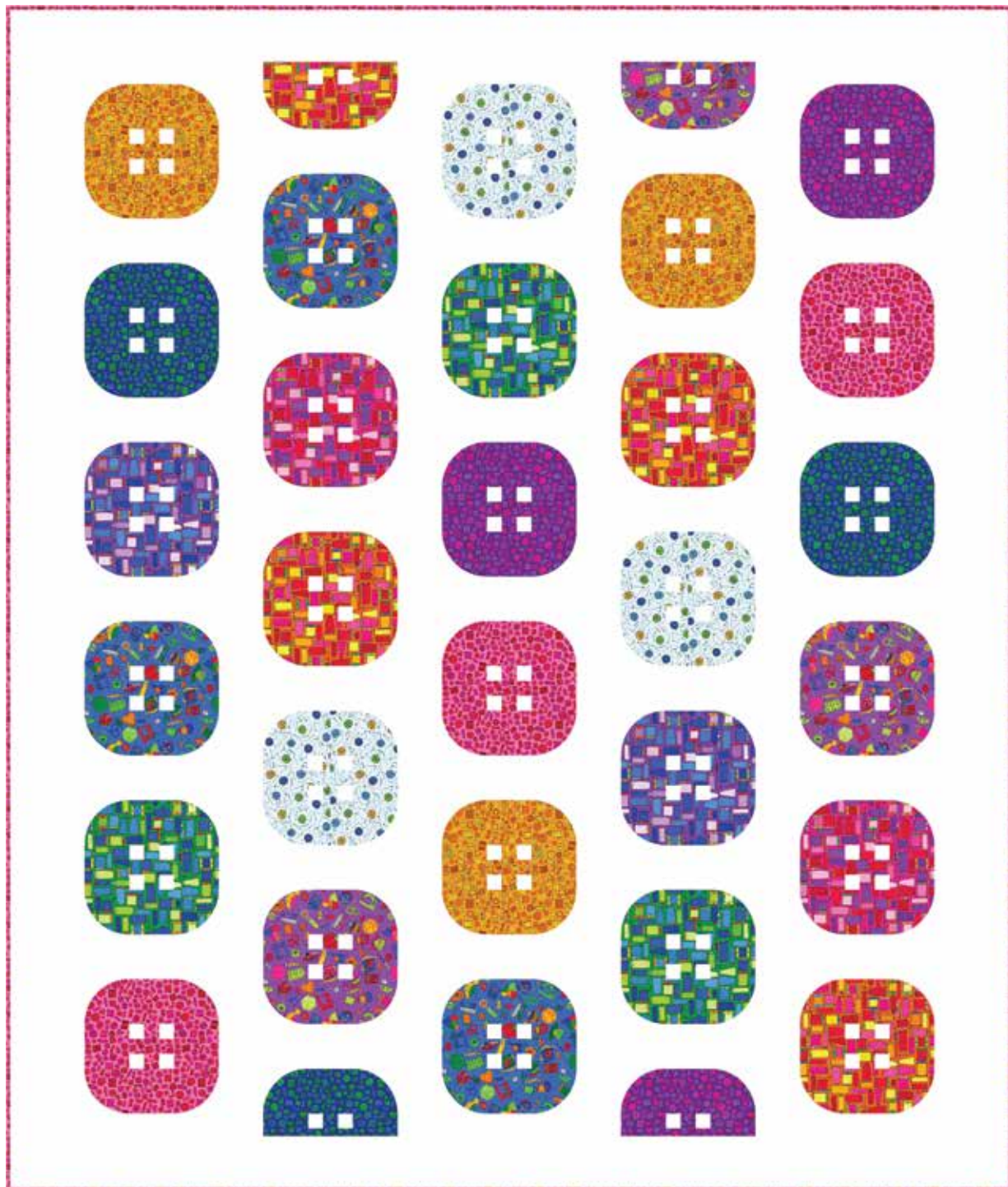


# Cute as a Button

Designed by Wendy Sheppard  
Featuring the Sewing 101 fabric collection for RJR Fabrics



Note: This quilt is a digital representation. Your finished quilt may vary slightly.

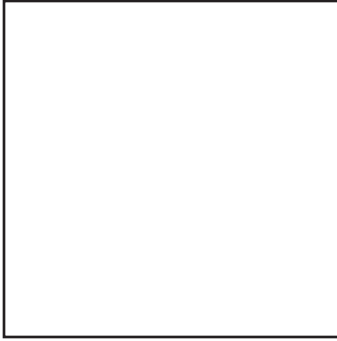
Intermediate



#quiltwithlove

# Cute as a Button Color Card Sewing 101 fabric collection

Fabric A - #9617\_033



Fabric B - #3423\_001



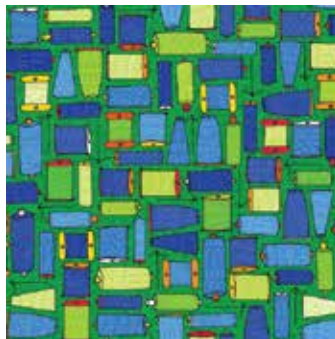
Fabric C - #3423\_002



Fabric D - #3424\_001



Fabric E - #3424\_002



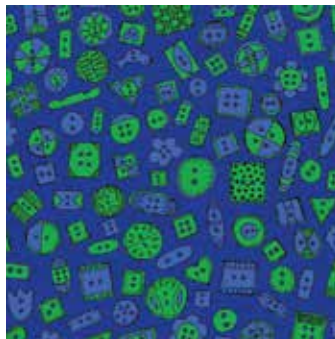
Fabric F - #3424\_003



Fabric G - #3424\_004



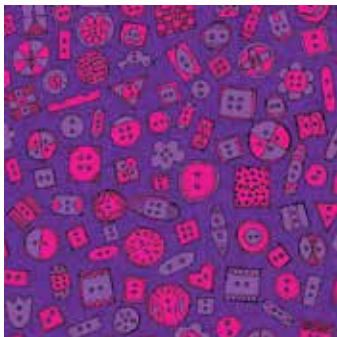
Fabric H - #3425\_001



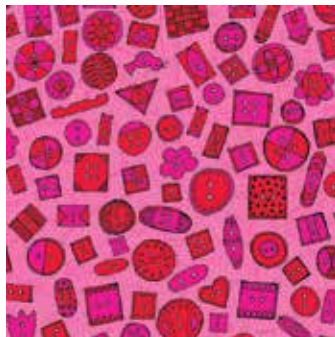
Fabric I - #3425\_002



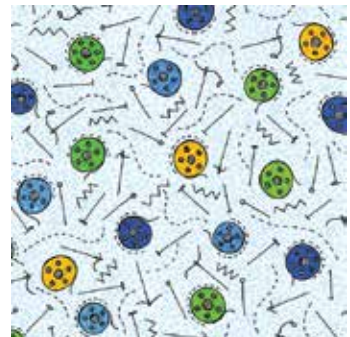
Fabric J - #3425\_003



Fabric K - #3425\_004



Fabric L - #3426\_001





## Yardage Requirements

3/8 yard each:

Fabric F - #3424\_003

Fabric G - #3424\_004

1/2 yard each:

Fabric B - #3423\_001

Fabric C - #3423\_002

Fabric E - #3424\_002

Fabric H - #3425\_001

Fabric I - #3425\_002

Fabric J - #3425\_003

Fabric L - #3426\_001

5/8 yard Fabric D - #3424\_001

1 yard Fabric K - #3425\_004 (includes binding)

4 yards Fabric A - #9617\_033

5 yards backing fabric

75" x 87" piece of batting

Clear template plastic

Basic sewing supplies

## Cutting and Preparation

Trace the templates on p. 5 onto clear plastic template material and cut out. Use the templates to cut the pieces from the indicated fabrics.

### From Fabric A, cut:

Seven 4" x WOF strips

Thirty-five 2" x WOF strips; subcut into sixty 2" x 12-1/2" pieces, fifty-six 2" x 9-1/2" pieces and eight 2" x 5" pieces

Five 1-1/2" x WOF strips; subcut into one hundred twenty 1-1/2" squares

One hundred twenty of piece #2

### From each of Fabric B, E, I and L, cut:

One 3-1/2" x WOF strip; subcut into twelve 3-1/2" squares

One 1-1/2" x WOF strip; subcut into three 1-1/2" x 3-1/2" pieces and six 1-1/2" squares

Twelve of piece #1

### From each of Fabric C, H and J, cut:

One 3-1/2" x WOF strip; subcut into nine 3-1/2" squares, two 2" x 3-1/2" pieces, two 1-1/2" x 3-1/2" pieces and one 1" x 3-1/2" piece

One 1-1/2" x WOF strip; subcut into four 1-1/2" squares

Ten of piece #1

### From Fabric D, cut:

Two 3-1/2" x WOF strips; subcut into thirteen 3-1/2" squares, two 2" x 3-1/2" pieces, three 1-1/2" x 3-1/2" pieces and one 1" x 3-1/2" piece

One 1-1/2" x WOF strip; subcut into seven 1-1/2" squares

Fourteen of piece #1

### From each of Fabric F and G, cut:

One 3-1/2" x WOF strip; subcut into eight 3-1/2" squares and two 1-1/2" x 3-1/2" pieces

One 1-1/2" x WOF strip; subcut into four 1-1/2" squares

Eight of piece #1

### From Fabric K, cut:

One 3-1/2" x WOF strip; subcut into twelve 3-1/2" squares

Eight 2-1/4" x WOF strips for binding

One 1-1/2" x WOF strip; subcut into three 1-1/2" x 3-1/2" pieces and six 1-1/2" squares

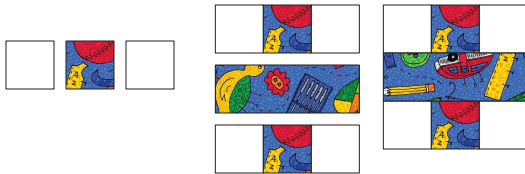
Twelve of piece #1

## Make the Button Blocks

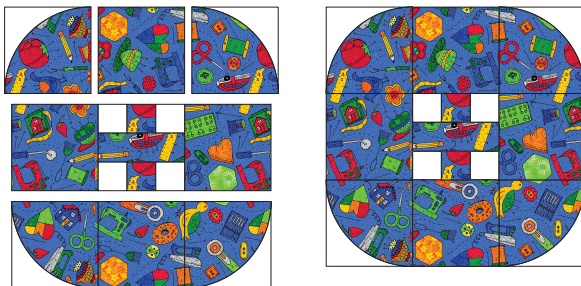
1. Sew one #2 A piece to one #1 B piece to make a corner unit measuring  $3\frac{1}{2}$ " square. Make a total of four corner units.



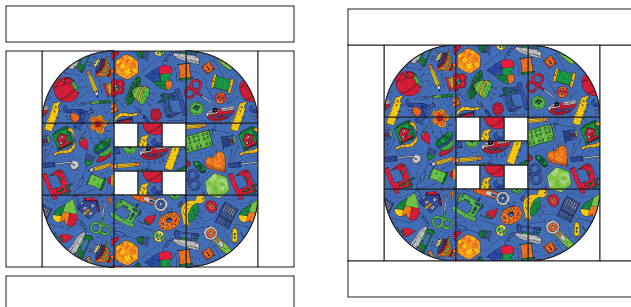
2. Sew  $1\frac{1}{2}$ " A squares to opposite sides of one  $1\frac{1}{2}$ " B square to make a row unit. Make two row units. Sew row units to opposite long sides of one  $1\frac{1}{2}$ " x  $3\frac{1}{2}$ " B piece to make a block center.



3. Lay out four corner units, four  $3\frac{1}{2}$ " B squares, and one block center into three rows of three units/squares each. Sew into rows and join the rows to make a button unit.



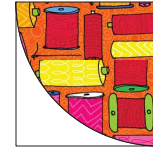
4. Sew  $2$ " x  $9\frac{1}{2}$ " A pieces to opposite sides of the button unit. Sew  $2$ " x  $12\frac{1}{2}$ " A pieces to the top and bottom to complete a button block. Square to measure  $12\frac{1}{2}$ " square.



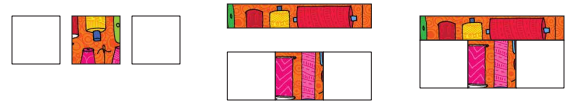
5. Make a total of three blocks each using Fabrics B, D, E, I, K and L. Make a total of two blocks each using Fabrics C, F, G, H and J.

## Make the Button Blocks

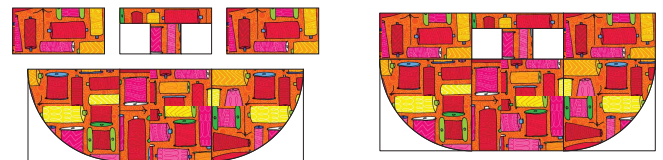
1. Sew one #2 A piece to one #1 D piece to make a corner unit measuring  $3\frac{1}{2}$ " square. Make a total of two corner units.



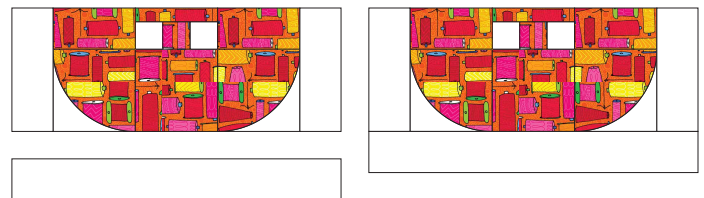
2. Sew  $1\frac{1}{2}$ " A squares to opposite sides of one  $1\frac{1}{2}$ " D square to make a row unit. Sew row unit to one  $1$ " x  $3\frac{1}{2}$ " D piece to make a half block center.



3. Lay out two corner units, one  $3\frac{1}{2}$ " D square, two  $2$ " x  $3\frac{1}{2}$ " D pieces and one half block center into two rows of three units/squares each. Sew into rows and join the rows to make a half button unit.

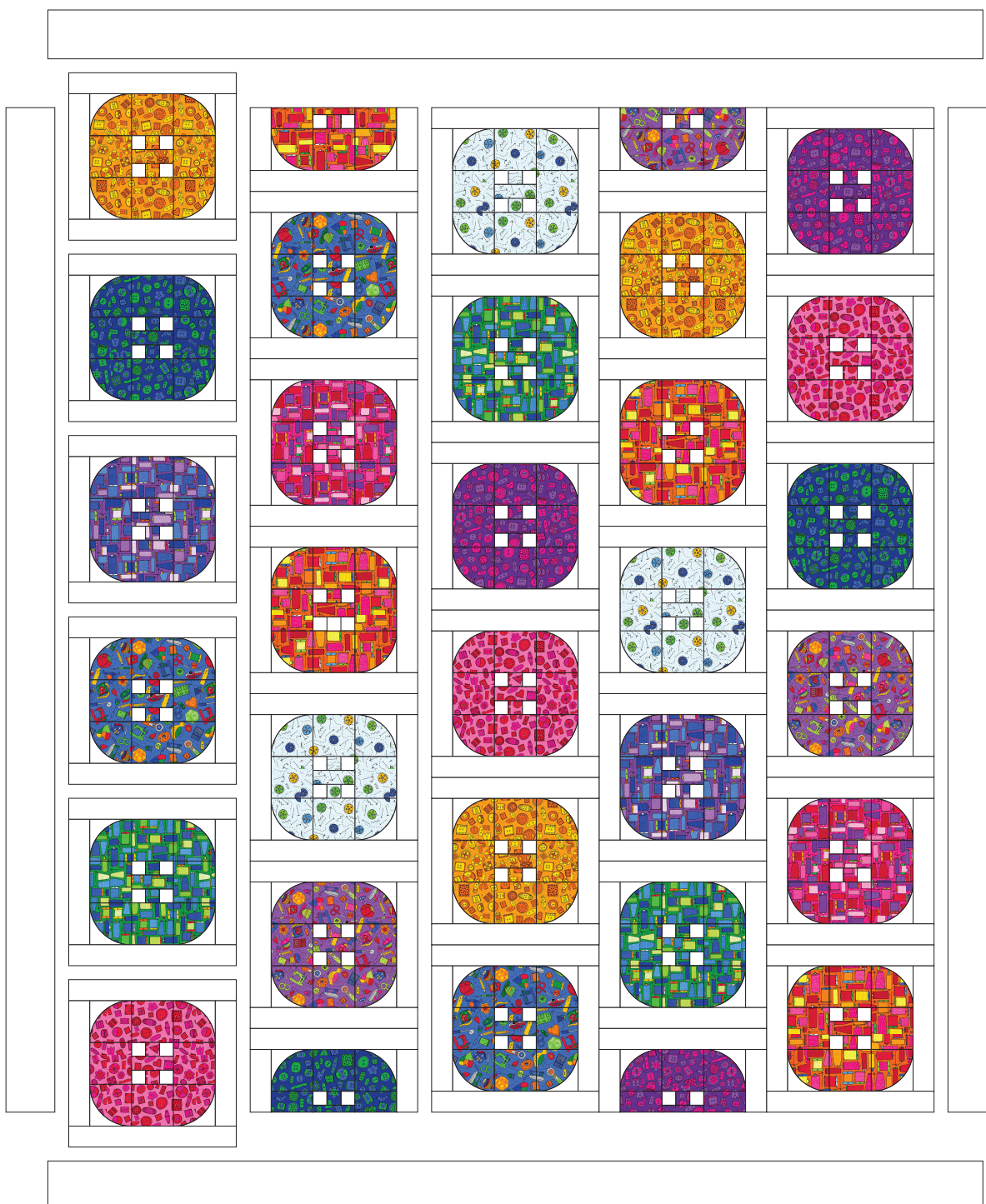


4. Sew  $2$ " x  $5$ " A pieces to opposite sides of the half button unit. Sew one  $2$ " x  $12\frac{1}{2}$ " A piece to the bottom to complete a half button block. Square to measure  $6\frac{1}{2}$ " x  $12\frac{1}{2}$ ".



5. In the same way, make one half block each using Fabric C, H, and J.

## Quilt Assembly Diagram



### Assembly

1. Referring to the Quilt Assembly Diagram, lay out the twenty-eight button blocks and four half button blocks into five columns. Sew the blocks into columns and join the rows to complete the quilt center.

2. Sew the seven 4" x WOF A strips short ends together into one long strip. Cut two 72-1/2" lengths and two 67-1/2" lengths. Sew the longer

strips to the sides of the quilt and the shorter strips to the top and bottom.

### Finishing

Lay the backing right side down, batting, and quilt top right side up. Baste the layers together and quilt as desired. Use the eight 2-1/4" x WOF K strips to bind the quilt.

## Cute as a Button Templates

Shown at 100%.

Trace onto clear plastic template material.

Lighter outside line is the cutting line;  
bolder inner line is the finished size.

