



HOFFMAN FABRICS  
EST. 1924

# CHRISTMAS CANDY

ADVANCED BEGINNER |

Finished Quilt: 64" x 80"



Quilt design by Wendy Sheppard, featuring Winter Blossoms. Holiday crackers adorn this festive quilt. Strip piecing makes it fun and quick to make. Fantastic way to highlight these beautiful fabrics.

Free pattern available at [hoffmanfabrics.com](http://hoffmanfabrics.com)



[hoffmanfabrics.com](http://hoffmanfabrics.com)

# CHRISTMAS CANDY

Quilt design by Wendy Sheppard  
64" x 80"

## Yardage Chart

	<i><b>FABRIC</b></i>	
A	P7608 4G-Black Gold	1/8 yard
B	P7608 20G-Natural Gold	1/2 yard
C	P7609 122G-Jet Gold	3/8 yard
D	P7613 20G-Natural Gold	1 yard
E	P7615 20G-Natural Gold	3/8 yard
F	P7615 60G-Hunter Gold	3/8 yard
G	P7616 20G-Natural Gold	1 1/4 yard
H	P7617 60G-Hunter Gold	3/8 yard
I	N7524 78G-Scarlet Gold	3/8 yard
J	G8555 3G-White Gold	2 7/8 yards
K	G8555 78G-Scarlet Gold	1 5/8 yards*

\*includes binding



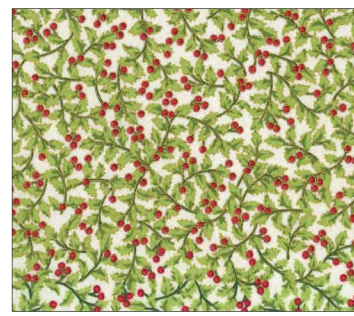
P7608 4G-Black Gold



P7608 20G-Natural Gold



P7609 122G-Jet Gold



P7613 20G-Natural Gold

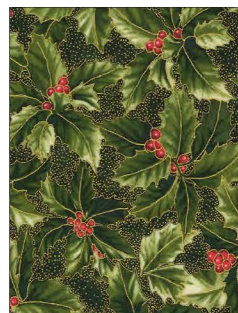


30" x 36"

**Bonus quilt project  
using leftovers!**



P7615 20G-Natural Gold



P7615 60G-Hunter Gold



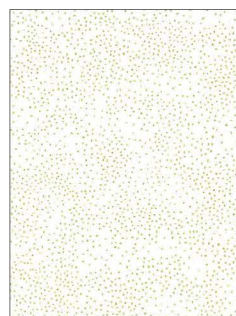
P7616 20G-Natural Gold



P7617 60G-Hunter Gold



N7524 78G-Scarlet Gold



G8555 3G-White Gold



G8555 78G-Scarlet Gold

View swatches and download quilt patterns at [hoffmanfabrics.com](http://hoffmanfabrics.com)

## CHRISTMAS CANDY

Quilt design and instructions by Wendy Sheppard

Specification: Advanced Beginner

Quilt Finished Size: 64" x 80"

Block Finished Size: 8" x 8"

### Cutting Instructions:

From Fabric A, cut for star blocks, (1) 2 3/4" x WOF. Sub-cut (10) 2 3/4" x 2 3/4" and (5) 2" x 2" squares.

From Fabric B, for patch blocks, (1) 8 1/2" x WOF. Sub-cut (4) 8 1/2" x 8 1/2" squares.

Also from Fabric B, for stripe blocks, (1) 5 1/2" x WOF. Sub-cut (4) 5 1/2" x 8 1/2" rectangles.

From Fabrics C & F, for patch blocks, cut (1) 8 1/2" x WOF. Sub-cut (4) 8 1/2" x 8 1/2" squares.

From Fabric D, for QST blocks, cut (4) 8 1/2" x WOF. Sub-cut (64) 2" x 8 1/2" rectangles.

From Fabric E, cut for patch and stripe blocks, (1) 8 1/2" x WOF. Sub-cut (2) 8 1/2" x 8 1/2" squares and (1) 5 1/2" x 8 1/2" rectangle.

From Fabric G, for QST blocks, cut (2) 8 1/2" x WOF. Sub-cut (64) 1 1/4" x 8 1/2" rectangles.

Also from Fabric G, for star blocks, cut (2) 1 1/2" x WOF. Sub-cut (5) 1 1/2" x 8 1/2" rectangles,

(1) 2" x WOF. Sub-cut (20) 2" x 2" squares.

(1) 2 3/4" x WOF. Sub-cut (10) 2 3/4" x 2 3/4" squares.

(2) 3 1/2" x WOF. Sub-cut (5) 3 1/2" x 8 1/2" rectangles.

(1) 5" x WOF. Sub-cut (5) 1" x 5" and (5) 3 1/2" x 5" rectangles.

For stripe blocks, cut (3) 1" x WOF. Sub-cut (10) 1" x 8 1/2" rectangles and (1) 1 1/2" x WOF. Sub-cut (4) 1 1/2" x 8 1/2" rectangles.

From Fabric H, cut for patch and stripe blocks, (1) 8 1/2" x WOF. Sub-cut (1) 8 1/2" x 8 1/2" and (6) 4" x 8 1/2" rectangles.

From Fabric I, cut for patch and stripe blocks, (1) 8 1/2" x WOF. Sub-cut (2) 8 1/2" x 8 1/2" squares and (2) 4" x 8 1/2" rectangles.

From Fabric J, cut for QST blocks, (15) 4 1/2" x WOF. Sub-cut (128) 4 1/2" x 4 1/2" squares.

Also from Fabric J, for outer border, cut (7) 4 1/2" x WOF. Piece strips and sub-cut (2) 4 1/2" x 64 1/2" and (2) 4 1/2" x 72 1/2" strips.

From Fabric K, cut for QST blocks, (4) 8 1/2" x WOF. Sub-cut (64) 2 1/4" x 8 1/2" rectangles.

Also from Fabric K, for stripe blocks, cut (3) 1 1/2" x WOF. Sub-cut (10) 1 1/2" x 8 1/2" rectangles.

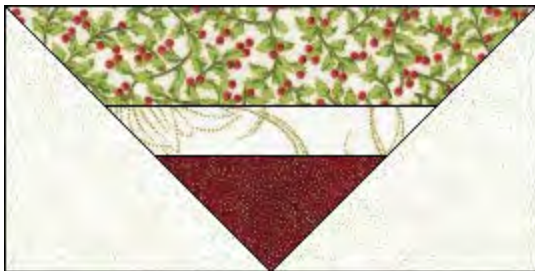
Plus (8) 2 1/4" WOF strips for binding.

### Constructing QST blocks

1. Rectangle Unit. Sew together (from top to bottom) 3 rectangles: (1) 2" x 8 1/2" Fabric D, (1) 1 1/4" x 8 1/2" Fabric G and (1) 2 1/4" x 8 1/2" Fabric K.

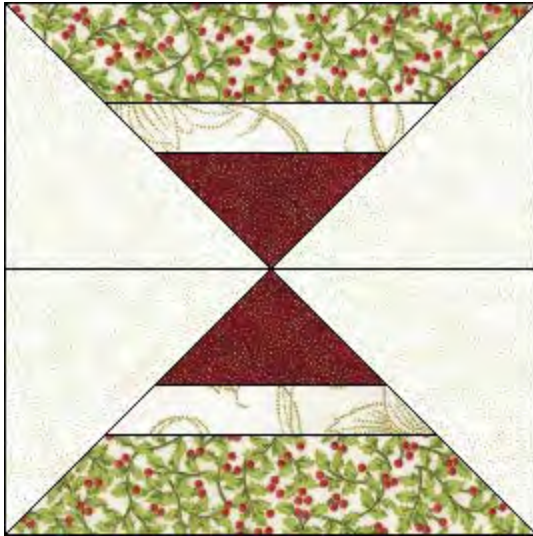


2. Flying Geese. Draw a diagonal line on the wrong side of (1) 4 1/2" x 4 1/2" Fabric J square. Place square, right sides together, at a corner of the sewn rectangle unit. Sew on drawn line. Trim 1/4" away from sewn line. Open and press to reveal white corner triangle. Repeat with another (1) 4 1/2" x 4 1/2" Fabric J square at the other side of the same sewn rectangle unit to complete 1 flying geese unit.



Repeat to make a total of 2 flying geese units.

3. Sew units together to complete 1 QST block.



### Constructing Star Blocks

1. QST units. Draw a diagonal line on the wrong side of (1)  $2\frac{3}{4}$ " x  $2\frac{3}{4}$ " Fabric G square. Place square, right sides together, on (1)  $2\frac{3}{4}$ " x  $2\frac{3}{4}$ " Fabric A square. Sew  $\frac{1}{4}$ " away, on right and left sides of drawn line. Cut along drawn line to yield 2 HST units. Open and press. Draw a diagonal line on the wrong side of (1) HST unit across the two prints. Lay the HST unit, right sides together, on the other HST unit. Sew  $\frac{1}{4}$ " away, on right and left sides of drawn line. Cut along drawn line to yield 2 QST units.



Repeat to make a total of 4 QST units.

2. Sew (2) 2" x 2" Fabric G squares to the opposite sides of (1) QST unit to make a row. Repeat to make 2 rows.



Sew (2) QST units to the opposite sides of (1) 2" x 2" Fabric A square to make a row.



3. Sew rows to complete (1) star unit.



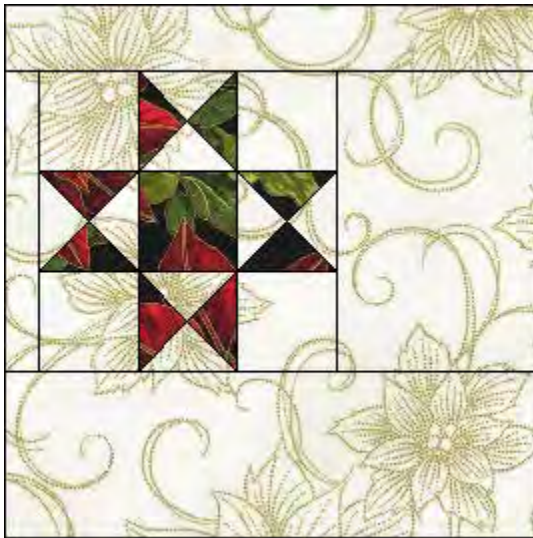
4. Sew in the following order Fabric G pieces to star unit to complete star block:

left - (1) 1" x 5"

right - (1) 3 1/2" x 5"

top - (1) 1 1/2" x 8 1/2"

bottom - (1) 3 1/2" x 8 1/2"



Repeat to make a total of (3) blocks, and (2) mirror-imaged blocks.



### Constructing Stripe Block A (using Fabric B block as example)

1. Sew (2) 1" x 8 1/2" Fabric G rectangles to the opposite long sides of (1) 5 1/2" x 8 1/2" Fabric B rectangles, followed by (2) 1 1/2" x 8 1/2" Fabric K rectangles to the opposite long sides of the sewn unit to complete 1 block.



Repeat to make a total of (4) blocks, and additional block white holly.

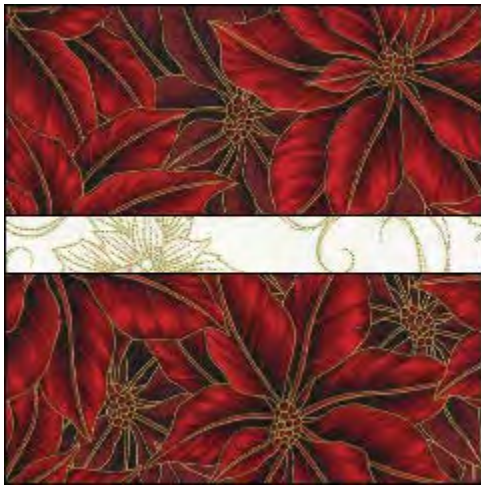


Constructing Stripe Block B (using Fabric H block as example)

1. Sew (2) 4" x 8 1/2" Fabric H rectangles to the opposite long sides of (1) 1 1/2" x 8 1/2" Fabric G rectangle to complete (1) block.

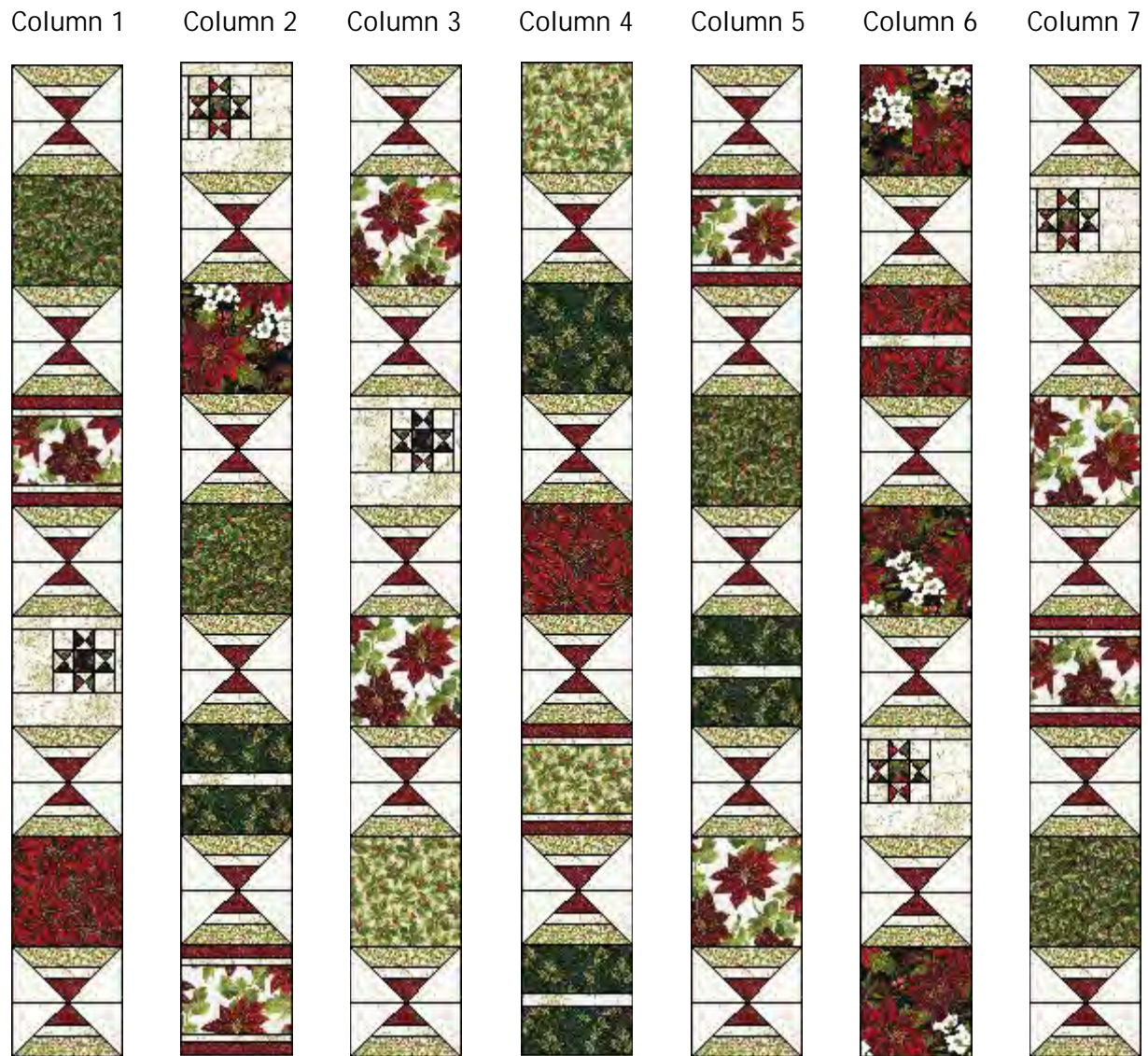


Repeat to make a total (3) blocks and additional block with Fabric I.



## Quilt Top Assembly

1. Pieced columns. Sew pieced and patch blocks together to make pieced columns, as shown.



2. Sew columns together to complete quilt center.

3. Outer border. Sew (2) 4 1/2" x 72 1/2" Fabric J strips to the opposite long sides of quilt center, followed by (2) 4 1/2" x 64 1/2" Fabric J strips to the remaining opposite short sides to complete quilt top.



Quilting Instructions:

1. With the backing fabric laying taut, place batting and then quilt top to form quilt sandwich. Baste sandwich.
2. Quilt as desired.
3. Bind to finish quilt.

Quilt concept using trimmed off dog ears from QST blocks

1. Sew together trimmed off dog ears to make HST units. Aligning diagonal seam against the 45 degree line of a quilting ruler, trim HST units to measure 3 1/2" x 3 1/2" raw edge to raw edge. There should be 128 HST units.
2. A wall-hanging (30" x 36") uses 120 HST units, as shown. Will require 3/8 of fabric for binding.

