

featuring #Heartlandfabrics



Brio



Brio

HANDBAG DESIGNED BY PAT BRAVO



Pat Bravo

heartland

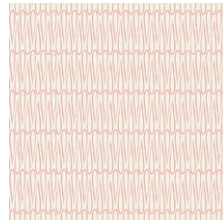
FABRICS DESIGNED BY PAT BRAVO



WARM FIELD



HRT-85300
BLOMMA GARDEN PASTICHE



HRT-85301
REGN DROPS SUN



HRT-85303
PINETRE DAYBREAK



HRT-85304
UNN CROSS PINE



HRT-85305
LITEN DITSY FIELD



HRT-85306
HUS HOOT GUL



HRT-85307
DROPPAR MOONDUST



HRT-85308
TREKANT ROWS CANDID



HRT-85309
SCANDI PLANE GREY



HRT-85310
DULCET PATHS PASTELL

LUCNA MEADOW



HRT-95300
BLOMMA GARDEN GOLDEN



HRT-95302
UNN CROSS SILVER



HRT-95303
PINETRE FOG



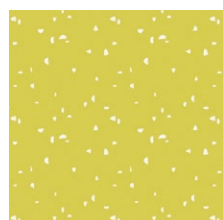
HRT-95304
UNN CROSS OCHRE



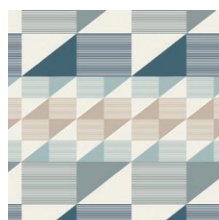
HRT-95305
LITEN DITSY WHISPER



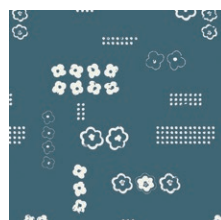
HRT-95306
HUS HOOT GRA



HRT-95307
DROPPAR BURST



HRT-95308
TREKANT ROWS BREEZE



HRT-95309
SCANDI PLANE BALTIC



HRT-95310
DULCET PATHS MIST



FEEL THE DIFFERENCE © 2016 Courtesy of Art Gallery Quilts LLC. All Rights Reserved.

FABRIC REQUIREMENTS

Fabric A	C-85306	5/8 yd.
Fabric B	DEN-T-3002	1/2 yd.
Fabric C	DEN-L-4000	1/3 yd.
Fabric D	PRE-807	5/8 yd.

ADDITIONAL MATERIALS

Two (2) 1/2" Swivel Claps

One (1) 1/2" Rectangle Adjustable Slider

Two (2) 1/2" D Rings

Two (2) Small (1/2") Magnetic Snaps

Woven Interfacing

Fusible Fleece

CUTTING DIRECTIONS

Two (2) Front Bag/Back Bag pieces from Fabric **A**, **D**, and Fusible Fleece

Four (4) Front Bag/Back Bag Pieces from Woven Interfacing

One (1) 3" x WOF Strip from Fabric **A** and **D** (Side Panel)

Two (2) Flap Pattern Pieces from Fabric **B**

Eight (8) Corner pieces from Fabric **B**

Two (2) 3" x 13" strips from Fabric **B** (Flap Panel)

One (1) 4" x 10" strip from Fabric **C** (Handle)

One (1) 4" x WOF strip from Fabric **C** (Strap)

Two (2) 4" x 9 1/4" strips from Fabric **C** (Flap Straps)

Two (2) 4" x 3" strips from Fabric **C** (Strap extenders)

CONSTRUCTION

Sew all rights sides together with 1/2" seam allowance unless otherwise noted.

• Step 1: Attaching Fusible

- Take all of your front/back bag pieces from Fabric **A** and **D**, a 3" x WOF strip from Fabric **D**, both 4" x 9 1/4" strips from Fabric **C** and 4" x 10" strip from Fabric **C** and fuse woven interfacing to the wrongs sides of the fabric.
- Next take your front bag pieces and 3" x WOF strip from Fabric **A** and fuse a piece of fusible fleece to the wrong side of the fabric.

• Step 2: Straps

- Take your handle, strap, and strap extender strips cut from Fabric **C** and fold raw edges into the center of your strip and press. Fold in half and press.
- Topstitch each side of your straps. (Diagram 1)

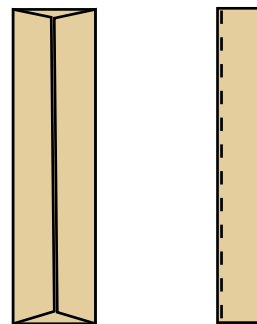


DIAGRAM 1

• Step 3: Applying the Magnetic Snap

- For your Flap Straps fold raw edges into the center of your strip and press and then fold in half and press. Open back up and measure 2 1/2" up from the bottom of your strap and mark. (Diagram 2)
- Trim each corner. This is where you will place the male side of your magnetic snap.

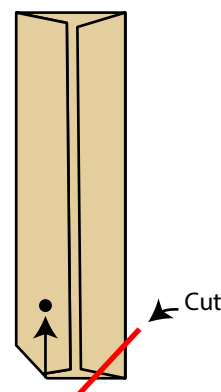


DIAGRAM 2

- Note: A magnetic snap has two main components, a male side & a female side. The magnetic snap also comes with a backing washer for each component.
- When you purchase a magnetic snap, you will receive 4 metal pieces in total.
- Place a washer on your mark. Mark with a pencil two lines, from top and bottom tracing inside the rectangles on the washer. (Diagram 3)

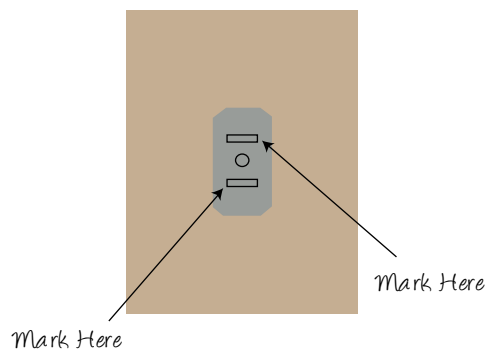


DIAGRAM 3

- Remove the washer and make two slits on those marks using a small pair of sharp scissors.
- Place the arms of the male magnet clasp through the slits from the right side of the strip. (Diagram 4)

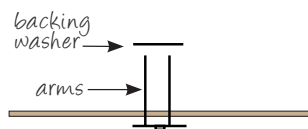


DIAGRAM 4

- Put the washer over the arms from the interfacing side.
- Using pliers, fold each arm of the clasp out and down in opposite directions around the washer. Make the arms as flat as a possible. (Diagram 5)

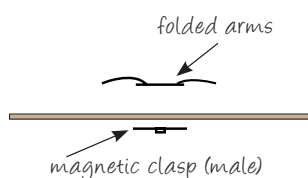


DIAGRAM 5

- Next fold under raw edges about 1" and fold in half and press. Topstitch around your strip. (Diagram 6)
- Repeat this process for your other flap strap.

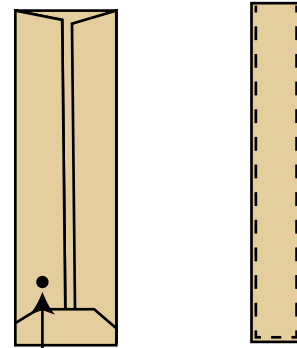


DIAGRAM 6

• Step 4: Creating the Flap

- Take one of your flap pieces and place your flap straps 2 1/2" in from each side. (Diagram 7)
- Topstitch your flap straps to your flap. Stop at least a 1/2" from the end.

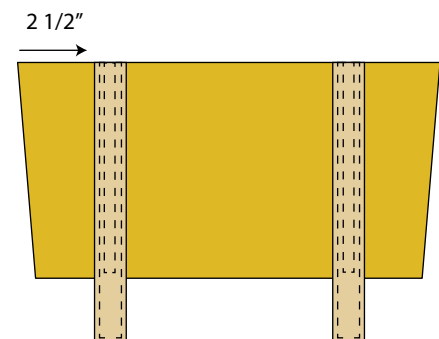


DIAGRAM 7

- Sew a 3" x 13" strip from Fabric B to the tops of both of your flap pieces.
- Place front and back flap pieces together and sew them together at 1/4".
- Clip corners on seam allowance and flip piece right sides out and press. Topstitch around entire piece at 1/8" or 1/4".
- To attach the female side of the magnetic snap repeat the same process following Diagram 3-5 with the female magnetic snap.
- Take your front bag and place flap on top and find where the male sides of the snap meets the front bag and mark. (Diagram 8)

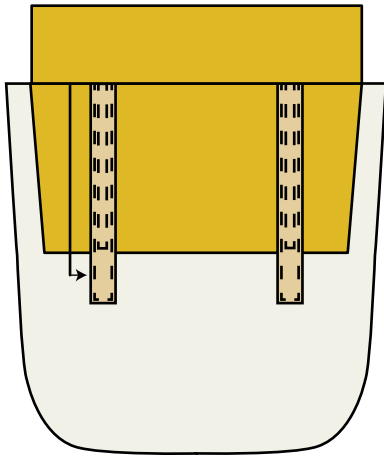


DIAGRAM 8

• Step 5: Assembling the Bag

- Take your 3" x WOF from Fabric **A** and find the center of your strip by folding it in half and making a crease with the iron. Find the center of your front bag in the same way.
- Pin and sew side panel to front bag right sides together. Trim off excess side panel and pin and sew back bag to other side of side panel.
- Next take your front and back lining pieces and trim tops of them at 1/4". Making the lining slightly shorter will help the lining sit inside the bag flatter and nicer.
- Sew side panel to front and back lining trimming the excess panel. Leave a small unsewn portion to flip right side of bag through.

• Step 6: Creating strap extenders and adjustable straps

- Thread a 1/2" D ring through strap extender and fold in half with short ends touching and stitch in place at 1/4". (Diagram 9)

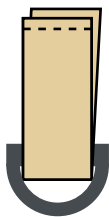


DIAGRAM 9

- Place the strap extenders at the center of your side panel and stitch into place at 1/4". (Diagram 10)

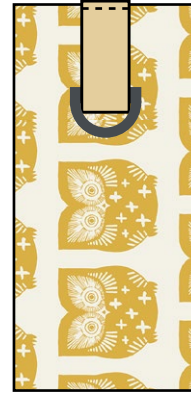


DIAGRAM 10

- Weave end of strap over the middle bar of your adjustable strap slider and down under the second side of your slider. (Diagram 11)

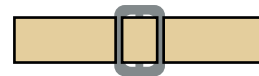


DIAGRAM 11

- Fold under the raw edge at 1". Sew end to strap, sewing a 1" box with an X in the middle. (Diagram 12)



DIAGRAM 12

- Take the other end of your strap and thread the swivel clap through the slider. (Diagram 13)



DIAGRAM 13

- Take the second end again and put it through the slider. The stitched end of your strap should be tucked inside the layers of your strap. (Diagram 14)



DIAGRAM 14

- Take the other end of your strap and thread it through the second swivel clip and fold raw edge under 1" and sew a 1" box with an X in the middle to secure to strap. (Diagram 15)



DIAGRAM 15

• Step 7: Attaching the Lining

- Sew flap at 1/4" to back side of bag making sure the front part of the flap is touching the right side of your back bag.
- Place exterior of bag inside lining making sure right sides are touching. Pin lining to the exterior of the bag and sew all the way around the top of your bag at 1/2" seam allowance.
- Pull exterior of bag through the unsewn portion in the lining.
- Handstitch or machine stitch unsewn portion.
- Place lining on the inside of your bag and topstitch the top of your bag at 1/4". Attach your strap to the D rings and your bag is complete!



Happy Sewing

#PatBravoDesign



To see more patterns, fabrics
and lots of inspiration visit:

patbravo.com

NOTE: While all possible care has been taken to ensure the accuracy of this pattern, We are not responsible for printing errors or the way in which individual work varies.

Please read instructions carefully before starting the construction of this quilt. If desired, wash and iron your fabrics before starting to cut.

© 2016 Courtesy of Pat Bravo All Rights Reserved.

Cut on Fold →

Flap



Corner Pieces

Cut 2 Pattern facing up

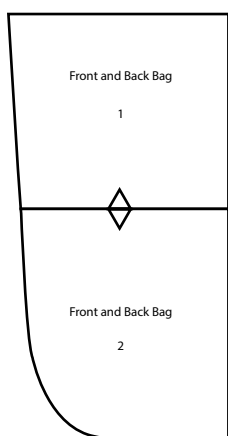
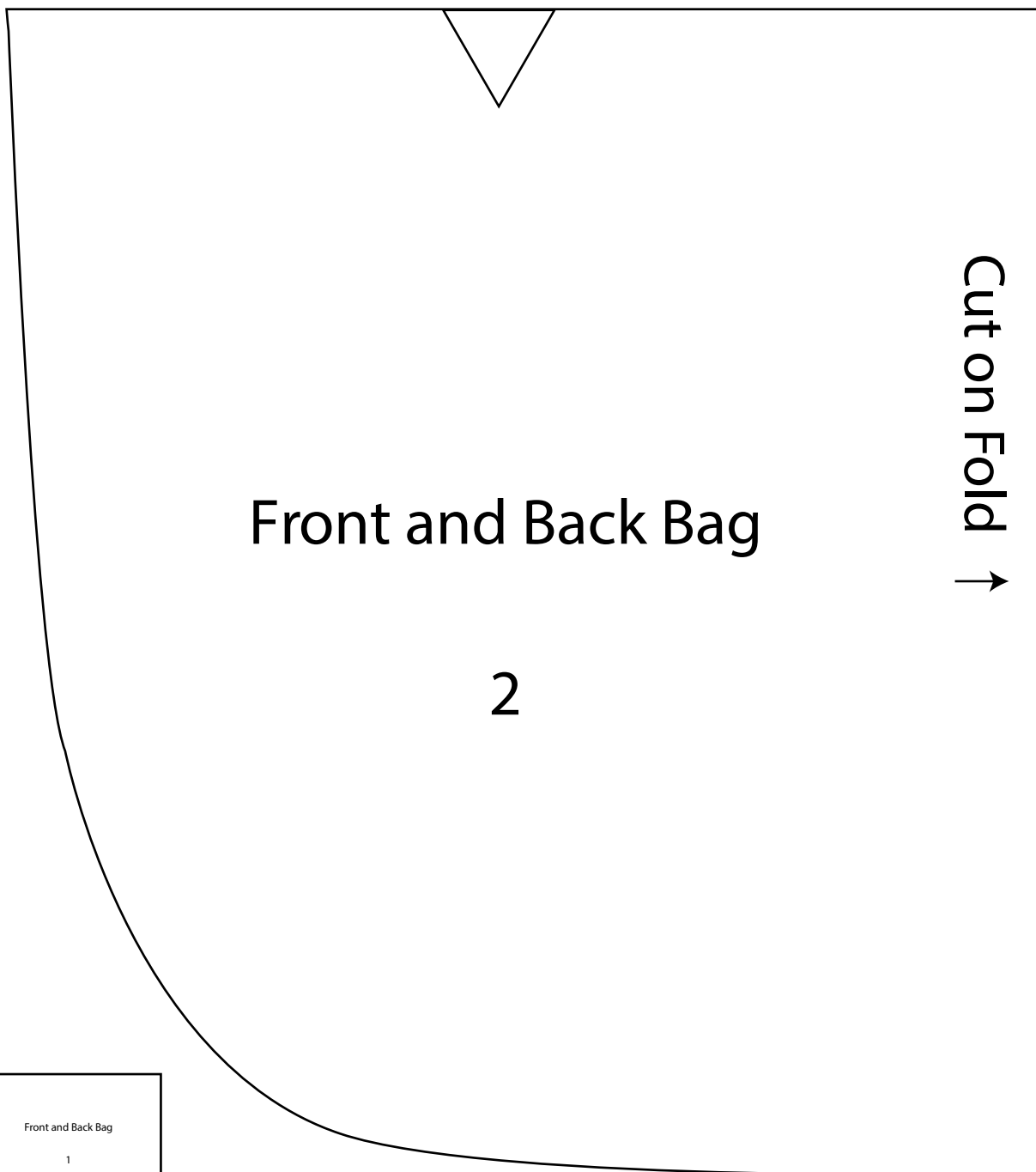
Flip Pattern piece and Cut 2

Front and Back Bag

1

Cut on Fold →





Line up notches and tape pattern pieces together.