

Bee Vintage Sew Along Guide

by Lori Holt of Bee in My Bonnet



 **Riley Blake**
DESIGNS™



 **Bee Vintage**
by Lori Holt of Bee in my Bonnet

06/20/2023



Bee Vintage Sew Along Schedule



Starting Monday, July 10, 2023

July 10	Vintage Strawberry
July 12	Vintage Apple
July 14	Vintage Cherries
July 17	Vintage Butterfly
July 19	Vintage Maple Leaf
July 21	Vintage Scottie Dog
July 24	Vintage Umbrella
July 26	Vintage Flower
July 28	Vintage Tea Pot
July 31	Vintage Dahlia
August 2	Vintage Spring Basket
August 4	Vintage Cottage
August 7	Vintage Corsage
August 9	Vintage Sunbonnet Sue
August 11	Vintage Songbird
August 14	Vintage Tulip Pot
August 16	Vintage Overall Bill
August 18	Vintage Pennsylvania Dutch
August 21	Vintage Kitty
August 23	Vintage Daisy Chain
August 25	The Big Finish!



www.beeinmybonnetco.blogspot.com

Bee Vintage Sew Along Guide

FINISHED QUILT SIZE 71" x 84"

WOF = Width of Fabric, LOF = Length of Fabric

This guide requires a basic knowledge of quilting techniques and terminology. The quilt and block diagrams portrayed are virtual images. The layout and look of your project may differ when using actual fabric.

The guide is intended to be used in conjunction with Lori Holt's Bee Vintage Sew Along. Join Lori on her blog every Monday starting July 10, 2023 at beeinmybonnetco.blogspot.com for weekly instructions. Visit [Lori's YouTube Channel](#) during Week 1 and don't forget to watch for her Bee Prepared blog post on June 19, 2023. Enjoy and share your quilt using the hashtag [#beevintagesamplerquilt](#), [#beeinmybonnet](#), [#rileyblakedesigns](#), and [#iloverileyblake](#).

*NOTE: All appliqué block backgrounds are cut a little larger than unfinished size to allow for trimming up.

The appliqué portions of the quilt are made using Lori's applique method. The link below to the Week 1 video of her previous Sew Along on Lori's YouTube Channel shows her appliqué technique, <https://www.youtube.com/watch?v=xe7nvV6BHXy>.

FABRIC REQUIREMENTS

10" Square of Each:

BEE VINTAGE

C13071 Cloud Carol
C13072 Lettuce Sarah Jane
C13073 Tea Dye Nettie
C13075 Sea Glass Elaine
C13076 Melon Gladys
C13077 Red Tola
C13079 Plum Cornelia
C13079 Teal Cornelia
C13080 Alpine Hazel
C13080 Taffy Hazel
C13083 Pewter Isabelle
C13086 Coral Suzanne
C13087 Alpine Doris
C13087 Coral Doris
C13088 Cottage Mae
C13089 Beehive Lizzie

BEE PLAIDS

C12025 Barn Red Harvest
C12025 Denim Harvest
C12026 Raisin October
C12027 Daisy Hayride
C12028 Denim Barn Dance
C12029 Granny Apple Homemade
C12030 Gray Bushel
C12031 Pebble Cider
C12032 Frosting Cobbler
C12035 Daisy Sunflower
C12036 Alpine Sweater



Bee Vintage Sew Along Guide

Fabric Cutting Guide (WOF = Width of Fabric, LOF = Length of Fabric)

Always be mindful when cutting pieces from each fabric in your kit by cutting **LARGEST PIECES FIRST**, as well as any WOF strips for the bias tape makers.

FABRIC REQUIREMENTS (cont'd.)

BEE BASICS

C6401 Red Heart
C6403 Cottage Tiny Daisy
C6403 Pebble Tiny Daisy
C6403 Red Tiny Daisy
C6404 Nutmeg Blossoms
C6405 Coral Polka Dot
C6409 Cayenne Stitched Flower

BEE CROSS STITCH

C745 Jazzberry Jam
C745 Raisin

CONFETTI COTTONS

C120 Beach

Fat 1/8 of Each:

C13070 Red Mildred
C13075 Tea Rose Elaine
C13076 Cottage Gladys
C13081 Sea Glass Alice
C13081 Taffy Alice
C13082 Frosting Mable
C13085 Tea Rose Lula
C13086 Lettuce Suzanne
C13088 Daisy Mae
C745 Pebble Bee Cross Stitch

Other Fabrics:

Fat Quarter C6400 Raisin Bee Basics Gingham
2 Yards C13070 Blue Mildred
1 ¾ Yards C13077 Denim Tola
1 ½ Yards C13078 Blue Leah
¾ Yard C13085 Denim Lula
⅓ Yard C12030 Green Bee Plaids Bushel

Background

2 ½ Yards C9711 Clover Cottage Bee Backgrounds

Suggested Backing:

2 ½ Yards WB13092 Sea Glass Bee Vintage
Jessie Wide Back

NOTIONS/SUPPLIES

Bee Vintage Sew Simple Shapes®
10 Yards Large Cottage Vintage Trim
¾ Yard Large Beehive Vintage Trim
Seams Sew Easy Guide®
Easy Trace Light Box®
Lori Holt Design Board(s)
¼" Clover Bias Tape Makers
Cute Cuts Cutting Rulers®
Cute Cuts Cutting Mats®
Trim It Rulers® used: 10 ½"
Clover #7803 Point 2 Point Turner
Lori Holt Applique Pretty Pins™
Lori Holt's Assorted Cute Little Buttons
Lori Holt 10" Precut Sew-In Interfacing
Sue Daley Appliqué glue
DMC Floss for Embroidery

CUTTING INSTRUCTIONS



C13071 Cloud Bee Vintage Carol (10" square)
Cut (1) 3" x 5" rectangle use P-13 for dahlia block



C13072 Lettuce Bee Vintage Sarah Jane (10" square)
Cut (1) 3" x 5" rectangle use P-13 for dahlia block



C13073 Tea Dye Bee Vintage Nettie (10" square)
Cut (1) 3" x 5" rectangle use P-13 for dahlia block



C13075 Sea Glass Bee Vintage Elaine (10" square)
Cut (1) 5" x 5" square use P-36 for Sunbonnet Sue block
Cut (1) 4 ¼" x 4 ¼" square use P-12 for Spring basket block
Cut (1) 4" x 4" square use P-61 for songbird block

Bee Vintage Sew Along Guide

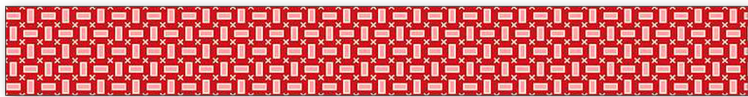


C13076 Melon Bee Vintage Gladys (10" square)

Cut (1) 7" x 4 1/2" rectangle use P-1 for tulip pot block

Cut (1) 3" x 5" rectangle use P-13 for Dahlia block

Cut (1) 2" x 2" square use P-63 for Spring basket block



C13077 Red Bee Vintage Tola (10" square)

Cut (4) 2" x 2 3/4" rectangles use P-56 for cottage block



C13079 Plum Bee Vintage Cornelia (10" square)

Cut (1) 5 1/2" x 5 1/2" square use P-7 for corsage block



C13079 Teal Bee Vintage Cornelia (10" square)

Cut (1) 4 3/4" x 8 1/2" rectangle use P-20 for songbird block



C13080 Alpine Bee Vintage Hazel (10" square)

Cut (1) 4 1/4" x 9" rectangle use P-3 for umbrella block

Cut (1) 3" x 5" rectangle use P-13 for Dahlia block

Cut (1) 2" x 2 3/4" rectangle use P-56 for umbrella block



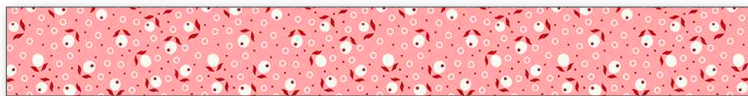
C13080 Taffy Bee Vintage Hazel (10" square)

Cut (1) 4 1/2" x 7 1/4" rectangle use P-22 for butterfly block



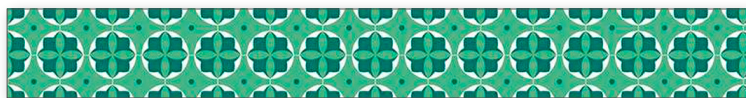
C13083 Pewter Bee Vintage Isabelle (10" square)

Cut (1) 9 3/4" x 5 1/2" rectangle use P-53 for cottage block



C13086 Coral Bee Vintage Suzanne (10" square)

Cut (1) 8 1/2" x 6" rectangle P-52 for cottage block



C13087 Alpine Bee Vintage Doris (10" square)

Cut (1) 10" x 10" square for P-33 for maple leaf block



C13087 Coral Bee Vintage Doris (10" square)

Cut (1) 7 3/4" x 8 1/2" rectangle use P-2 for strawberry block



C13088 Cottage Bee Vintage Mae (10" square)

Cut (4) 3 1/2" x 3 1/2" squares use P-9 for daisy chain block



C13089 Beehive Bee Vintage Lizzie (10" square)

Cut (1) 3" x 5" rectangle use P-13 for dahlia block

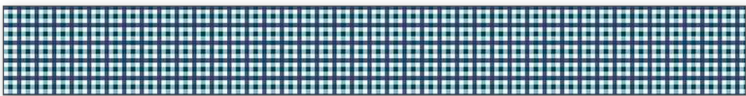
Cut (1) 2 1/2" x 3 1/2" rectangle use P-55 for cottage block



C12025 Barn Red Bee Plaids Harvest (10" square)

Cut (4) 4" x 4" squares use P-10 for Pennsylvania Dutch block

Cut (1) 2" x 2" square use P-63 for Spring basket block



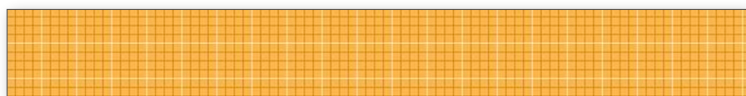
C12025 Denim Bee Plaids Harvest (10" square)

Cut (2) 2 1/2" x 2 1/2" squares use P-37 for Overall Bill block



C12026 Raisin Bee Plaids October (10" square)

Cut (1) 5 3/4" x 2 1/4" rectangle use P-48 for butterfly block



C12027 Daisy Bee Plaids Hayride (10" square)

Cut (1) 3 1/2" x 4 1/2" rectangle use P-14 for cherries block

Cut (1) 5/8" x 4" rectangle to make 1/4" Straight Bias for songbird block

Cut (4) 2 1/4" x 2 1/4" squares use P-64 for daisy chain block

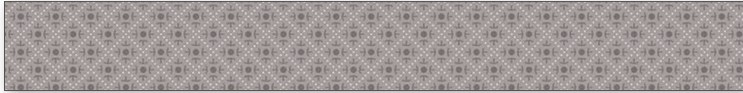
Bee Vintage Sew Along Guide



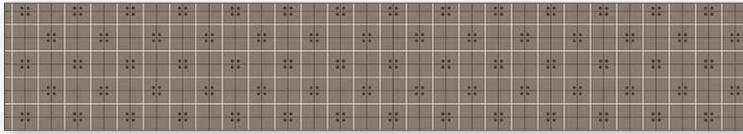
C12028 Denim Bee Plaids Barn Dance (10" square)
Cut (1) 5 ¼" x 7" rectangle use P-41 for Overall Bill block
Cut (1) 2" x 2" square use P-63 for Spring basket block



C12029 Granny Apple Bee Plaids Homemade (10" square)
Cut (1) 7 ½" x 3 ½" rectangle use P-11 for strawberry block
Cut (2) 2 ½" x 4" rectangles use P-28 for flower block
Cut (5) 1 ¾" x 2 ¾" rectangles use P-30 for daisy chain and songbird blocks



C12030 Gray Bee Plaids Bushel (10" square)
Cut (2) 2" x 2 ½" rectangles use P-40 for Sunbonnet Sue block
Cut (1) 2" x 3 ½" rectangle use P-39 for Overall Bill block



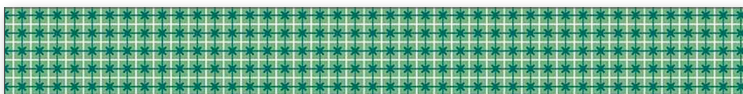
C12031 Pebble Bee Plaids Cider (10" square)
Cut (1) ⅝" x 10" strip to make ¼" Straight Bias for Overall Bill block



C12032 Frosting Bee Plaids Cobbler (10" square)
Cut (2) 4" x 5" rectangles use P-25 for kitty block



C12035 Daisy Bee Plaids Sunflower (10" square)
Cut (1) 3 ½" x 4 ½" rectangle use P-14 for strawberry block
Cut (2) 2" x 2" squares use P-63 for flower and Pennsylvania Dutch blocks



C12036 Alpine Bee Plaids Sweater (10" square)
Cut (3) 3 ½" x 2 ½" rectangles use P-57 for cottage block
Cut (1) 3 ¼" x 3 ¼" square use P-62 for dahlia block



C6401 Red Bee Basics Heart (10" square)
Cut (1) 4 ½" x 4 ½" square use P-60 for cherries block



C6403 Cottage Bee Basics Tiny Daisy (10" square)
Cut (1) 2 ¼" x 2 ¼" square use P-64 for cherries block



C6403 Pebble Bee Basics Tiny Daisy (10" square)
Cut (1) 2" x 4" rectangle use P-54 for cottage block



C6403 Red Bee Basics Tiny Daisy (10" square)
Cut (3) 3" x 3" squares use P-8 for tulip pot block



C6404 Nutmeg Bee Basics Blossoms (10" square)
Cut (3) 2" x 4" rectangles use P-32 for cherries, maple leaf, and apple blocks
Cut (1) ⅝" x 10" strip to make ¼" Straight Bias for cherries block
Cut (1) ⅝" x 6" strip to make ¼" Straight Bias for songbird block



C6405 Coral Bee Basics Polka Dot (10" square)
Cut (1) 4 ¼" x 4 ¼" square use P-12 for Spring basket block
Cut (2) 3 ½" x 5" rectangles use P-21 for kitty block
Cut (1) 2" x 3 ½" rectangle use P-18 for kitty block
Cut (1) 2 ¼" x 2 ¼" square use P-64 for strawberry block



C6409 Cayenne Bee Basics Stitched Flower (10" square)
Cut (1) 4 ½" x 4 ½" square use P-60 for cherries block
Cut (1) 5" x 4" rectangle use P-44 for Overall Bill block
Cut (2) 2" x 4" rectangles use P-38 for Overall Bill Block

Bee Vintage Sew Along Guide



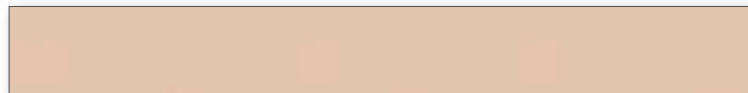
C745 Jazzberry Jam Bee Cross Stitch (10" square)

Cut (1) 3" x 3" square use P-8 for teapot block



C745 Raisin Bee Cross Stitch (10" square)

Cut (2) 2" x 2 1/2" rectangles use P-40 for Overall Bill block



C120 Beach Confetti Cottons (10" square)

Cut (4) 1 1/2" x 2" rectangles use P-38 for Sunbonnet Sue and Overall Bill blocks



C13070 Red Bee Vintage Mildred (Fat 1/8)

Cut (1) 6" x 12" rectangle use P-50 for umbrella block

Cut (1) 3" x 5" rectangle use P-13 for Dahlia block



C13075 Tea Rose Bee Vintage Elaine (Fat 1/8)

Cut (1) 5 1/2" x 5 1/2" square use P-6 for teapot block

Cut (1) 3" x 5" rectangle use P-47 for teapot block

Cut (1) 2" x 5" rectangle use P-46 for teapot block

Cut (1) 2" x 6" rectangle use P-45 for teapot block

Cut (1) 3" x 5" rectangle use P-13 for Dahlia block



C13076 Cottage Bee Vintage Gladys (Fat 1/8 yard)

Cut (1) 3" x 4 1/4" rectangle use P-24 for Scottie dog block

Cut (2) 1 1/2" x 3" rectangles use P-31 for Scottie dog block

Cut (1) 3 1/4" x 3 1/4" square use P-62 for flower block

Cut (1) 3" x 5" rectangle use P-13 for Dahlia block

Cut (4) 2 1/2" x 4" rectangles use P-28 for Pennsylvania Dutch block



C13081 Sea Glass Bee Vintage Alice (Fat 1/8)

Cut (2) 3 1/2" x 6 1/2" rectangles use P-19 for songbird block

Cut (1) 3" x 5" rectangle use P-13 for Dahlia block

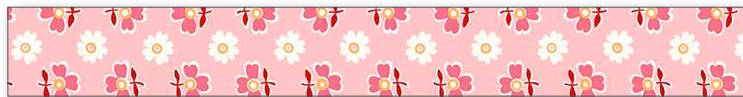


C13081 Taffy Bee Vintage Alice (Fat 1/8)

Cut (2) 5" x 6 1/2" rectangles use P-49 for butterfly block

Cut (1) 4 1/4" x 4 1/4" square use P-12 for Spring basket block

Cut (1) 3" x 5" rectangle use P-13 for Dahlia block



C13082 Frosting Bee Vintage Mable (Fat 1/8)

Cut (1) 7" x 7" square use P-43 for teapot block

Cut (1) 5 3/4" x 5" rectangle use P-35 for Sunbonnet Sue block



C13085 Tea Rose Bee Vintage Lula (Fat 1/8)

Cut (1) 6" x 7 1/4" rectangle use P-34 for Sunbonnet Sue block

Cut (4) 3 1/2" x 4" rectangles use P-5 for flower block

Cut (2) 2" x 4" rectangles use P-38 for Sunbonnet Sue block



C13086 Lettuce Bee Vintage Suzanne (Fat 1/8)

Cut (1) 9 1/2" x 8 1/2" rectangle use P-51 for apple block

Cut (6) 1 3/4" x 2 3/4" rectangles use P-30 for Sunbonnet Sue, daisy chain, and songbird blocks

Cut (5) 2" x 4" rectangles use P-29 for cherries and corsage blocks

Cut (2) 1 1/2" x 3" rectangles use P-27 for tulip pot block



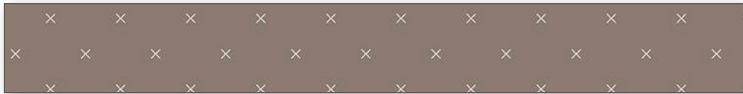
C13088 Daisy Bee Vintage Mae (Fat 1/8)

Cut (1) 4 1/4" x 9" rectangle use P-3 for Spring basket block

Cut (1) 7 1/2" x 6" rectangle use P-4 for Spring basket block

Cut (2) 3 1/4" x 3 1/4" squares use P-62 for Sunbonnet Sue and corsage blocks

Cut (1) 6 1/2" x 4" rectangle use P-42 for Overall Bill block



C745 Pebble Bee Cross Stitch (Fat 1/8)

Cut (1) 6" x 7" rectangle use P-16 for kitty block

Cut (1) 5 1/2" x 5" rectangle use P-15 for kitty block

Bee Vintage Sew Along Guide



C6400 Raisin Bee Basics Gingham (Fat Quarter)

Cut (1) 10" x 9 ¾" rectangle use P-23 for Scottie dog block
Cut (1) 4 ½" x 6 ½" rectangle use P-17 for kitty block
Cut (1) 4 ¼" x 9" rectangle use P-3 for kitty block



C13070 Blue Bee Vintage Mildred (2 yards)

Cut (6) 8 ½" x WOF strips. Sew together then subcut:
(2) 8 ½" x 68 ½" rectangles for side borders
(2) 8 ½" x 55 ½" rectangles for top/bottom borders



C13077 Denim Blue Bee Vintage Tola (1 ¾ yards)

Cut (13) 1 ½" x WOF strips for sashing
Cut (9) 2 ½" x WOF strips; set aside for binding



C13078 Blue Bee Vintage Leah (1 ½ yards)

Cut (26) 1 ½" x WOF strips for sashing
Cut (1) 3" x 5" rectangle use P-13 for Dahlia block



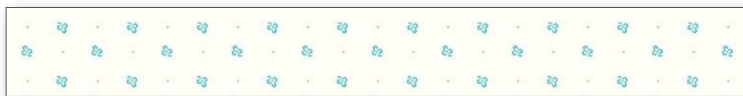
C13085 Denim Bee Vintage Lula (¾ yard)

Cut (1) 8 ½" x WOF strip, subcut:
(4) 8 ½" x 8 ½" squares for border cornerstones
Cut (3) 3 ½" x WOF strips, subcut:
(30) 3 ½" x 3 ½" squares for cornerstones



C12030 Green Bee Plaids Bushel (½ yard)

Cut (1) ⅝" x WOF strip to make ¼" Straight Bias
Cut (1) 8 ¾" x 8 ¾" square use P-58 for daisy chain block
Cut (4) 3" x 5" rectangles use P-65 for Pennsylvania Dutch block
Cut (6) 2" x 4" rectangles use P-29 for cherries, apple, and corsage blocks
Cut (2) 2 ¼" x 4 ½" rectangles use P-26 for large flower pot leaves
Cut (2) 2" x 4" rectangles use P-32 for strawberry and flower blocks
Cut (5) 1 ¾" x 2 ¾" rectangles use P-30 for daisy chain and songbird blocks
Cut (3) 1 ½" x 3" rectangles use P-31 for Spring basket block
Cut (2) 1 ½" x 3" rectangles use P-27 for teapot block



C9711 Cottage Bee Backgrounds Clover (2 ½ yards)

Cut (7) 12" x WOF strips, subcut:
(20) 12" x 12" squares for block background
(1) 7 ½" x 7 ½" square use P-59 for wreath center
(1) 3 ½" x 4" use P-5 for teapot handle



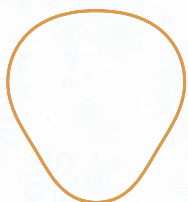
WB13092 Sea Glass Bee Vintage Jessie Wide Back
for backing (2 ½ yards)

Cutting Guide for Bee Vintage Sew Simple Shapes

Use when cutting sew-in interfacing
for the Bee Vintage Sew Along



P-1
7" x 4 1/2"
Cut 1



P-2
7 3/4" x 8 1/2"
Cut 1



P-3
4 1/4" x 9"
Cut 3



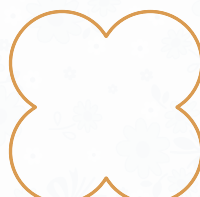
P-4
7 1/2" x 6"
Cut 1



P-5
3 1/2" x 4"
Cut 5



P-6
5 1/2" x 5 1/2"
Cut 1



P-7
5 1/2" x 5 1/2"
Cut 1



P-8
3" x 3"
Cut 4



P-9
3 1/2" x 3 1/2"
Cut 4



P-10
4" x 4"
Cut 4



P-11
7 1/2" x 3 1/2"
Cut 1



P-12
4 1/4" x 4 1/4"
Cut 3



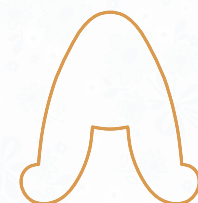
P-13
3" x 5"
Cut 12



P-14
3 1/2" x 4 1/2"
Cut 2



P-15
5 1/2" x 5"
Cut 1



P-16
6" x 7"
Cut 1

Cutting Guide for Bee Vintage Sew Simple Shapes

Use when cutting sew-in interfacing
for the Bee Vintage Sew Along



P-17
4 1/2" x 6 1/2"
Cut 1



P-18
2" x 3 1/2"
Cut 1



P-19
3 1/2" x 6 1/2"
Cut 2



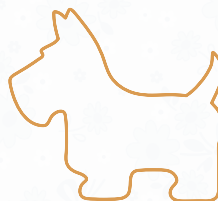
P-20
4 3/4" x 8 1/2"
Cut 1



P-21
3 1/2" x 5"
Cut 2



P-22
4 1/2" x 7 1/4"
Cut 1



P-23
10" x 9 3/4"
Cut 1



P-24
3" x 4 1/4"
Cut 1



P-25
4" x 5"
Cut 2



P-26
2 1/4" x 4 1/2"
Cut 2



P-27
1 1/2" x 3"
Cut 4



P-28
2 1/2" x 4"
Cut 6



P-29
2" x 4"
Cut 11



P-30
1 3/4" x 2 3/4"
Cut 16



P-31
1 1/2" x 3"
Cut 5



P-32
2" x 4"
Cut 5

Cutting Guide for Bee Vintage Sew Simple Shapes

Use when cutting sew-in interfacing
for the Bee Vintage Sew Along



P-33
10" x 10"
Cut 1



P-34
6" x 7 1/4"
Cut 1



P-35
5 3/4" x 5"
Cut 1



P-36
5" x 5"
Cut 1



P-37
2 1/2" x 2 1/2"
Cut 2



P-38
2" x 4"; Cut 4
1 1/2" x 2"; Cut 4



P-39
2" x 3 1/2"
Cut 1



P-40
2" x 2 1/2"
Cut 4



P-41
5 1/4" x 7"
Cut 1



P-42
6 1/2" x 4"
Cut 1



P-43
7" x 7"
Cut 1



P-44
5" x 4"
Cut 1



P-45
2" x 6"
Cut 1



P-46
2" x 5"
Cut 1



P-47
3" x 5"
Cut 1



P-48
5 3/4" x 2 1/4"
Cut 1

Cutting Guide for Bee Vintage Sew Simple Shapes

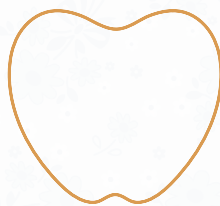
Use when cutting sew-in interfacing
for the Bee Vintage Sew Along



P-49
5" x 6 1/2"
Cut 2



P-50
10" x 10"
Cut 1



P-51
9 1/2" x 8 1/2"
Cut 1



P-52
8 1/2" x 6"
Cut 1



P-53
9 3/4" x 5 1/2"
Cut 1



P-54
2" x 4"
Cut 1



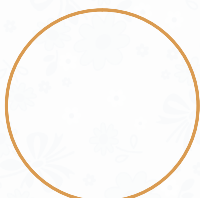
P-55
2 1/2" x 3 1/2"
Cut 1



P-56
2" x 2 3/4"
Cut 5



P-57
3 1/2" x 2 1/2"
Cut 3



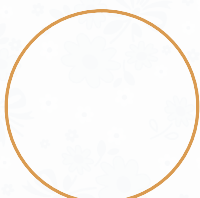
P-58
8 3/4" x 8 3/4"
Cut 1



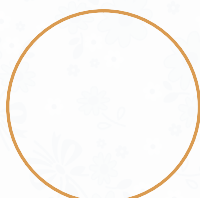
P-59
7 1/2" x 7 1/2"
Cut 1



P-60
4 1/2" x 4 1/2"
Cut 2



P-61
4" x 4"
Cut 1



P-62
3 1/4" x 3 1/4"
Cut 4



P-63
2" x 2"
Cut 5



P-64
2 1/4" x 2 1/4"
Cut 6

Cutting Guide for Bee Vintage Sew Simple Shapes

Use when cutting sew-in interfacing
for the Bee Vintage Sew Along



P-65
3" x 5"
Cut 4

For ¼"
Bias Tape Maker
...
Cut
⅝" Wide

DMC Embroidery Floss




DMC 3371 Floss
Butterfly Antenna
Kitty Whiskers
Fish Hook

DMC 841 Floss
Fishing Line

DMC 760 Floss
Kitty's Nose

*When sewing on buttons, use matching embroidery floss from your stash or matching thread.

Stay up-to-date on all Lori Holt
happenings and projects:

-  Visit Lori's Blog at BeInMyBonnetCo.blogspot.com
-  Subscribe to the Lori Holt YouTube channel
-  Follow her on Instagram at @beelori1

Enjoy and share your quilt using the hashtags
#beevintagesamplerquilt, #beeinmybonnet,
#rileyblakedesigns, and #iloverileyblake.

Bee Vintage Sew Along Guide

Bee Vintage Quilt Size 71" x 84"



Sewing the Sashing:

Sew a 1 ½" x WOF Blue Bee Vintage Leah strip to both long edges of a 1 ½" x WOF Denim Blue Bee Vintage Tola strip. Press. Strip set should measure 3 ½" x WOF. Repeat to make a total of 13 strip sets. Cut (49) 3 ½" x 10 ½" segments from the strip sets to make sashing strips. Sew (5) 3 ½" x 3 ½" Denim Bee Vintage Lula cornerstone squares and (4) pieced sashing strips together, then press. Make (6) horizontal sashing strips.

Sewing Blocks Together and Adding Borders:

The center of this quilt is arranged in rows with a pieced sashing strip placed between the blocks and on each end of the rows.

A horizontal sashing strip is placed between each of the rows and at the top and bottom of the quilt center.

On the following page you will see the diagram and some helpful measurements.

The measurements given are the UNFINISHED SIZE of each section shown.

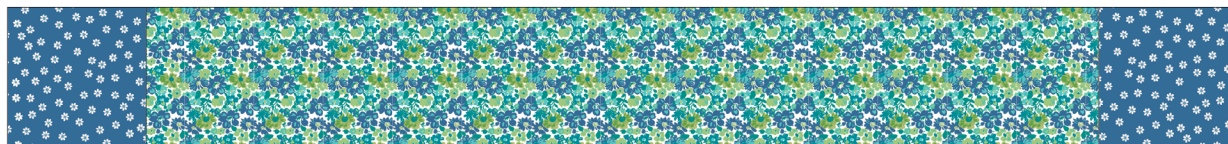
After sewing the quilt center together, add the Side Borders first, and then add the Top and Bottom Borders.

Quilt as desired and finish with Cottage Large Vintage Trim™ and Binding.

Enjoy your Bee Vintage Quilt!!

Bee Vintage Sew Along Guide

Border Layout for the Bee Vintage Quilt



↑ Top Pieced Border 8 ½" x 71 ½" (unfinished)



↑ Bottom Pieced Border 8 ½" x 71 ½" (unfinished)

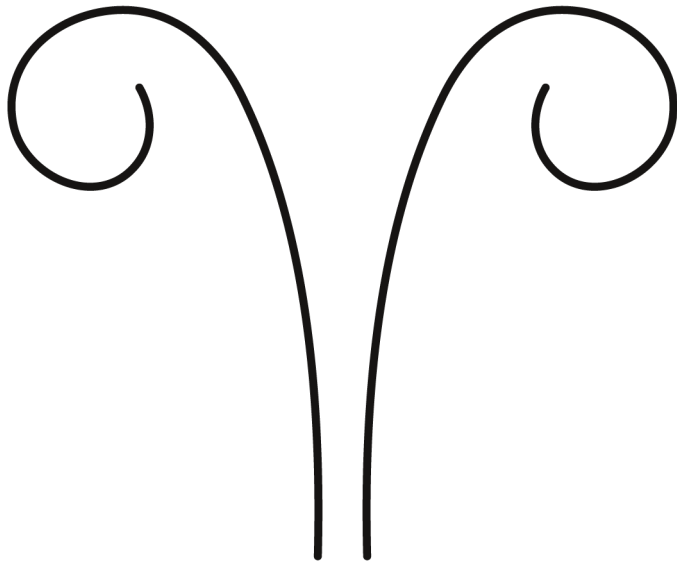
Bee Vintage Sew Along Guide

Embroidery Guide

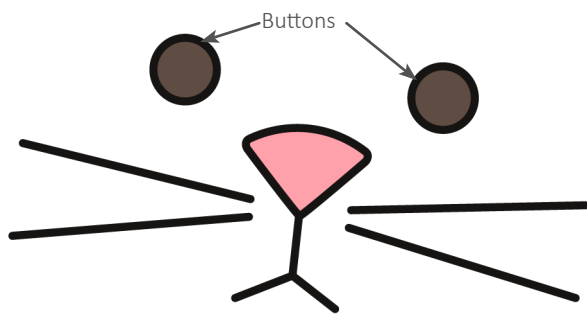
*Lori uses 3 strands of floss

This should
measure
1 inch.

*Tape these patterns onto Lori's Easy Trace™ Light Box. Trace lines directly onto fabric with a .05 mechanical pencil. Your embroidery will cover the pencil lines!



Butterfly Antenna



Cat



Fishing Line



Fishing Pole

