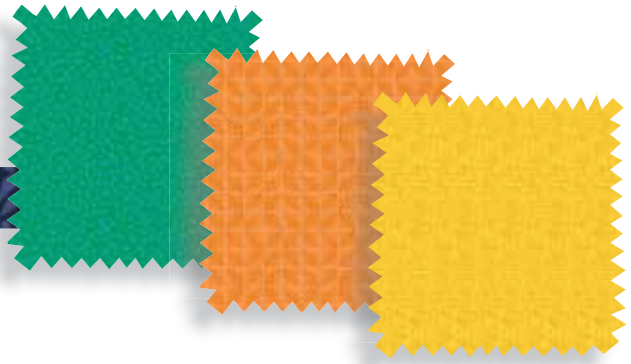


Whimsy

Stacks Quilt Design by Wendy Sheppard



Quilt size: approximately 76" x 76"

Featuring fabrics from
Whimsy by Heather Dutton
of Hang Tight Studio for P&B Textiles



P&B Textiles • pbtex.com • 800-351-9087 • 208 Clock Tower Square, Portsmouth, RI 02871

Whimsy

Fabric collection by Heather Dutton of Hang Tight Studio for P&B Textiles

Stacks quilt designed by Wendy Sheppard

Skill level: Advanced Beginner • Finished Quilt Size: approximately 76" x 76" • Finished Block Size: approximately 10" x 10"

Yardages:

Fabric A: **RAM9 743 W**2 3/4 yards
One 2 1/2" Strip Roll (50 skus)
Binding: **Whimsy fabric of choice**5/8 yards
Backing: **Whimsy fabric of choice**4 7/8 yards
OR 2 1/2 yards of 108"
Batting:84" x 84"

Cutting Instructions:

Please read all instructions carefully before beginning. Strips are cut across the width of fabric (perpendicular to selvages) unless otherwise stated. All seams are sewn with a 1/4" seam unless otherwise stated. Label all pieces.

From Fabric A:

1. Cut four 2 1/2" strips. Subcut forty-nine 2 1/2" squares. (Pieced Blocks)
2. Cut two 4 1/2" strips. Subcut forty-nine 1 1/2" x 4 1/2" rectangles. (Pieced Blocks)
3. Cut two 5 1/2" strips. Subcut forty-nine 1 1/2" x 5 1/2" rectangles. (Pieced Blocks)
4. Cut two 7 1/2" strips. Subcut forty-nine 1 1/2" x 7 1/2" rectangles. (Pieced Blocks)
5. Cut two 8 1/2" strips. Subcut forty-nine 1 1/2" x 8 1/2" rectangles. (Pieced Blocks)
6. Cut eight 3 1/2" strips. Piece strips and subcut two 3 1/2" x 70 1/2" and two 3 1/2" x 76 1/2" strips. (Outer Border)

From 2 1/2" Strip Roll: (49 skus)

1. From each strip: cut one 2 1/2" square; one 2 1/2" x 4 1/2", one 2 1/2" x 5 1/2", one 2 1/2" x 7 1/2", one 2 1/2" x 8 1/2" and one 2 1/2" x 10 1/2" rectangles. (Pieced Blocks)

From Binding

1. Cut eight 2 1/4" strips.

Piecing Instructions:

Pieced Block (10" finished)

1. Sew one 2 1/2" *print* square above one 2 1/2" A square, followed by one 2 1/2" x 4 1/2" *print* rectangle to the left of the same A square (Figure 1).
2. Sew one 1 1/2" x 4 1/2" A rectangle to the top of previously sewn unit, followed by one 1 1/2" x 5 1/2" A rectangle to the left of the same unit (Figure 2).
3. Sew one 2 1/2" x 5 1/2" *print* rectangle to the previously sewn unit, followed by one 2 1/2" x 7 1/2" *print* rectangle to the left of the same unit (Figure 3).

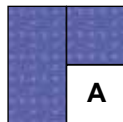


Figure 1

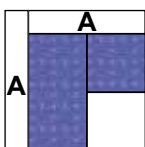


Figure 2

4. Sew one 1 1/2" x 7 1/2" A rectangle to the top of previously sewn unit, followed by one 1 1/2" x 8 1/2" A rectangle to the left of same unit (Figure 4).
5. Sew one 2 1/2" x 8 1/2" *print* rectangle to the top of previously sewn unit, followed by one 2 1/2" x 10 1/2" *print* rectangle to the left of the same unit to complete one block. Block measures 10 1/2" x 10 1/2" unfinished (Figure 5).
6. Make a total of forty-nine blocks.

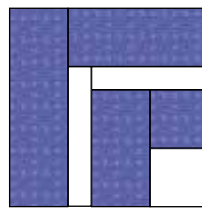


Figure 3

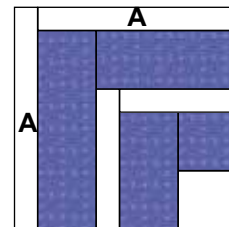


Figure 4

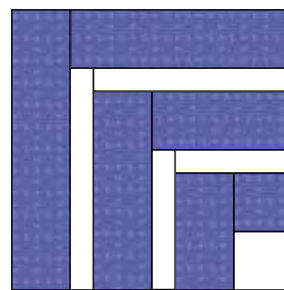


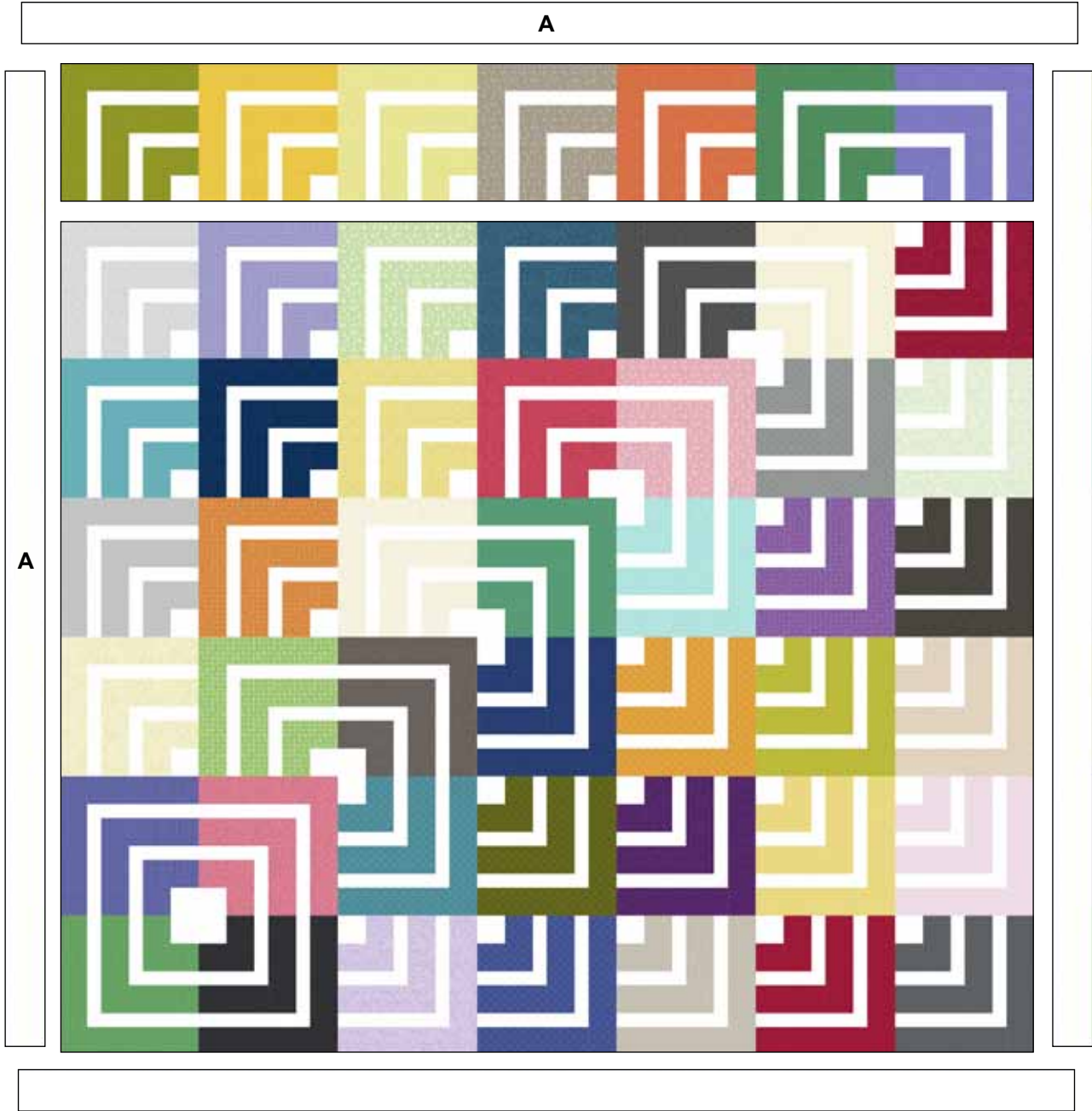
Figure 5 Make 49 blocks.

Quilt Assembly:

1. Pieced rows. Refer to quilt image/diagram for block orientation guide, arrange and sew together seven pieced blocks to make a pieced row. Make a total of seven pieced rows. Quilters may refer to quilt image for fabric placement guide, or select their choice of colors for each pieced row. Row 1 is shown below (Figure 6).
2. Sew together pieced rows to complete quilt center.
3. Outer border. Sew two 3 1/2" x 70 1/2" A strips to the left and right sides of quilt center, followed by two 3 1/2" x 76 1/2" A strips to the top and bottom of quilt center to complete quilt top.

Finishing:

1. Prepare backing and press well. Trim to 84" x 84".
2. Layer quilt top, batting, and backing. Baste layers together.
3. Quilt as desired.
4. Trim layers even with quilt top squaring corners.
5. Join 2 1/4" binding strips with diagonal seams. Press seams open. Attach binding to quilt using your favorite method.
6. Make a label and sew to the back of the quilt.



Quilt diagram

Whimsy

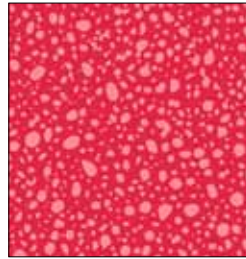
Fabric Collection by Heather Dutton
of Hang Tight Studio for P&B Textiles



WHIM 4407 DR



WHIM 4405 R



WHIM 4415 R



WHIM 4411 P



WHIM 4410 P



WHIM 4413 LP



WHIM 4404 J



WHIM 4403 O



WHIM 4406 O



WHIM 4409 AU



WHIM 4414 YY



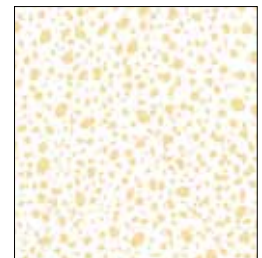
WHIM 4413 Y



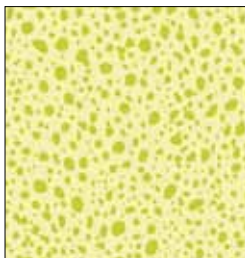
WHIM 4403 Y



WHIM 4412 Y



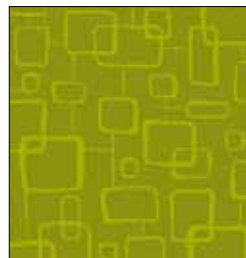
WHIM 4415 LY



WHIM 4415 LA



WHIM 4413 A



WHIM 4411 A



WHIM 4409 A



WHIM 4404 E



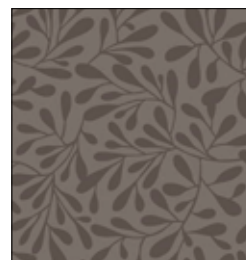
WHIM 4405 NE



WHIM 4413 GR



WHIM 4410 DS



WHIM 4403 DS



WHIM 4411 SZ



Whimsy

Fabric Collection by Heather Dutton
of Hang Tight Studio for P&B Textiles



WHIM 4403 VV



WHIM 4406 C



WHIM 4407 L



WHIM 4408 BV



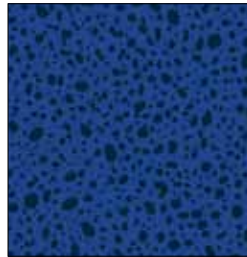
WHIM 4412 BV



WHIM 4404 B



WHIM 4409 BV



WHIM 4415 BB



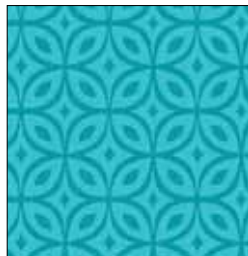
WHIM 4403 BN



WHIM 4412 DT



WHIM 4409 T



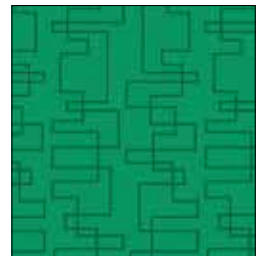
WHIM 4413 T



WHIM 4411 LT



WHIM 4405 G



WHIM 4414 GG



WHIM 4408 G



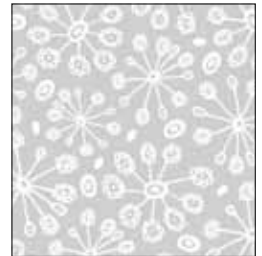
WHIM 4406 G



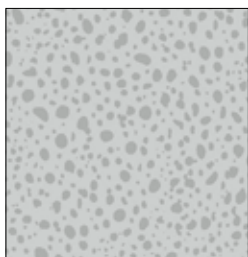
WHIM 4410 G



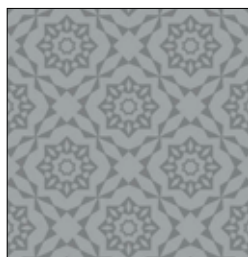
WHIM 4407 LG



WHIM 4405 LS



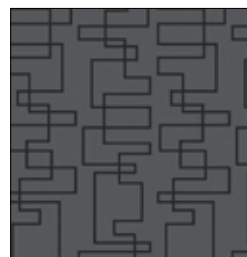
WHIM 4415 S



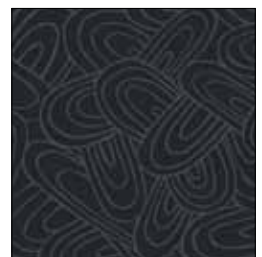
WHIM 4409 S



WHIM 4408 DS*



WHIM 4414 KS



WHIM 4412 KS

