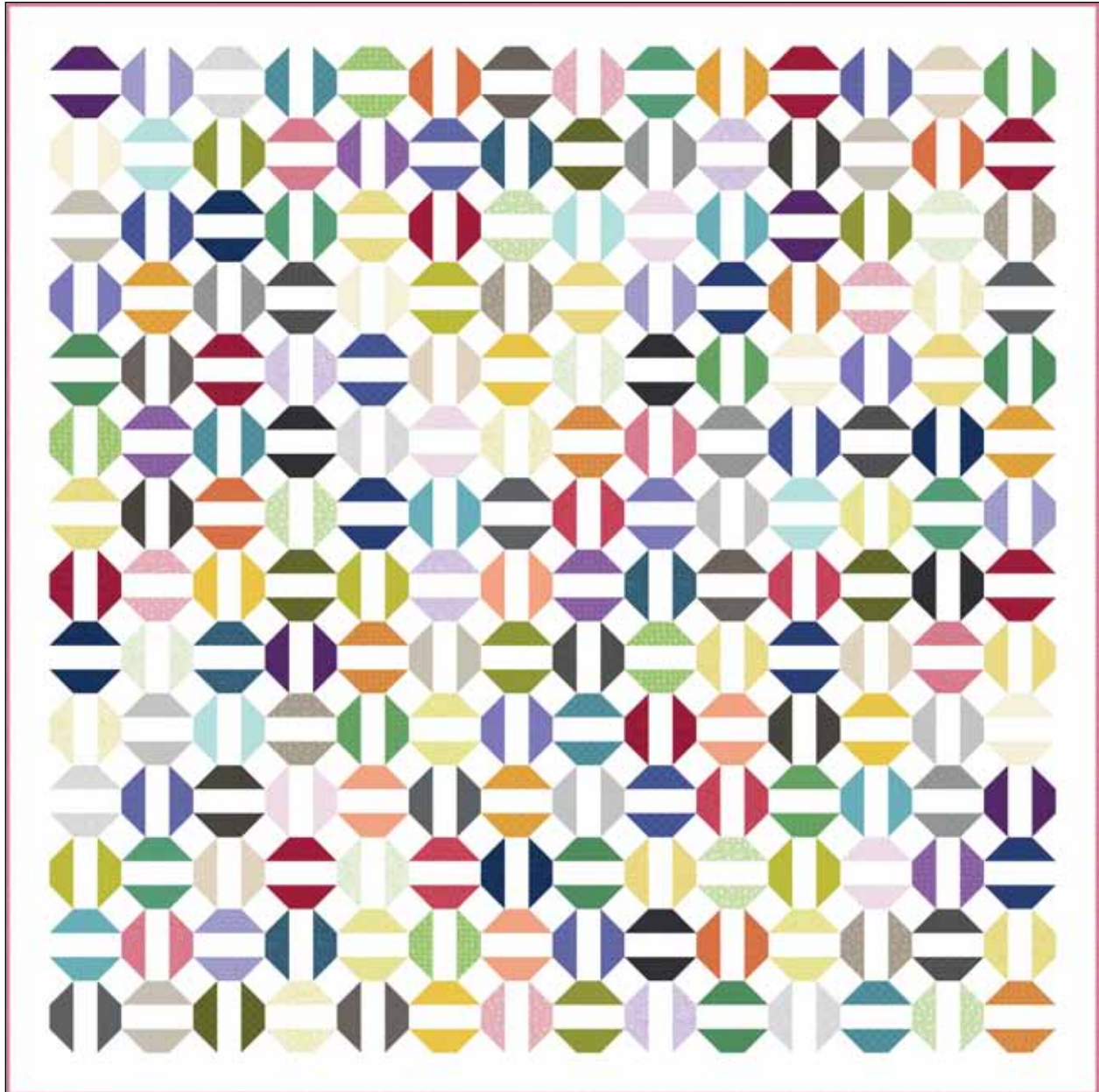
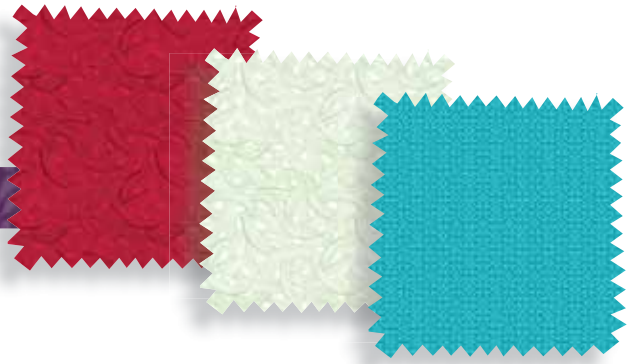


Whimsy

Roly Poly Quilt Design by Wendy Sheppard



Quilt size: approximately 68" x 68"

Featuring fabrics from
Whimsy by Heather Dutton
of Hang Tight Studio for P&B Textiles



P&B Textiles • pbtex.com • 800-351-9087 • 208 Clock Tower Square, Portsmouth, RI 02871

Whimsy

Fabric collection by Heather Dutton of Hang Tight Studio for P&B Textiles

Roly Poly Quilt designed by Wendy Sheppard

Skill level: Advanced Beginner • Finished Quilt Size: approximately 68" x 68" • Finished Block Size: approximately 4 1/2" x 4 1/2"

Yardages:

Fabric A: **RAM9 743 W**4 3/8 yards

Fabric B: **Whimsy fabric of choice**.....5/8 yard

One 10" square pack (50 skus)

Backing: **Whimsy fabric of choice**4 3/8 yards

Batting:76" x 76"

Cutting Instructions:

Please read all instructions carefully before beginning. Strips are cut across the width of fabric (perpendicular to selvages) unless otherwise stated. All seams are sewn with a 1/4" seam unless otherwise stated. Label all pieces.

From Fabric A:

1. Cut forty 2" strips. Subcut (784) 2" squares. (Pieced Blocks)
2. Cut ten 5" strips. Subcut (196) 2" x 5" rectangles. (Pieced Blocks)
3. Cut seven 3" strips. Piece strips and subcut two 3" x 63 1/2" and two 3" x 68 1/2" strips. (Outer Border)

From Fabric B:

1. Cut eight 2 1/4" strips. (Binding)

From 10" Squares: (49 skus used)

1. From each 10" print square, subcut four 5" square. From each 5" square, subcut two 2" x 5" rectangles for a total of (392) 2" x 5" rectangles. (Pieced Blocks)

Piecing Instructions:

Pieced Block (4 1/2" finished)

1. Draw a diagonal line on the wrong side of one 2" A square. Place square, right sides together, at a corner of one 2" x 5" print rectangle. Sew on drawn line. Trim 1/4" away from sewn line. Open and press to reveal background corner triangle. Repeat with another 2" A square at the opposite corner of the same print rectangle to make one unit (Figure 1). Repeat to make two units.



Figure 1

2. Sew both units made in step 1 to the opposite long sides of one 2" x 5" A rectangle to complete one block. Block measures 5" x 5" unfinished. Make a total of (196) blocks. (Figure 2).

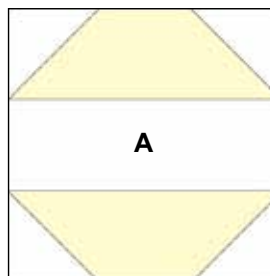


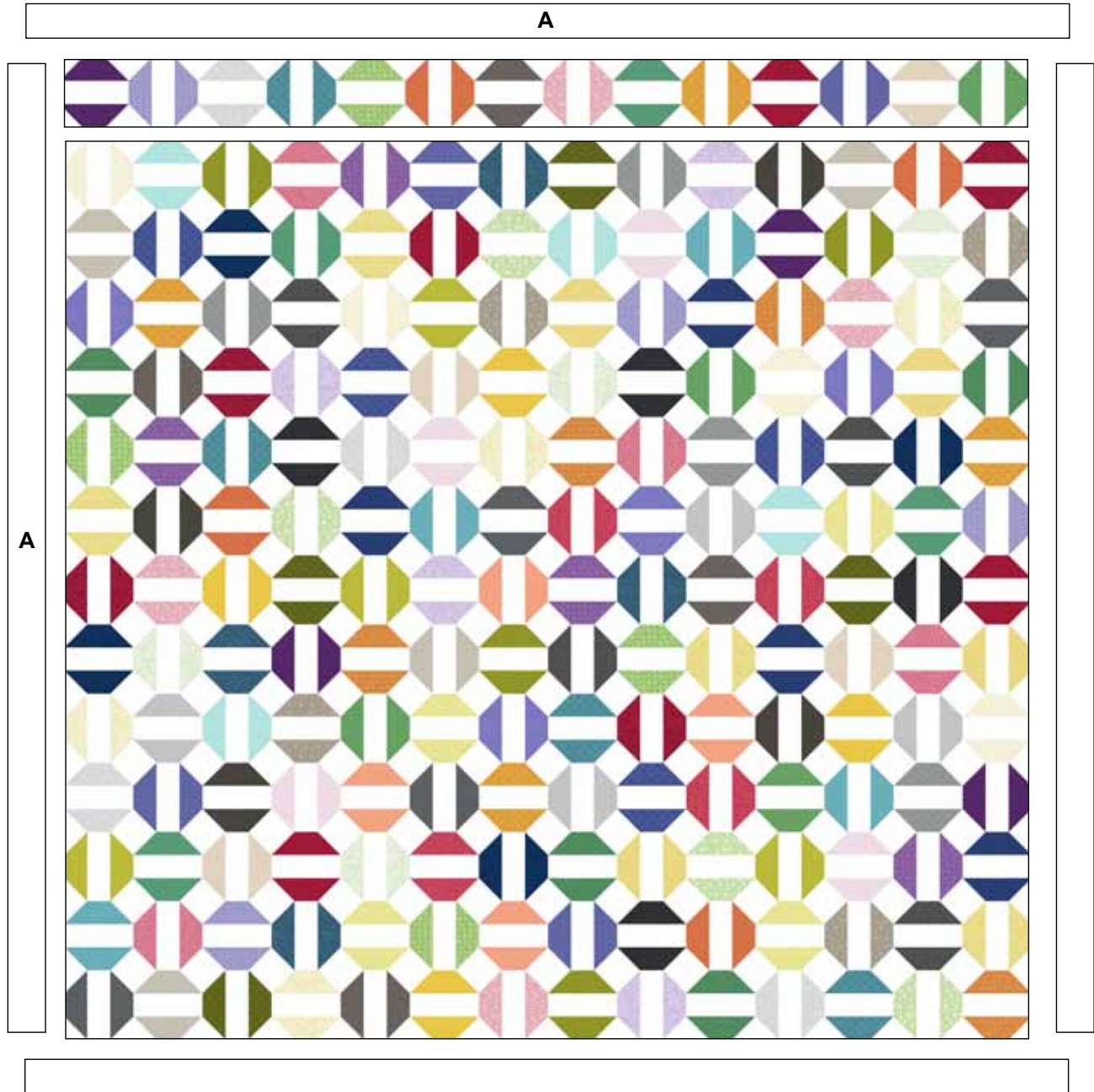
Figure 2

Quilt Assembly:

1. Pieced rows. Refer to quilt image/diagram for block orientation guide, arrange and sew together fourteen pieced blocks to make a pieced row. Make a total of fourteen pieced rows. Quilters may refer to quilt image for fabric placement guide, or select their choice of colors for each pieced row.
2. Sew together pieced rows to complete quilt center.
3. Outer border. Sew two 3" x 63 1/2" A strips to the left and right sides of quilt center, followed by two 3" x 68 1/2" A strips to the top and bottom of quilt center to complete quilt top (Quilt Diagram).

Finishing:

1. Prepare backing and press well. Trim to 76" x 76".
2. Layer quilt top, batting, and backing. Baste layers together.
3. Quilt as desired.
4. Trim layers even with quilt top squaring corners.
5. Join 2 1/4" B binding strips with diagonal seams. Press seams open. Attach binding to quilt using your favorite method.
6. Make a label and sew to the back of the quilt.



Quilt diagram

Whimsy

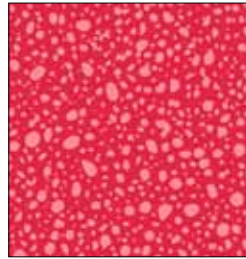
Fabric Collection by Heather Dutton
of Hang Tight Studio for P&B Textiles



WHIM 4407 DR



WHIM 4405 R



WHIM 4415 R



WHIM 4411 P



WHIM 4410 P



WHIM 4413 LP



WHIM 4404 J



WHIM 4403 O



WHIM 4406 O



WHIM 4409 AU



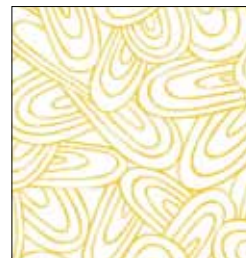
WHIM 4414 YY



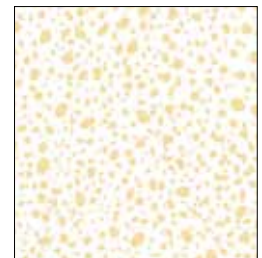
WHIM 4413 Y



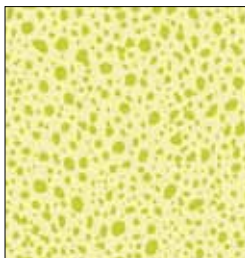
WHIM 4403 Y



WHIM 4412 Y



WHIM 4415 LY



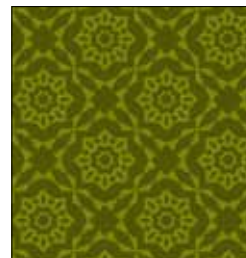
WHIM 4415 LA



WHIM 4413 A



WHIM 4411 A



WHIM 4409 A



WHIM 4404 E



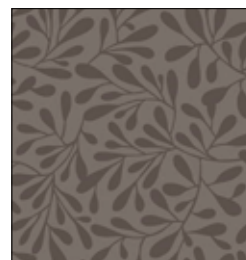
WHIM 4405 NE



WHIM 4413 GR



WHIM 4410 DS



WHIM 4403 DS



WHIM 4411 SZ



Whimsy

Fabric Collection by Heather Dutton
of Hang Tight Studio for P&B Textiles



WHIM 4403 VV



WHIM 4406 C



WHIM 4407 L



WHIM 4408 BV



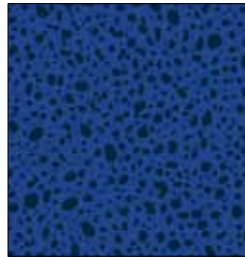
WHIM 4412 BV



WHIM 4404 B



WHIM 4409 BV



WHIM 4415 BB



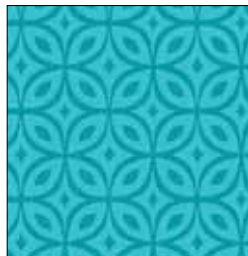
WHIM 4403 BN



WHIM 4412 DT



WHIM 4409 T



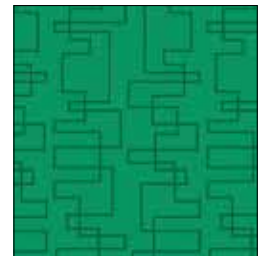
WHIM 4413 T



WHIM 4411 LT



WHIM 4405 G



WHIM 4414 GG



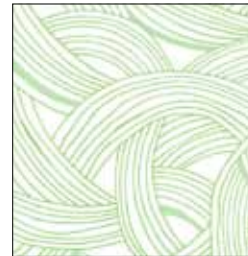
WHIM 4408 G



WHIM 4406 G



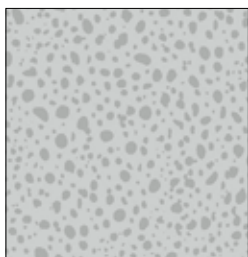
WHIM 4410 G



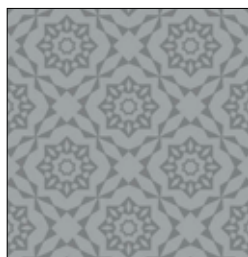
WHIM 4407 LG



WHIM 4405 LS



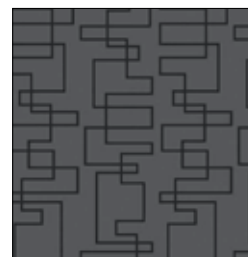
WHIM 4415 S



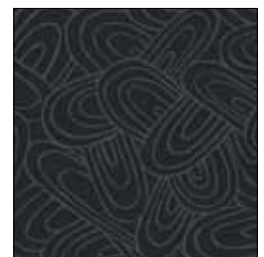
WHIM 4409 S



WHIM 4408 DS*



WHIM 4414 KS



WHIM 4412 KS

