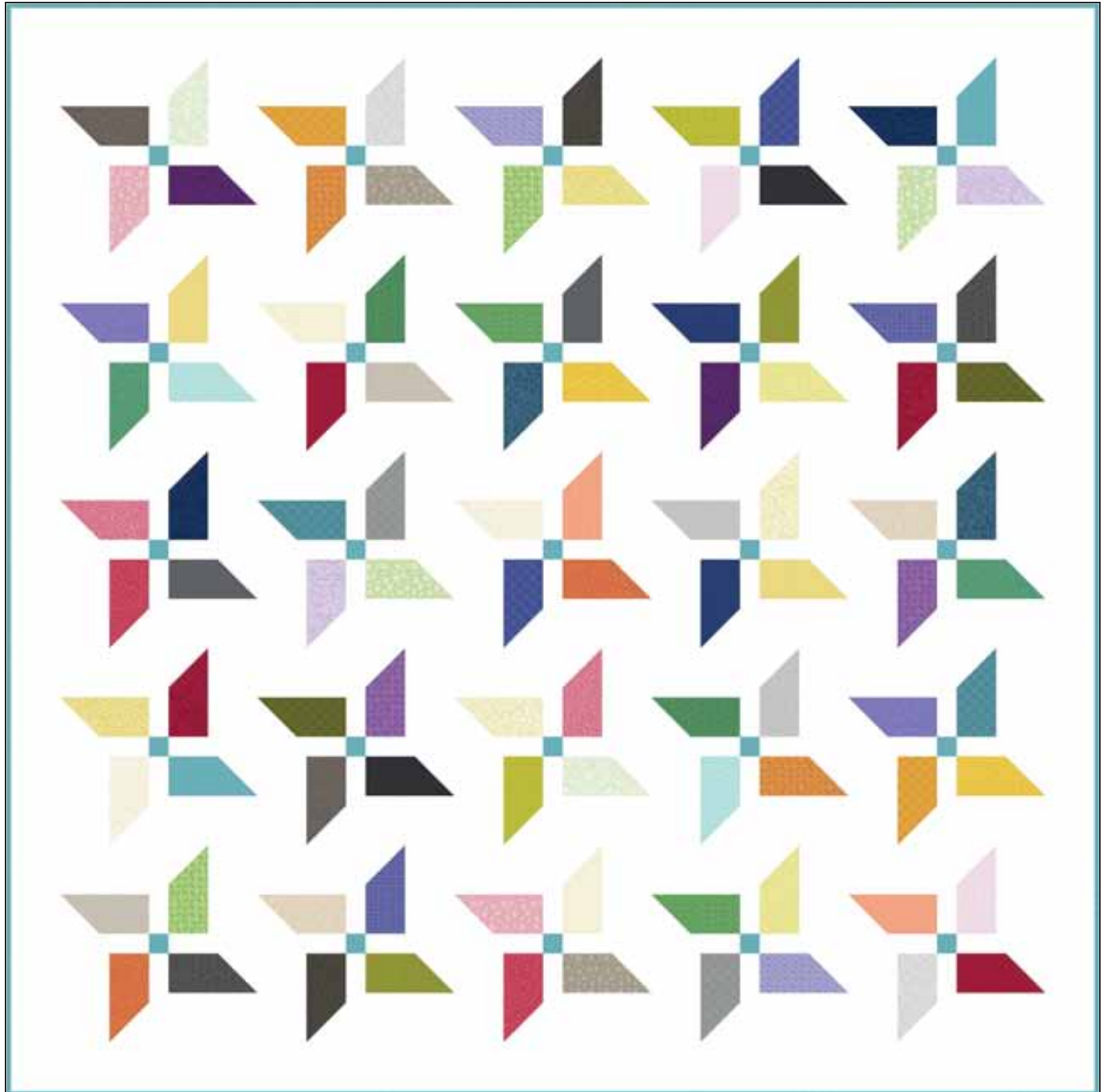
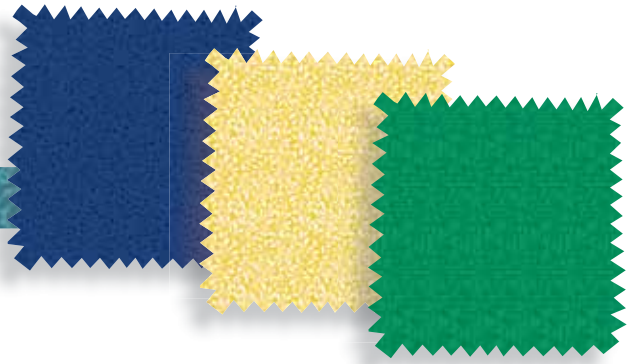


Whimsy

Pirouette Quilt Design by Wendy Sheppard



Quilt size: approximately 55" x 55"

*Featuring fabrics from
Whimsy by Heather Dutton
of Hang Tight Studio for P&B Textiles*



P&B Textiles • pbtex.com • 800-351-9087 • 208 Clock Tower Square, Portsmouth, RI 02871

Whimsy

Fabric collection by Heather Dutton of Hang Tight Studio for P&B Textiles

Pirouette Quilt designed by Wendy Sheppard

Skill level: Advanced Beginner • Finished Quilt Size: approximately 55" x 55" • Finished Block Size: approximately 10" x 10"

Yardages:

Fabric A: **RAM9 743 W**2 7/8 yards

Fabric B: **WHIM 4413 T**5/8 yard

One 5" square pack (50 skus)

Backing: **Whimsy fabric of choice**3 5/8 yards

Batting:63" x 63"

Cutting Instructions:

Please read all instructions carefully before beginning. Strips are cut across the width of fabric (perpendicular to selvages) unless otherwise stated. All seams are sewn with a 1/4" seam unless otherwise stated. Label all pieces.

From Fabric A:

1. Cut seven 2 1/2" strips. Subcut one hundred 2 1/2" squares. (Pieced Blocks)
2. Cut eleven 5" strips. Subcut one hundred 3" x 5" and one hundred 1 1/2" x 5" rectangles. (Pieced Blocks)
3. Cut six 3" strips. Piece strips and subcut two 3" x 50 1/2" and two 3" x 55 1/2" strips. (Outer Border)

From Fabric B:

1. Cut one 1 1/2" strip. Subcut twenty-five 1 1/2" squares. (Pieced Blocks)
2. Cut seven 2 1/4" strips. (Binding)

From 5" Squares: (50 skus)

1. From each 5" print square, subcut two 2 1/2" x 5" rectangles for a total of one hundred 2 1/2" x 5" rectangles.

Piecing Instructions:

Pieced Block (10" finished)

NOTE: Feel free to choose any four 5" squares to construct each block.

1. Draw a diagonal line on the wrong side of one 2 1/2" A square. Place square, at a corner of one 2 1/2" x 5" print rectangle. Sew on drawn line. Trim 1/4" away from sewn line. Open and press to reveal A corner triangle (Figure 1).
2. Sew to the right of previously sewn unit one 3" x 5" A rectangle to complete one block quadrant. Quadrant measures 5" x 5" unfinished. (Figure 2).



Figure 1

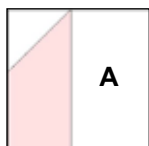


Figure 2

3. Repeat to make three additional quadrants using three 2 1/2" x 5" rectangles from three different prints.
4. Sew two units made in step 2 to the opposite long sides of one 1 1/2" x 5" A rectangle to make a row unit, as shown. Make a total of two row units. (Figure 3).

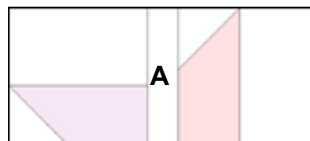


Figure 3

5. Sew two 1 1/2" x 5" A rectangles to the opposite sides of one 1 1/2" B square to make a row unit (Figure 4).

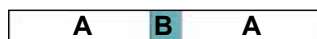


Figure 4

6. Sew together row units to complete one pieced block (Figure 5). Make a total of twenty-five blocks.

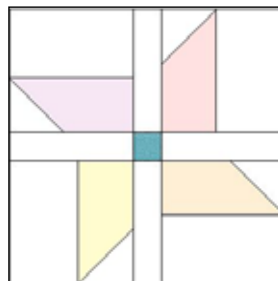


Figure 5

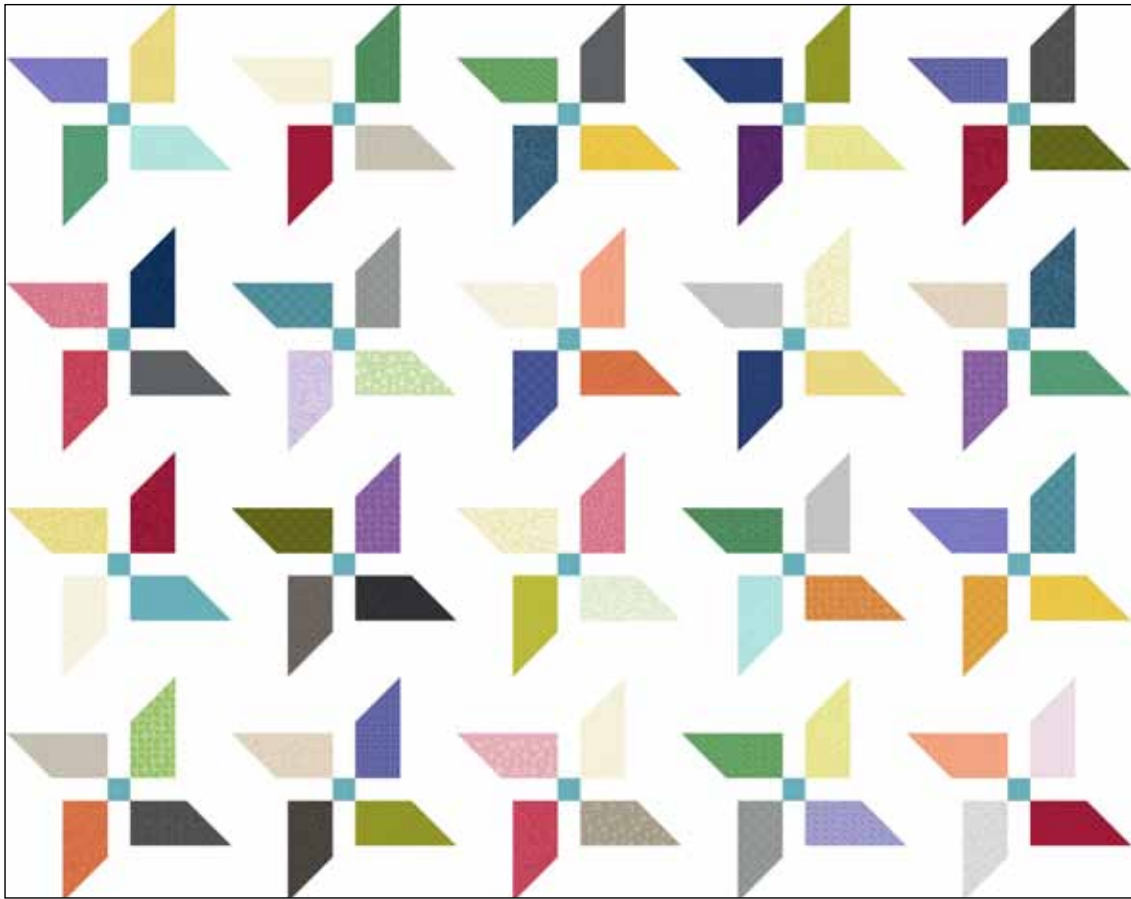
Quilt Assembly:

1. Pieced rows. Sew together five pieced blocks to make a pieced row. Make five rows. Sew together pieced rows to complete quilt center.
2. Outer border. Sew two 3" x 50 1/2" A strips to the left and right sides of quilt center, followed by two 3" x 55 1/2" A strips to the top and bottom of quilt center to complete quilt top (Quilt Diagram).

Finishing:

1. Prepare backing and press well. Trim to 63" x 63".
2. Layer quilt top, batting, and backing. Baste layers together.
3. Quilt as desired.
4. Trim layers even with quilt top squaring corners.
5. Join 2 1/4" B binding strips with diagonal seams. Press seams open. Attach binding to quilt using your favorite method.
6. Make a label and sew to the back of the quilt.

A



A



Quilt diagram

Whimsy

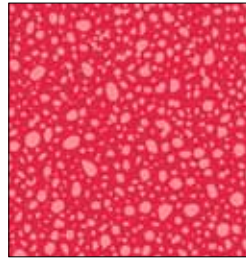
Fabric Collection by Heather Dutton
of Hang Tight Studio for P&B Textiles



WHIM 4407 DR



WHIM 4405 R



WHIM 4415 R



WHIM 4411 P



WHIM 4410 P



WHIM 4413 LP



WHIM 4404 J



WHIM 4403 O



WHIM 4406 O



WHIM 4409 AU



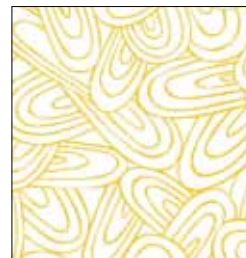
WHIM 4414 YY



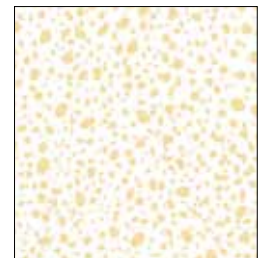
WHIM 4413 Y



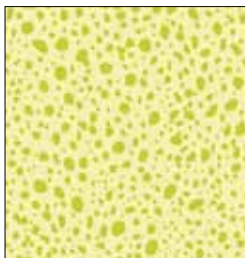
WHIM 4403 Y



WHIM 4412 Y



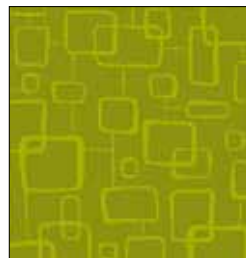
WHIM 4415 LY



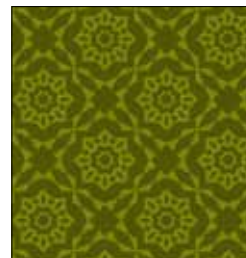
WHIM 4415 LA



WHIM 4413 A



WHIM 4411 A



WHIM 4409 A



WHIM 4404 E



WHIM 4405 NE



WHIM 4413 GR



WHIM 4410 DS



WHIM 4403 DS



WHIM 4411 SZ



Whimsy

Fabric Collection by Heather Dutton
of Hang Tight Studio for P&B Textiles



WHIM 4403 VV



WHIM 4406 C



WHIM 4407 L



WHIM 4408 BV



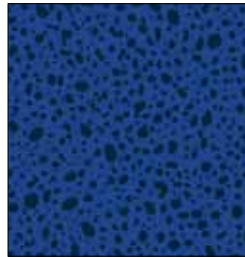
WHIM 4412 BV



WHIM 4404 B



WHIM 4409 BV



WHIM 4415 BB



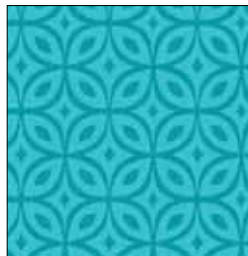
WHIM 4403 BN



WHIM 4412 DT



WHIM 4409 T



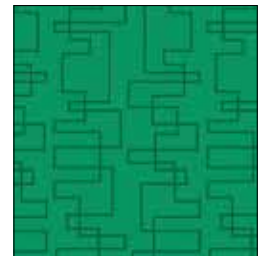
WHIM 4413 T



WHIM 4411 LT



WHIM 4405 G



WHIM 4414 GG



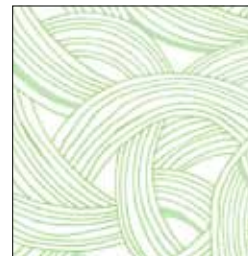
WHIM 4408 G



WHIM 4406 G



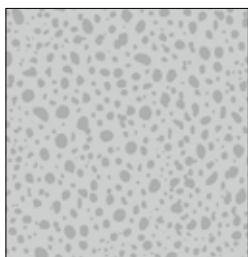
WHIM 4410 G



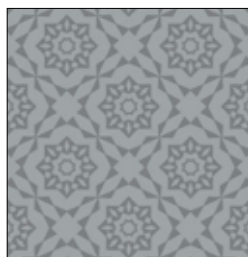
WHIM 4407 LG



WHIM 4405 LS



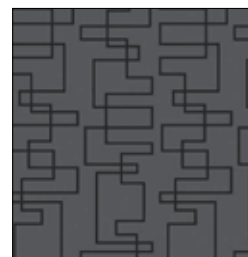
WHIM 4415 S



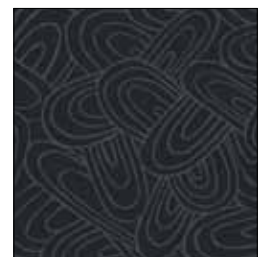
WHIM 4409 S



WHIM 4408 DS



WHIM 4414 KS



WHIM 4412 KS

