

Kindness Always Panel Quilt

 **Riley Blake**
DESIGNS™



By the RBD Designers



= Beginner

Kindness Always Panel Quilt

FINISHED QUILT SIZE 58½" x 66"

Measurements include ¼" seam allowance.

Sew with right sides together unless otherwise stated.

Please check our website www.rileyblakedesigns.com for any revisions before starting this project. This pattern requires a basic knowledge of quilting techniques and terminology. The quilt and block diagrams portrayed are virtual images. The layout and look of your project may differ when using actual fabric.

WOF = Width of Fabric

RST = Right Sides Together

KIT INCLUDES

(1) Kindness Always Panel (PD13025-Frosting)

1¼ yards Tonal (C13024-Teal) includes binding

1½ yards Main (CD13020-White)

¾ yard Tonal (C13024-Coral)

1 Fat Quarter each of:

Tonal (C13024-Navy)

Tonal (C13024-Yellow)

Leopard (CD13023-Teal)

OTHER SUPPLIES

Basic Sewing Supplies

8 sheets 8½" x 11" of Foundation Paper-Piecing paper

Light pad or Light table (*optional*)

3¾ yards Backing

66½" x 74" piece of Batting

CUTTING REQUIREMENTS

- Please read instructions before cutting fabrics.
- Cutting Instructions are based on 42" WOF.
- Refer to the quilt cover art for the placement of fabrics.
- Use a straight edge ruler and rotary cutter to cut fabrics.
- Orient the pieces according to their pertinent diagrams. Doing so is essential to following relational instructions such as top, bottom, left, right and so on.
- Label pieces as you cut.

Panel

Trim the panel to measure 35½" x 43½". Before trimming, ensure there will be at least a ¼" between the outermost panel illustrations and the trimmed edges of the panel.



Teal Tonal

Cut (5) 4½" x WOF.

G

Cut (7) 2½" x WOF strips for binding.



White Main

Cut (5) 6½" x WOF.

H



Coral Tonal

Cut (2) 5" x WOF; subcut:

(4) 5" x 12½" rectangles

B

From remaining fabric, cut:

(1) 2¼" x 15" strip

E

Cut (2) 2¼" x WOF.

E

Cut (2) 2" x WOF; subcut:

(2) 2" x 39" strips

F



Navy Tonal

Cut (4) 4½" x 14" rectangles

D



Yellow Tonal

Cut (8) 4" x 11" rectangles.

A



Teal Leopard

Cut (4) 5" x 15" rectangles

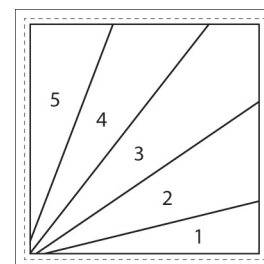
C

CORNER BLOCK ASSEMBLY

General Paper-piecing guidelines:

- Add pieces in numerical order.
- Set your machine's stitch length to 1.5, or about 20 stitches per inch.
- Use a window or light table to aid in fabric placement.

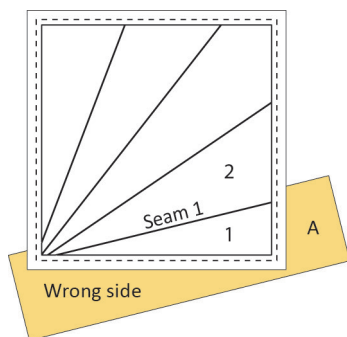
1. Either enlarge the template on page 8 at 200%, or make 4 copies of each Foundation Corner Sunbeam template onto foundation paper (pages 4-7). Tape the Sunbeam sections together along the Join lines. Trim excess paper ½" beyond the dashed outer line. Prepare 4 Sunbeam templates.



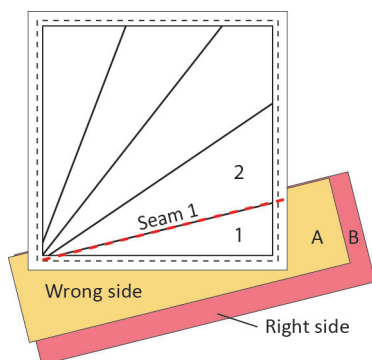
Foundation Corner Sunbeam

Kindness Always Panel Quilt

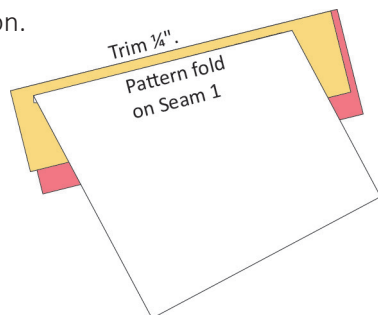
- With the wrong side of rectangle A facing the *unprinted* side of the paper pattern, align its long edge to Seam 1. Push this edge into Space 2 at least $\frac{1}{4}$ " to create a seam allowance. The fabric should cover all of space 1 and at least $\frac{1}{4}$ " beyond its area on all sides. Pin in place.



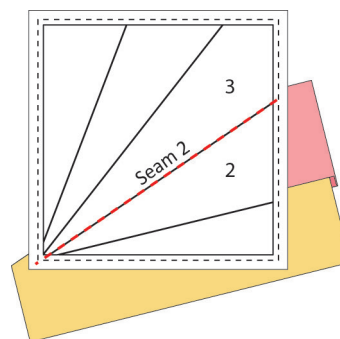
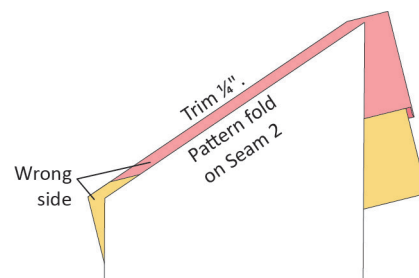
- Position rectangle B RST to rectangle A, matching the angle of Seam 1 and extending into Space 2 at least $\frac{1}{4}$ ". Pin in place. **TIP:** Check to see if rectangle B will cover space 2 and $\frac{1}{4}$ " beyond space 2's area, by pinning on the Seam 1 line and laying B open over space 2.



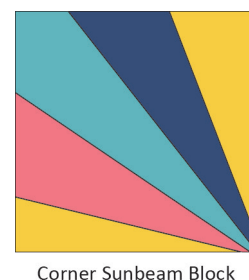
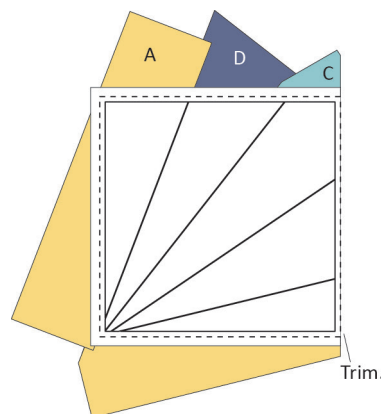
- On the printed side of the foundation paper, sew Seam 1 (shown in red above). Make sure to extend the stitching beyond the outside dashed line. Check to see that B covers at least $\frac{1}{4}$ " beyond the edges of Space 2.
- Fold the paper at the stitched line to reveal the fabrics. Trim the seam allowance $\frac{1}{4}$ " beyond the pattern fold. From the back side, flip rectangle B into position and press with a dry iron.



Tip: Before adding the next rectangle, fold the pattern at the next Seam line and trim rectangle B $\frac{1}{4}$ " away from the pattern fold. This provides a straight edge and correct angle for lining up the next rectangle.



- Repeat Steps 4-6 using rectangles C, D, & A in sequence to cover the remaining spaces.
- Working from the printed side of the pattern, trim to the $\frac{1}{4}$ " dashed line all around. Block should measure $10\frac{1}{2}$ " square. Make 4 Corner Sunbeam Blocks.



Corner Sunbeam Block

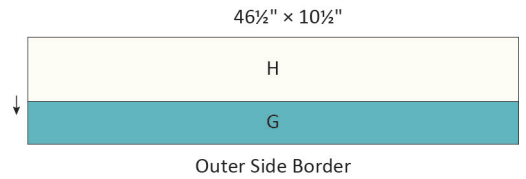
BORDER ASSEMBLY

- Make the Inner Borders. Refer to the Quilt Layout Diagram on page 3 as an additional visual guide. Sew (3) strips E together end-to-end. Subcut (2) strips $43\frac{1}{2}$ " long.
- Sew a strip to each side of the panel.
- Sew a strip F to the top and bottom of the panel. Quilt center now measures $39" \times 46\frac{1}{2}"$.

Kindness Always Panel Quilt

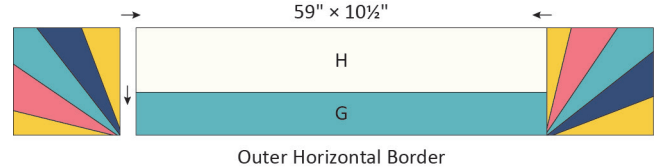
- Make the Outer Side Borders. Cut (1) strip **G** in half (21"). Sew (2½) strips **G** together end-to-end.

- Repeat Step 4 using strips **H**. Sew pieced strips **G** and **H** together lengthwise (should be 10½" wide). Subcut (2) strips 46½" in length. Sew (1) strip to each side of the quilt center, orienting the **G** strips to the inside (59" × 46½").



- Make the Outer Horizontal Borders. Sew (1) **G** & (1) **H** strip together lengthwise (should be 10½" wide). Subcut the strip to 39" in length. Repeat to make (2) Horizontal Borders.

- Sew a Sunbeam Block to each end of a Horizontal Border making sure the Sunbeam points are facing toward the inside bottom corner as shown (59" × 10½"). Make 2.

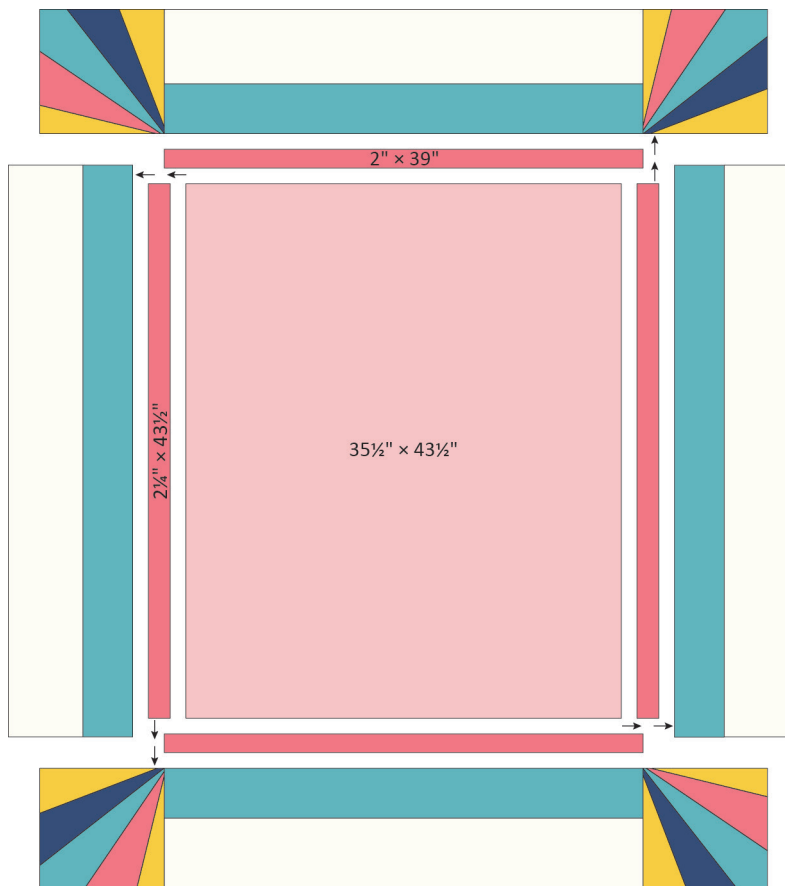


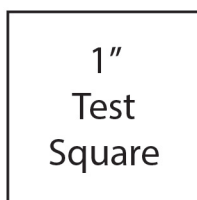
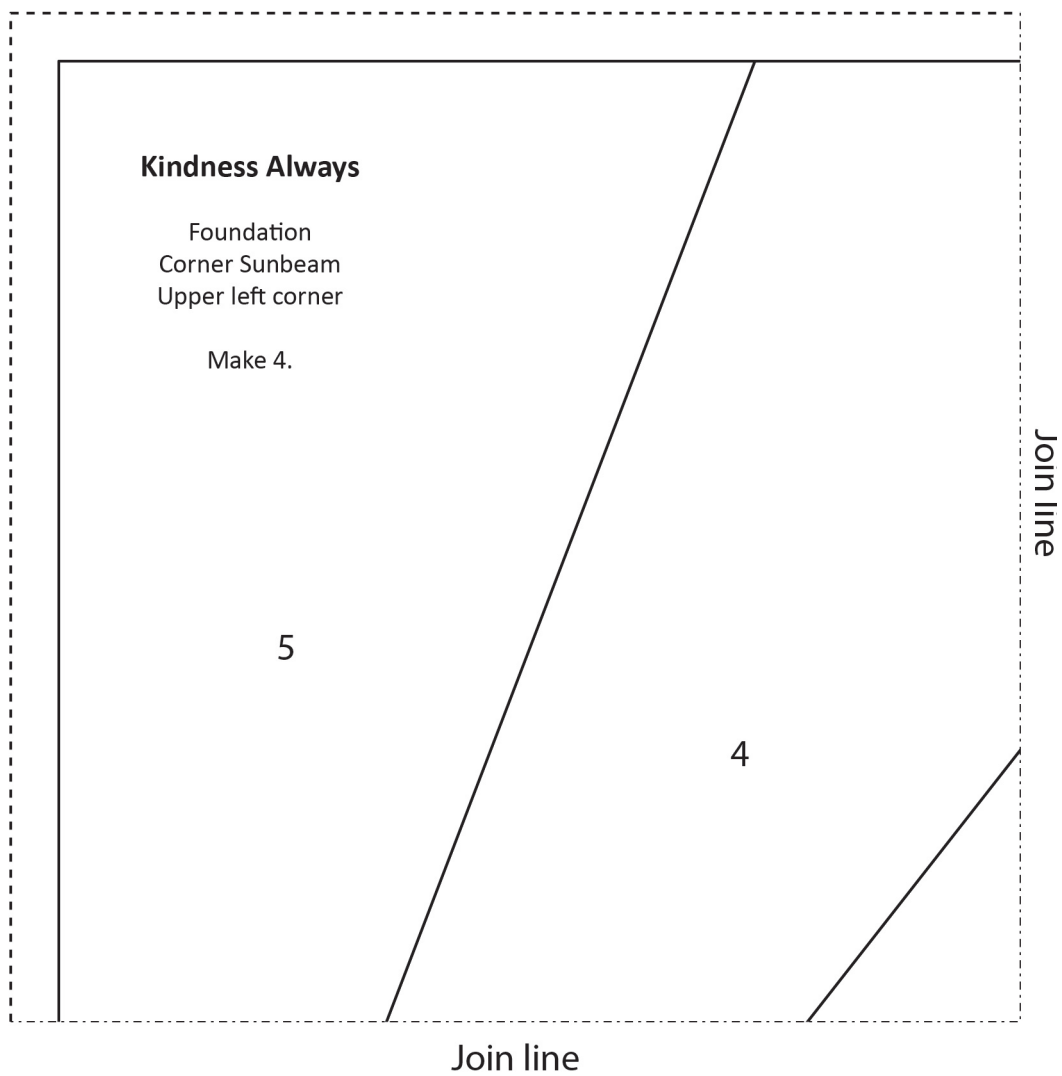
- Sew a Horizontal Border to the top and bottom of the quilt center, orienting all Sunbeam points toward the quilt center. Quilt measures 59" × 66½". Carefully remove the paper backing from the Sunbeam blocks.

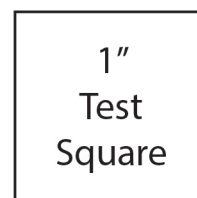
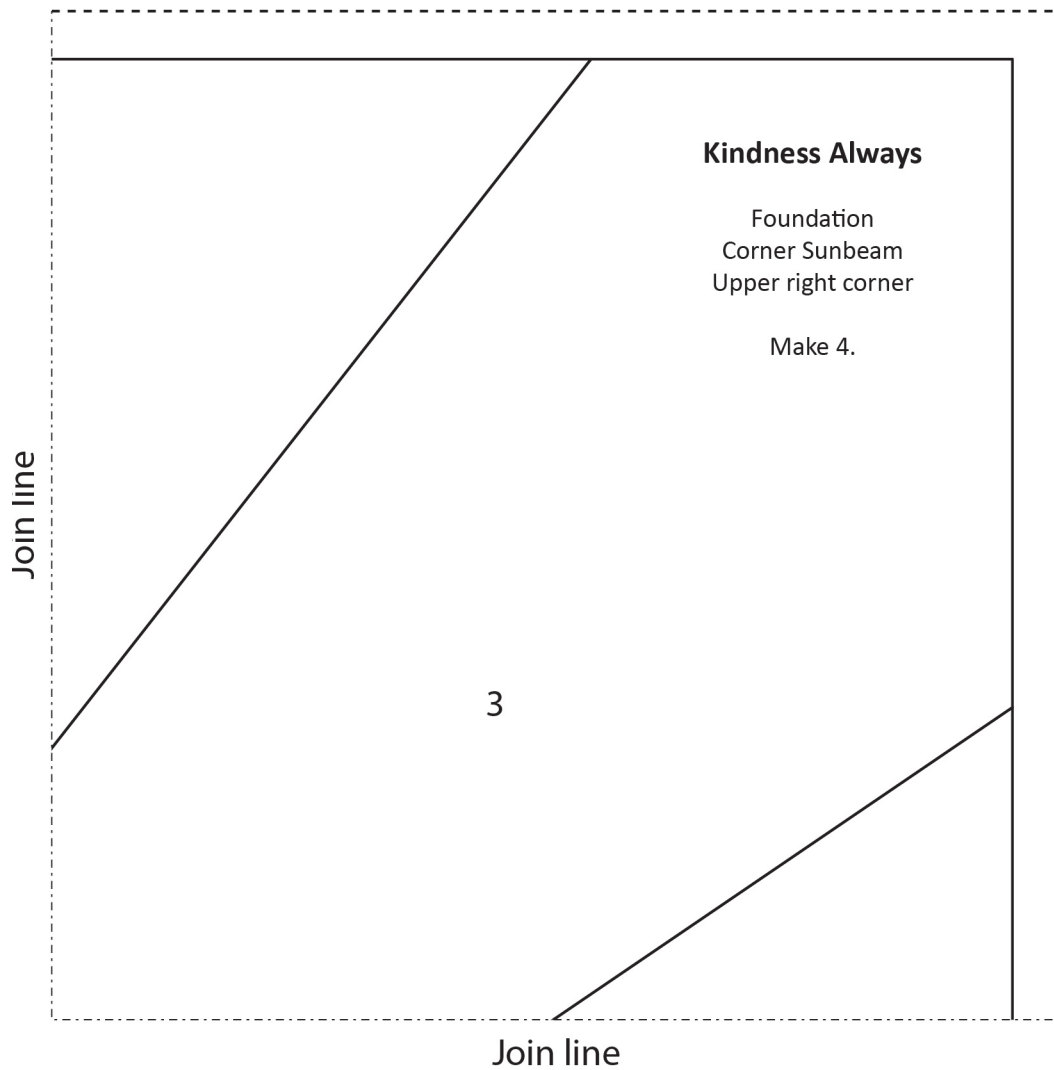
FINISHING THE QUILT

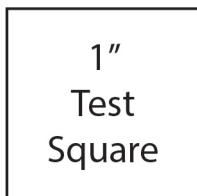
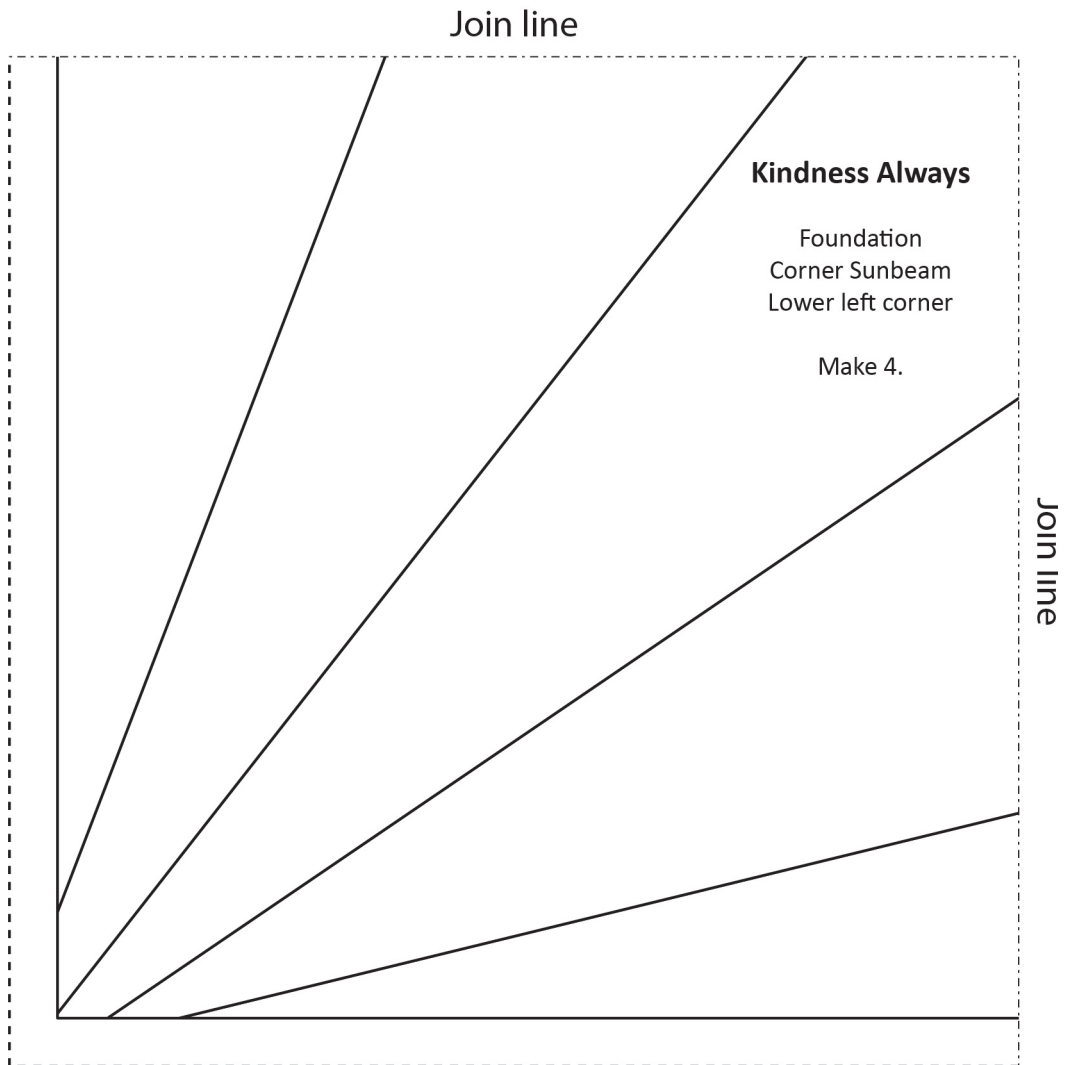
Finish your quilt by layering the quilt top, batting and backing. Quilt as desired. Bind with (7) 2½" x WOF Teal Tonal strips. Have fun and enjoy the journey of making your quilt!

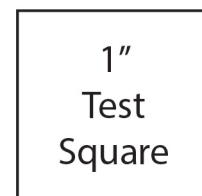
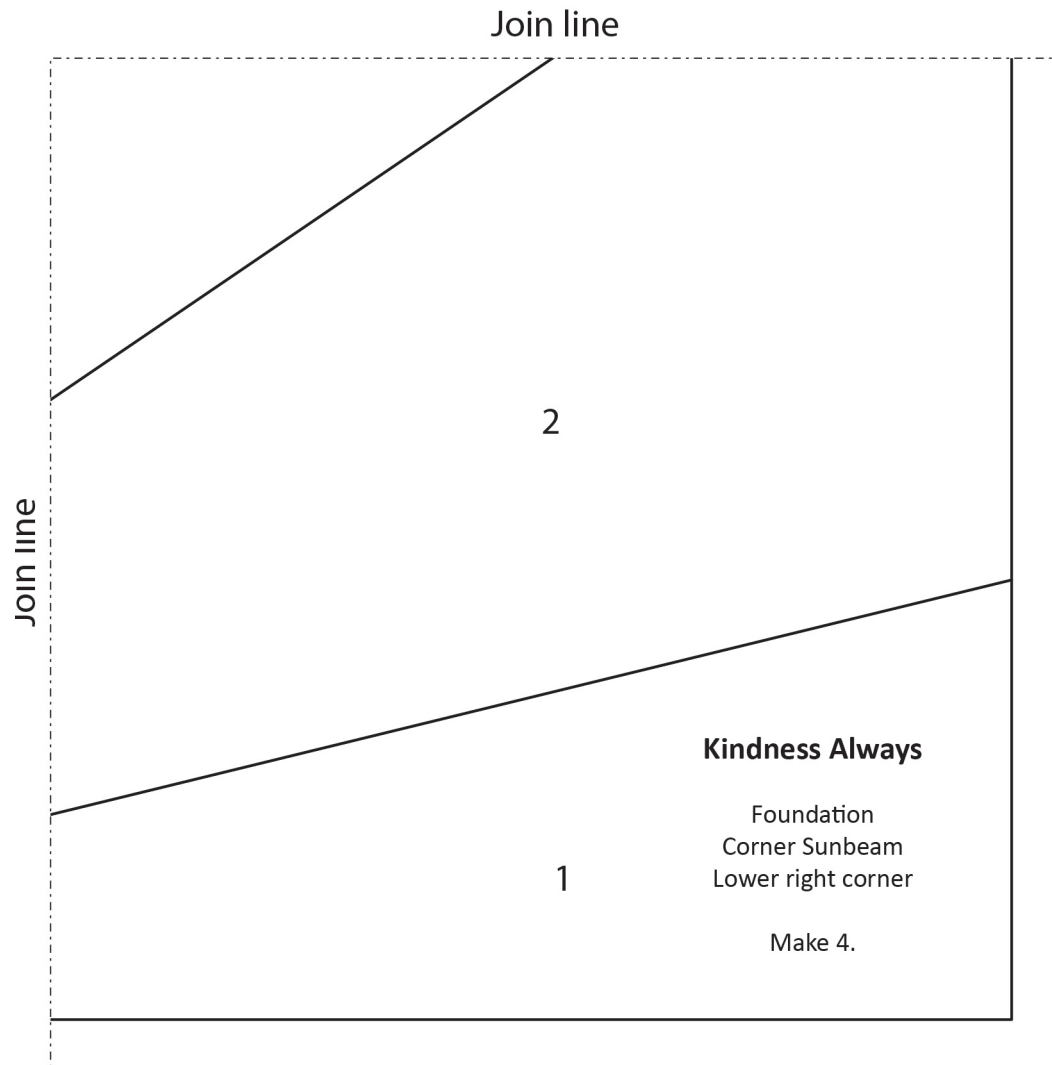
QUILT LAYOUT DIAGRAM

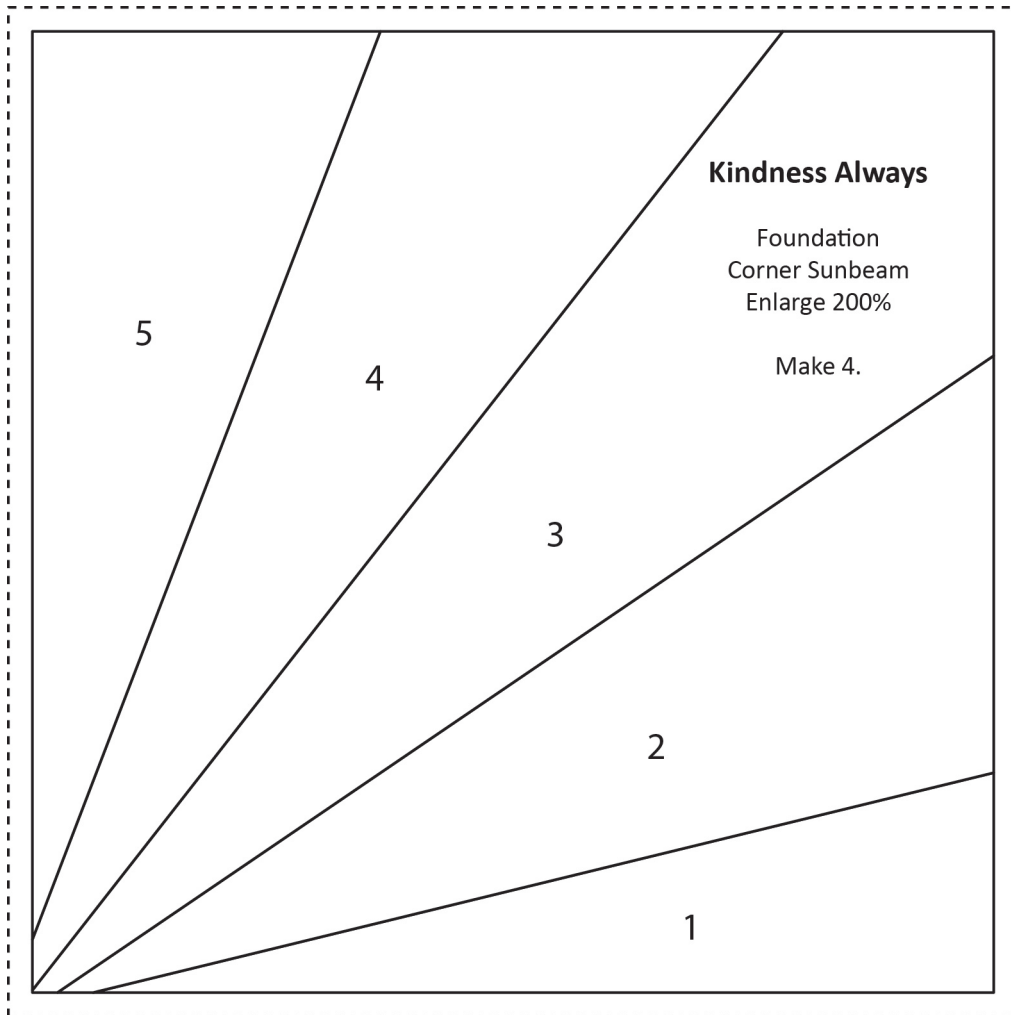












1"
Test
Square