

# A Quarter Charmed

By Monique Dillard



approx finished size 28-1/2" x 28-1/2"

**NORTHGATE MANOR** | A Maywood Studio Designer Collection with Monique Dillard



PORTLAND  
800.433.0722  
503.284.4124

6000 N. Cutter Cir.  
Portland, OR 97217  
fax 503.288.4475



LOS ANGELES  
800.237.6620  
323.584.8820

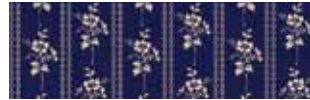
4561 Maywood Ave  
Vernon, CA 90058  
fax 323.584.8847

www.maywoodstudio.com

## Fabrics:

(30) NorthGate Manor 5" Charm Squares

Binding Your Choice 1/3 yard  
Backing Your Choice 1 yard



Inner & Outer Borders  
MAS2028-N 3/8 yard



Middle Border  
MAS2027-N 1/2 yard

## Cutting:

MAS2028-N Inner & Outer Border  
cut (8) 1-1/2" strips WOF

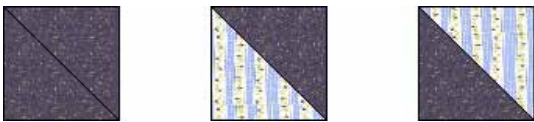
MAS2027-N Middle Border  
cut (4) 4" strips WOF

From the binding fabric, cut (4) 2-1/4" strips

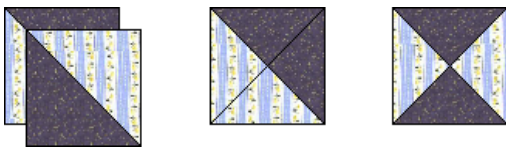
© 2013 Monique Dillard, www.maywoodstudio.com

## Piecing:

1. Separate your charms into 15 light and 15 dark squares. Pair them, right sides together, using one light and one dark square per pair.
2. Draw a diagonal line from corner to corner on the back of one charm square. Sew a 1/4" seam on each side of the line. Cut exactly on the drawn line and press seam towards the darker fabric.

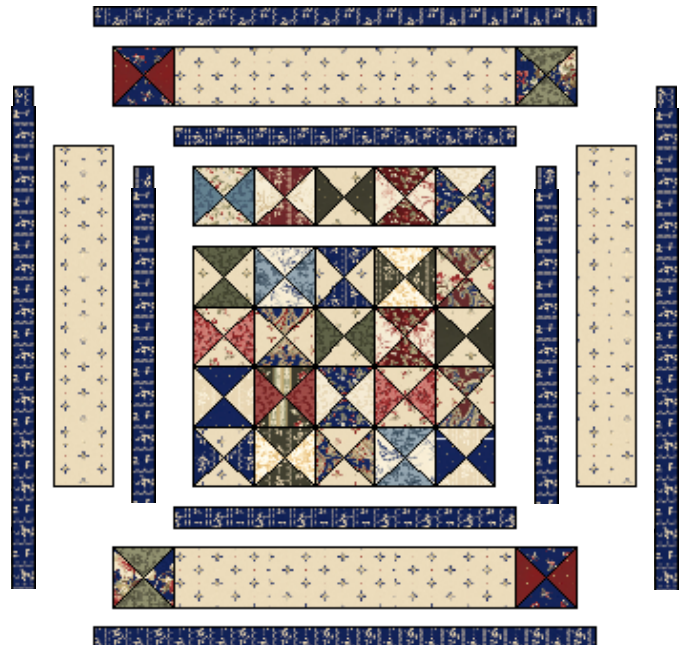


3. Place the pieces from step 2, right sides together with the fabrics opposite of each other and seams matching. Draw a diagonal line that bisects the seam line (see diagram below). Sew a 1/4" seam on each side of the line and cut exactly on the line.



4. Repeat for each pair. You will get 2 squares per pair of fabrics.
5. Trim each square to 4".

6. Sew the center blocks together in rows, turning every other block as shown. Iron seams in each row in opposite directions. Sew rows together. Using the diagram below as a guide, add the borders starting with sides of each border then the top & bottom.



7. Quilt, bind and enjoy!