


# Biscuits and Jam

Perfect Pairings Collection by Kim Diehl



Finished Quilt Size: 13½" x 13½"  
A Free Project Sheet From

 Henry Glass & Co., Inc.



49 West 37th Street, New York, NY 10018  
tel: 212-686-5194 fax: 212-532-3525  
Toll Free: 800-294-9495  
[www.henryglassfabrics.com](http://www.henryglassfabrics.com)

[facebook](#)



# BISCUITS AND JAM

## 13½" x 13½" Mini Quilt

Finished block size: 3" x 3"

Designed by Kim Diehl

### Materials

5 fat eighths (9" x 22") of assorted red prints: 6063-88, 6064-88, 6065-88, 6066-88, 6067-88

3 fat eighths of assorted cream prints: 6060-44, 6061-44, 6062-8

1 fat quarter (18" x 22") of fabric for backing

18" square of batting

¼" bias bar

Supplies for your favorite appliqué method

Liquid glue for fabric, water-soluble and acid-free

### Cutting

*Cut all pieces across the width of the fabric in the order given, unless otherwise noted.*

#### From red print 6063-88, cut:

1 strip, 5½" x 22"; crosscut this strip to make a 5½" x 13½" rectangle and a 5½" x 8½" rectangle

-- From the 13½" rectangle, cut 2 strips, 1½" x 13½" and 2 strips, 1" x 13½"

-- From the 8½" rectangle, cut 1 *bias* strip, 1" x 5"; 1 rectangle, 1½" x 3½"; and 1 rectangle, 1" x 2½"

1 strip, 1½" x 22"; crosscut into 2 rectangles, 1½" x 9½"

1 strip, 1" x 22"; crosscut into 2 rectangles, 1" x 9½"

#### From each of the four remaining red prints, cut:

1 strip, 1½" x 22"; from this strip, cut 2 rectangles, 1½" x 3½" (combined total of 8), and 2 rectangles, 1" x 2½" (combined total of 8)

2 *bias* strips, 1" x 5" (combined total of 8)

Enough 2½"-wide assorted lengths to equal a 64" length of binding when pieced together end to end.

#### From the cream ribbon print, 6062-8, cut:

3 strips, 1" x 22"; crosscut into 2 rectangles, 1" x 9½", and 2 strips, 1" x 13½"

1 strip, 2" x 22"; crosscut into 3 rectangles, 2" x 3½"

1 strip, 1½" x 22"; from this strip, cut 6 squares, 1½" x 1½", and 6 rectangles, 1" x 1½"

#### From each of the two remaining cream prints, cut:

1 strip, 2" x 22"; crosscut into 3 rectangles, 2" x 3½" (combined total of 6)

1 strip, 1½" x 22"; from this strip, cut 6 squares, 1½" x 1½" (combined total of 12), and 6 rectangles, 1" x 1½" (combined total of 12)

### Piecing the Blocks

*All pieces are sewn with right sides together and a ¼" seam allowance unless otherwise noted.*

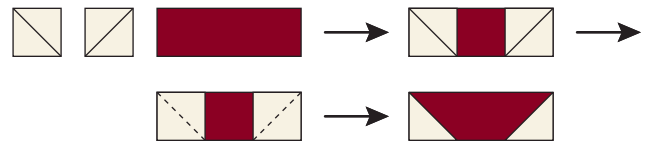
1. Fold a red print bias strip in half lengthwise with wrong sides together and use a slightly scant ¼" seam allowance to stitch the long raw edges. Use the bias bar to press each tube flat, centering the seam allowance so it will be hidden from the front. After removing the bias bar, apply small dots of liquid fabric glue underneath each pressed seam at approximately ½" intervals. Use a hot, dry iron to heat set the glue dots and anchor each seam in place.



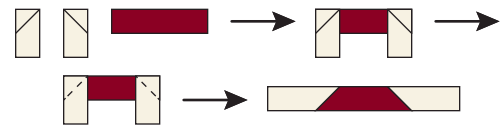
2. Apply small dots of liquid fabric glue to the seam of a prepared handle. Referring to the pictured quilt, position the handle onto a cream print 2" x 3½" rectangle, with the raw edges flush at the bottom rectangle edge and the outer curves resting approximately ½" in from each side and top edge; trim away any excess handle length. Repeat with the remaining handles and cream rectangles to make a total of nine handle units. Use your favorite appliqué method to stitch the handles.

3. Use a pencil and an acrylic ruler to draw a diagonal sewing line on the wrong side of each cream print 1½" square.

4. Select one handle unit, two matching prepared cream print 1½" squares, two matching cream print 1" x 1½" rectangles, one matching red print 1½" x 3½" rectangle, and one matching red print 1" x 2½" rectangle. Layer a cream 1½" square onto each end of the red 1½" x 3½" rectangle as shown. Stitch the pieces on the drawn lines. Fold the inner corner of each stitched square open to form the basket; press. Trim away the layers beneath the top triangles, leaving a ¼" seam allowance.



5. Layer a cream 1" x 1½" rectangle onto each side of the red 1" x 2½" rectangle as shown. Use a pencil and an acrylic ruler to draw diagonal stitching lines from the inner top cream corners down to where the outer bottom edges intersect the red print. Stitch the pieces on the drawn lines. Fold the bottom of the cream print rectangles open to form the basket base; press. Trim away the excess bottom layers as instructed in step 4.



6. Referring to the pictured quilt, lay out the handle unit, the basket, and the basket base. Join the rows. Press the seam allowance of the handle unit toward the basket. Press the seam allowance of the basket base open. Repeat steps 4 through 6 to make nine pieced Basket blocks measuring 3½" square, including the seam allowances.

### Piecing the Quilt Top and Completing the Quilt

1. Referring to the pictured quilt, lay out the Basket blocks in three rows of three blocks. Join the blocks in each horizontal row. Press the seam allowances open. Join the rows. Press the seam allowances away from the basket bases.

2. Join a red print 1" x 9½" and 1½" x 9½" strip to each long side of a 1" x 9½" cream ribbon print strip. Press the seam allowances toward the red print. Repeat to make two pieced strips. Join these strips to the right and left sides of the quilt center. Press the seam allowances away from the quilt center. In the same manner, make two pieced strips using the remaining red print and cream ribbon print 13½" strips. Join these pieced strips to the remaining sides of the quilt center. Press the seam allowances away from the quilt center. The pieced quilt top should now measure 13½" square, including the seam allowances.

3. Layer the quilt top, batting, and backing. Quilt the layers. Join the random lengths of assorted red prints into one strip and use it to bind the quilt.