



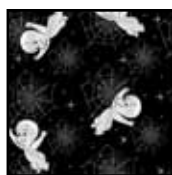
Design and Instruction by Larene Smith
Finished Size: 63" x 20"

quiltingtreasures.com

© 2014 Classic Media, LLC. Casper, its logos, names and related indicia are trademarks of and copyrighted by Classic Media, LLC. All rights reserved



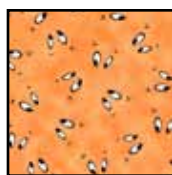
23946 J



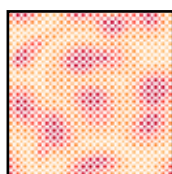
23947 J



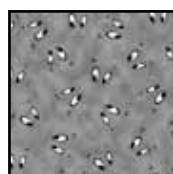
23950 J



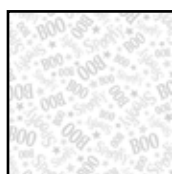
23949 O



23413 RO



23949 K



23950 K

FABRIC REQUIREMENTS	
Design	Yards
23946 J	5/8
23947 J	1/4
23950 J	1/8
23949 O	1/8
23413 RO	1/2
23949 K	1/2
23950 J (Binding)	1/2
23950 K (Backing)	2
26" x 69" Warm n' Plush Batting	

General Information

- Skill Level: Confident Beginner
- Please read all instructions before beginning.
- All seams are sewn with a 1/4" seam allowance.
- Pre-wash and press with spray starch.
- **WOF** = Width of Fabric is based on 42".
- Press all seams open (unless directed otherwise) to decrease bulk.
- Finished Blocks are 18" x 13".
- Label all pieces when cut for easier construction.

Additional Fabric Requirements

- 69" x 26" Warm n' Plush Batting.

Step 1: Cutting the Fabric

1. Fabric A: 23946 J

- Fussy Cut (1) 18 1/2" x 13 1/2" rectangle and (2) 14 1/2" x 5 1/2" rectangles as illustrated in the Cover Photo.

2. Fabric B: 23947 J

- Fussy Cut (1) strip at 3 1/2" x **WOF** – Sub-cut into (4) 10 1/2" x 3 1/2" rectangles.

3. Fabric C: 23950 J

- Cut (1) strip at 3 1/2" x **WOF** – Sub-cut into (4) 3 1/2" squares.

4. Fabric D: 23949 O

- Cut (1) strip at 3 1/2" x **WOF** – Sub-cut into (4) 3 1/2" squares and (2) 5 1/2" x 3 1/2" rectangles.

5. Fabric E: 23413 RO

- Cut (4) strips at 1 1/2" x **WOF** – Sub-cut into (2) 5 1/2" x 1 1/2" rectangles, (8) 3 1/2" x 1 1/2" rectangles, (4) 18 1/2" x 1 1/2" rectangles, and (2) 13 1/2" x 1 1/2" rectangles.
- Cut (4) strips at 1 1/2" x **WOF** – Sub-cut into (2) 15 1/2" x 1 1/2" rectangles (Right and Left Sides) – Inner Border. Sew the remaining (3) strips together at the 1 1/2" edge then sub-cut into (2) 56 1/2" x 1 1/2" rectangles (Top and Bottom) – Inner Border.

6. Fabric F: 23949 K

- Cut (5) strips at 2 3/4" x **WOF** – Sub-cut into (2) 15 1/2" x 2 3/4" rectangles (Left and Right Sides) – Outer Border. Join all the remaining 2 3/4" strips at the 2 3/4" edge using diagonal seams then sub-cut into (2) 63" x 2 3/4" rectangles (Top and Bottom) – Outer Border.

7. Fabric G: 23950 J

- Cut (5) strips at 2 1/2" x **WOF** – Join all the strips at the 2 1/2" edge using diagonal seams for the Binding.

Step 2 – Sewing the Left Side Block

Note: Refer to Example A Left Side as a guide when sewing the block together.

8. From Left to Right sew the following pieces together at the 3½" edge to measure 18½" x 3½" – Make (2) – Fabric C 3½" square, Fabric E 1½" x 3½" rectangle, Fabric B 10½" x 3½" rectangles, Fabric E 1½" x 3½" rectangle, Fabric D 3½" square – Label "Set A" and set aside.
9. From Left to Right sew the following pieces together at the 5½" edge to measure 18½" x 5½" – Make (1) – (1) Fabric D 3½" x 5½" rectangle, (1) Fabric E 1½" x 5½", Fabric A 14½" x 5½" rectangle.
10. Sew (1) Fabric D 18½" x 1½" rectangle to the top and bottom of the rectangle just completed in step 9. The piece should measure 18½" x 7½", then sew (1) of "Set A" to the top and bottom to finish the LEFT SIDE BLOCK at 18½" x 13½" as illustrated in Example A.

Example A Finished Blocks Left Side



Right Side



Step 3 – Sewing the Right Side Block

Note: Refer to Example A Right Side as a guide when sewing the block together.

11. From RIGHT to LEFT sew the following pieces together at the 3½" edge to measure 18½" x 3½" – Make (2) – Fabric C 3½" square, Fabric E 1½" x 3½" rectangle, Fabric B 10½" x 3½" rectangles, Fabric E 1½" x 3½" rectangle, Fabric D 3½" square – Label "Set B" and set aside.
12. From Right to Left sew the following pieces together at the 5½" edge to measure 18½" x 5½" – Make (1) – (1) Fabric D 3½" x 5½" rectangle, (1) Fabric E 1½" x 5½", Fabric A 14½" x 5½" rectangle.
13. Sew (1) Fabric D 18½" x 1½" rectangle to the top and bottom of the rectangle just completed in step 12. The piece should measure 18½" x 7½", then sew (1) of "Set B" to the top and bottom to finish the RIGHT SIDE BLOCK at 18½" x 13½" as illustrated in Example A.

Step 4 – Sewing the Table Runner Together

14. Sew the following together at the 13½" edge to measure 56½" x 13½" – Left Side Block, Fabric E 1½" x 13½", Fabric A 18½" x 13½" rectangle, Fabric E 1½" x 13½" rectangle, Right Side Block.
15. Sew (1) Fabric E 56½" x 1½" rectangle to the top and bottom, then sew (1) Fabric E 1½" x 15½" rectangle to the left and right sides to measure 58½" x 15½".
16. Sew (1) Fabric F 2¾" x 15½" rectangle to the left and right sides, then sew (1) Fabric F 63" x 2¾" rectangle to the top and bottom to finish the top at 63" x 20".

Step 7 – Finishing the Quilt

17. Layer the backing, batting, and quilt top and quilt as desired.
18. Trim layers even with quilt top .
19. Using Fabric G 2½" joined strips sew on the binding to finish the quilt.

While all possible care has been taken to ensure the accuracy of this pattern, we are not responsible for printing errors or the way in which individual work varies.