

Stocking diagram



Maywood
S T C U D I O

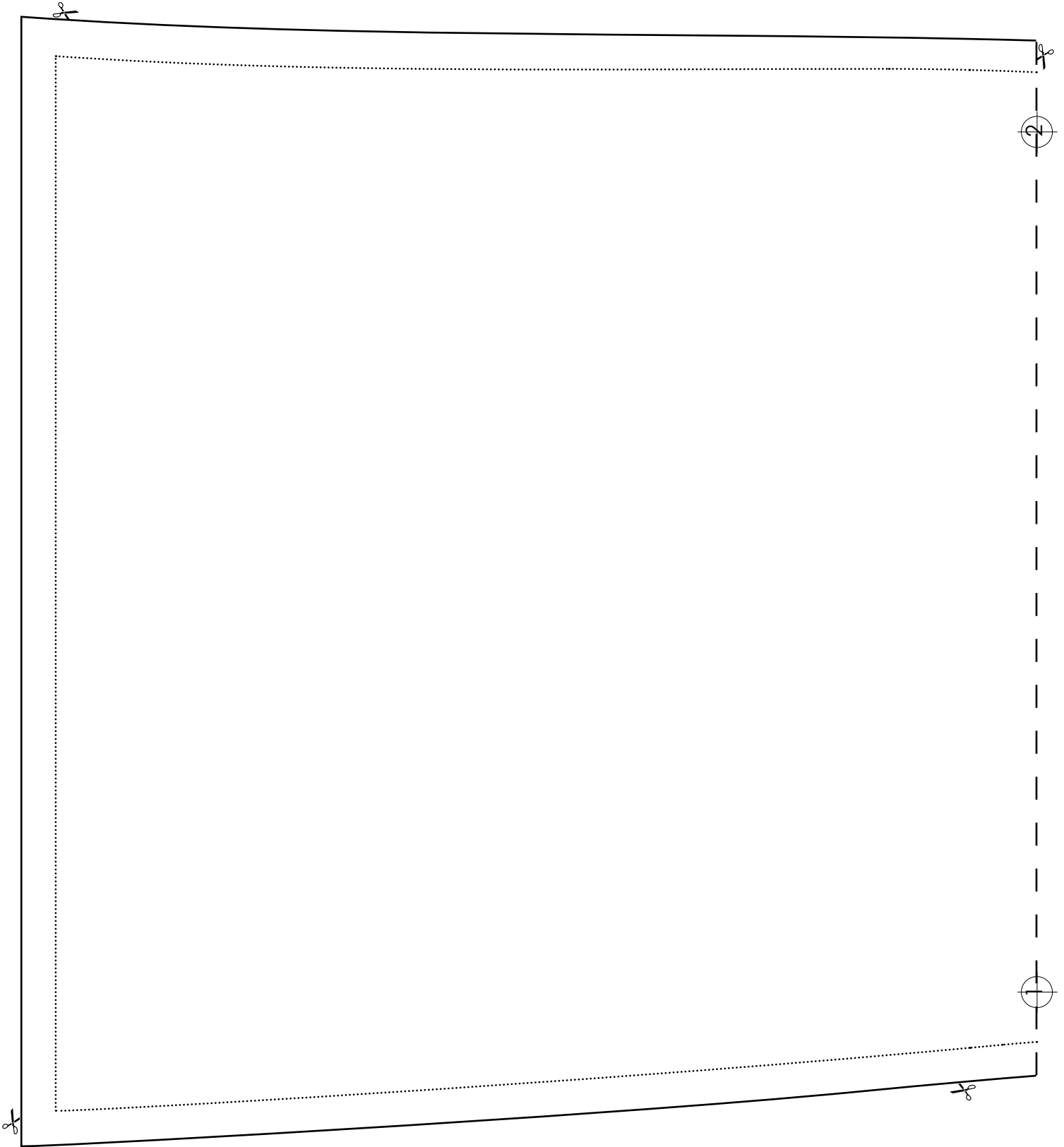
6000 N. Cutter Cir.
4561 Maywood Ave

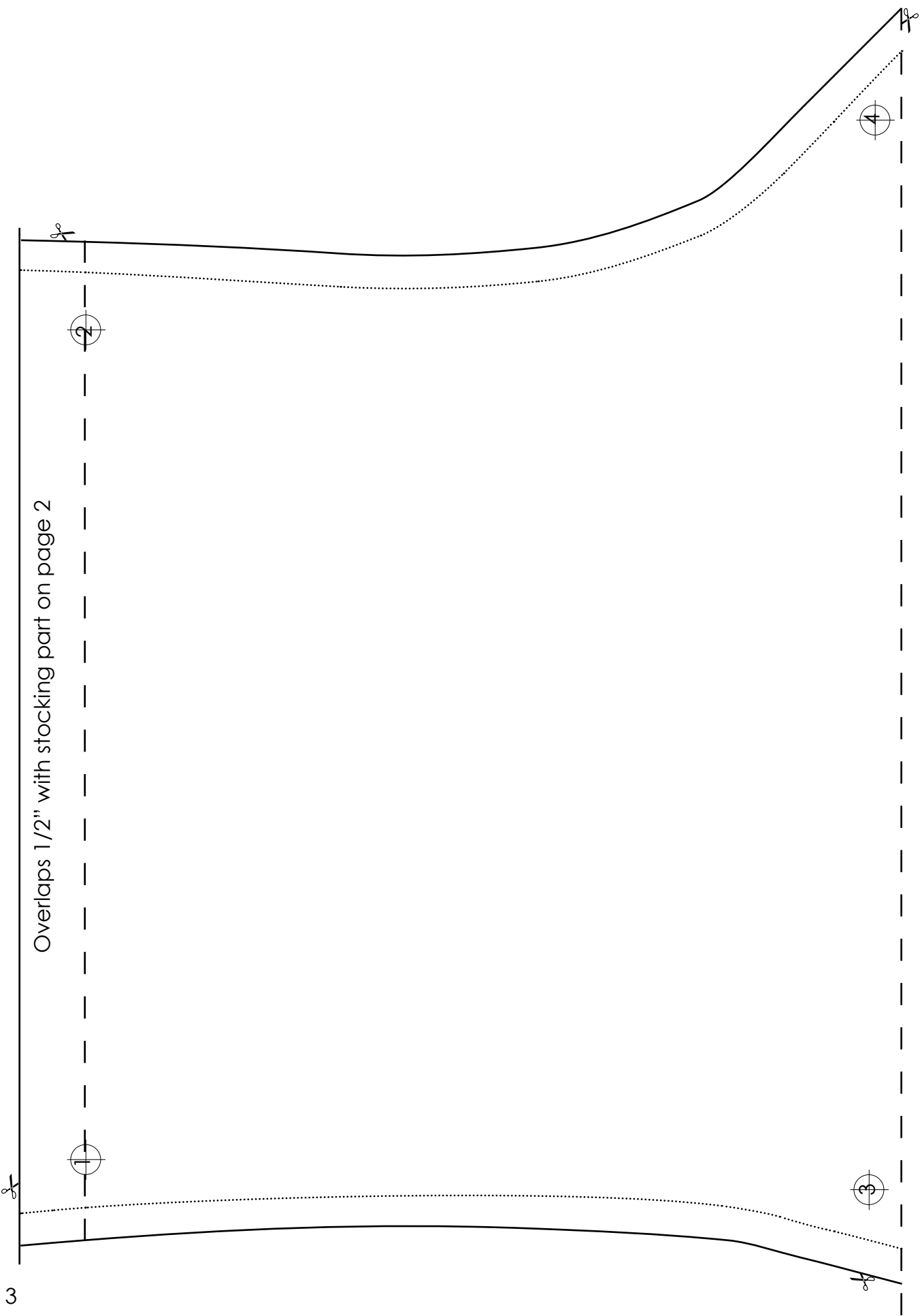
Portland, OR 97217
Vernon, CA 90058

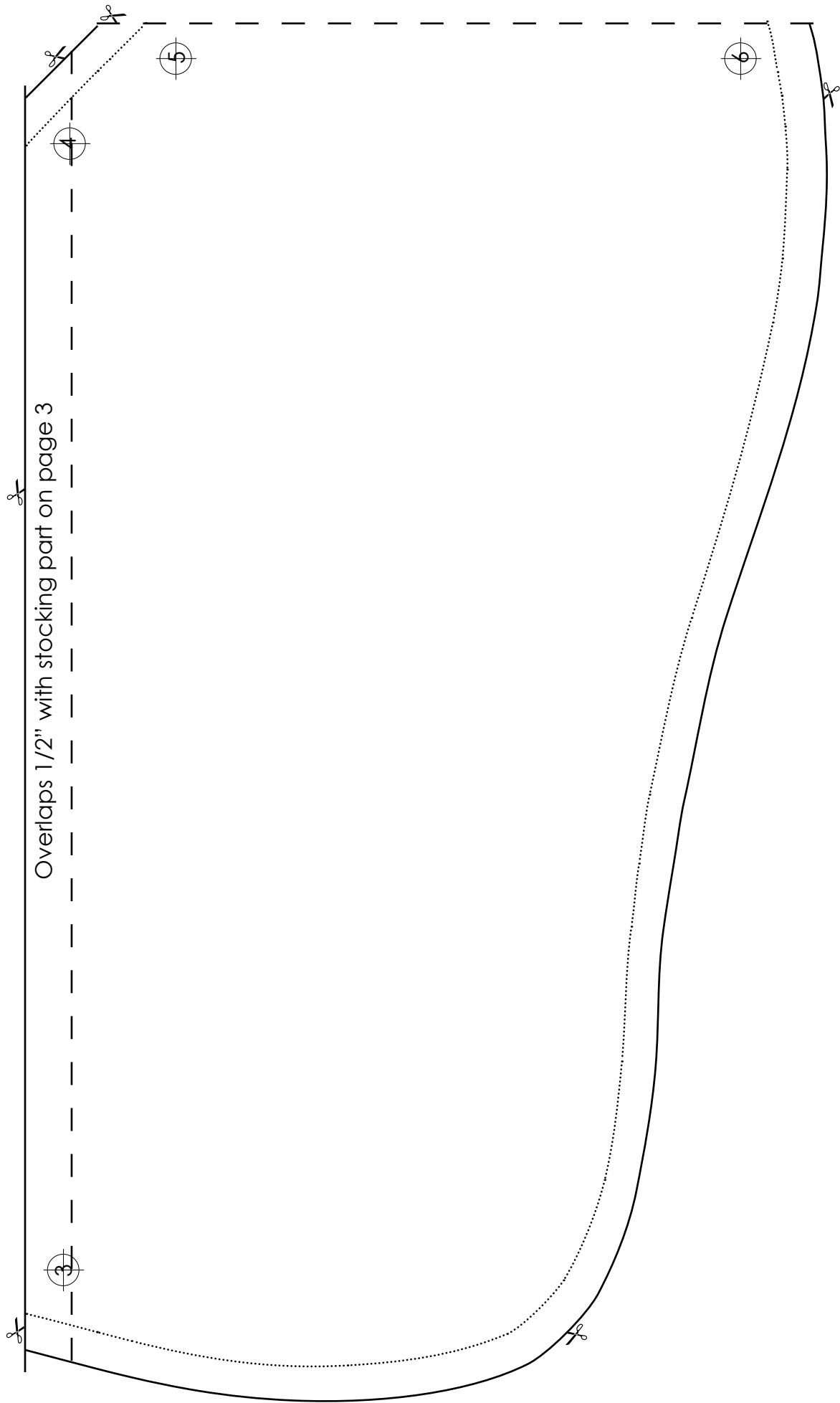
800.433.0722
800.237.6620

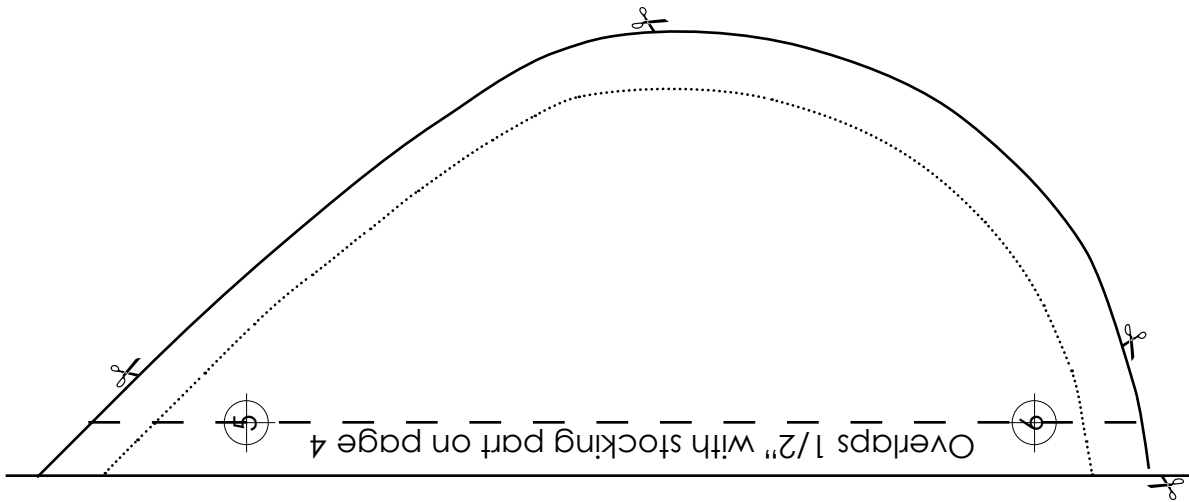
503.284.4124
323.584.8820

Actual size stocking diagram (instructions for piecing the diagram can be found on page 4).









Instructions for using full size stocking diagram:

This pattern can be printed on (4) standard 8-1/2" x 11" pieces of paper and taped together.

Pattern includes 1/4" seam allowance indicated by the dotted line (.....)

1. Print out all 4 pages at 100%.
2. Trim pattern on the cutting lines (marked with a ✂)
3. Match the registration marks (⊕) with the same numbers and line up the pattern sections on the dotted line (— — — —)
There should be approximately 1/2" overlap.
4. Tape the pieces together.
5. Pattern should be ready to use.