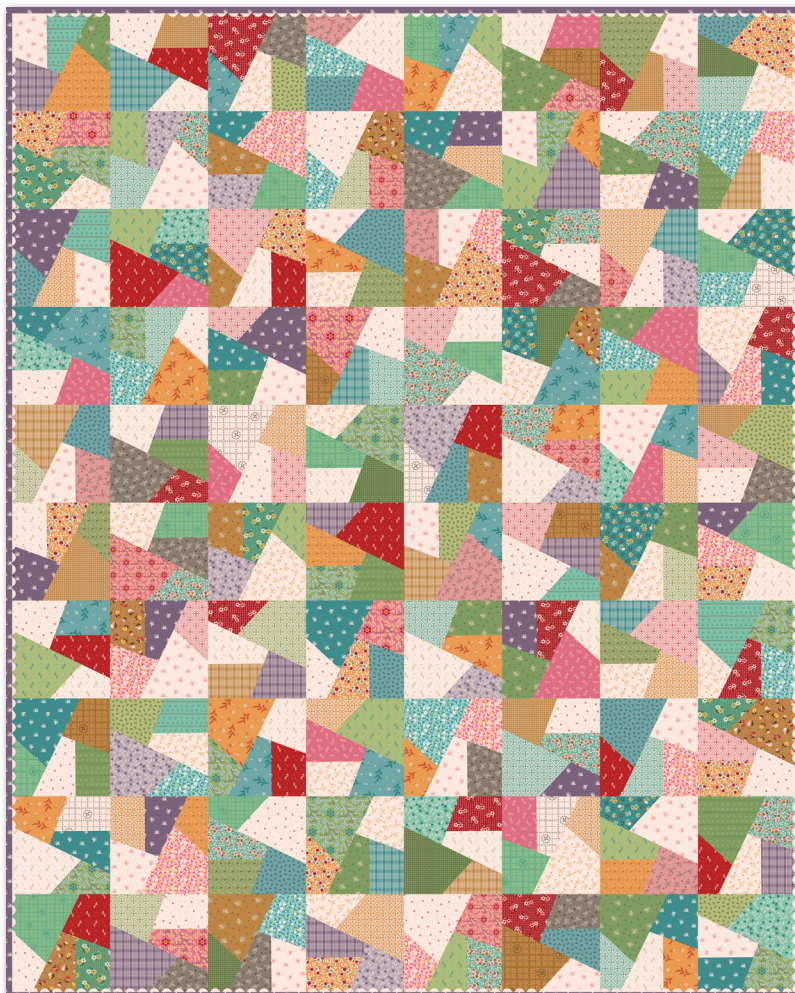


CRAZY PAPER QUILT & RUNNER


Riley Blake
DESIGNS®



64 ½" × 80 ½"



15 ½" × 60 ½"



= Confident Beginner



07/01/2025

CRAZY PAPER QUILT & RUNNER

FINISHED QUILT SIZE 64 ½" × 80 ½"

FINISHED RUNNER SIZE 15 ½" × 60 ½"

Please read all instructions before beginning this project.
Yardage calculated using a 42" usable width of fabric.

Pattern designed by Lori Holt of Bee in my Bonnet.

GENERAL INSTRUCTIONS

Please check www.rileyblakedesigns.com/pattern-updates or scan the QR Code for any revisions before starting this project.

This pattern requires a basic knowledge of quilting techniques and terminology. The quilt and block diagrams portrayed are virtual images. The layout and look of your project may differ when using actual fabric. It is not recommended to prewash fabric before cutting and assembling.



WOF = Width of Fabric

RST = Right Sides Together

FABRIC REQUIREMENTS

Fabric is from the Gentler Times collection.

QUILT

(2) 10-16470-42 10" Gentler Times Stackers

⅓ Yard Each:

C16475-RAISIN Delicate Background

C16476-LATTE Ditty Background

C16477-CORAL Endearing Background

C16482-CIDER Pleasant Background

C16490-BERRY Charming Background

Additional Fabric:

⅓ yard C16477-PLUM Endearing (binding)

RUNNER

(2) 5-16470-42 5" Gentler Times Stackers

(2) 5" Squares of Each:

C16471-COZY Bygone Background

C16472-PLUM Dapper Background

C16475-RAISIN Delicate Background

C16476-LATTE Ditty Background

C16477-CORAL Endearing Background

C16481-RAISIN Olden Days Background

C16482-CIDER Pleasant Background

C16489-SEAGLASS Welcome Background

C16490-BERRY Charming Background

Additional Fabric:

½ yard C16488-COZY Whippersnapper (binding)

OTHER SUPPLIES

Basic Sewing Supplies

Batting

QUILT

2 ⅓ yards WB16492-CIDER Nostalgia (wide back backing)

(2) Packages Lori Holt 10" Crazy Quilt Paper (ST-3610)

Lori Holt Cute Cuts™ Trim-it™ Ruler 8 ½" × 8 ½" (STTI-5529)

(1) Lori Holt Vintage Trim Large Latte Wooden Spool (STVT-40874)

RUNNER

⅓ yard WB16492-COZY Nostalgia (wide back backing)

(3) Packages Lori Holt 5" Crazy Quilt Paper (ST-17318)

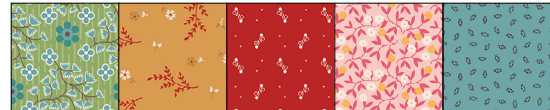
Lori Holt Cute Cuts™ Trim-it™ Ruler 3 ½" × 3 ½" (STTI-5525)

(1) Lori Holt Vintage Trim Large Cozy Wooden Spool (STVT-42333)

CUTTING INSTRUCTIONS

When cutting fabrics, use a straight edge ruler and rotary cutter. Measurements include ¼" seam allowance. Label, allocate, and organize all cuts as noted.

QUILT



(2) 10" Stackers

Set (63) 10" × 10" squares aside.

Note: The quilt shown uses (65) squares for a larger variety of fabrics, although not all pieces cut from the paper are used in the final quilt.



(5) ⅓ Yard Background Pieces

Cut a total of (17) 10" × 10" squares.

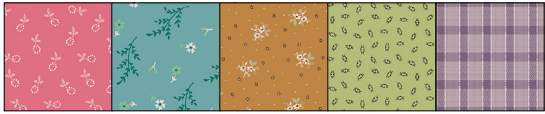


Plum Endearing

Cut (8) 2 ½" × WOF strips. Set aside for binding.

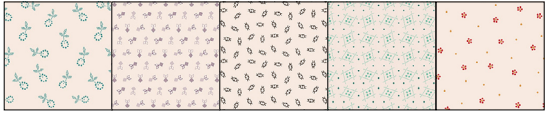
CRAZY PAPER QUILT & RUNNER

RUNNER



(2) 5" Stackers

Set (84) 5" x 5" squares aside.



(18) 5" Background Squares

Set (18) 5" x 5" squares aside.

Note: The quilt shown uses (18) squares for a larger variety of fabrics, although not all pieces cut from the paper are used in the final quilt.



Cozy Whippersnapper

Cut (4) 2 1/2" x WOF strips. Set aside for binding.

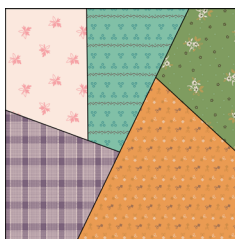
SEWING TECHNIQUES

Sew all seams RST and with a 1/4" seam allowance unless stated otherwise. Refer to the Quilt Layout Diagram and Runner Layout Diagram for placement of the prints. Press seams as desired unless stated otherwise. Dimensions listed in steps are unfinished sizes.

QUILT BLOCK ASSEMBLY

Follow the instructions included in the 10" Crazy Quilt Paper package to make (80) total blocks. Refer to the cover image and Quilt Layout Diagram for fabric combinations and placement of the prints. Square each block using the Lori Holt Cute Cuts™ Trim-it™ Ruler to measure 8 1/2" x 8 1/2".

Make (80)

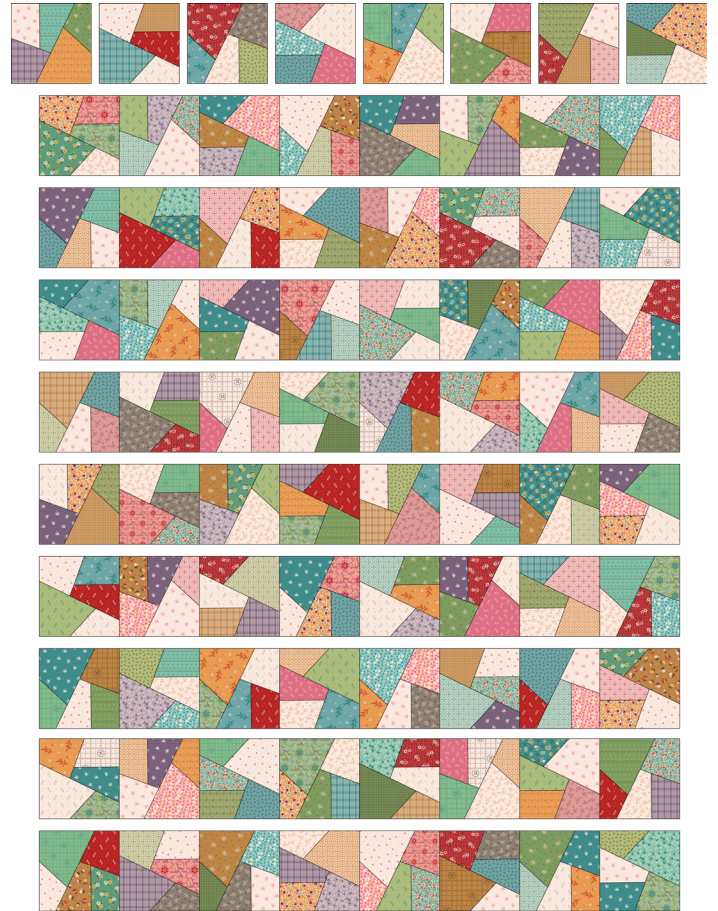


8 1/2" x 8 1/2"

QUILT ASSEMBLY

1. Arrange (80) blocks into 10 rows of 8 blocks as shown below. Rotate each block in various directions. Sew the blocks together into rows. Next, sew the rows together to make the quilt top.

QUILT LAYOUT DIAGRAM



64 1/2" x 80 1/2"

QUILT FINISHING INSTRUCTIONS

2. Layer the quilt top, batting, and backing. Baste quilt layers together and quilt as desired. Add optional trim and finish with the Plum Endearing binding strips. Note: If using the optional trim, cut (4) pieces of Large Latte Vintage Trim the same length as each side of the quilt. Lay the trim even with the raw edges and baste into place, 1/8" from the raw edge. All of the trim should be on the quilt. Bind using your favorite method. An 1/8" of the trim will show on the top of the quilt after binding.

CRAZY PAPER QUILT & RUNNER

RUNNER BLOCK ASSEMBLY

Follow the instructions included in the 5" Crazy Quilt Paper package to make (100) total blocks. Refer to the cover image and Runner Layout Diagram for fabric combinations and placement of the prints. Square each block using the Lori Holt Cute Cuts™ Trim-it™ Ruler to measure $3\frac{1}{2}" \times 3\frac{1}{2}"$.

Make (100)

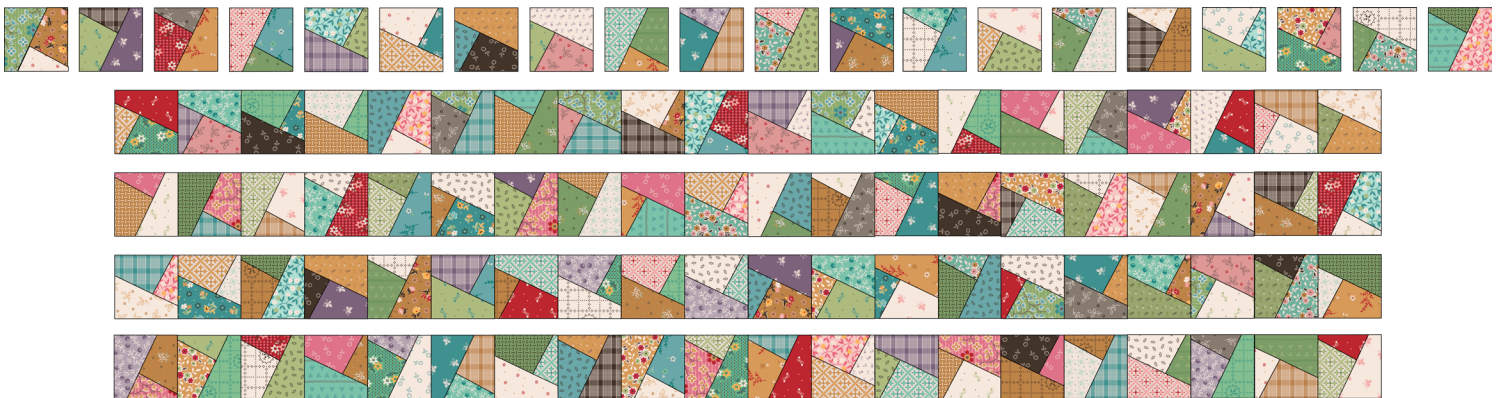


$3\frac{1}{2}" \times 3\frac{1}{2}"$

RUNNER ASSEMBLY

3. Arrange (100) blocks into 5 rows of 20 blocks as shown below. Rotate each block in various directions. Sew the blocks together into rows. Next, sew the rows together to make the runner top.

RUNNER LAYOUT DIAGRAM



$15\frac{1}{2}" \times 60\frac{1}{2}"$

RUNNER FINISHING INSTRUCTIONS

4. Layer the runner top, batting, and backing. Baste runner layers together and quilt as desired. Add optional trim and finish with the Cozy Whippersnapper binding strips. Note: If using the optional trim, cut (4) pieces of Large Cozy Vintage Trim the same length as each side of the runner. Lay the trim even with the raw edges and baste into place, $\frac{1}{8}"$ from the raw edge. All of the trim should be on the runner. Bind using your favorite method. An $\frac{1}{8}"$ of the trim will show on the top of the runner after binding.

Enjoy and share your quilt and runner using the hashtags: [#gentlertimesfabric](#), [#crazypaperquiltandrunner](#), [#rileyblakedesigns](#), and [#iloverileyblake](#).