



Hearts & Flowers Pillowcase

by Barbara Weiland Talbert

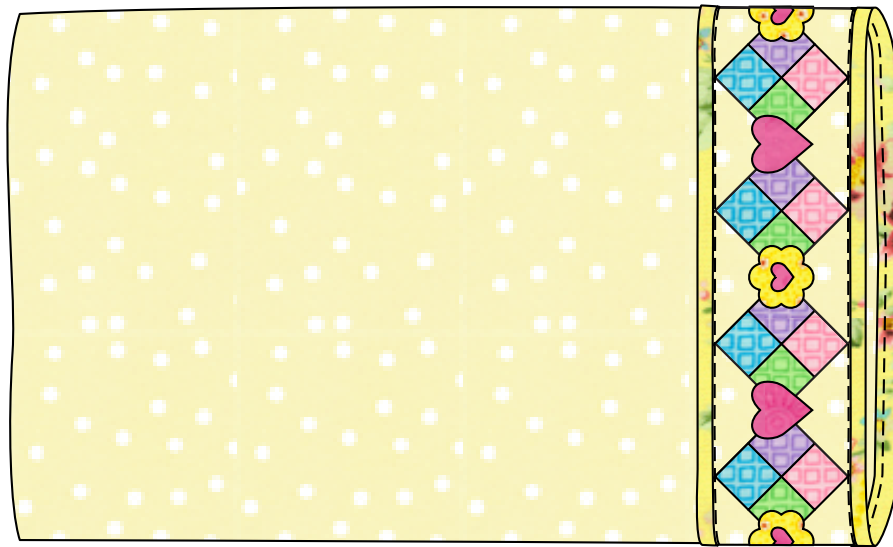


Figure 1

Materials: 44"-wide fabric*

*At least 41" of usable width after preshrinking

1 1/4 yards tone-on-tone print for the pillowcase and the setting triangles

1/4 yard each of 4 different prints for the Fourpatch blocks

Fabric scraps for the heart and flower appliques

1/8 yard print for the binding

Fusible web

Cutting and Making the Band

All seam allowances are 1/4" wide.

Cut all strips across the fabric width.

1. From the pillowcase fabric, cut 1 strip, 6 1/4" wide. Set the remaining fabric aside for the pillowcase.
2. From the strip, crosscut 4 squares, each 6 1/4" x 6 1/4". Cut in half twice diagonally for a total of 16 setting triangles.

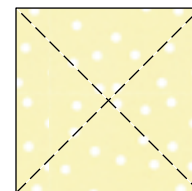
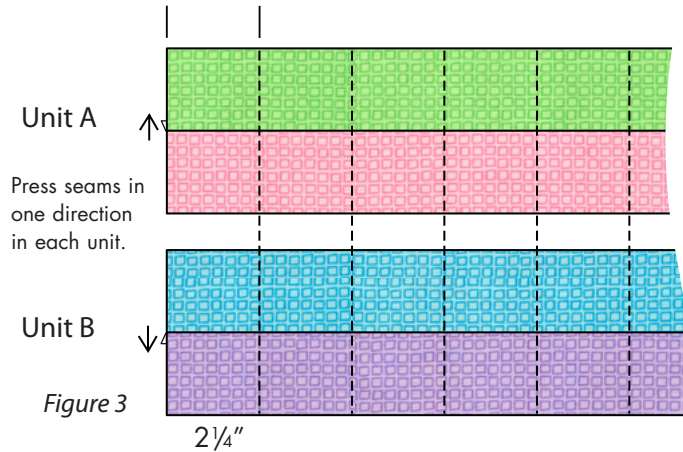


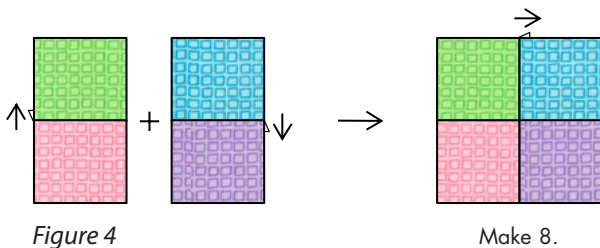
Figure 2



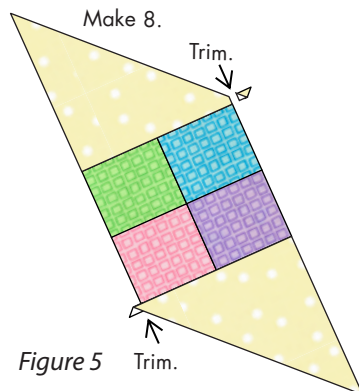
- From each of the four prints, cut 1 strip, 2 1/4" x 20". Arrange the strips in pairs and sew together to create Units A and B. Press the seam in one direction in each strip set. From each strip set, cut 8 segments, each 2 1/4" wide.



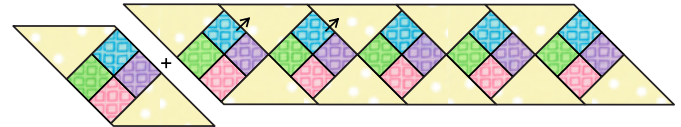
- Sew the segments together in pairs to create 8 identical Four-patch blocks. Press the seam in one direction.



- Sew two setting triangles to each Four-patch block as shown. Trim. Press all seams toward the setting triangles. Trim the excess triangle points even with the Four-patch block edges as shown.



- Arrange the units from step 5 in a row as shown. Sew the units together to make one long strip with angled edges at both ends. Press all seams in same direction. Sew the pieces together to make one long patchwork strip. Press the seams toward the setting triangles.



Sew 8 units together and press all seams in the same direction.

Figure 6

- Trace 4 each of the large and small hearts and the flower appliqués (on page 3) onto the paper side of the fusible web, leaving 1/2" of space between the shapes. Cut out, leaving a 1/4"-wide margin beyond the drawn lines on each one.
- Apply each shape to the wrong side of the desired appliqué fabric scrap, following the manufacturer's directions. Cut out on the drawn lines.
- In alternating fashion, position the large heart and the flower appliqués with a small heart in the center on the band over the block point intersections. You will have one flower or large heart appliqué remaining; set aside until the band ends are joined in step 11. Fuse appliqués in place following the manufacturer's directions.
- With matching or contrasting thread, satin stitch or appliqué stitch over the raw edges of each appliqué.

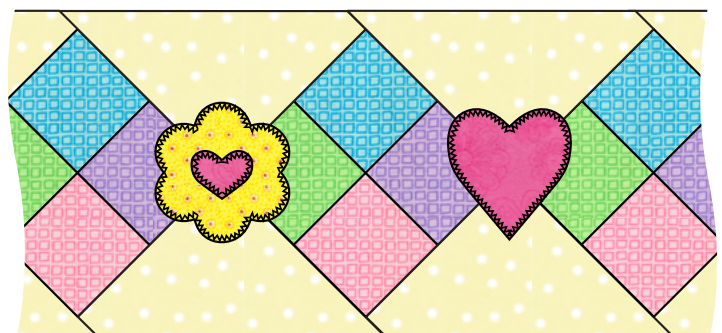


Figure 7



11. With right sides together, sew the band ends together to make a circle. Add the final appliqué, fuse, and stitch.
12. Cutting across the fabric width, cut 1 strip 1 1/4" wide from the binding fabric for the inner-edge binding on the patchwork band. Cut one strip 2 1/4" wide for the outer-edge band binding and set aside.
13. Turn under and press 1/4" at one short end of the 1 1/4"-wide binding strip. With right sides together, pin and stitch the strip to the upper edge of the patchwork band, overlapping the end and trimming any excess. Press the strip toward the seam allowance, then wrap it to the underside over the seam edge. Press. Machine-baste in the ditch of the seam from the right side to catch the underside of the binding.



Figure 8

3. Fold the piece in half with right sides facing and raw edges matching; and stitch the end and side seam. Zigzag or serge the seam layers together to finish. Turn the pillowcase right side out.
4. Slip the band over the pillowcase with raw edges even. Machine-baste 1/4" from the raw edges. Stitch-in-the-ditch of the binding seam to secure the upper edge of the band to the pillowcase.

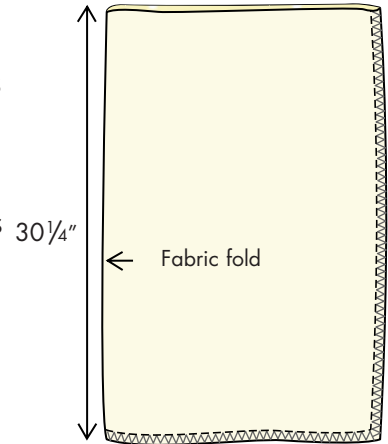


Figure 9

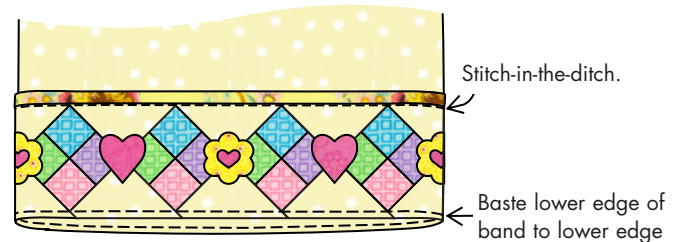


Figure 10

Completing the Pillowcase

All seam allowances are 1/4" wide.

1. Measure the distance around the raw edge of the completed patchwork band and add 1/2" for seam allowances (approximately 40 1/2", depending on your cutting and stitching accuracy).
2. Trim the remaining pillowcase fabric so that it measures 30 1/4" by the measurement determined in step 1.
5. Fold the 2 1/4"-wide binding strip in half lengthwise with wrong sides together and raw edges even. Press. Turn in one end at a 45-degree angle; trim excess, leaving a 1/4"-wide allowance.
6. With raw edges even, pin and stitch the strip to the pillowcase edge, using a 1/4"-wide seam. Press the binding toward the seam allowance, then wrap it to the underside over the seam edge and pin in place.



- 7. Stitch-in-the-ditch from the right side of the pillowcase to catch the underside of the binding—or sew the binding in place by hand on the inside.

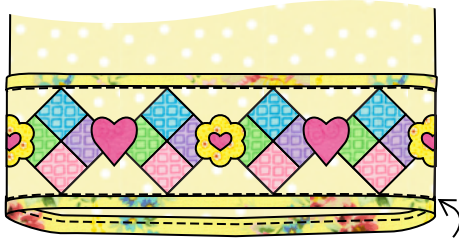
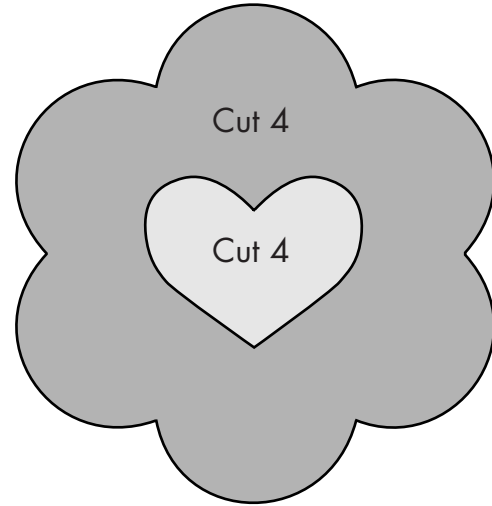
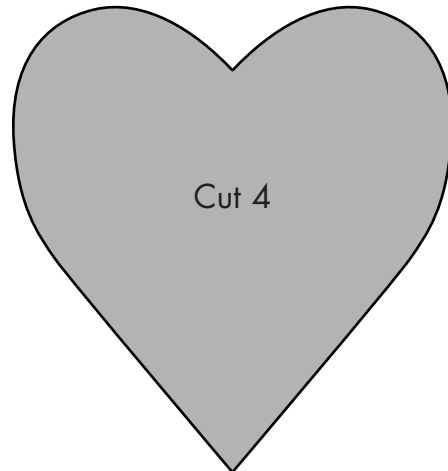


Figure 11

Stitch-in-the-ditch.



- 8. Sweet dreams!



www.fabshopnet.com
The fabric shop network™ Inc.
 ...the trade organization for independent quilt and fabric retailers.