



{ FEATURING INDIAN SUMMER COLLECTION }



Art Gallery
FABRICS

FREE PROJECT SHEET

DESIGNED BY SARAH WATSON

TEPEE ADVENTURES

FINISHED SIZE: 53" x 73"

To download the instructions for this pattern visit

artgalleryfabrics.com

ADDITIONAL BLENDERS USED



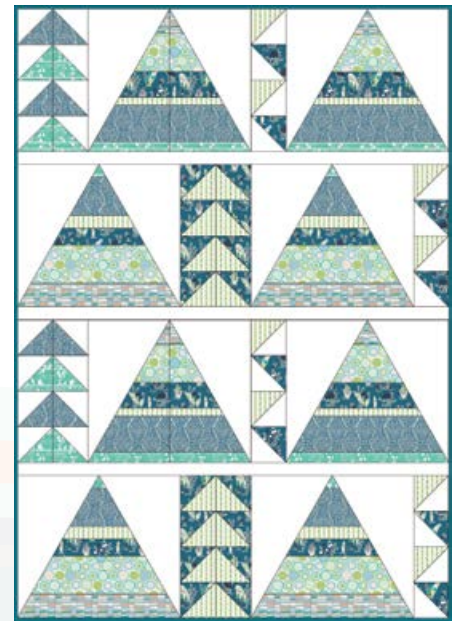
PE-433 Snow



PE-428 Nocturnal



PE-418 Tile Blue



COLOR OPTION

INDIAN summer by SARAH WATSON

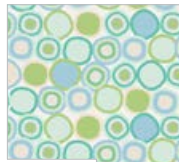
SPIRIT LAKE



IS-50010
Woodland Pine



IS-50015
Forest Trail Waterfall



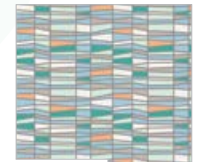
IS-50013
Bullseye Mint



IS-50011
Menagerie Timberwolf



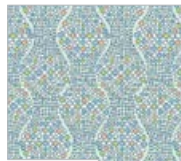
IS-50019
Wilderness Rock



IS-50018
Basket of Thyme



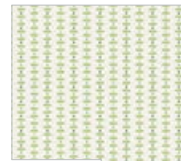
IS-50014
Native Band Jade



IS-50017
Pebbled Path River



IS-50012
Shimmer Creek Aqua



IS-50016
Drops of Dew

COLOR OPTION KIT QUANTITY

IS-50014	1/2 yd.	IS-50018	3/8 yd.
IS-50016	1/2 yd.	PE-433	1 3/4 yd.
IS-50017	2/3 yd.	PE-418	3/8 yd.
IS-50015	1/2 yd.	Backing	3 yd.
IS-50013	1/2 yd.		

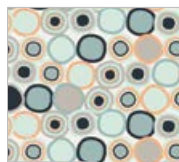
MYSTIC MOUNTAIN



IS-60010
Woodland Oak



IS-60015
Forest Trail Mountain



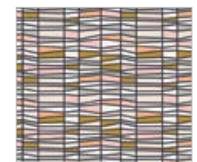
IS-60013
Bullseye Melon



IS-60011
Menagerie Onyx



IS-60019
Wilderness Rose



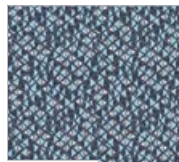
IS-60018
Basket of Wheat



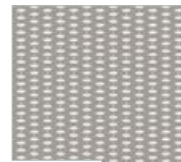
IS-60014
Native Band Apricot



IS-60017
Pebbled Path Terra



IS-60012
Shimmer Creek Blue



IS-60016
Drops of Clay

KIT QUANTITY

IS-60014	1/2 yd.	IS-60018	3/8 yd.
IS-60016	1/2 yd.	PE-433	1 3/4 yd.
IS-60017	2/3 yd.	PE-428	3/8 yd.
IS-60015	1/2 yd.	Backing	3 yd.
IS-60013	1/2 yd.		

DESIGNED BY SARAH WATSON

TEPEE ADVENTURES

FINISHED SIZE: 53" x 73"

To download the instructions for this pattern visit

artgalleryfabrics.com

FABRIC REQUIREMENTS

Fabric A	IS-60014	1/2 yd.
Fabric B	IS-60016	1/2 yd.
Fabric C	IS-60017	2/3 yd.
Fabric D	IS-60015	1/2 yd.
Fabric E	IS-60013	1/2 yd.
Fabric F	IS-60018	3/8 yd.
Fabric G	PE-433	1 3/4 yd.
Fabric H	PE-418	3/8 yd.
Fabric I	PE-428	3/8 yd.

Backing Fabric

3 yds IS-60011. (suggested)
plus left overs of the fabrics required above. See instructions.

Binding Fabric

PE-428 (Fabric **I**) (included)

for the color option of this quilt do a direct color palate replacement except where specified by a box like this one

YOU WILL NEED A 60° RULER IN ORDER TO COMPLETE THIS QUILT

FABRICS DESIGNED BY SARAH WATSON
QUILT CONSTRUCTED BY PRISCILLA RAMIREZ FOR
ART GALLERY FABRICS



CUTTING DIRECTIONS

1/4" seam allowances are included.

FOR THE PIECED TRIANGLES BLOCK CUT

- Three (3) 2" x WOF strips from fabric **A**
- Three (3) 5" x WOF strips from fabric **C**
- Three (3) 2" x WOF strips from fabric **B**
- Three (3) 2 1/2" x WOF strips from fabric **D**
- Three (3) 5" x WOF strips from fabric **E**
- Three (3) 3 1/2" x WOF strips from fabric **F**
- Eight (8) 17 5/8" x 10 1/2" rectangles from fabric **G**

sub-cut four diagonally going up from left to right and four going down from left to right

FOR FLYING GEESE COLUMNS CUT

- Eight (8) 5" x 5" squares from fabric **G**
- Four (4) 5" x 5" squares from fabric **C**
- Four (4) 5" x 5" squares from fabric **A**
- Eight (8) 5" x 5" squares from fabric **D**
- Eight (8) 5" x 5" squares from fabric **B**

sub-cut ALL squares diagonally

FOR HALF-SQUARE TRIANGLES COLUMNS

- Four (4) 5" x 5" squares from fabric **B**
- Four (4) 5" x 5" squares from fabric **D**
- Eight (8) 5" x 5" squares from fabric **G**

sub-cut ALL squares diagonally

FOR SASHING CUT

- Three (3) 2" x 28 1/4" strips from fabric **G**
- Three (3) 2" x 24 1/4" strips from fabric **G**

SPECIAL PIECES FOR BACKING

use remaining fabric to cut:

- One(1) 6" x WOF strip from fabric **A**
- One(1) 6" x 14 5/8" strip from fabric **A**
- One(1) 6" x 4 1/2" rectangle from fabric **B**
- One(1) 6" x 9 1/2" rectangle from fabric **B**
- One(1) 6" x WOF strip from fabric **C**
- One(1) 6" x 14 5/8" strip from fabric **C**
- One(1) 6" x 9 1/2" rectangle from fabric **E**
- One(1) 6" x 4 1/2" rectangle from fabric **E**

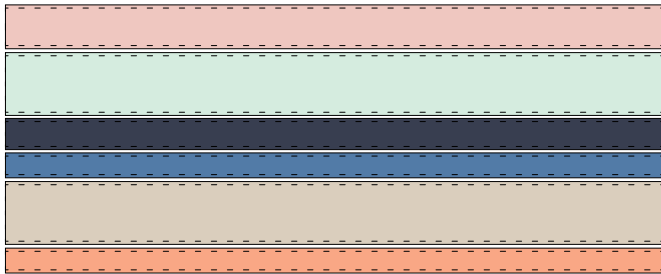
BLOCK CONSTRUCTION

Sew all rights sides together with $\frac{1}{4}$ " seam allowance. Press open.

Pieced Triangles Block

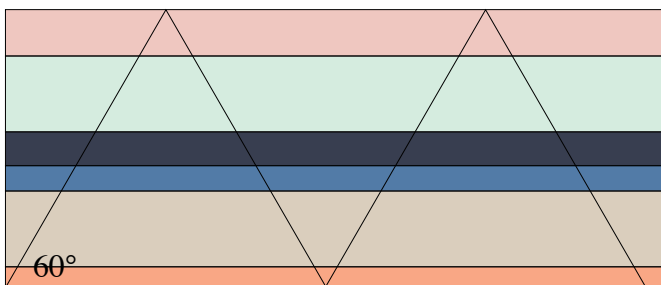
- Separate all the pieces you cut under "For The Pieced Triangles Block Cut" into three equal groups.
- Grab all of the strips from one group and sew them in the order **FEDBCA** (DIAGRAM 1)

(DIAGRAM 1)



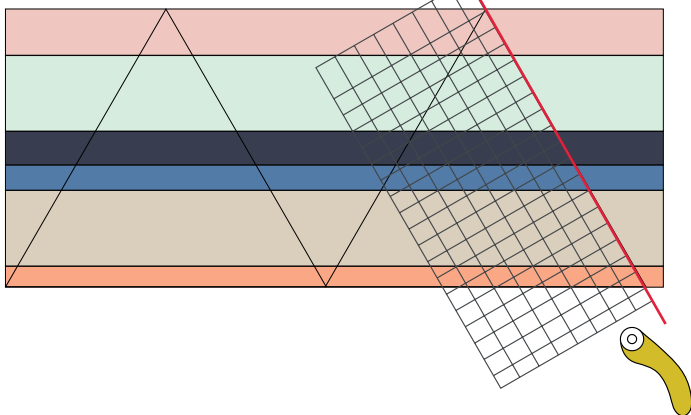
- Grab a 60° ruler and trace a line from the left corner up. From that point trace a 120° line to create a triangle. Repeat the two previous steps (DIAGRAM 2).

(DIAGRAM 2)



- Using the ruler and a rotary cutter, carefully cut through the lines drawn on the previous step to obtain three pieced triangles (DIAGRAM 3).

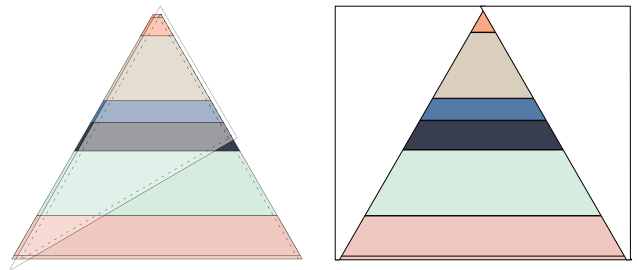
(DIAGRAM 3)



- Repeat the previous steps with the two remaining groups. You will have nine triangles but you will only need eight. Four with Fabric F as the base and four with Fabric A as the base.

- Grab the Fabric G triangles obtained when you cut the rectangles on the diagonal and attach one triangle to each side of the pieced triangle pieces (DIAGRAM 4).

(DIAGRAM 4)

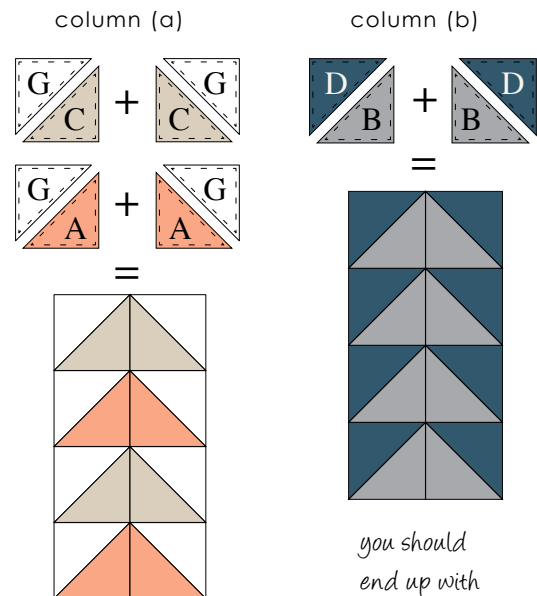


Flying Geese Columns

Sew all rights sides together with $\frac{1}{4}$ " seam allowance. Press open.

- There are two different types of Flying Geese Columns.
- Grab all of the pieces cut under "For Flying Geese Columns Cut" and pair the triangles following the diagram (DIAGRAM 5).

(DIAGRAM 5)



you should end up with two of these



Half-Square Triangles Columns

Sew all rights sides together with $\frac{1}{4}$ " seam allowance. Press open.

- Grab all of the pieces cut under "For Half-square Triangles Columns" and pair the triangles following the diagram (DIAGRAM 6).

(DIAGRAM 6)



you should end up with two of these

SASHING ASSEMBLY

Sew all rights sides together with $\frac{1}{4}$ " seam allowance. Press open.

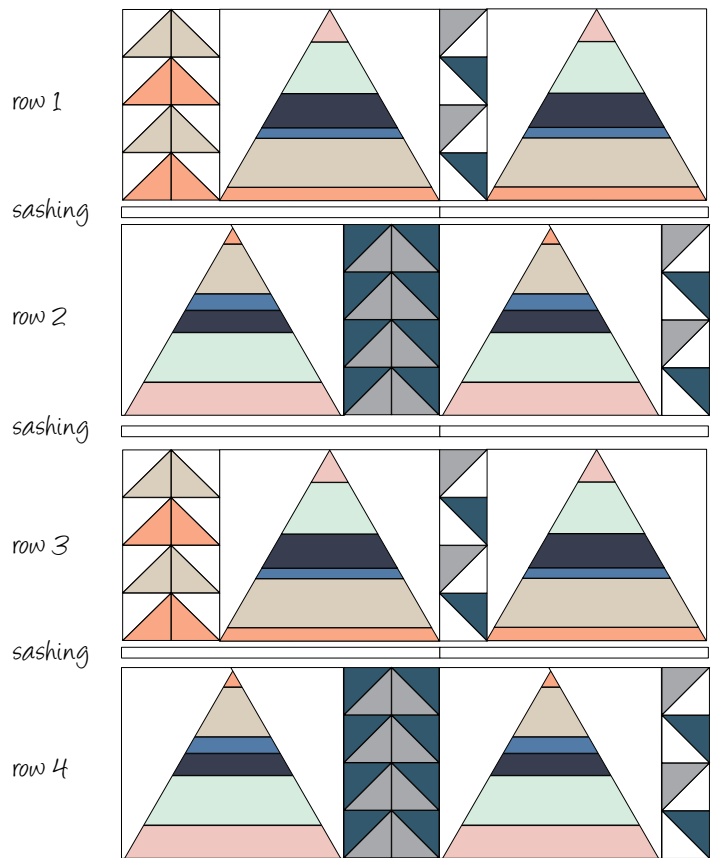
- Make three groups each containing one 2" x 28 $\frac{1}{4}$ " strip from fabric G and one 24 $\frac{1}{4}$ " strip from fabric G
- Sew each group as to create a longer strip.
- Make sure the shorter strip falls to the right when the right-side of the fabric is facing up.

ASSEMBLING THE TOP

Sew all rights sides together with $\frac{1}{4}$ " seam allowance. Press open.

- Follow the cover photo to aid you in assembling this quilt top.
- This top can be divided into four main rows, each containing one Flying Geese Column, two Pieced Triangles Blocks and one Half-square Triangles Column.
- In between rows you should insert a sashing strip making sure that the seam falls exactly matching the seams from the main rows (DIAGRAM 7).

(DIAGRAM 7)

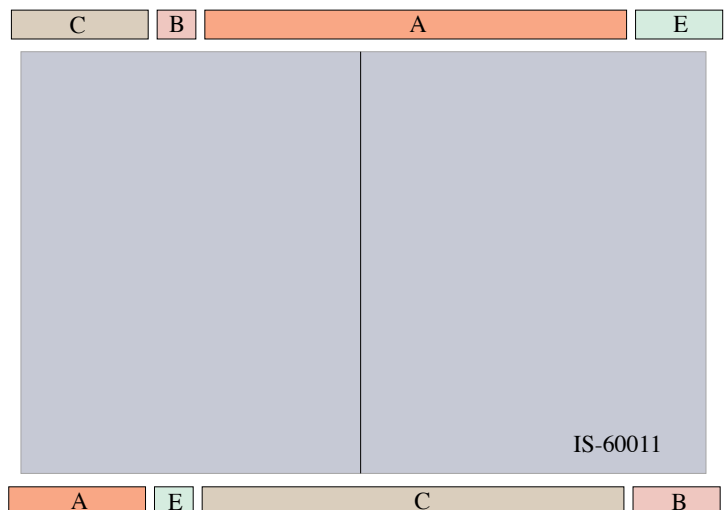


BACKING ASSEMBLY

Sew all rights sides together with $\frac{1}{4}$ " seam allowance. Press open.

- These are the instructions for the backing designed by Sarah Watson, but please remember that this is only a suggestion.
- Grab the 3 yds of IS-60011 and all the pieces cut under "Special Pieces for Backing". Cut the 3 yards in half and sew them on the selvage. Grab the small pieces and create two long pieces. Attach the pieces on each of the longer sides of the main piece following the diagram (DIAGRAM 8).

(DIAGRAM 8)



QUILT ASSEMBLY

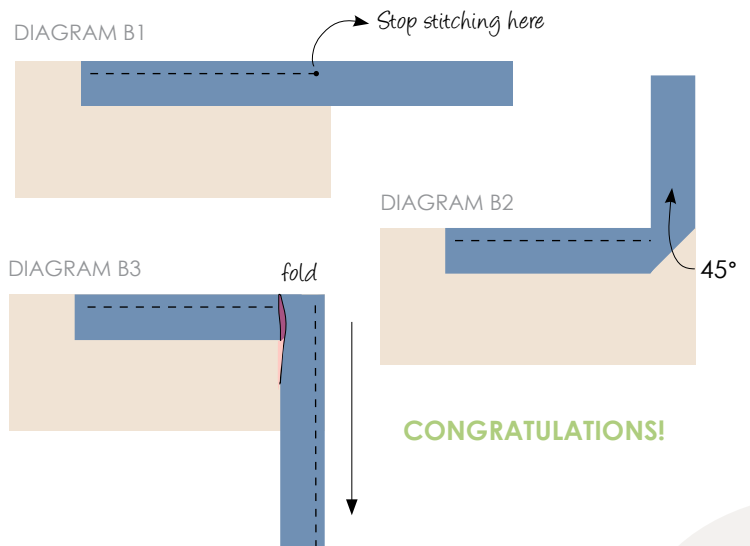
Sew right sides together.

- Place BACKING FABRIC on a large surface wrong side up. Stretch it with masking tape against that surface.
- Make sure that you center the top and the backing since this quilt has the special design for the backing
- Place BATTING on top of backing fabric.
- Place TOP on top of the batting with right side facing up. Smooth away wrinkles using your hands.
- Pin all layers together and baste with basting thread, using long stitches. You can also use safety pins to join the layers.
- Machine or hand quilt starting at the center and working towards the corners. Remember that quilting motives are a matter of personal preference. Have fun choosing yours!
- After you finished, trim excess of any fabric or batting, squaring the quilt to proceed to bind it.

BINDING

Sew right sides together.

- Cut enough strips 1½" wide by the width of the fabric **I** to make a final strip 262" long. Start sewing the binding strip in the middle of one of the sides of the quilt, placing the strip right side down and leaving an approximated 5" tail. Sew with ¼" seam allowance (using straight stitch), aligning the strip's raw edge with the quilt top's raw edge.
- Stop stitching ¼" before the edge of the quilt (DIAGRAM B 1). Clip the threads. Remove the quilt from under the machine presser foot. Fold the strip in a motion of 45° and upward, pressing with your fingers (DIAGRAM B2). Hold this fold with your finger, bring the strip down in line with the next edge, making a horizontal fold that aligns with the top edge of the quilt (DIAGRAM B3). Start sewing at ¼" of the border, stitching all the layers. Do the same in the four corners of the quilt.
- Stop stitching before you reach the last 5 or 6 inches. Cut the threads and remove the quilt from under the machine presser foot. Lay the loose ends of the binding flat along the quilt edge, folding the ends back on themselves where they meet. Press them together to form a crease. Using this crease as the stitching line, sew the two open ends of the binding with right sides together (you can help yourself marking with a pencil if the crease is difficult to see).
- Trim seam to ¼" and press open. Complete the sewing. Turn binding to back of the quilt, turn raw edge inside and stitch by hand using blind stitch.



CONGRATULATIONS!



Feel the difference

For wholesale visit:

artgalleryfabrics.com

NOTE: While all possible care has been taken to ensure the accuracy of this pattern, we are not responsible for printing errors or the way in which individual work varies. Please read instructions carefully before starting the construction of this quilt. If desired, wash and iron your fabrics before starting to cut.

© 2013 Courtesy of Art Gallery Quilts LLC.
All Rights Reserved.

