

Sweet Dreams

35 1/2" x 47 1/2"
Skill Level: Beginner

featuring "Prairie Yard Goods" by Patrick Lose for RJR Fabrics

	Sugar	Spice
White Suds #2070-12	1 7/8 yards	1 7/8 yards
Fabric A - fat quarter	#2312-03	#2312-02
Fabric B - fat quarter	#2314-03	#2314-02
Fabric C - fat quarter	#2316-31	#2318-11
Fabric D - fat quarter	#2313-03	#2313-02
Fabric E - fat quarter	#2315-03	#2315-02
Stripe - 7/8 yard	#2317-03	#2317-02
Backing:	1 5/8 yards	1 5/8 yards
Batting:	44" x 56"	44" x 56"

Notions: Thread for piecing and quilting.

Batting is Warm Blend® by The Warm Company

Designed by Christine Stainbrook

The information in this pattern is presented in good faith.
Every effort has been taken to assure the accuracy herein.
This pattern may not be reproduced in any form, either electronic or hard copy.
The finished product may not be used for mass retail, commercial, or
wholesale purposes, markets, or trade shows without written permission.

© 2015 Project House 360

Sweet Dreams



A Project House 360 Quilt Pattern
featuring collections from



**Fat Quarter
Friendly**

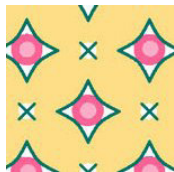
Sweet Dreams

Color Card

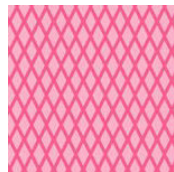
Sugar



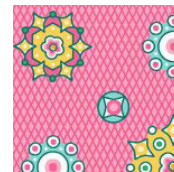
Fabric A
#2312-03



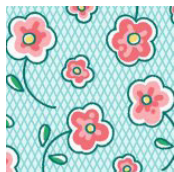
Fabric B
#2314-03



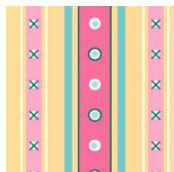
Fabric C
#2316-31



Fabric D
#2313-03



Fabric E
#2315-03



Stripe
#2317-03

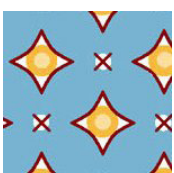


White Suds
#2070-12

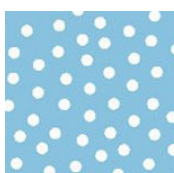
Spice



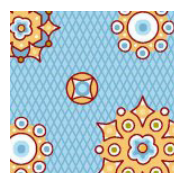
Fabric A
#2312-02



Fabric B
#2314-02



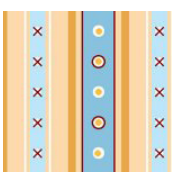
Fabric C
#2318-11



Fabric D
#2313-02



Fabric E
#2315-02



Stripe
#2317-02



White Suds
#2707-12

Cutting:

Fabric A:

6 - 3 1/2" squares
6 - 2 3/8" squares

Fabric B:

6 - 3 1/2" squares
6 - 2 3/8" squares

Fabric C:

34 - 2 3/8" squares

Fabric D:

6 - 3 1/2" squares
6 - 2 3/8" squares

Fabric E:

6 - 3 1/2" squares
6 - 2 3/8" squares

Stripe:

5 - 1 3/4" x WOF (width of fabric)
5 - 2 1/2" x WOF (for binding)

White Suds:

96 - 2" x 3 1/2"
48 - 2" squares
48 - 2 3/8" squares
4 - 2" x 6 1/2"
6 - 2" x 9 1/2"
4 - 2" x 5"
9 - 2" x WOF

NOTE: Sugar colorway is shown throughout.

Blocks:

Make 6

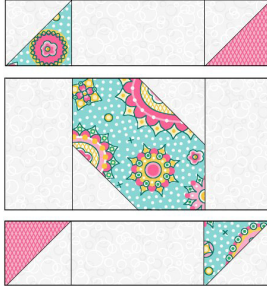
Cut 6 fabric A and 6 white suds 2 3/8" squares once diagonally. Stitch together in pairs to make 12 half-square triangle units. Square to 2". Repeat with 6 fabric C and 6 white suds 2 3/8" squares.



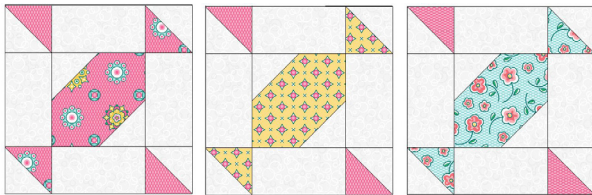
Draw a diagonal line on 12 white suds 2" squares. Stitch to the fabric A 3 1/2" squares, sewing on the drawn line. Cut away excess, leaving a 1/4" seam allowance. Press triangles outward. Square to 3 1/2".



Combine the half-square triangle units with the center units and 4 white suds $2'' \times 3 \frac{1}{2}''$ rectangles. Square to $6 \frac{1}{2}''$. Make 6.



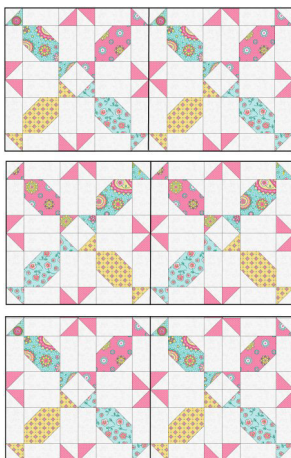
Repeat these steps to make six blocks each from fabrics B, D and E. This will make 24 blocks in total.



Join the small blocks together to make six large blocks as shown. Square to $12 \frac{1}{2}''$.



Join the large blocks together to complete the center of the quilt.



Assembly:

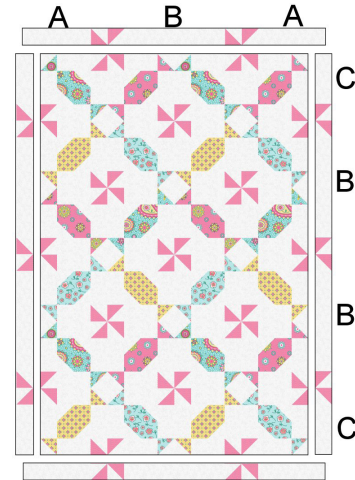
Cut the remaining white suds and fabric C $2 \frac{3}{8}''$ squares once diagonally. Stitch together in pairs to make half-square triangle units. Square to $2''$. Make 20 units.

Add to the quilt, along with the white suds strips as shown.

A= white suds $2'' \times 6 \frac{1}{2}''$

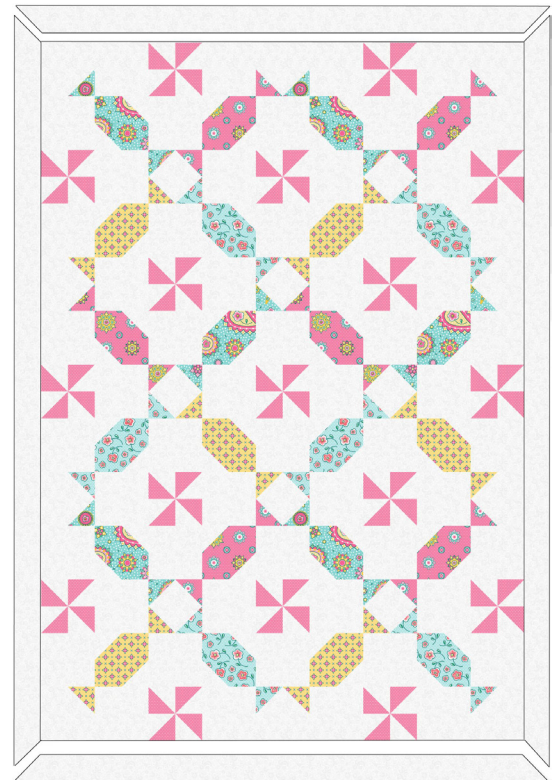
B= white suds $2'' \times 9 \frac{1}{2}''$

C= white suds $2'' \times 5''$



Add four white suds $2'' \times \text{WOF}$ strips to the quilt, mitering corners.

Cut one stripe $1 \frac{3}{4}'' \times \text{WOF}$ strip in half. Stitch a whole strip to each cut piece. Add to the sides of the quilt. Add a whole stripe $1 \frac{3}{4}'' \times \text{WOF}$ strip to the top and bottom of the quilt, mitering corners.



Repeat the last step using 5 white suds $2'' \times \text{WOF}$ strips.

Layer, baste and quilt as desired.

Bind with the stripe $2 \frac{1}{2}'' \times \text{WOF}$ strips.