

✳️  
LAUGHTER  
(NOT INCLUDED)



# PRINCESS TEA PARTY SET



WANDS



QUILTED CROWNS



CHAIR SEAT COVERS



REVERSIBLE TABLE CLOTH



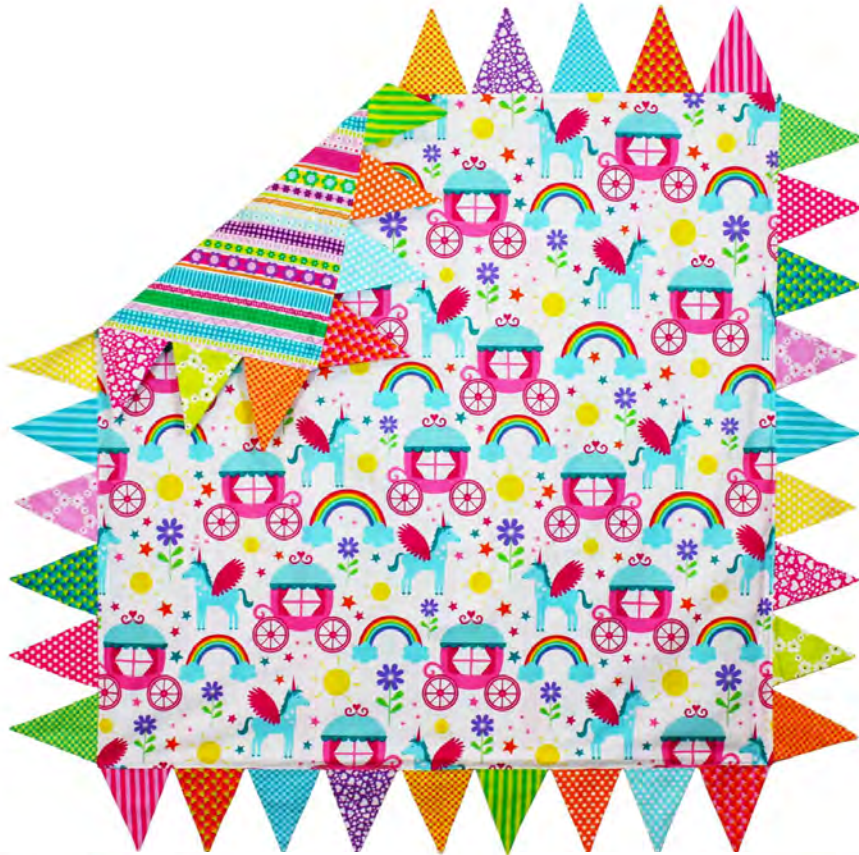
COORDINATING  
**ENCHANTED CASTLE** QUILT  
FREE PATTERN ONLINE!

michael miller FABRICS

LAUGHTER  
(NOT INCLUDED)



# PRINCESS TEA PARTY SET





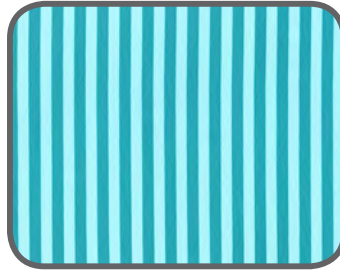
# FABRIC REQUIREMENTS



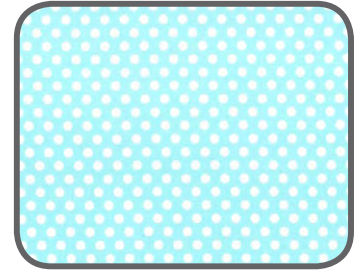
**CX6339 Princess  
Rainbows and Unicorns**



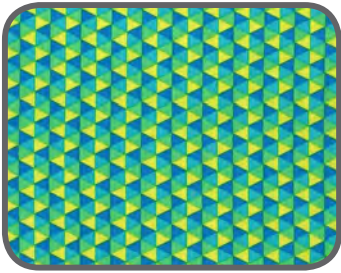
**CX5895 Pink  
Small World Stripe**



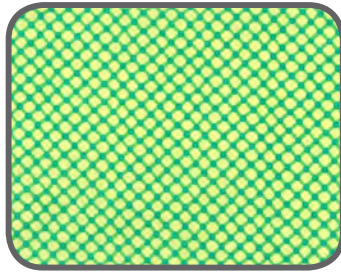
**CX3584 Luna  
Clown Stripe**



**CX5518 Aqua  
Kiss Dot**



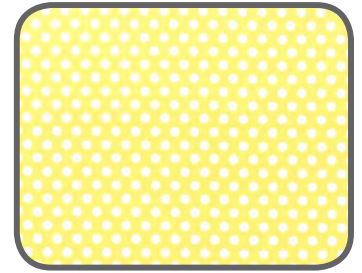
**CX5916 Lagoon  
Polygon**



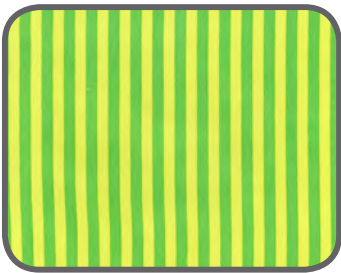
**CX5911 Green  
Cora**



**CX5912 Lime  
Jemma**



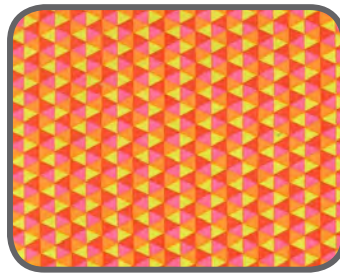
**CX5518 Yellow  
Kiss Dot**



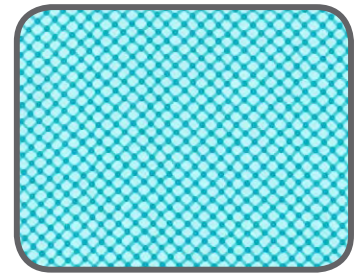
**CX3584 Mint  
Clown Stripe**



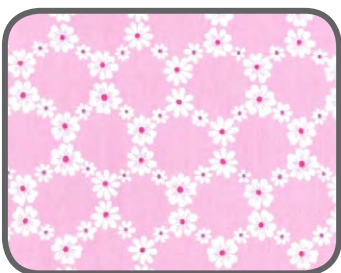
**CX5911 Orange  
Cora**



**CX5916 Sorbet  
Polygon**



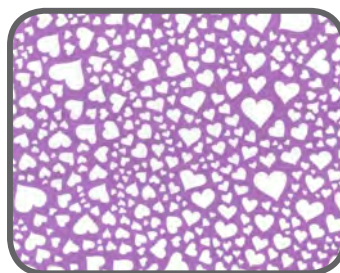
**CX5911 Aqua  
Cora**



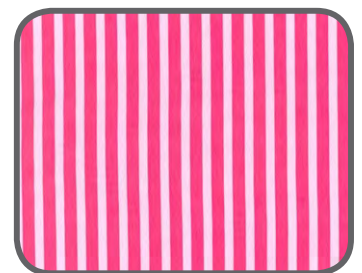
**CX5912 Orchid  
Jemma**



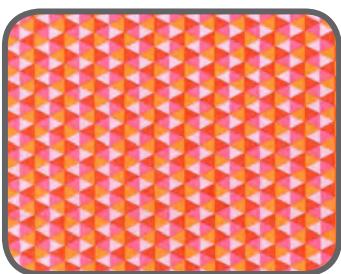
**CX5518 Blossom  
Kiss Dot**



**CX2504 Violet  
Zillion Hearts**



**CX3584 Girl  
Clown Stripe**



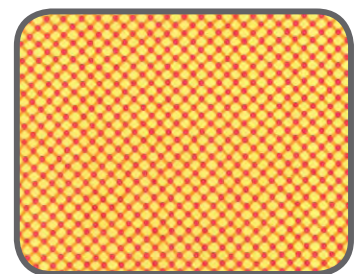
**CX5916 Watermelon  
Polygon**



**CX5920 Raspberry  
Hearts All Over**



**CX5518 Orange  
Kiss Dot**



**CX5911 Sunshine  
Cora**

**"Princess Tea Party - Table Cloth"**  
Everything designed by Marinda Stewart

Size: Approximately 36" x 36" Skill Level : Confident Beginner

**Materials**

Fabric	Yardage	Cutting
CX6339 Princess Rainbows and Unicorns	1 1/8 yards of each pattern	(1) 36 1/2" square each pattern
CX5895 Pink Small World Stripe		
CX3584 Luna Clown Stripe	6" x 12" piece of each color	(4) Triangles of each color – see directions
CX5518 Aqua Kiss Dot		
CX5916 Lagoon Polygon		
CX5911 Green Cora		
CX5912 Lime Jemma		
CX5518 Yellow Kiss Dot		
CX3584 Mint Clown Stripe		
CX5911 Orange Cora		
CX5916 Sorbet Polygon		
CX5911 Aqua Cora		
CX5912 Orchid Jemma		
CX5518 Blossom Kiss Dot		
CX2504 Violet Zillion Hearts		
CX3584 Girl Clown Stripe		
CX5916 Watermelon Polygon		
CX5920 Raspberry Hearts All Over		
CX5518 Orange Kiss Dot		
CX5911 Sunshine Cora		

## Disclaimers

Disclaimer: Material lists are written for each project so they can be made individually without making the entire ensemble. To make everything add the yardage required for each fabric in all the projects to get the total amount.

## Directions:

IMPORTANT: Entire project includes (1) 36" square reversible tablecloth, (4) different tie-on quilted crowns, (4) wands, and (4) children's chair seat covers. \*\*

\*\* Chair seat covers may also be used as a tea cozy

For triangular fringe, cut (4) triangles from each of the (18) following fabrics: CX3584 Clown Stripe/Luna, CX5518 Kiss Dot/Aqua, CX5916 Polygon/Lagoon, CX5911 Cora/Green, CX5912 Jemma/Lime, CX5518 Kiss Dot/Yellow, CX3584 Clown Stripe/Mint, CX5911 Cora/Orange, CX5916 Polygon/Sorbet, CX5911 Cora/Aqua, CX5912 Jemma/Orchid, CX5518 Kiss Dot/Blossom, CX2504 Zillion Hearts/Violet, CX3584 Clown Stripe/Girl, CX5916 Polygon/Watermelon, CX5518 Kiss Dot/Blossom, CX5518 Kiss Dot Orange, and CX5911 Cora/Sunshine. 7" x 14" piece of each fabric is needed.

1. For one triangle – place (2) of the same fabric triangles right sides together. Stitch along the two angled sides. Clip the seams at the tip. Turn to the right side. Press. Make (2) of each color – (36) total lined triangles.
2. With the points of the triangles to the inside, align the raw edges of (9) triangles with the raw edges on the CX6339 36 1/2" square. Pin in place. Repeat for the remaining (3) sides. Topstitch in place 1/8" from the edge on all sides.
3. Place CX5895 right sides together on top of the 36 1/2" square. (All triangles to the inside). Stitch 1/4" from the edge on all four sides leaving a 5"-6" opening for turning. Trim corners. Turn to the right side. Press. Slip stitch opening closed. Topstitch 1/8" from the seam on all sides to finish. Tablecloth is reversible.

### "Princess Tea Party - Magic Wands (Four different wands)"



Fabric	Yardage	Cutting
CX2504 Violet Zillion Hearts	5" x 9" piece *	(2) Large Hearts
CX5518 Blossom Kiss Dots	2" x 4" piece *	(2) Small Hearts
* Or use scraps from one of the other projects		
Also Needed: Needle punched batting, fusible web, threads to match, 24" long 3/8" wooden dowel (OPTIONAL - gold painted), (2) yards metallic curly ribbon, hot glue gun with gluestick, and small amount of fiberfill.		

### Directions:

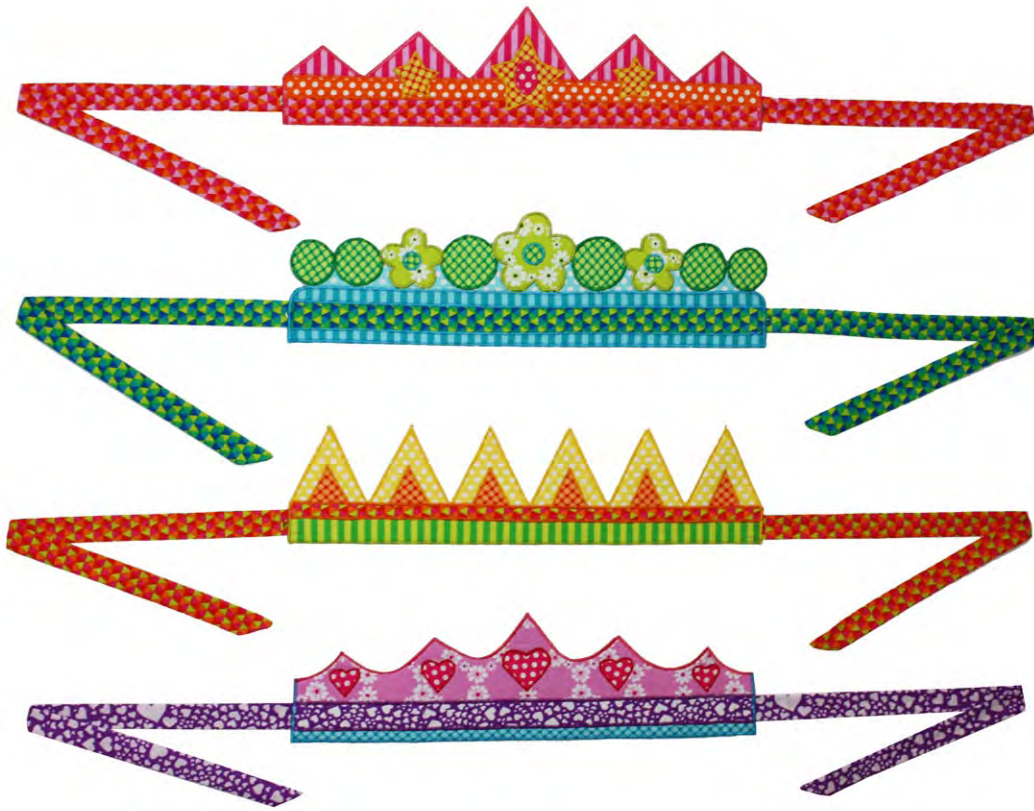
1. Following manufacturer's directions iron fusible web onto the back of CX5518 Blossom. Cut out (2) small hearts from the pattern. Fuse to the center of the CX2504 Violet large heart. Machine applique in place.
2. Topstitch CX2504 Violet hearts to the batting 1/8" from the edge. Cut out even with the fabric. Make (2).
3. Using a wide satin stitch, stitch each heart between the small marks ('|'| indicated as the opening at the tip of the heart.
4. Place hearts wrong sides together. Pin in place. Topstitch together 1/8" from the edge around the outside. Using a wide satin stitch, stitch together through all layers. For a cleaner edge repeat a second time.
5. Lightly stuff the heart with fiberfill. Set aside.
6. Cut curly ribbon into (4) equal lengths. Tie a knot in the center. Glue to the top of the wooden dowel.
7. Insert dowel into the opening at the bottom of the heart approximately 1 1/2" - 2". Glue opening shut.
8. Using a scissors blade curl the ends of each ribbon tendril.
9. Fabric requirements are the same for each wand or use scraps from the other princess projects.
10. Repeat for each wand using CX5912 Jemma/Lime and CX5911 Cora/Green for the 'flower' wand. Use CX5518 Kiss Dot/Yellow and CX5911 Cora/Orange for the 'sun' wand and use CX5911 Cora/Sunshine and CX5518 Kiss Dot/Blossom for the 'star' wand.

### "Princess Tea Party - Princess Crowns"

Size: Approximately 5" x 18"

Skill Level: Confident Beginner

**Materials: Fabrics** - for each crown design (see list below). Double-sided fusible stiff interlacing (i.e. Fast2Fuse/Timtex) non-stick pressing sheet, scissors, straight pins, rotary cutter, threads to match, acrylic ruler, and mat.



## Directions:

1. Refer to a crown pattern (star sun, heart, or flower) and cut the correct number and width of 18" lengths of fabric for the lower half of the crown. Set aside.
2. Trace the correct pattern pieces for the decorative top of the crown onto the wrong side of each fabric. Cut out.
3. Place fusible interfacing on top of the non-stick pressing sheet. Working from the bottom of the crown up, layer the 18" strips in the designated sequence. Add the decorative top of the crown. Lightly fuse in place without touching the uncovered parts of the fusible interfacing. Carefully cut out the irregular top edge of the crown even with the fabric. Set aside.
4. For the applied details, trace the appropriate pattern pieces onto the the paper side of fusible web. Rough cut out. Iron onto the wrong side of the designated fabric. Cut out on the pattern lines. Remove the paper backing and iron the motif onto the crowns as shown.
5. Iron the lining fabric to the back of the crown. Firmly iron all of the fabrics in place on both sides of the crown. Carefully trim away excess lining fabric even with all edges of the interfacing.
6. Using a wide machine satin stitch topstitch over all raw edges of the fabric on the surface of the crown as shown. Use matching thread. Finish the outer edge of the crown with a satin stitch working over the raw edges to finish. Refer to photo.
7. For the ties - fold one 2 1/2" x 22" piece of fabric in half lengthwise with right sides together. Stitch down one side and across the end. Clip the corner and turn to the right side. Press. Turn under the raw edge end 1/4" and topstitch in place on one side of the crown. Repeat for the other side. Tie corner in place to create the necessary size.

<b>Star Fabric</b>	<b>Yardage</b>	<b>Cutting</b>
CX3584 Girl Clown Stripe	Fat 1/8 of each pattern	Top of Crown
CX5911 Sunshine Cora		Star
CX5916 Watermelon Polygon		Strips
CX5518 Blossom Kiss Dot		Oval
CX5518 Orange Kiss Dot		Strip

<b>Sun Fabric</b>	<b>Yardage</b>	<b>Cutting</b>
CX5518 Yellow Kiss Dot	Fat 1/8 of each pattern	Large Triangle
CX3584 Mint Clown Stripe		Strip
CX5911 Orange Cora		Small Triangle
CX5916 Sorbet Polygon		Strip

<b>Heart Fabric</b>	<b>Yardage</b>	<b>Cutting</b>
CX2504 Violet Zillion Hearts	Fat 1/8 of each pattern	Strip
CX5518 Blossom Kiss Dot		Heart
CX5912 Orchid Jemma		Top of the Crown
CX5911 Aqua Cora		Strip

<b>Flower Fabric</b>	<b>Yardage</b>	<b>Cutting</b>
CX5912 Lime Jemma	Fat 1/8 of each pattern	Flowers
CX5911 Green Cora		Circle and Flower centers
CX3584 Luna Crown Stripe		Strips in each color
CX5916 Lagoon Polygon		
CX5518 Aqua Kiss Dot		



## "Princess Tea Party - Princess Crown Chairs Covers"

Size: Approximately 14" W x 12"-14" H Skill Level : Confident Beginner

\* Designed for a children's size set. Adjust pattern accordingly for a different sized chair.

**Materials: Fabrics** - Fabrics for each crown design (see list for crowns), fusible web, threads to match, low loft needle punched batting. **OPTIONAL:** temporary fabric adhesive spray, scissors, straight pins, rotary cutter, acrylic ruler, and mat.

**Cutting:** (Both sides of one cover) (2) 7 1/2" H x 8 1/2" W, (4) 1 1/2" x 7 1/2", (4) 2 1/2" x 7", (2) 1 1/2" x 14 1/2" plus details for each specific crown cover batting cut to size. Each chair cover has an identical back and front. Lining (2) 8 1/2" H x 14 1/2" W pieces.



## Directions:

1. Sew one 1 1/2" x 7 1/2" strip to each side of (1) 7 1/2" H x 8 1/2" rectangle. Sew one 2 1/2" x 7 1/2" strips to each side of the center rectangular unit. Sew one 1 1/2" x 14 1/2" strip to the bottom of the pieced unit. Make (2)
2. Refer to the pattern for each specific crown chair cover. Cut the number of 14 1/2" wide strips for the top edge of the chair cover. Remember to add 1/4" seam allowance to each side for piecing.
3. Finish the top of the cover by sewing on the decorative crown edge.

Following the manufacturer's directions, trace the applique patterns onto the paper side of the fusible web. Rough cut out. Iron onto the wrong side of the designated fabrics. Cut out on the pattern lines. Remove the paper backing and iron into place as shown on the pattern or refer to the photo for placement.

4. Place pieced cover right side up on the low loft batting (using temporary fabric adhesive spray, following manufacturer's directions makes this easy). Machine satin stitch all raw edges of the the appliques to finish.. Stitch through the batting.
5. Machine quilt each side of the chair cover as desired. Stay stitch 1/8" from the raw edge around all sides. Trim away excess batting even with the fabric. Set aside.
6. Place lining pieces right sides together. Sew on both sides and the top. Clip corners. Set aside.
7. Stitch 1/4" seam on both sides of the top with right sides together align the front and back of the chair cover. Sew a 1/4" seam on each side to the fabric on the bottom of the crown motif. Backstitch to secure. Turn to the right side. Press flat.
8. Trim 1/4" off of each side along the side edges of the crown motif. The edge will be even with sewn seam.
9. With right sides together , sew lining around the lower edge of the chair cover. Turn the crown to the right side and the lining to the inside. Carefully topstitch the lower of the seat cover 1/8" from the seam.
10. Align the edges of the front and back of the chair cover at the top of the crown. Stay stitch the two layers together. Trim away any excess. With a wide, tight satin stitch, machine stitch over all of the raw edges on the sides and top of the cover as shown. For a cleaner finish, repeat the stitching a second time.
11. Topstitch across the the top of the chair cover 8" from the bottom to stabilize the crown edge. Place on top of of a chair back to use.
12. Refer to the list of fabrics used for the Princess Crown for the chair covers. Add extra fabric for the chair cover linings or use leftover fabric from another princess fabric.