

# Around the World

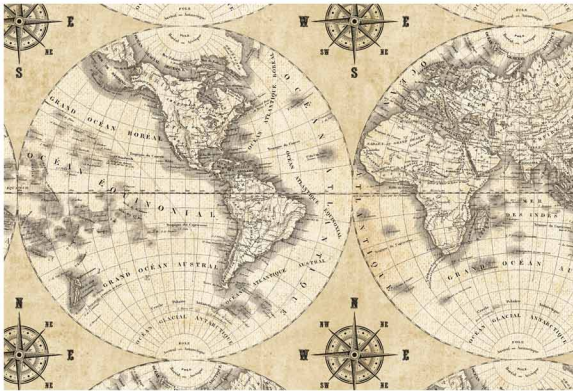
Interpreted from a design by Karen Witt  
Featuring the World Maps Collection by Sue Schlabach  
Size: 54" x 46"



Check [www.windhamfabrics.com](http://www.windhamfabrics.com) Free Project section to see if there are any pattern updates before you start your quilt project

# Around the World

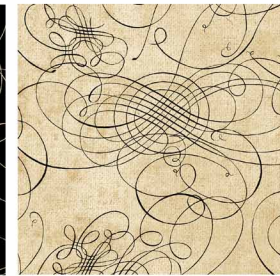
Page 2



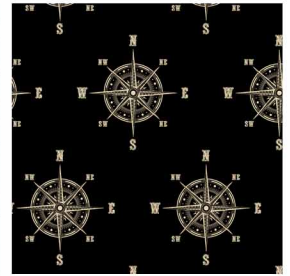
40026-X



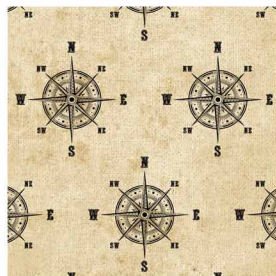
40027-1



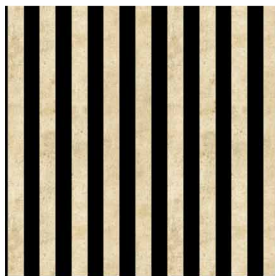
40027-2



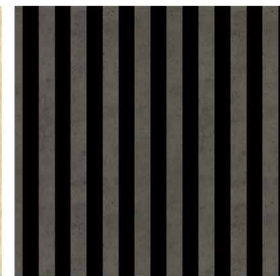
40028-1



40028-2



40029-1



40029-3



37098-8

## Fabric Requirements:

- 40026-X Multi World Maps - 1/2 yard for center block
- 40027-1 Black Scroll - 1 3/4 yards for first border, outside border and binding
- 40029-1 Black Stripe - 1/2 yard for first border
- 40028-1 Black Compasses - 1/8 yard (or fat eighth) for second border corner blocks
- 40028-2 Parchment Compasses - 5/8 yard for third border
- 40029-3 Grey Stripe - 3/4 yard for third border
- 40027-2 Parchment Scroll - 1/2 yard for second and fourth borders
- 37098-8 Taupe Solid (from Palette) - 1/8 yard (or fat eighth) for second border corner blocks

Backing = 2 7/8 yards

## Cutting Instructions:

40026-X Multi World Maps - center panel

Fussy cut 22 1/2" x 14 1/2" section centering over the world globes.

40027-1 Black Scroll - first border

Cut (2) 4 5/8" strip across the width of the fabric (WOF)

Sub cut (1) strip into (2) 4 1/2" x 24 3/4" - one each for the top and bottom border.

Sub cut (1) strip into (2) 4 5/8" x 15 7/8" - one for each side border

# Around the World

Page 3

## 40029-1 Black Stripe - first border

Cut (6) strips 4 3/4" along lengthwise grain of fabric

Sub cut (4) 4 3/4" x 12 3/4" rectangles and (4) 4 3/4" x 8 1/4" rectangles.

## 40028-1 Black Compasses - second border corner blocks

Create a square clear template 3 3/8" x 3 3/8" square. Turn as a diamond and fussy cut over (4) compasses, centering them, then mark and cut.

## 40028-2 Parchment Compasses - for third border

Taking same clear template, fussy cut (28) compasses.

## 37098-8 Taupe Solid for first border corners

Cut (8) 3" squares. Cut each square diagonally to make (16) triangles.

## 40027-2 Parchment - for second and fourth borders

Cut (2) 1 1/2" x 22 1/2" strips across WOF for sides of second border.

Cut (2) 1 1/2" x 34 1/2" strips across WOF for top and bottom of second border.

Cut (2) 2 1/2" x 32 1/2" strips across WOF for sides of fourth border.

Cut (2) 2 1/2" x WOF then join with scraps from the fourth border sides to make (2) 2 1/2" x 44 1/2" for top and bottom of fourth border.

## 40029-3 Grey Stripe - for third border

Cut (64) 3" squares. Cut each square once diagonally to make (128) triangles.

## 40027-1 Black Scroll - for fourth border and binding

**IMPORTANT:** Recommended that quilt be measured after the third border is added and before fourth borders are cut. They should measure 36 1/2" x 44 1/2". If your measurements, differ, please make adjustments.

Cut (2) 5 1/2" x 36 1/2" strips across WOF for side borders.

Cut (3) 5 1/2" x WOF strips. Join pieces together to create (2) 5 1/2" x 54 1/2" strips for top and bottom borders.

Cut (5) 2 1/4" x WOF strips for binding to make about 210" of binding.

# Around the World

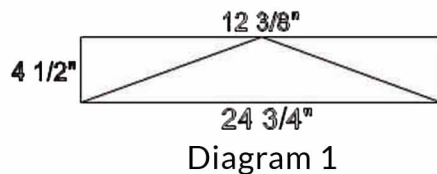
Page 4

## Instructions:

### FIRST BORDER

#### 1. For top and bottom borders

Fold each large rectangle of 40027-1 Black in half and mark center at the top of each strip. Use a pencil and ruler to draw a straight line, on wrong side of fabric., from each bottom corner to the center, referring to Diagram 1.



Unit 1  
Wrong side of strip on top of scroll and sew from center top to outside corner

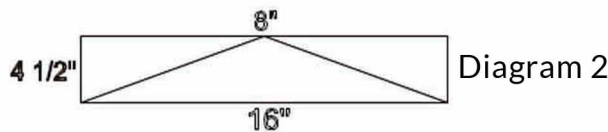
A. Referring to Unit 1, sew (1) large rectangle of stripe to each side of large rectangle of scroll, along marked pencil line.

B. press and trim excess. Repeat for the other side.

C. Trim. Unit should measure 4 1/2" x 22 1/2".

#### 2. For side borders

Repeat with small rectangles, mark center at 8" and referring to Diagram 2.



#### 3. Corners

Referring to Diagram 3 at right

A. Select (1) 3 3/8" x 3 3/8" diamond that has a fussy cut black compass.

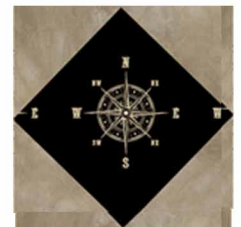
B. Sew (1) triangle from taupe solid to one side of the diamond. Press.

C. Repeat for the other three sides.

D. Trim to 1 1/2" x 4 1/2" square.

E. Repeat to make (3) more corner blocks.

Diagram 3



4. Assemble first border, referring to the quilt picture. Quilt should measure 22 1/2" x 30 1/2".

### SECOND BORDER

1. Sew side borders in place. Press.

2. Sew top and bottom borders in place. Press.

3. Quilt should measure 24 1/2" x 32 1/2".

### THIRD BORDER

Refer to Diagram 3

# Around the World

Page 5

1. Select (1) 3 3/8" x 3 3/8" parchment colored compass and sew one 40029-3 Grey stripe triangle to one side of th diamond. Press.
2. Repeat for the other (3) sides.
3. Trim to 4 1/2" x 4 1/2" square.
4. Repeat to make (28) square in square blocks.
5. Arrange and sew together in (2) vertical rows of (6) blocks each.  
Sew to sides of quilt.
6. Arrange and sew together in (2) horizontal rows of (10) blocks each.
7. Sew one strip to the top of the quilt and the other to the bottom of the quilt.



## FOURTH BORDER

1. Sew side borders 2 1/2" x 32 1/2" in place. Press.
2. Sew top and bottom borders (each 2 1/2" x 44 1/2") in place. Press.
3. Quilt should measure 36 1/2" x 44 1/2".

## FIFTH BORDER

1. Sew side borders each 5 1/2" x 36 1/2" in place. Press.
2. Sew top and bottom borders each 5 1/2" x 54 1/2" in place. Press.
3. Quilt should measure 46 1/2" x 54 1/2".

## FINISHING

Layer, quilt and bind as desired. ENJOY!

Be sure to visit [www.windhamfabrics.com](http://www.windhamfabrics.com) to see the complete collection  
and to download other Free Projects