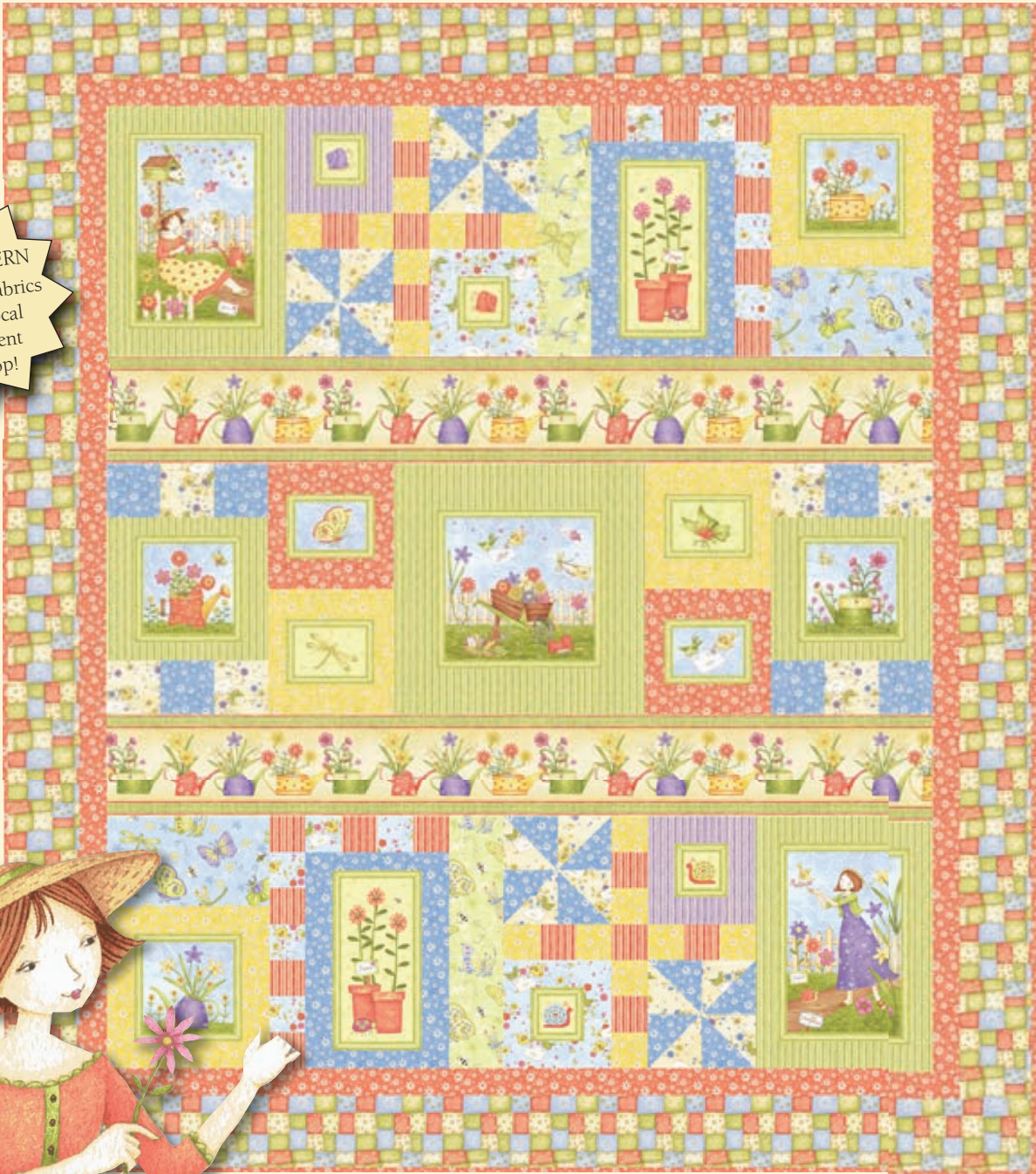


GARDEN GIFTS



FREE PATTERN
Ask for our fabrics
in your local
independent
quilt shop!



Peek Into My Garden quilt by Heidi Pridemore

Size: 57" x 65"



pbtex.com

PEEK INTO MY GARDEN

Quilt by Heidi Pridemore using the *Garden Gifts* fabric collection
by Gil-Jin Foster for P&B Textiles

Size: 57" x 65"

YARDAGE

GGIF 620 E	Panel	1 panel
GGIF 621 B	Blue Butterflies	1/4 yard
GGIF 621 G	Green Butterflies	1/4 yard
GGIF 622 B	Orange Patchwork	1 7/8 yards
GGIF 623 RO	Large Stripe	1 1/2 yards
GGIF 624 B	Blue Daisies	1/2 yard
GGIF 624 RO	Orange Daisies	1 1/8 yards
GGIF 624 Y	Yellow Daisies	1/2 yard
GGIF 625 B	Blue Envelopes	1/3 yard
GGIF 625 E	Cream Envelopes	1/3 yard
GGIF 626 C	Purple Stripe	1/4 yard
GGIF 626 G	Green Stripe	3/4 yard
GGIF 626 RO	Orange Stripe	1/4 yard
BACKING	Any GGIF fabric	4 yards

CUTTING

Cut strips across the width of fabric (wof), unless otherwise indicated.

Large Stripe (GGIF 623 RO), fussy cut:

- (2) 6 1/2" x 46 1/2" lengthwise strips

Orange Patchwork (GGIF 622 B), cut:

- (4) 4 1/2" x 57 1/2" outer-border lengthwise strips

Panel (GGIF 620 E), fussy cut:

Make sure to cut all panel motifs 1/4" outside the printed frame line.

- (1) 9 1/2" square
- (4) 6 1/2" squares
- (4) 3 1/2" squares
- (2) 8" x 12" rectangles
- (2) 5 1/2" x 10 1/2" rectangles
- (4) 4" x 5 1/2" rectangles

Blue Envelopes (GGIF 625 B), cut:

- (1) 7 1/2" x 42" strip; cut the strip into:
 - (4) 2" x 6 1/2" strips
 - (4) 2" x 3 1/2" strips
 - (10) 2 1/2" squares

Cream Envelopes (GGIF 625 E), cut:

- (1) 3 7/8" x 42" strip; cut the strip into (8) 3 7/8" squares
- (1) 3 1/2" x 42" strip; cut the strip into (6) 3 1/2" squares

Blue Butterflies (GGIF 621 B), cut:

- (1) 5 1/2" x 42" strip; cut the strip into (2) 5 1/2" x 9 1/2" strips

Green Butterflies (GGIF 621 G), cut:

- (1) 3 1/2" x 42" strip; cut the strip into (2) 3 1/2" x 14 1/2" strips

Blue Daisies (GGIF 624 B), cut:

- (1) 3 7/8" x 42" strip; cut the strip into (8) 3 7/8" squares
- (1) 3 1/2" x 42" strip; cut the strip into (6) 3 1/2" squares
- (2) 2 1/2" x 42" strips; cut the strips into (4) 2 1/2" x 10 1/2" strips and (4) 2 1/2" x 9 1/2" strips

Orange Daisies (GGIF 624 RO), cut:

- (1) 2" x 42" strip; cut the strip into (4) 2" x 4" strips
- (1) 3" x 42" strip; cut the strip into (4) 3" x 8 1/2" strips
- (6) 2" x 42" inner-border strips
- (7) 2 1/2" x 42" binding strips

Yellow Daisies (GGIF 624 Y), cut:

- (1) 9 1/2" x 42" strips; cut the strip into:
 - (4) 2" x 9 1/2" strips
 - (4) 3" x 8 1/2" strips
 - (4) 2" x 6 1/2" strips
 - (4) 2" x 4" strips
- (1) 2 1/2" x 42" strip; cut the strip into (16) 2 1/2" squares

Purple Stripe (GGIF 626 C), cut:*

- (1) 3 1/2" x 42" strip; cut the strip into (4) 2" x 3 1/2" strips
- (1) 2" x 42" strip; cut the strip into (4) 2" x 6 1/2" strips

Green Stripe (GGIF 626 G), cut:*

- (1) 12" x 42" strip; cut the strip into:
 - (4) 2 1/2" x 12" strips
 - (2) 4" x 9 1/2" strips
 - (4) 2" x 6 1/2" strips
- (2) 2 1/2" x 42" strips; cut the strips into (4) 2 1/2" x 12" strips
- (1) 4" x 42" strip; cut the strips into (2) 4" x 16 1/2" strips
- (1) 2" x 42" strip; cut the strip into (4) 2" x 9 1/2" strips

Orange Stripe (GGIF 626 RO), cut:*

- (2) 2 1/2" x 42" strips; cut the strips into (22) 2 1/2" squares

**Directional fabrics; refer to photo as needed for stripe orientation.*

PANEL BLOCK ASSEMBLY

Refer to the quilt photo for fabric placement guidance and stripe orientation while assembling the blocks.

1. Sew 4" x 9 1/2" green stripe strips to opposite sides of the 9 1/2" panel square. Sew 4" x 16 1/2" green stripe strips to the top and bottom edges of the panel square to complete the center block. Trim to measure 14 1/2" x 14 1/2" with the panel centered in the middle of the border.

2. Sew 2" x 6 1/2" yellow daisy strips to opposite sides of a 6 1/2" panel square. Sew 2" x 9 1/2" yellow daisy strips to the top and bottom edges to complete a medium-square block. The square should measure 9 1/2" x 9 1/2" with the panel centered in the border. Repeat to make a second medium-square block with a yellow border.

3. Repeat step 2, using green stripe strips and the two remaining $6\frac{1}{2}$ " panel squares. Trim these two medium-square blocks to each measure $9\frac{1}{2}$ " (wide) x $8\frac{1}{2}$ ".

4. Sew 2 " x $3\frac{1}{2}$ " purple stripe strips to opposite sides of a $3\frac{1}{2}$ " panel square. Sew 2 " x $6\frac{1}{2}$ " purple stripe strips to the top and bottom edges to complete the small-square block. The block should measure $6\frac{1}{2}$ " square with the panel centered in the middle of the border. Repeat to make a second small-square block with a purple stripe border.

5. Repeat step 4, using blue envelopes strips and the two remaining $3\frac{1}{2}$ " panel squares to make two small-square blocks.

6. Sew $2\frac{1}{2}$ " x 12 " green stripe strips to opposite sides of an 8 " x 12 " panel rectangle. Sew $2\frac{1}{2}$ " x 12 " green stripe strips to the top and bottom edges of the panel rectangle to complete a large-rectangle block. Trim the block to measure $10\frac{1}{2}$ " x $14\frac{1}{2}$ " with the panel centered in the middle of the border. Repeat to make a second large-rectangle block with a green stripe border.

7. Sew $2\frac{1}{2}$ " x $10\frac{1}{2}$ " blue daisy strips to opposite sides of a $5\frac{1}{2}$ " x $10\frac{1}{2}$ " panel rectangle. Sew $2\frac{1}{2}$ " x $9\frac{1}{2}$ " blue daisy strips to the top and bottom edges of the panel rectangle to complete a medium-rectangle block. Trim the block to measure $8\frac{1}{2}$ " x $12\frac{1}{2}$ " with the panel centered in the middle of the border. Repeat to make a second medium-rectangle block with a blue daisy border.

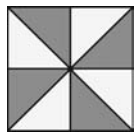
8. Sew 2 " x 4 " orange daisy strips to opposite sides of a 4 " x $5\frac{1}{2}$ " panel rectangle. Sew 3 " x $8\frac{1}{2}$ " orange daisy strips to the top and bottom edges of the panel rectangle to complete a small-rectangle block. Trim the block to measure $7\frac{1}{2}$ " square with the panel centered in the middle of the border. Repeat to make a second small-rectangle block with an orange daisy border.

9. Repeat step 8, using yellow daisy strips and the two remaining 4 " x $5\frac{1}{2}$ " panel rectangles to make two small-rectangle blocks.

PIECED BLOCK ASSEMBLY

10. Layer a $3\frac{7}{8}$ " cream envelopes square right sides together with a $3\frac{7}{8}$ " blue daisy square. Draw a diagonal line across the top square. Sew $\frac{1}{4}$ " from each side of the drawn line. Cut the squares apart on the drawn line to make two $3\frac{1}{2}$ " half-square-triangle units. Repeat to make 16 half-square-triangle units total.

11. Join four half-square-triangle units to make a pinwheel block. The block should measure $6\frac{1}{2}$ " square. Repeat to make four pinwheel blocks total.



12. Referring to the photo and quilt layout diagram, sew together one purple stripe small-square block, one blue envelopes small-square, two pinwheel blocks, eight yellow daisy squares, and five orange stripe squares to make one $14\frac{1}{2}$ " block for the top row.

13. Repeat step 12 to make a second $14\frac{1}{2}$ " block for the bottom row, making sure to reverse the orientation of the pieces as shown in the quilt layout diagram.

14. Referring to the photo and quilt layout diagram, sew together one medium-rectangle block, five blue envelopes squares, and six

orange stripe squares to make one $10\frac{1}{2}$ " x $14\frac{1}{2}$ " block for the top row.

15. Repeat step 14 to make a second $10\frac{1}{2}$ " x $14\frac{1}{2}$ " block for the bottom row, making sure to reverse the orientation of the pieces as shown in the quilt layout diagram.

16. Referring to the photo and quilt layout diagram, sew together one trimmed medium-square block, three $3\frac{1}{2}$ " cream envelopes squares, and three $3\frac{1}{2}$ " blue daisies squares to make the left block in the middle row.

17. Repeat step 16 to make the right block in the middle row.

18. Sew a blue butterflies strip to the bottom of a medium-square block for the top row. Then sew a blue butterflies strip to the top of a medium-square block for the bottom row.

QUILT TOP ASSEMBLY

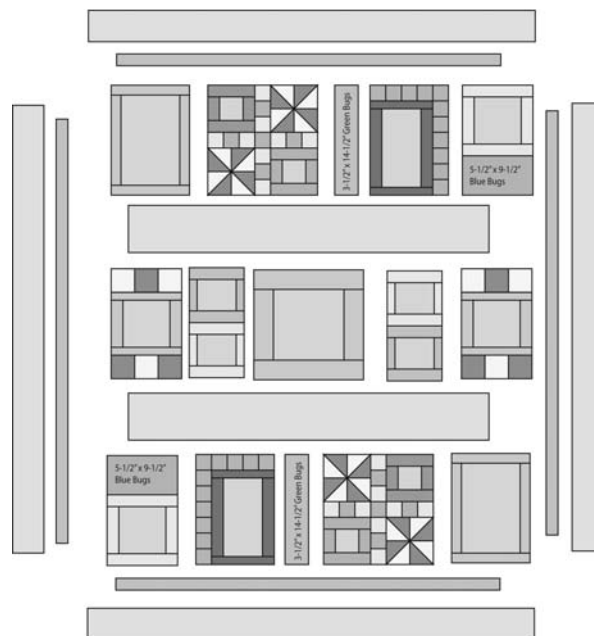
19. Referring to the photo and quilt layout diagram for placement guidance, join the assorted blocks and green butterfly strips to make the top and bottom rows. Then join the blocks to make the middle row. Each row should measure $14\frac{1}{2}$ " x $46\frac{1}{2}$ ".

20. Join the three rows and two main stripe strips, alternating them as shown in the photo to complete the $46\frac{1}{2}$ " x $54\frac{1}{2}$ " quilt top.

21. Join the 2 "-wide orange daisy strips end to end to make a long strip. From the strip, cut two $54\frac{1}{2}$ "-long strips and sew them to opposite sides of the quilt top. From the remaining strip, cut two $49\frac{1}{2}$ "-long strips and sew them to the top and bottom of the quilt top to complete the inner border.

22. Sew the orange patchwork strips to the sides, top, and bottom of the quilt top to complete the outer border.

23. Layer the quilt top with batting and backing; baste. Quilt as desired. Using the $2\frac{1}{2}$ "-wide orange daisy strips, bind the edges to finish.



Layout Diagram

GARDEN GIFTS

Fabric Collection by **Gil-Jin Foster**



GGIF 620 E • selvage to selvage • 24" repeat



GGIF 623 B



GGIF 622 B



GGIF 622 C



GGIF 623 RO



GGIF 625 B



GGIF 625 E



GGIF 621 B



GGIF 621 E



GGIF 621 G



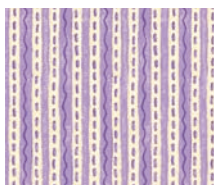
GGIF 624 B



GGIF 624 RO



GGIF 624 Y



GGIF 626 C



GGIF 626 G



GGIF 626 RO

P&B Textiles ♦ 1580 Gilbreth Road, Burlingame, CA 94010 ♦ 800-852-2327

For wholesale orders: 14683 Midway Road, Addison, TX 75001 ♦ 800-351-9087 ♦ www.pbtex.com



100% cotton ♦ Cold wash & dry ♦ 43"/44" ♦ Colors may vary due to printing process ♦ 2/12
Panel shown selvage to selvage. 623 shown at 13%. All other fabrics shown at 50% scale.